

**Raw Land**  
**For Lease**

# Brookhollow

**Industrial Blvd SE**  
Dalton, GA 30721

**± 34 AC**



**Scott Hardeman**  
shardeman@cresa.com  
352.359.7494



**Gareth Tremege**  
jtremege@cresa.com  
678.446.2882



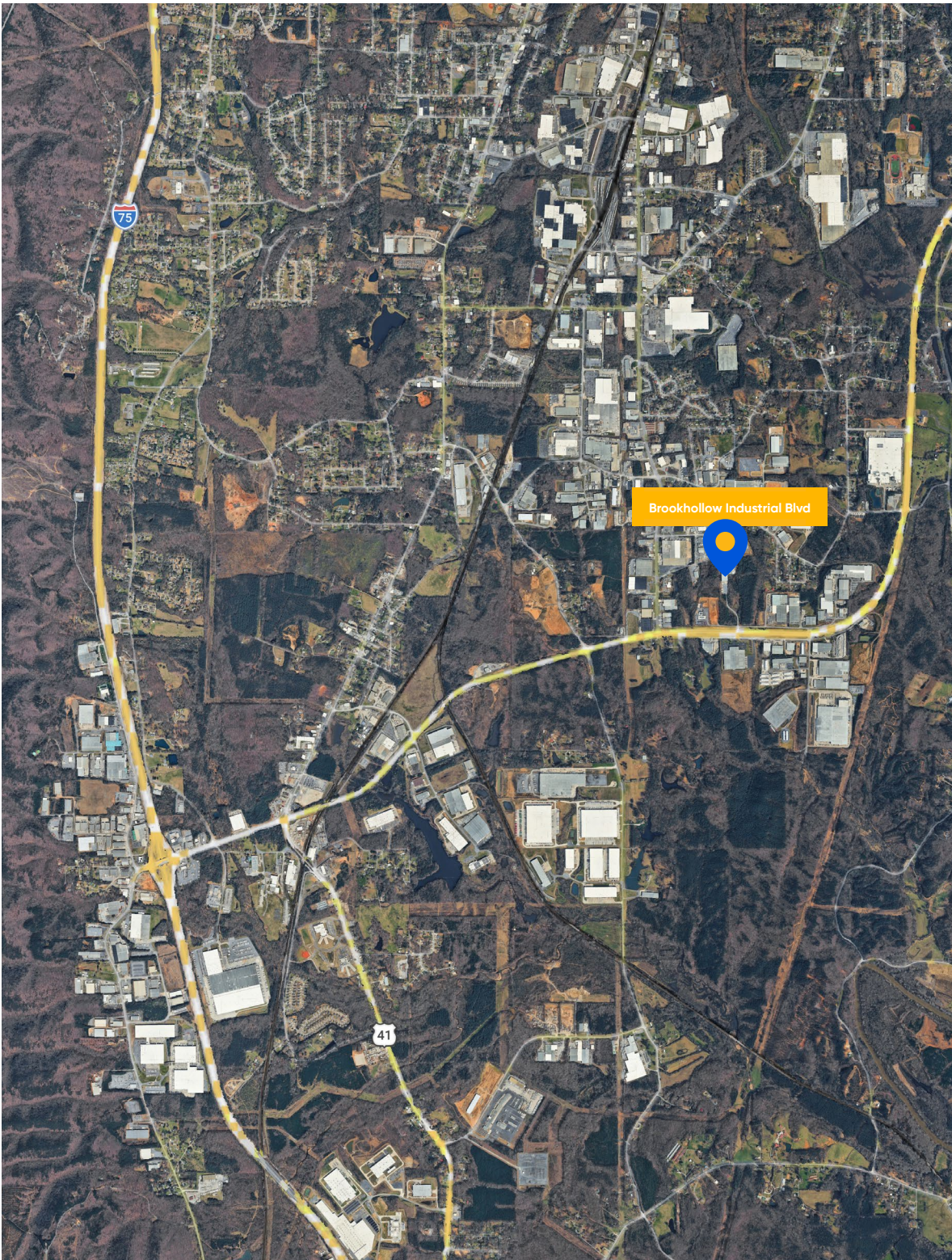
# Property Highlights

■ ± 34 AC

■ Zoning: M2

■ Raw Land

■ Parcel ID: 13-025-01-017 , 13-025-01-002 , 13-025-01-008

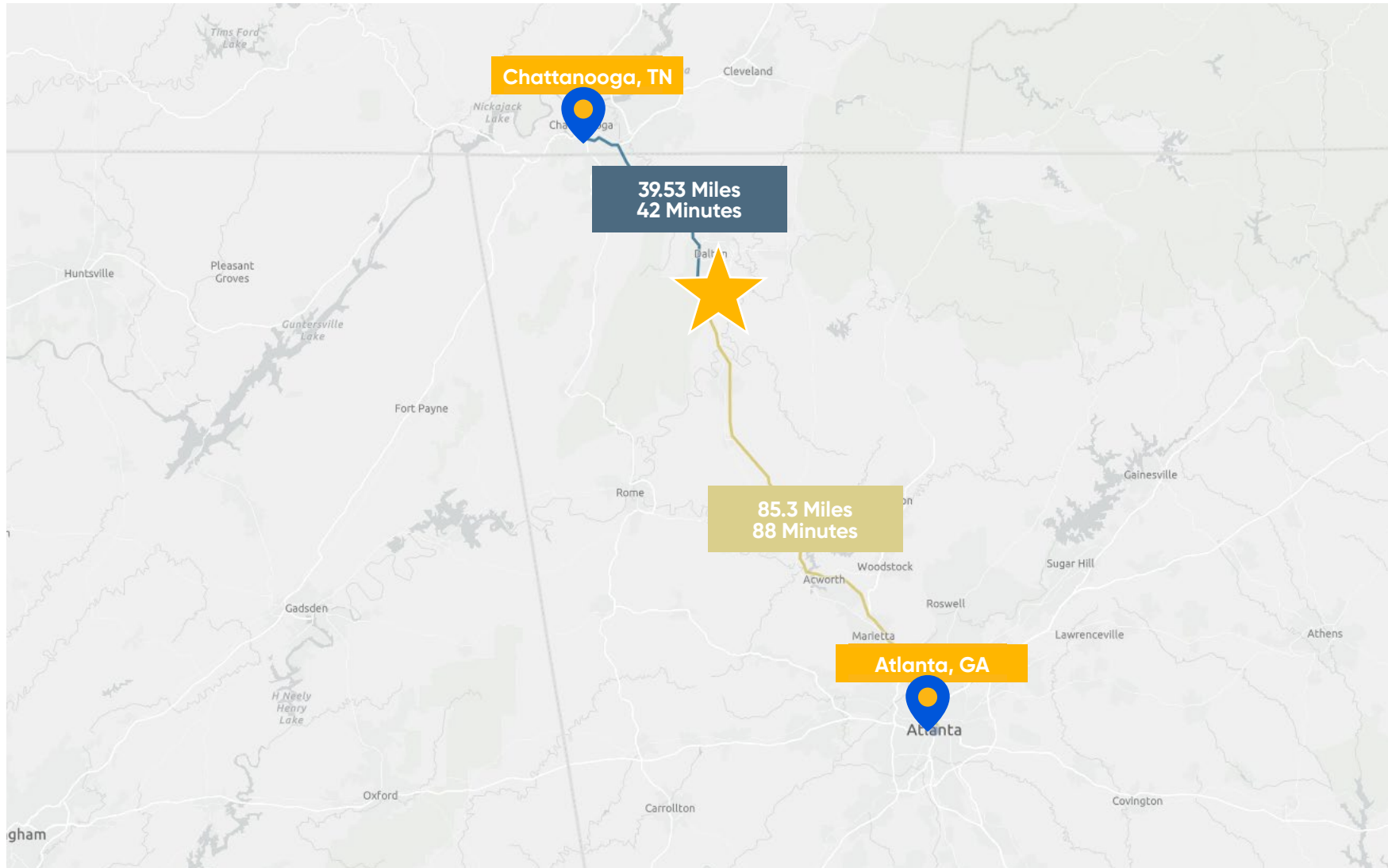


**Brookhollow Industrial Blvd** is strategically positioned in Dalton, a well-established industrial hub in Northwest Georgia known for its strong manufacturing base and skilled workforce. The property benefits from immediate access to key transportation corridors, including proximity to Interstate 75, providing efficient connectivity to major markets such as Atlanta, Chattanooga, and throughout the Southeast.

Located within a mature industrial corridor, 310 Brookhollow offers convenient access to regional suppliers, distribution networks, and a deep labor pool. The surrounding area is home to a concentration of manufacturing and logistics users, reinforcing Dalton's position as a key center for production and distribution. This location supports streamlined operations and reliable access to both regional and national supply chains, making it well-suited for a range of industrial users.



# Drive Times + Distances



Site: Brookhollow Industrial Blvd

# For More Information

# Brookhollow

Industrial Blvd SE  
Dalton, GA 30721

± 34 AC



Scott Hardeman  
shardeman@cresa.com  
352.359.7494



Gareth Tremege  
jtremege@cresa.com  
678.446.2882

Cresa © 2026. All rights reserved. The information contained in this document has been obtained from sources believed reliable. While Cresa does not doubt its accuracy, Cresa has not verified it and makes no guarantee, warranty, or representation about it. It is your responsibility to independently confirm its accuracy and completeness. Any projections, opinions, assumptions or estimates used are for example only and do not represent the current or future performance of the property. The value of this transaction to you depends on tax and other factors which should be evaluated by your tax, financial and legal advisors. You and your advisors should conduct a careful, independent investigation of the property to determine to your satisfaction the suitability of the property for your needs.

cresa