

FOR LEASE 1010-1060 CALLE CORDILLERA

SEAVIEW BUSINESS PARK | SAN CLEMENTE



FEATURES

- Professionally managed business park
- Quiet setting
- Minutes from the 5 freeway
- Parking 3:1,000
- Restroom in each suite
- Close to retail/food amenities
- Good truck/delivery access
- Coffee bar with sink in each unit
- 100 amp / 3 phase power (verify)
- Functional office/warehouse layouts
- 10x10 rollup doors
- 14' warehouse ceiling clearance



GUY LAFERRARA **BROCK STRYKER** **TRAVIS BARNETT**
SV President | BRE# 01012355 *SV President* | BRE# 01928271 *Associate* | BRE# 02069500
949.790.3115 **949.790.3131** **949.790.3145**
glaferrara@leeirvine.com bstryker@leeirvine.com tbarnett@leeirvine.com

FOR LEASE

1010-1060 CALLE CORDILLERA

SEAVIEW BUSINESS PARK | SAN CLEMENTE

AVAILABILITY

1010 CALLE CORDILLERA

UNIT	RSF	LEASE RATE	COMMENTS
102	1,560	\$1.95/SF	Reception area, 4 private offices, breakroom, and warehouse with GL door.

1020 CALLE CORDILLERA

UNIT	RSF	LEASE RATE	COMMENTS
----- 100% LEASED			

1030 CALLE CORDILLERA

UNIT	RSF	LEASE RATE	COMMENTS
----- 100% LEASED			

1040 CALLE CORDILLERA

UNIT	RSF	LEASE RATE	COMMENTS
----- 100% LEASED			

1050 CALLE CORDILLERA

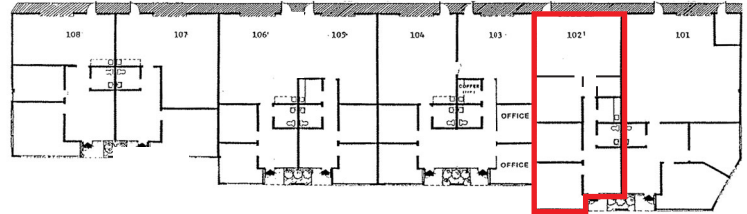
UNIT	RSF	LEASE RATE	COMMENTS
----- 100% LEASED			

1060 CALLE CORDILLERA

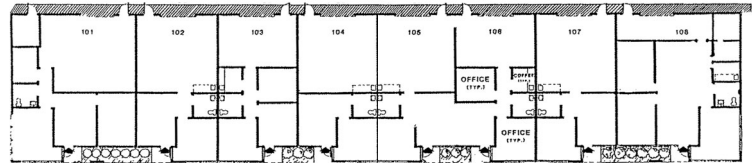
UNIT	RSF	LEASE RATE	COMMENTS
----- 100% LEASED			

COMMON AREA MAINTENANCE FEE OF \$0.12 PSF

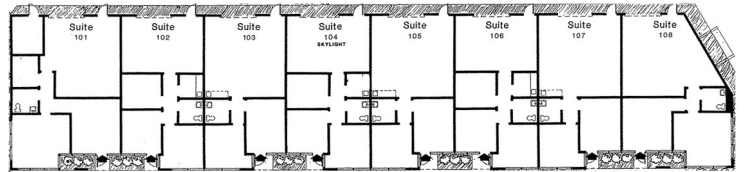
BUILDING 1010



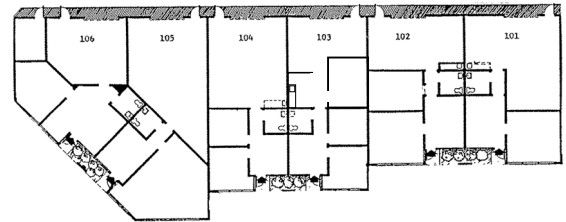
BUILDING 1020



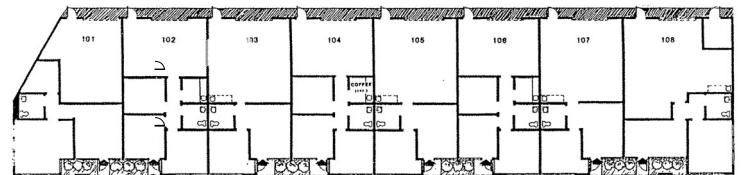
BUILDING 1030



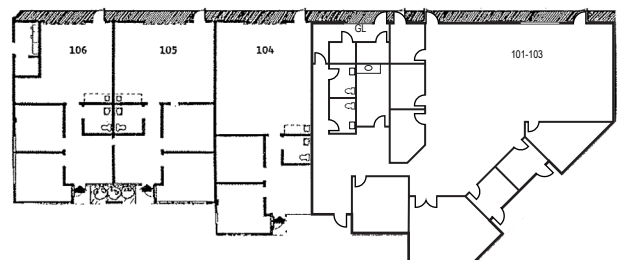
BUILDING 1040



BUILDING 1050



BUILDING 1060



FOR LEASE

1010-1060 CALLE CORDILLERA

SEAVIEW BUSINESS PARK | SAN CLEMENTE

1.5 MILES
TO 5
FREEWAY



6 MILES
TO ORTEGA
HIGHWAY



 **LEE &
ASSOCIATES**
COMMERCIAL REAL ESTATE SERVICES

GUY LAFERRARA SV President BRE# 01012355 949.790.3115 glaferrara@leeirvine.com	BROCK STRYKER SV President BRE# 01928271 949.790.3131 bstryker@leeirvine.com	TRAVIS BARNETT Associate BRE# 02069500 949.790.3145 tbarnett@leeirvine.com
--	--	--