



Unit 4a, New Road Industrial Estate, New Road,  
Hixon, Staffordshire, ST18 0PJ  
To Let: £21,500 per annum

Industrial Unit  
Gross Internal Area 339.73 sq. m (3,657 sq. ft)

**Hammond Chartered Surveyors**

Lymedale Business Centre | Hooters Hall Road | Newcastle-under-Lyme | Staffordshire | ST5 9QF

t: 01782 659 905

e: [info@hammondsurveyors.co.uk](mailto:info@hammondsurveyors.co.uk)

[www.hammondsurveyors.co.uk](http://www.hammondsurveyors.co.uk)

GMH Surveyors Limited. Registered in England & Wales No. 13894544. Regulated by RICS



**RICS**

the mark of  
property  
professionalism  
worldwide

Unit 4a, New Road Industrial Estate  
New Road  
Hixon, Staffordshire  
ST18 0PJ

#### Location

Hixon is approximately 5 miles from Stafford, 6 miles from Rugeley, 8 miles from Stone and 9 miles from J16 of the M6 motorway. The A51 connecting Stone and Rugeley runs to the west and the A518 connecting Stafford and Uttoxeter runs to the north.

- NGR: 52°49'59"N, 002°00'17"W
- what3words: texted.impulsive.clashing

#### Description

The property comprises an end-terrace industrial building of portal frame construction with 5.52m eaves and brick/block and insulated profiled steel sheet clad elevations and an insulated sheet clad roof with rooflights.

Measured internally, the main open plan workshop/warehouse accommodation is 11.92m wide x 24.00m deep with welfare to the rear comprising two toilets, kitchenette and a small mezzanine office above. To the front is an office/reception with further office to the first floor above. The building has an electric operated roller shutter door to the front elevation (5.00m wide x 4.90m height).

To the front of the building there is a shared concrete yard.

#### Accommodation

GIA	sq. m	sq. ft
Ground Floor	309.73	3,334
Mezzanine	30.00	323
Total	339.73	3,657

#### Services

Three-phase electricity, water and drainage are available.

#### Energy Performance

Energy Rating D

#### Planning

Uses within Use Class B2/B8 are understood to be acceptable. Interested parties are recommended to make their own enquiries of Stafford Borough Council.

#### Rateable Value

£11,750 (£20,500 from 1 April 2026)

#### Tenure

The property is available by way of a new Full Repairing and Insuring lease on terms to be agreed.

#### Rent

£21,500 per annum exclusive

#### Service Charge

A service charge will apply to cover the landlord's costs of maintaining common parts and the estate.

#### VAT

VAT is applicable to all amounts.

#### Costs

Each party is responsible for their own costs.

#### Anti-Money Laundering Regulations

The Anti Money Laundering regulations require identification checks to be undertaken for all parties purchasing/leasing property. Before a business relationship can be formed, we will request proof of identification for the purchasing/leasing entity.

#### Tenant Referencing

Prospective tenants will be subject to third-party referencing for which a non-refundable fee is payable.

#### Viewings

Viewing is strictly by appointment with the Sole Agent.

#### Glenn Hammond MRICS

T: 01782 659 905

M: 07957 994 057

E: glenn@hammondsurveyors.co.uk

#### Phil Webb

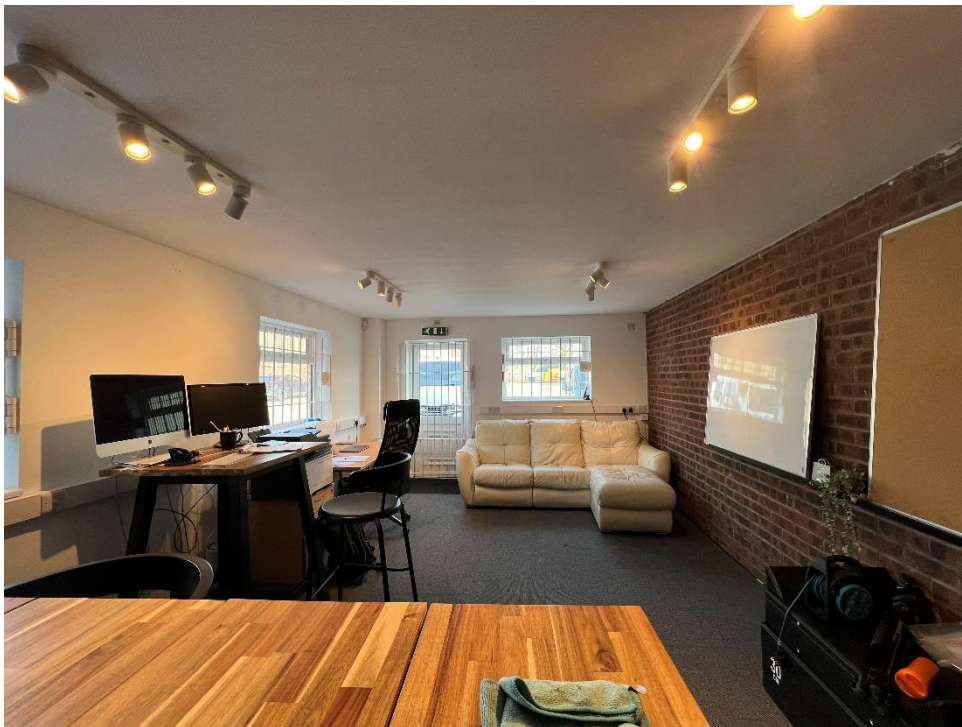
T: 01782 659 905

M: 07821 639094

E: phil@hammondsurveyors.co.uk

#### Subject to Contract

Disclaimer: Hammond Chartered Surveyors on its behalf, for any joint agent and for the Vendors or Lessors of this property whose Agents they are, give notice that: 1. These particulars are set out as a general outline only for guidance to intending Purchasers or Lessees and do not constitute any part of an offer or contract. 2. Details are given without any responsibility and any intending Purchasers, Lessees or Third Parties should not rely on them as statements or representations of fact but must satisfy themselves by inspection or otherwise as to the correctness of each of them. 3. No person in the employment of Hammond Chartered Surveyors has any authority to make any representation or warranty whatsoever in relation to this property. 4. Unless otherwise stated, all prices and rents are quoted exclusive of all outgoing and VAT. 5. Hammond Chartered Surveyors is the trading name of GMH Surveyors Limited.



**Hammond Chartered Surveyors**

Lymedale Business Centre | Hooters Hall Road | Newcastle-under-Lyme | Staffordshire | ST5 9QF

t: 01782 659 905

e: [info@hammondsurveyors.co.uk](mailto:info@hammondsurveyors.co.uk)

[www.hammondsurveyors.co.uk](http://www.hammondsurveyors.co.uk)

GMH Surveyors Limited. Registered in England & Wales No. 13894544. Regulated by RICS



**Hammond Chartered Surveyors**

Lymedale Business Centre | Hooters Hall Road | Newcastle-under-Lyme | Staffordshire | ST5 9QF

t: 01782 659 905

e: [info@hammondsurveyors.co.uk](mailto:info@hammondsurveyors.co.uk)

[www.hammondsurveyors.co.uk](http://www.hammondsurveyors.co.uk)

GMH Surveyors Limited. Registered in England & Wales No. 13894544. Regulated by RICS