

# FOR LEASE

397 RSF | \$1,300/MO. FSG

## NorthWest Crossing Office Suite

2754 NW Crossing Dr., Suite 206, Bend, OR 97703



### NORTHWEST CROSSING

Be a part of Bend's most unique pedestrian-friendly community where people live, shop, eat and do business. The neighborhood includes tenants such as Grove Market Hall, Washington Dining & Cocktails, Portello Wine Cafe, Sparrow Bakery, La Rosa, Mountain Burger, Poke Row and more.

### HIGHLIGHTS

- Suite 206 is a second floor office space with lots of natural light
- Across the street from La Rosa, Umpqua Bank, Voltaire Cycles and Bend Pizza Kitchen
- Building consists of retail suites on the first floor with small office suites on the second floor

Jay Lyons, SIOR, CCIM | Grant Schultz, SIOR, CCIM

600 SW Columbia St., Ste. 6100 | Bend, OR 97702

541.383.2444 | [www.CompassCommercial.com](http://www.CompassCommercial.com)

COMPASS  
COMMERCIAL

REAL  
ESTATE  
SERVICES

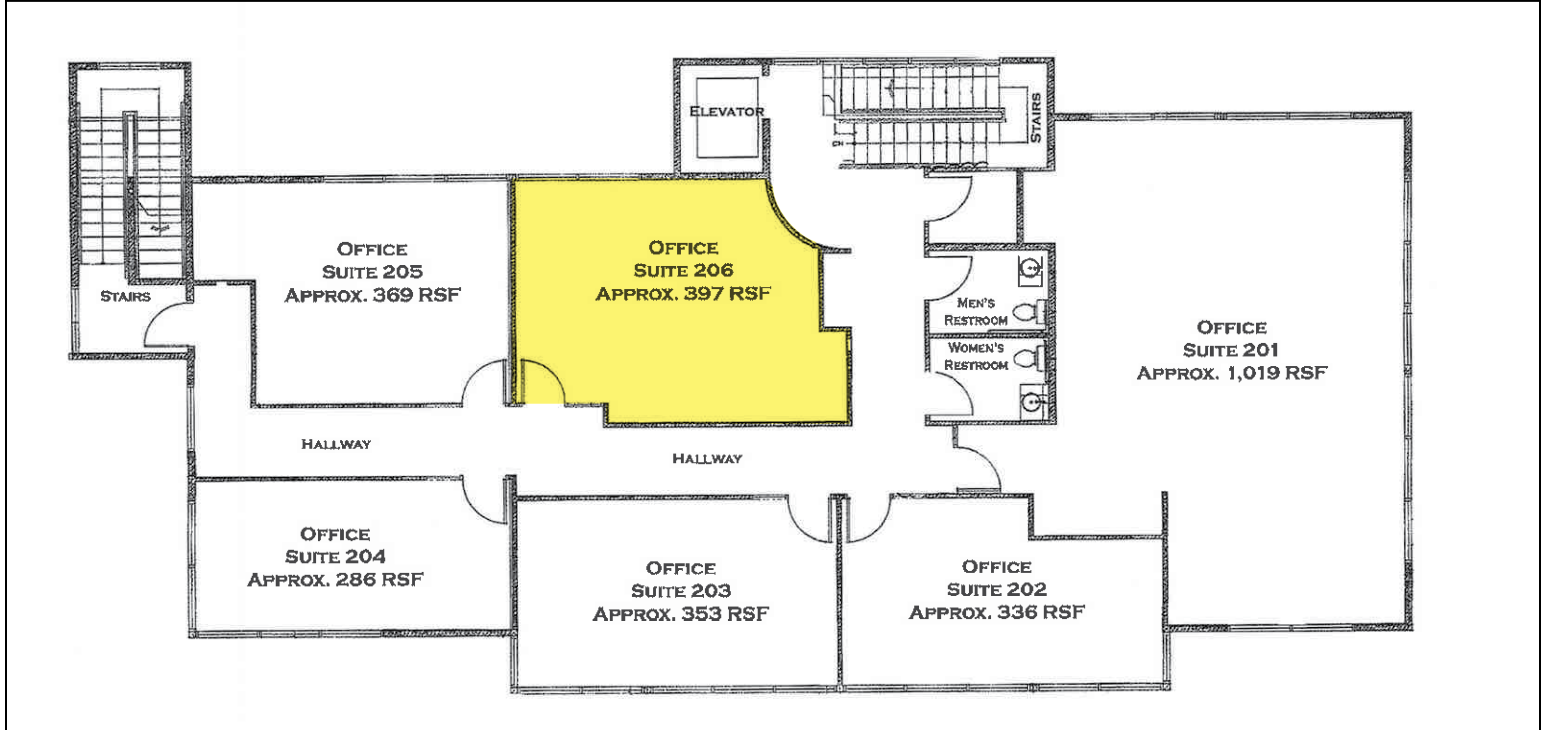
# FOR LEASE

397 RSF | \$1,300/MO. FSG

## NorthWest Crossing Office Suite

2754 NW Crossing Dr., Suite 206, Bend, OR 97703

### FLOOR PLAN



Brokers are licensed in the state of Oregon. This information has been furnished from sources we deem reliable, but for which we assume no liability. This is an exclusive listing. The information contained herein is given in confidence with the understanding that all negotiations pertaining to this property be handled through Compass Commercial Real Estate Services. All measurements are approximate.



**Jay Lyons, SIOR, CCIM**  
Partner, Principal Broker  
Cell 541.410.6519  
jlyons@compasscommercial.com



**Grant Schultz, SIOR, CCIM**  
Broker  
Cell 541.480.9873  
gschultz@compasscommercial.com

**COMPASS**  
COMMERCIAL

**REAL ESTATE**  
SERVICES