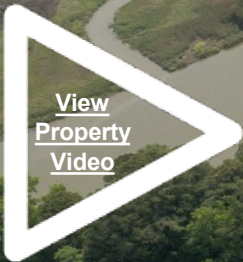


For Sale

117 Acre Residential Site, Suffolk, VA



*Achieve
Ambitions*

Property/Market Overview

The Area

Suffolk is a top 2 growth market for residential development in the Hampton Roads Region and is also one of the fastest appreciating home sale sites in the region both by median and average sales prices as measured by home site or residence

Location

Located between Pope Farm Lane and Waters End Farm Lane
Off Crittenden Road

Submarket

North Suffolk

Zoning

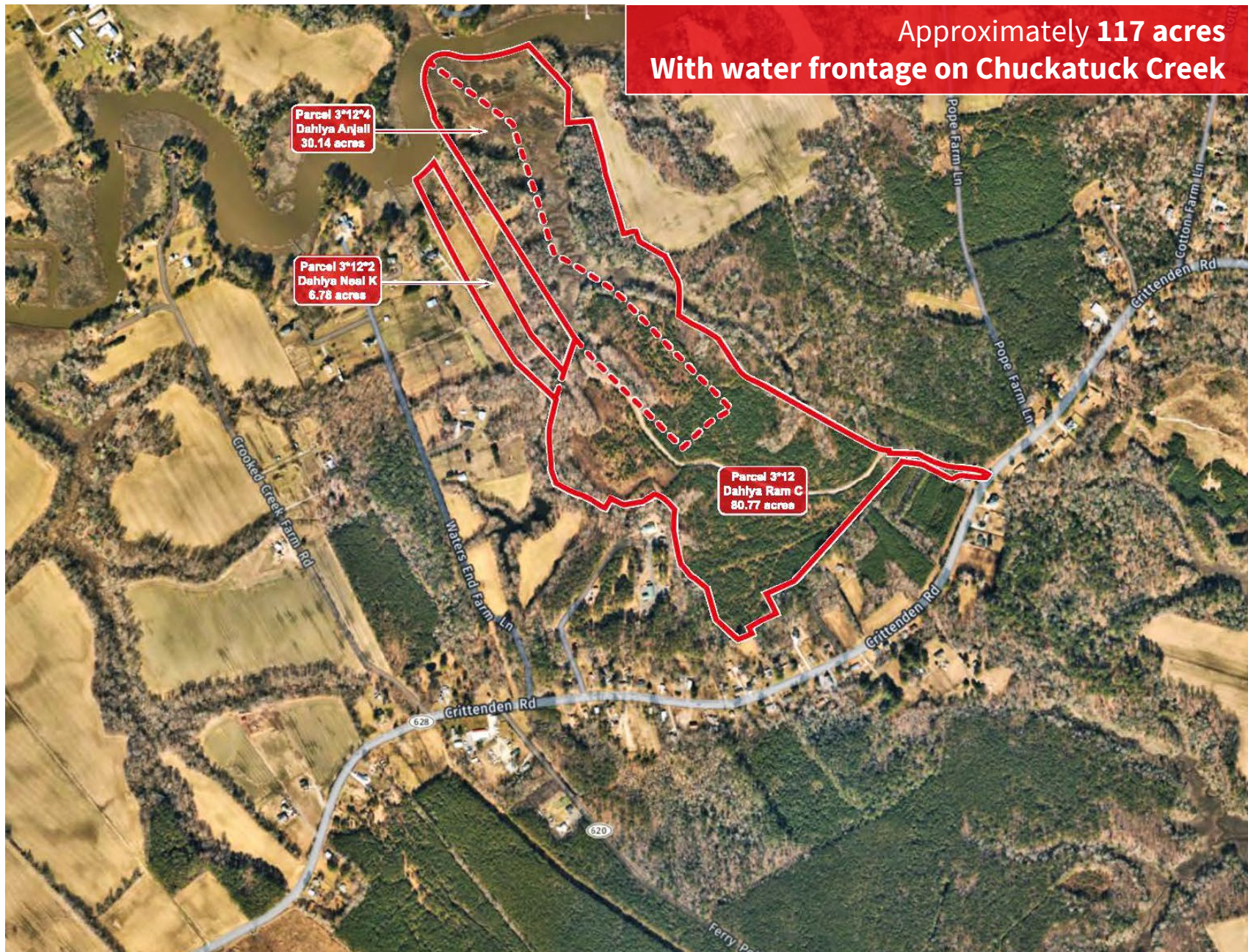
Agricultural

Size

117 +/- acres



SITE OVERVIEW



AERIAL MAP



North Suffolk Residential Site

Huntington Ingalls

Downtown Norfolk

Greenbrier

Driving Distances

Newport News (Huntington Ingalls)	17 miles
Proximity to Downtown Norfolk	21.3 miles
Access to I-264, I-664	9.8 miles
Proximity to Greenbrier	29.4 miles

Contact information

ADVISORS

Gregg Christoffersen

Managing Director

JLL

+1 757 348 1477

gregg.christoffersen@am.jll.com



999 Waterside Drive, Suite 850 | Norfolk, VA 23510

www.us.jll.com

Copyright © Jones Lang LaSalle IP, Inc. 2021

This publication is the sole property of Jones Lang LaSalle and must not be copied, reproduced or transmitted in any form or by any means, either in whole or in part, without the prior written consent of Jones Lang LaSalle. The information contained in this publication has been obtained from sources generally regarded to be reliable. However, no representation is made, or warranty given, in respect of the accuracy of this information. We would like to be informed of any inaccuracies so that we may correct them. Jones Lang LaSalle does not accept any liability in negligence or otherwise for any loss or damage suffered by any party resulting from reliance on this publication. Jones Lang LaSalle Americas, Inc., California license # 01223413. Jones Lang LaSalle Americas, Inc. License # 19262.

Any opinion or estimate of value of any asset in this presentation is based upon the high-level preliminary review by JLL. It is not the same as the opinion of value in an appraisal developed by a licensed appraiser under the Uniform Standards of Professional Appraisal Practice. JLL expressly disclaims any liability for any reliance on any opinion or estimate of value in this presentation by any party.