

# PLAZA SQUARE — NORTH —



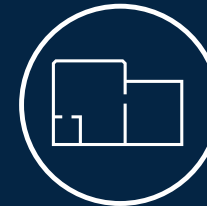
**NEWMARK**

4360 Chamblee Dunwoody Rd, Atlanta, GA 30341

PLAZA SQUARE NORTH  
**PROPERTY  
HIGHLIGHTS**



Immediate access  
to I-285



Ideal suite sizes  
ranging from  
519 -16,552 RSF



Spaces available for  
office and medical



## PLAZA SQUARE NORTH



TOTAL SIZE  
**100,395 SF**



YEAR BUILT  
**1986/2013**



BUILDING CLASS  
**A**



PARKING RATIO  
**3.66/1000 SF**



AREA  
**DUNWOODY  
CHAMBLEE  
BROOKHAVEN**

# PLAZA SQUARE NORTH INTERIOR PHOTOS



# PLAZA SQUARE NORTH PROPERTY PHOTOS

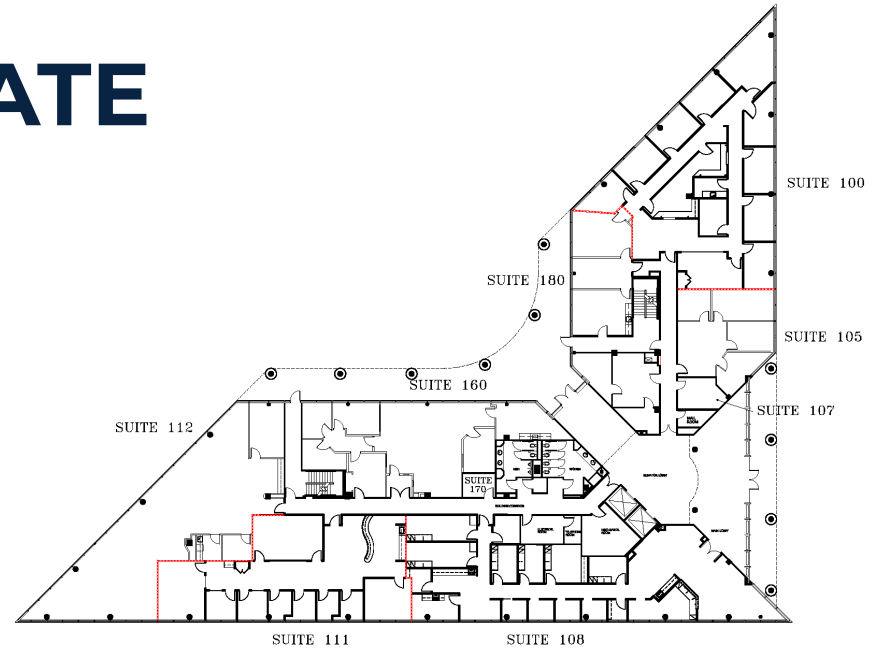


A photograph of a modern, multi-story office building with a glass facade. The building is surrounded by greenery, including trees and manicured bushes. A large red sign with white text is mounted on the upper part of the building's facade. The sky is blue with some light clouds. In the top right corner, there are two overlapping teal circles.

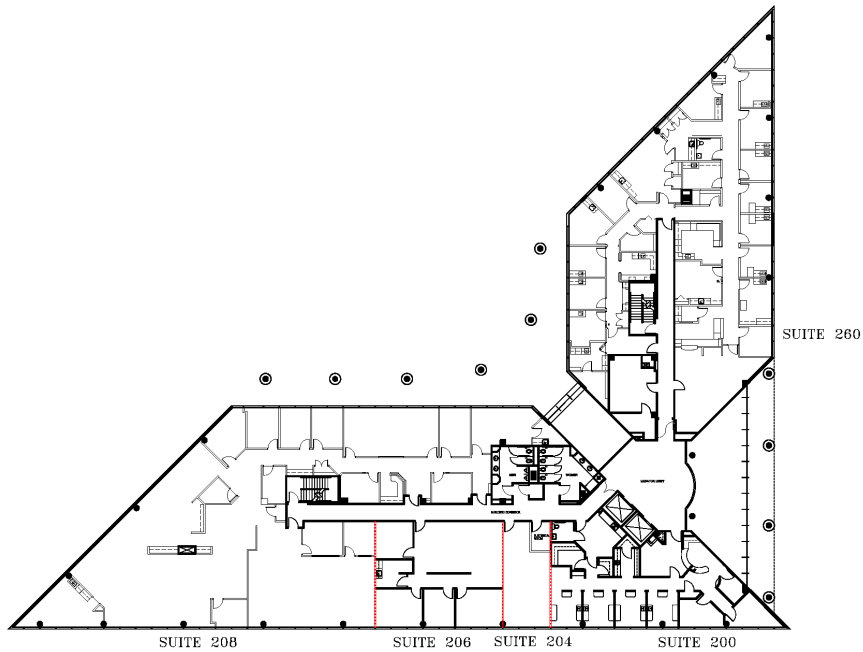
# SIGNAGE OPPORTUNITY

# PLAZA SQUARE NORTH

## TYPICAL FLOOR PLATE



FIRST FLOOR



SECOND FLOOR



FOURTH FLOOR  
*16,522 Contiguous RSF Available*



4360 CHAMBLEE  
DUNWOODY RD

CHAMBLEE DUNWOODY RD

SITE PLAN







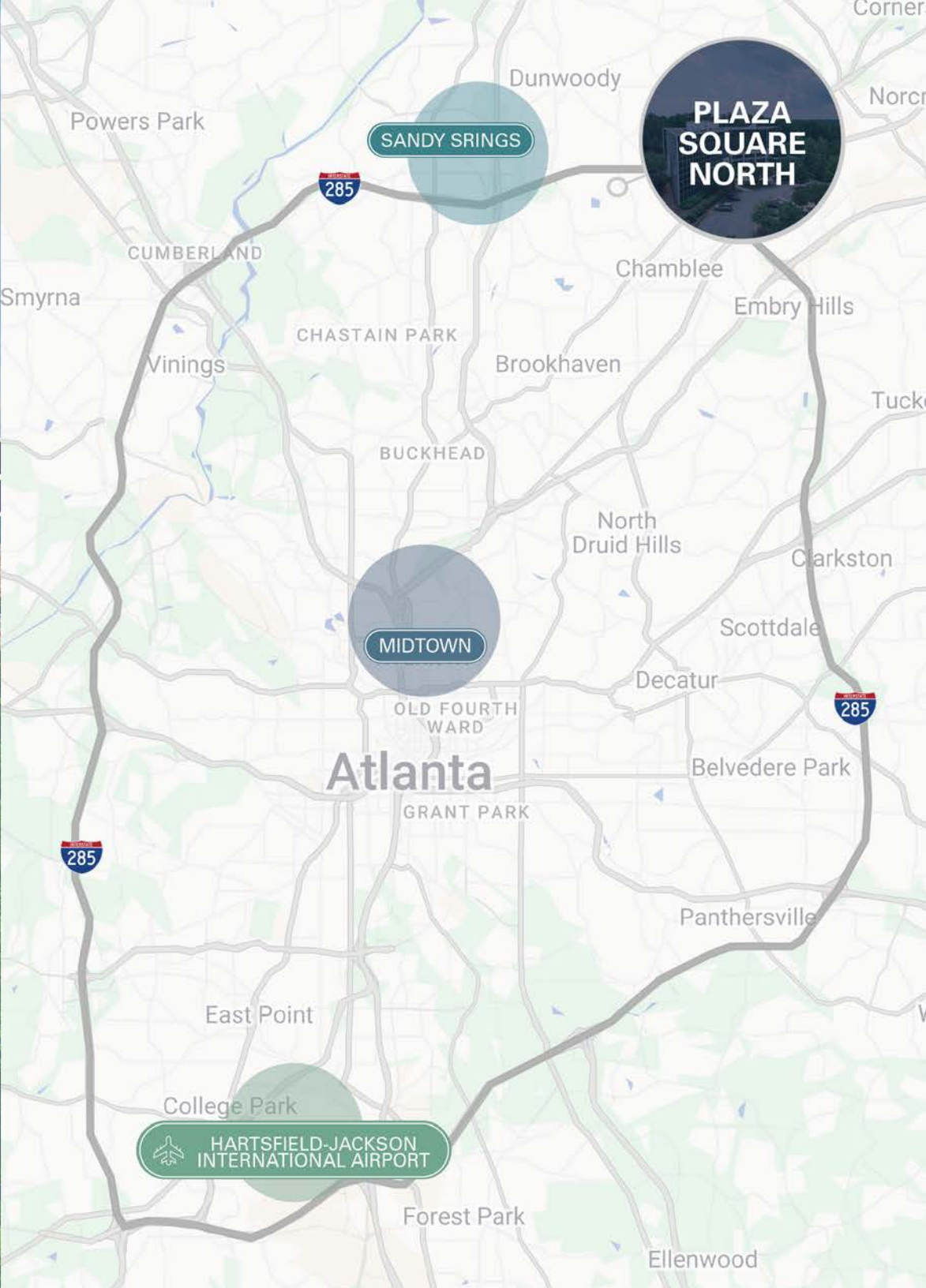
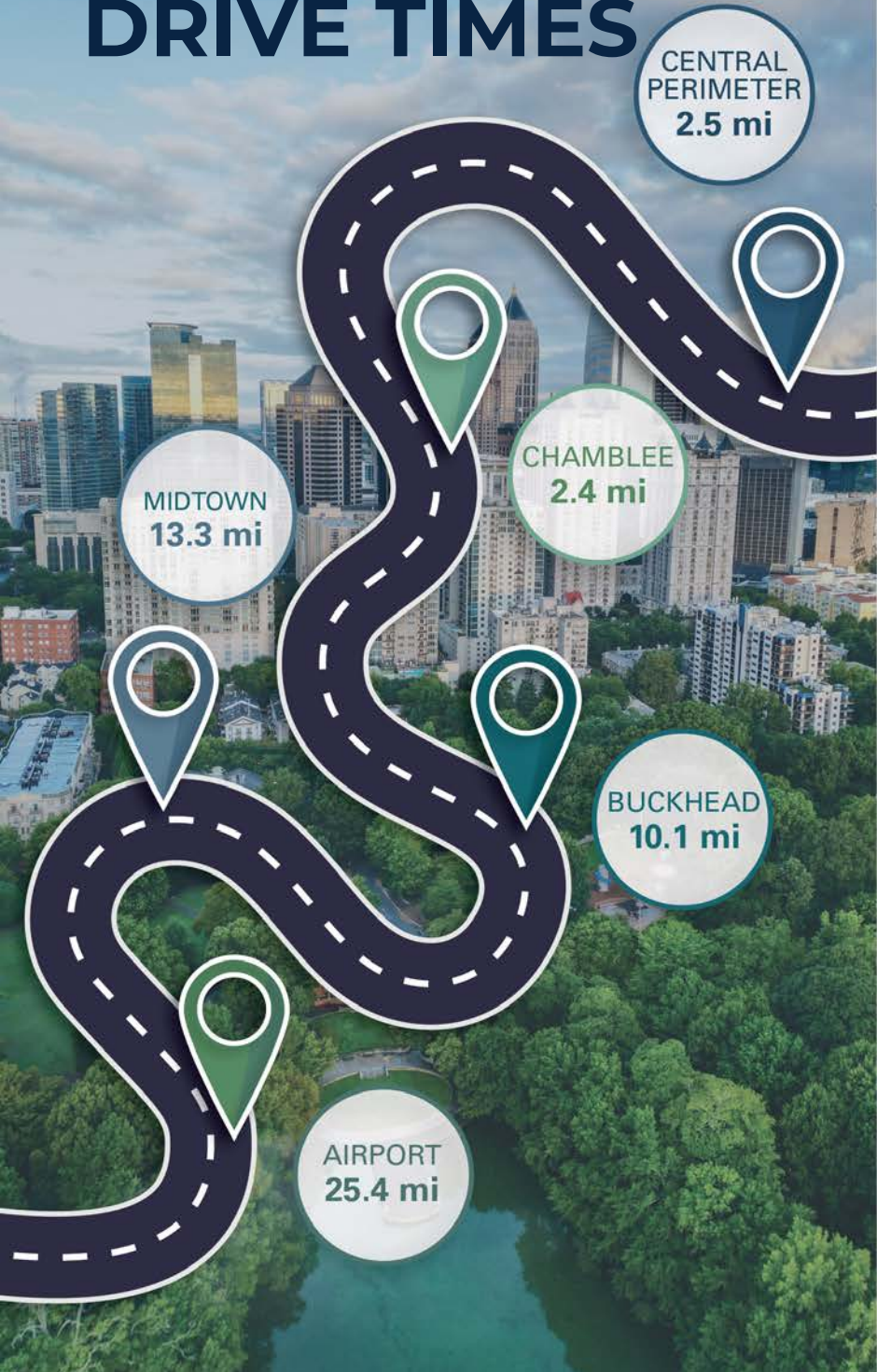
CENTRAL PERIMETER

INTERSTATE  
285

PLAZA  
SQUARE  
NORTH

THE MARKET

# PLAZA SQUARE NORTH DRIVE TIMES



# PLAZA SQUARE NORTH IN THE NEIGHBORHOOD



RESTAURANTS

**58**



SHOPPING

**52**



LODGING

**46**



ENTERTAINMENT

**31**

WORKOUT



COFFEE



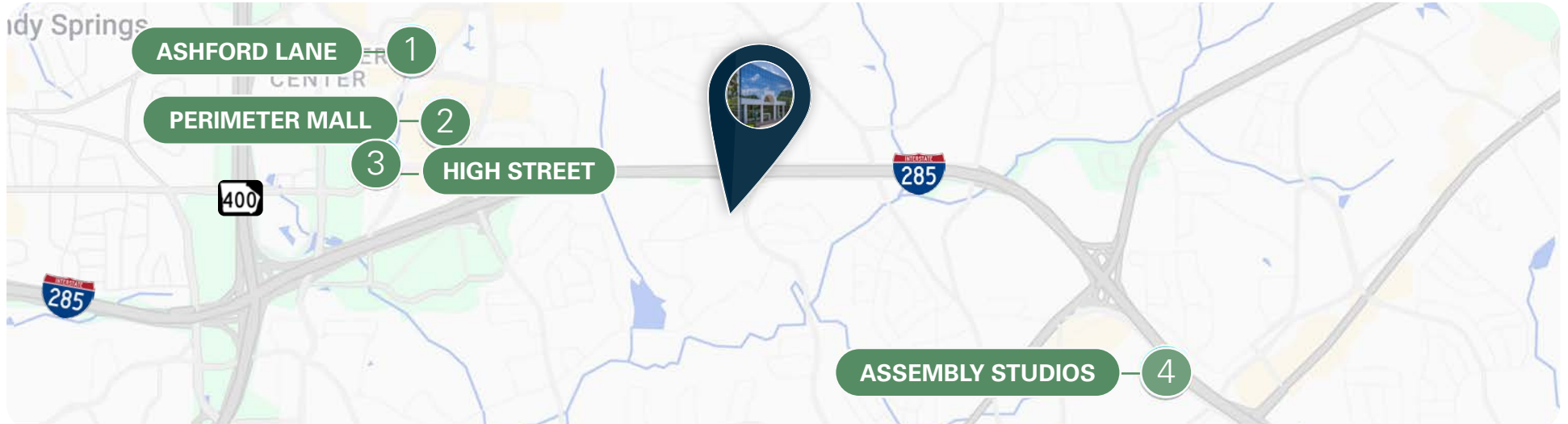
LUNCH



DINNER MEETINGS



\*WITHIN 3-MI



---

# 4360 CHAMBLEE DUNWOODY RD

## ATLANTA, GA 30341

---

### FOR MORE INFORMATION CONTACT:

**Stewart Thrash**

Senior Managing Director  
m 678-322-6772  
stewart.thrash@nmrk.com

**RJ Zurak**

Senior Managing Director  
m 716-864-2581  
rj.zurak@nmrk.com

**Lindsay Kalski**

Associate Director  
m 414-897-2811  
lindsay.kalski@nmrk.com

**NEWMARK**