

COCCA DEVELOPMENT

VACANT LAND FOR BTS STATE ROUTE 711 SEWARD, PA 15954



- Plot is approximately 16 acres and is located next to Dollar General and Roadway Pharmacy just south of the residential area
- Easy ingress on to State Route 711
- Approximately 3,000 cars pass by daily

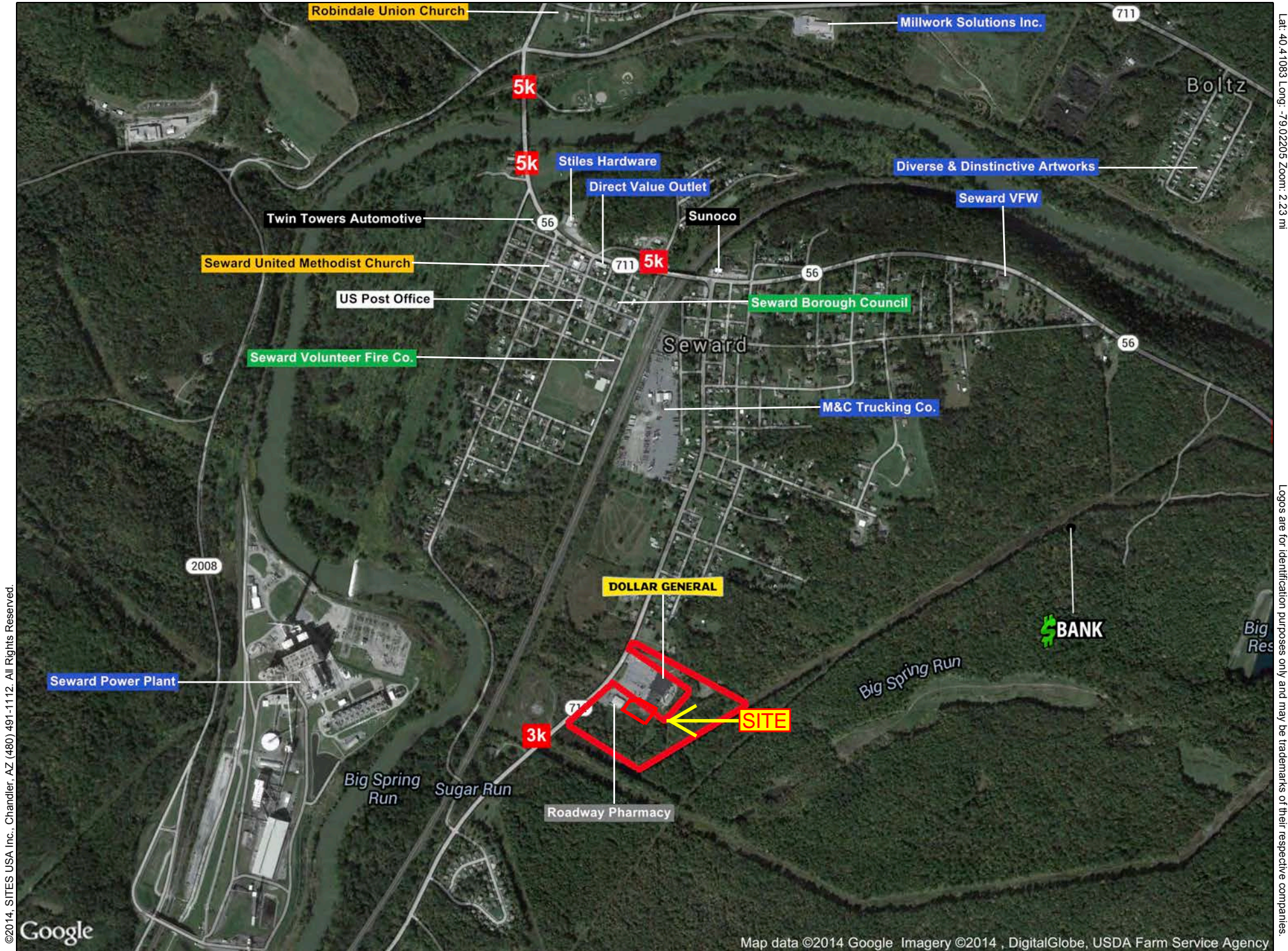
AVAILABLE AREA—\$/square foot NNN:

WILL BUILD TO SUIT

NNN: Base rent plus prorata share of Real Estate Taxes, Insurance, and Common Area expenses, including but not limited to snow removal, lawn care, and parking lot maintenance. Tenant pays separately metered utilities for gas, electric, water, sewer, & trash removal.

CALL 330-729-1010 FOR MORE INFORMATION

www.coccadevelopment.com



©2014, SITES USA Inc., Chandler, AZ (480) 491-1112. All Rights Reserved.

Google

Map data ©2014 Google Imagery ©2014 , DigitalGlobe, USDA Farm Service Agency

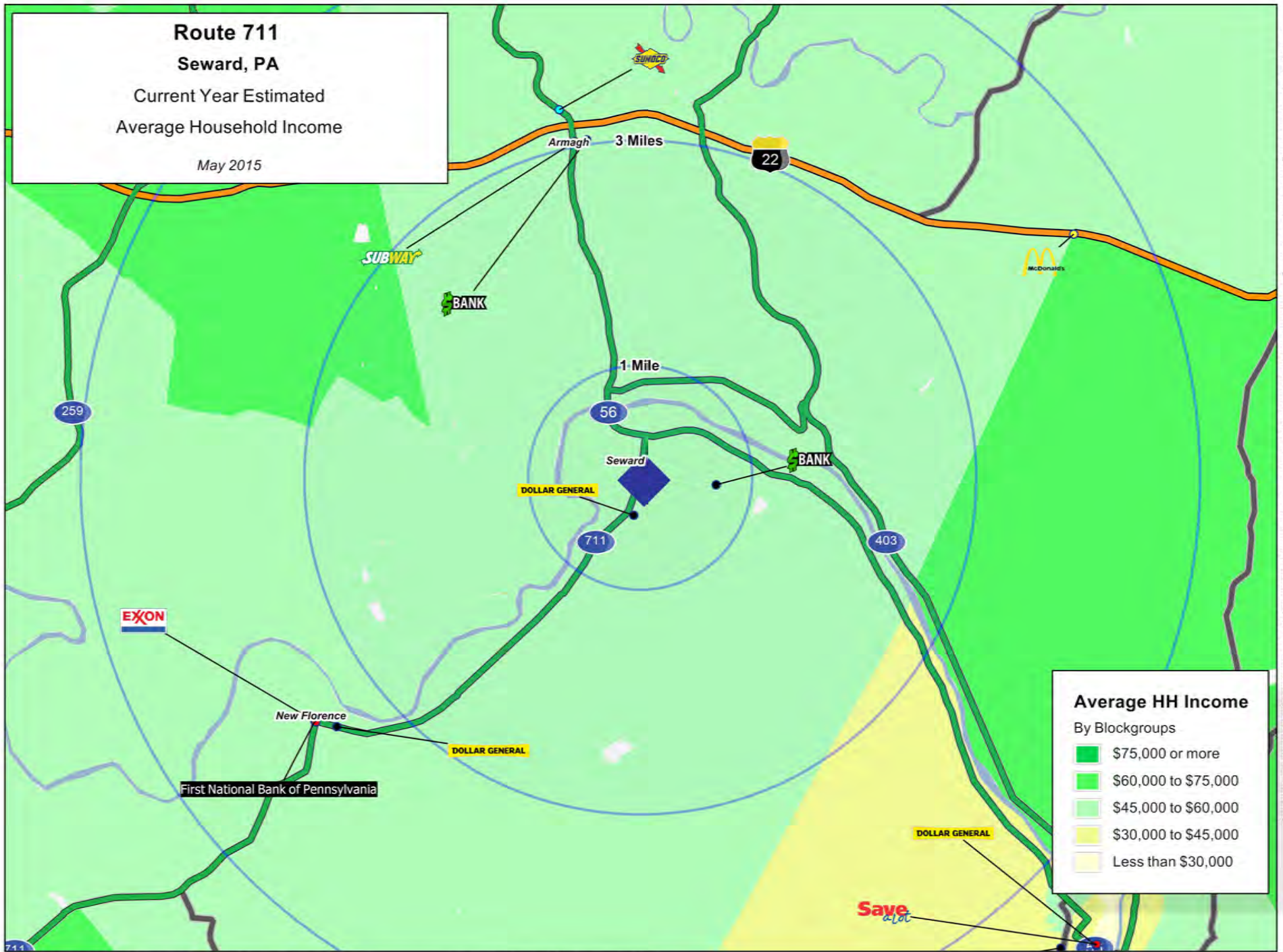
This map was produced using data from private and government sources deemed to be reliable. The information herein is provided without representation or warranty

Lat: 40.41083 Long: -79.02205 Zoom: 2.23 mi

Logos are for identification purposes only and may be trademarks of their respective companies.

Route 711
Seward, PA
 Current Year Estimated
 Average Household Income

May 2015



Average HH Income
 By Blockgroups

- \$75,000 or more
- \$60,000 to \$75,000
- \$45,000 to \$60,000
- \$30,000 to \$45,000
- Less than \$30,000

This map was produced using data from private and government sources deemed to be reliable. The information herein is provided without representation or warranty.

GRAPHIC PROFILE

2000-2010 Census, 2014 Estimates with 2019 Projections

Calculated using Proportional Block Groups

Lat/Lon: 40.4105/-79.0205

RGRAP3

Route 711

Seward, PA

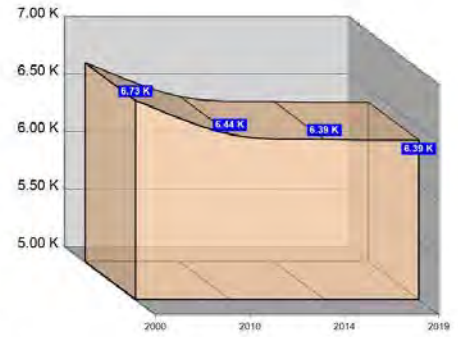
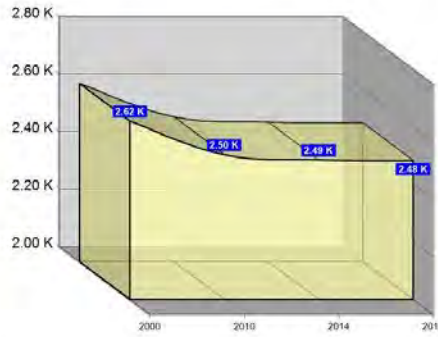
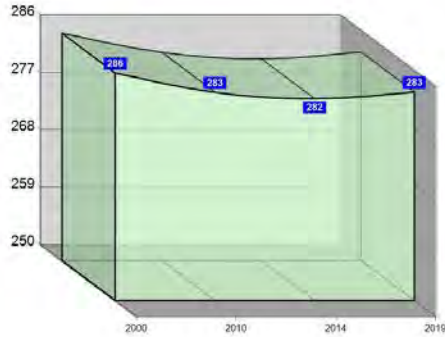
1 Mile

3 Miles

5 Miles

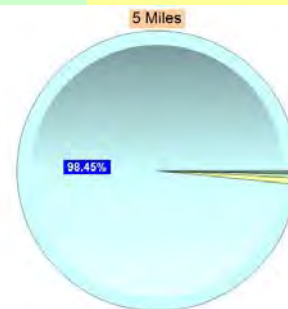
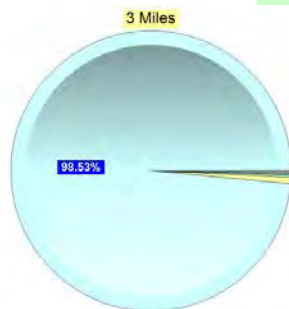
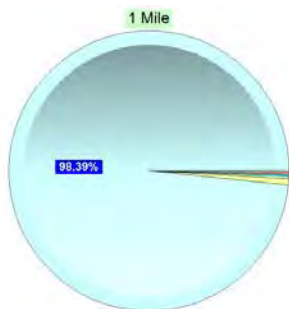
Population

Estimated Population (2014)	282	2,485	6,392
Projected Population (2019)	283	2,483	6,386
Census Population (2010)	283	2,504	6,437
Census Population (2000)	286	2,620	6,730
Projected Annual Growth (2014-2019)	1 0.1%	-3 -	-7 -
Historical Annual Growth (2010-2014)	-1 -0.3%	-18 -1.2%	-45 -1.1%
Historical Annual Growth (2000-2010)	-3 -0.1%	-117 -0.4%	-293 -0.4%
Estimated Population Density (2014)	90 <i>psm</i>	88 <i>psm</i>	81 <i>psm</i>
Trade Area Size	3.1 <i>sq mi</i>	28.3 <i>sq mi</i>	78.5 <i>sq mi</i>



Race and Ethnicity (2014)

Not Hispanic or Latino Population	279 98.9%	2,461 99.0%	6,331 99.0%
White	275 98.7%	2,431 98.8%	6,248 98.7%
Black or African American	1 0.3%	5 0.2%	23 0.4%
American Indian or Alaska Native	- 0.1%	2 0.1%	5 0.1%
Asian	1 0.2%	5 0.2%	10 0.2%
Hawaiian or Pacific Islander	- -	- -	- -
Other Race	- -	1 -	1 -
Two or More Races	2 0.7%	17 0.7%	43 0.7%
Hispanic or Latino Population	3 1.1%	25 1.0%	62 1.0%
White	2 73.1%	18 70.6%	45 73.0%
Black or African American	- -	1 3.1%	2 3.9%
American Indian or Alaska Native	- 1.3%	1 2.0%	1 1.5%
Asian	- -	- -	- -
Hispanic Hawaiian or Pacific Islander	- -	- -	- -
Other Race	1 23.0%	5 20.3%	11 17.3%
Two or More Races	- 2.6%	1 4.0%	3 4.3%



White Black or African American American Indian or Alaska Native Asian Hawaiian or Pacific Islander Other Race 2+ Races

This report was produced using data from private and government sources deemed to be reliable. The information herein is provided without representation or warranty.

GRAPHIC PROFILE

2000-2010 Census, 2014 Estimates with 2019 Projections

Calculated using Proportional Block Groups

Lat/Lon: 40.4105/-79.0205

RGRAP3

Route 711

Seward, PA

1 Mile

3 Miles

5 Miles

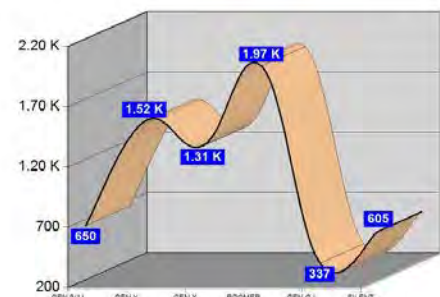
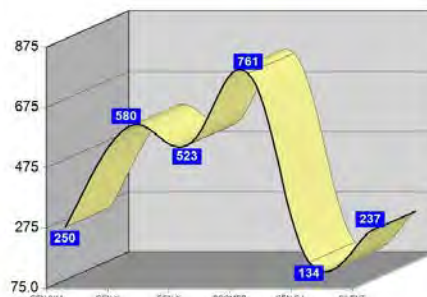
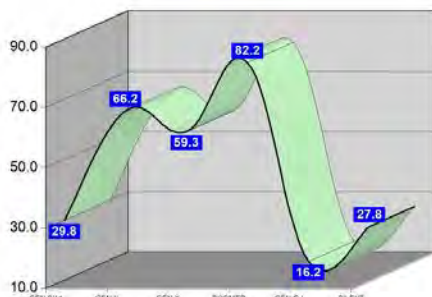
Age Distribution (2014)

	1 Mile	3 Miles	5 Miles
Age Under 5 Years	14 5.0%	115 4.6%	296 4.6%
Age 5 to 9 Years	16 5.6%	136 5.5%	354 5.5%
Age 10 to 14 Years	16 5.7%	150 6.0%	375 5.9%
Age 15 to 19 Years	16 5.6%	133 5.3%	341 5.3%
Age 20 to 24 Years	12 4.4%	106 4.3%	265 4.2%
Age 25 to 29 Years	15 5.3%	134 5.4%	329 5.2%
Age 30 to 34 Years	16 5.6%	143 5.7%	364 5.7%
Age 35 to 39 Years	14 4.8%	123 4.9%	323 5.1%
Age 40 to 44 Years	18 6.4%	152 6.1%	399 6.2%
Age 45 to 49 Years	19 6.7%	163 6.5%	429 6.7%
Age 50 to 54 Years	23 8.1%	208 8.4%	530 8.3%
Age 55 to 59 Years	24 8.7%	228 9.2%	581 9.1%
Age 60 to 64 Years	18 6.5%	182 7.3%	479 7.5%
Age 65 to 69 Years	17 6.0%	144 5.8%	384 6.0%
Age 70 to 74 Years	17 6.2%	153 6.2%	387 6.1%
Age 75 to 79 Years	10 3.7%	84 3.4%	218 3.4%
Age 80 to 84 Years	9 3.2%	74 3.0%	180 2.8%
Age 85 Years or Over	7 2.6%	60 2.4%	157 2.5%
Median Age	45.2	45.7	45.7

Generation (2014)

	1 Mile	3 Miles	5 Miles
Generation 9/11 Millennials (Age Under 10 Years)	30 10.6%	250 10.1%	650 10.2%
Gen Y to Echo Boomers (Age 10 to 29 Years)	59 21.1%	523 21.0%	1,311 20.5%
Gen Xers (Age 30 to 49 Years)	66 23.5%	580 23.3%	1,515 23.7%
Baby Boomers (Age 50 to 69 Years)	82 29.2%	761 30.6%	1,974 30.9%
Silent Generation (Age 70 to 79 Years)	28 9.9%	237 9.5%	605 9.5%
G.I. Generation (Age 80 Years or Over)	16 5.7%	134 5.4%	337 5.3%

This report was produced using data from private and government sources deemed to be reliable. The information herein is provided without representation or warranty.



GRAPHIC PROFILE

2000-2010 Census, 2014 Estimates with 2019 Projections

Calculated using Proportional Block Groups

Lat/Lon: 40.4105/-79.0205

RGRAP3

Route 711

Seward, PA

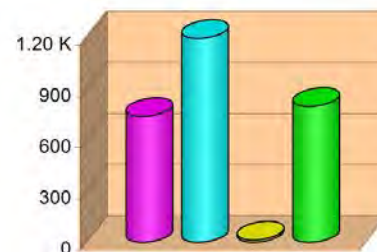
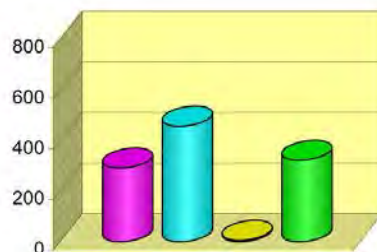
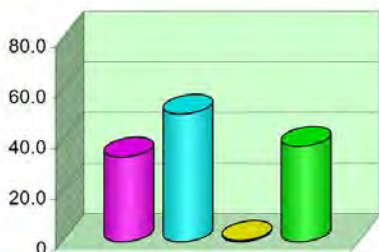
1 Mile

3 Miles

5 Miles

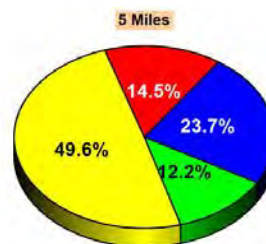
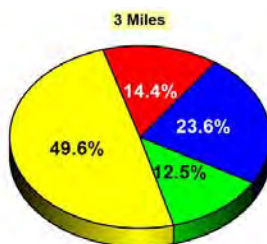
Household Type (2014)

	1 Mile	3 Miles	5 Miles
Total Households	122	1,077	2,745
Family Households	84 41.3%	749 42.5%	1,934 43.6%
Family Households with Children	33 39.9%	292 39.0%	738 38.2%
Family Households No Children	50 60.1%	457 61.0%	1,196 61.8%
Non-Family Households	38 41.3%	328 42.5%	811 43.6%
Non-Family Households with Children	1 1.4%	5 1.6%	14 1.7%
Non-Family Households No Children	38 98.6%	322 98.4%	797 98.3%



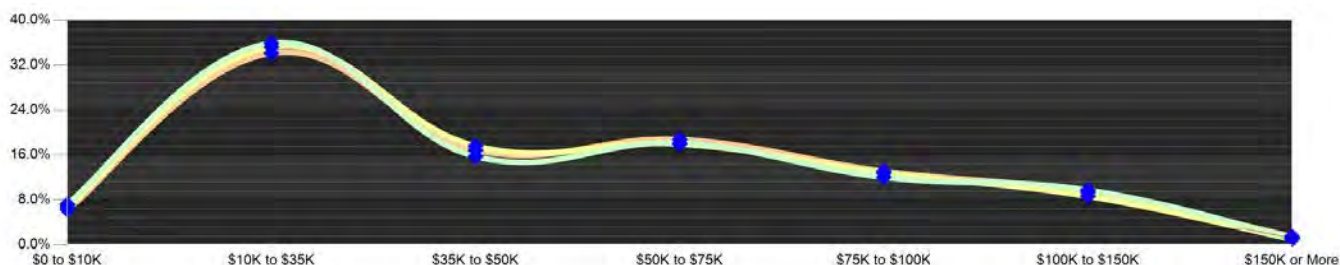
Education Attainment (2014)

	1 Mile	3 Miles	5 Miles
Elementary or Some High School	30 14.6%	265 14.4%	690 14.5%
High School Graduate	101 48.7%	915 49.6%	2,355 49.6%
Some College or Associate Degree	51 24.4%	435 23.6%	1,126 23.7%
Bachelor or Graduate Degree	26 12.3%	231 12.5%	578 12.2%



Household Income (2014)

	1 Mile	3 Miles	5 Miles
Estimated Average Household Income	\$43,016	\$43,435	\$45,449
Estimated Median Household Income	\$35,073	\$35,823	\$38,496
HH Income Under \$10,000	9 7.2%	73 6.8%	171 6.2%
HH Income \$10,000 to \$34,999	44 35.9%	379 35.2%	938 34.2%
HH Income \$35,000 to \$49,999	19 15.7%	190 17.6%	463 16.9%
HH Income \$50,000 to \$74,999	22 18.1%	194 18.0%	515 18.8%
HH Income \$75,000 to \$99,999	12 9.7%	93 8.6%	257 9.4%
HH Income \$100,000 to \$149,999	12 9.7%	93 8.6%	257 9.4%
HH Income \$150,000 or More	1 1.2%	11 1.0%	41 1.5%



This report was produced using data from private and government sources deemed to be reliable. The information herein is provided without representation or warranty.

EXPANDED PROFILE

2000-2010 Census, 2014 Estimates with 2019 Projections

Calculated using Proportional Block Groups

Lat/Lon: 40.4105/-79.0205

RF5

Route 711	1 Mile	3 Miles	5 Miles
Seward, PA			
Population			
Estimated Population (2014)	282	2,485	6,392
Projected Population (2019)	283	2,483	6,386
Census Population (2010)	283	2,504	6,437
Census Population (2000)	286	2,620	6,730
Projected Annual Growth (2014 to 2019)	1 0.1%	-3 -	-7 -
Historical Annual Growth (2010 to 2014)	-1 -0.1%	-18 -0.2%	-45 -0.2%
Historical Annual Growth (2000 to 2010)	-3 -0.1%	-117 -0.4%	-293 -0.4%
Estimated Population Density (2014)	90 <i>psm</i>	88 <i>psm</i>	81 <i>psm</i>
Trade Area Size	3.14 <i>sq mi</i>	28.26 <i>sq mi</i>	78.49 <i>sq mi</i>
Households			
Estimated Households (2014)	122	1,077	2,745
Projected Households (2019)	125	1,104	2,811
Census Households (2010)	120	1,062	2,708
Census Households (2000)	116	1,047	2,689
Estimated Households with Children (2014)	34 27.8%	297 27.6%	752 27.4%
Estimated Average Household Size (2014)	2.30	2.31	2.32
Average Household Income			
Estimated Average Household Income (2014)	\$49,197	\$49,328	\$51,361
Projected Average Household Income (2019)	\$53,081	\$53,041	\$55,349
Estimated Average Family Income (2014)	\$57,225	\$56,162	\$58,521
Median Household Income			
Estimated Median Household Income (2014)	\$40,284	\$40,447	\$43,033
Projected Median Household Income (2019)	\$43,531	\$43,573	\$46,394
Estimated Median Family Income (2014)	\$51,458	\$50,146	\$52,317
Per Capita Income			
Estimated Per Capita Income (2014)	\$21,349	\$21,375	\$22,079
Projected Per Capita Income (2019)	\$23,516	\$23,592	\$24,390
Estimated Per Capita income 5 Year Growth	\$2,167 10.2%	\$2,216 10.4%	\$2,311 10.5%
Estimated Average Household Net Worth (2014)	\$292,901	\$288,457	\$296,603
Daytime Demos (2014)			
Total Businesses	9	66	159
Total Employees	66	521	1,277
Company Headquarter Businesses	- -	- -	- 0.2%
Company Headquarter Employees	- -	- 0.1%	18 1.4%
Employee Population per Business	7.6	7.9	8.0
Residential Population per Business	32.8	37.8	40.1

This report was produced using data from private and government sources deemed to be reliable. The information herein is provided without representation or warranty.

EXPANDED PROFILE

2000-2010 Census, 2014 Estimates with 2019 Projections

Calculated using Proportional Block Groups

Lat/Lon: 40.4105/-79.0205

RF5

Route 711	1 Mile		3 Miles		5 Miles	
Seward, PA						
Race & Ethnicity						
White (2014)	277	98.4%	2,449	98.5%	6,293	98.5%
Black or African American (2014)	1	0.3%	6	0.2%	25	0.4%
American Indian or Alaska Native (2014)	-	0.1%	2	0.1%	6	0.1%
Asian (2014)	1	0.2%	5	0.2%	10	0.2%
Hawaiian or Pacific Islander (2014)	-	-	-	-	-	-
Other Race (2014)	1	0.3%	6	0.2%	12	0.2%
Two or More Races (2014)	2	0.7%	18	0.7%	46	0.7%
Not Hispanic or Latino Population (2014)	279	98.9%	2,461	99.0%	6,331	99.0%
Hispanic or Latino Population (2014)	3	1.1%	25	1.0%	62	1.0%
Not Hispanic or Latino Population (2019)	279	98.7%	2,454	98.8%	6,314	98.9%
Hispanic or Latino Population (2019)	4	1.3%	29	1.2%	72	1.1%
Not Hispanic or Latino Population (2010)	280	99.1%	2,484	99.2%	6,388	99.2%
Hispanic or Latino Population (2010)	2	0.9%	20	0.8%	49	0.8%
Not Hispanic or Latino Population (2000)	284	99.5%	2,608	99.5%	6,698	99.5%
Hispanic or Latino Population (2000)	1	0.5%	12	0.5%	32	0.5%
Projected Hispanic Annual Growth (2014 to 2019)	1	3.6%	4	3.3%	10	3.2%
Historic Hispanic Annual Growth (2000 to 2014)	2	7.3%	13	7.8%	30	6.7%
Age Distribution (2014)						
Age Under 5	14	5.0%	115	4.6%	296	4.6%
Age 5 to 9 Years	16	5.6%	136	5.5%	354	5.5%
Age 10 to 14 Years	16	5.7%	150	6.0%	375	5.9%
Age 15 to 19 Years	16	5.6%	133	5.3%	341	5.3%
Age 20 to 24 Years	12	4.4%	106	4.3%	265	4.2%
Age 25 to 29 Years	15	5.3%	134	5.4%	329	5.2%
Age 30 to 34 Years	16	5.6%	143	5.7%	364	5.7%
Age 35 to 39 Years	14	4.8%	123	4.9%	323	5.1%
Age 40 to 44 Years	18	6.4%	152	6.1%	399	6.2%
Age 45 to 49 Years	19	6.7%	163	6.5%	429	6.7%
Age 50 to 54 Years	23	8.1%	208	8.4%	530	8.3%
Age 55 to 59 Years	24	8.7%	228	9.2%	581	9.1%
Age 60 to 64 Years	18	6.5%	182	7.3%	479	7.5%
Age 65 to 74 Years	34	12.1%	298	12.0%	771	12.1%
Age 75 to 84 Years	19	6.9%	157	6.3%	398	6.2%
Age 85 Years or Over	7	2.6%	60	2.4%	157	2.5%
Median Age	45.2		45.7		45.7	
Gender Age Distribution (2014)						
Female Population	143	50.8%	1,255	50.5%	3,206	50.2%
Age 0 to 19 Years	30	20.6%	259	20.7%	663	20.7%
Age 20 to 64 Years	79	55.5%	713	56.8%	1,821	56.8%
Age 65 Years or Over	34	23.8%	282	22.5%	722	22.5%
Female Median Age	46.4		46.5		46.5	
Male Population	139	49.2%	1,231	49.5%	3,186	49.8%
Age 0 to 19 Years	32	23.3%	274	22.3%	703	22.1%
Age 20 to 64 Years	80	57.4%	724	58.8%	1,880	59.0%
Age 65 Years or Over	27	19.3%	233	18.9%	604	18.9%
Male Median Age	44.1		44.9		44.9	

This report was produced using data from private and government sources deemed to be reliable. The information herein is provided without representation or warranty.

EXPANDED PROFILE

2000-2010 Census, 2014 Estimates with 2019 Projections

Calculated using Proportional Block Groups

Lat/Lon: 40.4105/-79.0205

RF5

Route 711 Seward, PA	1 Mile		3 Miles		5 Miles	
Household Income Distribution (2014)						
HH Income \$200,000 or More	-	0.2%	2	0.2%	9	0.3%
HH Income \$150,000 to \$199,999	1	1.0%	9	0.8%	32	1.2%
HH Income \$100,000 to \$149,999	12	9.7%	93	8.6%	257	9.4%
HH Income \$75,000 to \$99,999	15	12.0%	138	12.8%	360	13.1%
HH Income \$50,000 to \$74,999	22	18.1%	194	18.0%	515	18.8%
HH Income \$35,000 to \$49,999	19	15.7%	190	17.6%	463	16.9%
HH Income \$25,000 to \$34,999	19	15.3%	171	15.9%	403	14.7%
HH Income \$15,000 to \$24,999	18	14.9%	147	13.6%	385	14.0%
HH Income Under \$15,000	16	12.9%	134	12.4%	321	11.7%
HH Income \$35,000 or More	69	56.9%	625	58.0%	1,636	59.6%
HH Income \$75,000 or More	28	23.0%	242	22.4%	658	24.0%
Housing (2014)						
Total Housing Units	130		1,137		2,906	
Housing Units Occupied	122	94.2%	1,077	94.7%	2,745	94.5%
Housing Units Owner-Occupied	96	78.5%	878	81.5%	2,283	83.2%
Housing Units, Renter-Occupied	26	21.5%	199	18.5%	462	16.8%
Housing Units, Vacant	8	5.8%	60	5.3%	161	5.5%
Marital Status (2014)						
Never Married	53	22.6%	488	23.4%	1,224	22.8%
Currently Married	133	56.3%	1,176	56.4%	3,109	57.9%
Separated	6	2.5%	52	2.5%	125	2.3%
Widowed	24	10.0%	185	8.9%	452	8.4%
Divorced	20	8.6%	184	8.8%	457	8.5%
Household Type (2014)						
Population Family	233	82.9%	2,070	83.3%	5,338	83.5%
Population Non-Family	48	17.1%	416	16.7%	1,041	16.3%
Population Group Quarters	-	-	-	-	13	0.2%
Family Households	84	68.7%	749	69.6%	1,934	70.5%
Non-Family Households	38	31.3%	328	30.4%	811	29.5%
Married Couple with Children	22	16.6%	193	16.4%	502	16.2%
Average Family Household Size	2.8		2.8		2.8	
Household Size (2014)						
1 Person Households	34	27.5%	287	26.7%	705	25.7%
2 Person Households	46	37.9%	414	38.5%	1,075	39.2%
3 Person Households	20	16.1%	177	16.4%	456	16.6%
4 Person Households	15	12.0%	132	12.3%	340	12.4%
5 Person Households	6	4.9%	48	4.5%	121	4.4%
6 or More Person Households	2	1.6%	18	1.7%	48	1.7%
Household Vehicles (2014)						
Households with 0 Vehicles Available	7	6.0%	49	4.5%	130	4.7%
Households with 1 Vehicles Available	46	37.7%	391	36.3%	948	34.5%
Households with 2 or More Vehicles Available	69	56.4%	637	59.1%	1,667	60.7%
Total Vehicles Available	219		1,996		5,171	
Average Vehicles Per Household	1.8		1.9		1.9	

This report was produced using data from private and government sources deemed to be reliable. The information herein is provided without representation or warranty.

EXPANDED PROFILE

2000-2010 Census, 2014 Estimates with 2019 Projections

Calculated using Proportional Block Groups

Lat/Lon: 40.4105/-79.0205

RF5

Route 711

Seward, PA

Labor Force (2014)

	1 Mile	3 Miles	5 Miles
Estimated Labor Population Age 16 Years or Over	233	2,063	5,298
Estimated Civilian Employed	118 50.8%	1,044 50.6%	2,735 51.6%
Estimated Civilian Unemployed	7 2.9%	56 2.7%	148 2.8%
Estimated in Armed Forces	- 0.1%	1 0.1%	3 0.1%
Estimated Not in Labor Force	108 46.2%	962 46.6%	2,411 45.5%
Unemployment Rate	2.9%	2.7%	2.8%

Occupation (2010)

	1 Mile	3 Miles	5 Miles
Occupation: Population Age 16 Years or Over	107	981	2,643
Management, Business, Financial Operations	7 7.0%	67 6.8%	192 7.3%
Professional, Related	21 19.4%	185 18.9%	504 19.1%
Service	21 19.6%	186 18.9%	500 18.9%
Sales, Office	23 21.2%	207 21.1%	580 21.9%
Farming, Fishing, Forestry	1 0.6%	8 0.8%	18 0.7%
Construct, Extraction, Maintenance	14 13.3%	142 14.4%	355 13.4%
Production, Transport Material Moving	20 19.0%	188 19.1%	494 18.7%
White Collar Workers	51 47.6%	458 46.7%	1,276 48.3%
Blue Collar Workers	56 52.4%	523 53.3%	1,366 51.7%

Consumer Expenditure (2014)

	1 Mile	3 Miles	5 Miles
Total Household Expenditure	\$5.29 M	\$46.7 M	\$122 M
Total Non-Retail Expenditure	\$3.03 M 57.2%	\$26.7 M 57.2%	\$70.0 M 57.3%
Total Retail Expenditure	\$2.26 M 42.8%	\$20.0 M 42.8%	\$52.2 M 42.7%
Apparel	\$250 K 4.7%	\$2.20 M 4.7%	\$5.77 M 4.7%
Contributions	\$180 K 3.4%	\$1.58 M 3.4%	\$4.19 M 3.4%
Education	\$112 K 2.1%	\$976 K 2.1%	\$2.58 M 2.1%
Entertainment	\$293 K 5.5%	\$2.59 M 5.5%	\$6.78 M 5.6%
Food and Beverages	\$829 K 15.7%	\$7.32 M 15.7%	\$19.1 M 15.6%
Furnishings and Equipment	\$225 K 4.2%	\$1.99 M 4.3%	\$5.22 M 4.3%
Gifts	\$132 K 2.5%	\$1.16 M 2.5%	\$3.05 M 2.5%
Health Care	\$343 K 6.5%	\$3.03 M 6.5%	\$7.89 M 6.5%
Household Operations	\$177 K 3.4%	\$1.56 M 3.3%	\$4.12 M 3.4%
Miscellaneous Expenses	\$91.1 K 1.7%	\$803 K 1.7%	\$2.09 M 1.7%
Personal Care	\$76.9 K 1.5%	\$679 K 1.5%	\$1.78 M 1.5%
Personal Insurance	\$50.3 K 0.9%	\$443 K 0.9%	\$1.17 M 1.0%
Reading	\$17.3 K 0.3%	\$153 K 0.3%	\$401 K 0.3%
Shelter	\$1.01 M 19.2%	\$8.94 M 19.1%	\$23.4 M 19.2%
Tobacco	\$38.2 K 0.7%	\$340 K 0.7%	\$877 K 0.7%
Transportation	\$1.08 M 20.3%	\$9.52 M 20.4%	\$24.9 M 20.4%
Utilities	\$385 K 7.3%	\$3.41 M 7.3%	\$8.85 M 7.2%

Educational Attainment (2014)

	1 Mile	3 Miles	5 Miles
Adult Population Age 25 Years or Over	207	1,846	4,749
Elementary (Grade Level 0 to 8)	8 4.1%	72 3.9%	192 4.0%
Some High School (Grade Level 9 to 11)	22 10.5%	194 10.5%	499 10.5%
High School Graduate	101 48.7%	915 49.6%	2,355 49.6%
Some College	34 16.4%	303 16.4%	768 16.2%
Associate Degree Only	17 8.0%	132 7.1%	358 7.5%
Bachelor Degree Only	17 8.4%	155 8.4%	395 8.3%
Graduate Degree	8 3.9%	75 4.1%	183 3.8%

This report was produced using data from private and government sources deemed to be reliable. The information herein is provided without representation or warranty.

EXPANDED PROFILE

2000-2010 Census, 2014 Estimates with 2019 Projections

Calculated using Proportional Block Groups

Lat/Lon: 40.4105/-79.0205

RF5

Route 711

Seward, PA

Units In Structure (2010)

	1 Mile		3 Miles		5 Miles	
1 Detached Unit	89	73.7%	783	73.7%	2,042	75.4%
1 Attached Unit	5	4.6%	53	5.0%	136	5.0%
2 to 4 Units	11	9.5%	71	6.7%	141	5.2%
5 to 9 Units	-	0.2%	3	0.3%	6	0.2%
10 to 19 Units	-	0.1%	-	-	2	0.1%
20 to 49 Units	-	0.1%	-	-	1	-
50 or More Units	-	0.3%	3	0.2%	5	0.2%
Mobile Home or Trailer	14	11.6%	149	14.0%	373	13.8%
Other Structure	-	-	-	-	-	-

Homes Built By Year (2010)

Homes Built 2005 or later	5	3.9%	37	3.5%	87	3.2%
Homes Built 2000 to 2004	3	2.9%	39	3.7%	101	3.7%
Homes Built 1990 to 1999	10	8.4%	95	8.9%	243	9.0%
Homes Built 1980 to 1989	12	9.9%	113	10.6%	297	11.0%
Homes Built 1970 to 1979	16	13.3%	168	15.8%	431	15.9%
Homes Built 1960 to 1969	12	9.7%	101	9.5%	243	9.0%
Homes Built 1950 to 1959	19	15.5%	147	13.9%	387	14.3%
Homes Built Before 1949	44	36.4%	363	34.2%	919	33.9%

Home Values (2010)

Home Values \$1,000,000 or More	-	0.1%	2	0.2%	5	0.2%
Home Values \$500,000 to \$999,999	1	1.5%	11	1.3%	35	1.5%
Home Values \$400,000 to \$499,999	2	1.6%	16	1.8%	36	1.6%
Home Values \$300,000 to \$399,999	2	2.4%	21	2.5%	53	2.3%
Home Values \$200,000 to \$299,999	8	8.4%	72	8.3%	196	8.7%
Home Values \$150,000 to \$199,999	12	12.8%	119	13.8%	297	13.2%
Home Values \$100,000 to \$149,999	21	22.6%	179	20.8%	465	20.7%
Home Values \$70,000 to \$99,999	18	19.5%	162	18.8%	435	19.3%
Home Values \$50,000 to \$69,999	10	10.7%	101	11.6%	264	11.7%
Home Values \$25,000 to \$49,999	12	12.3%	111	12.8%	282	12.6%
Home Values Under \$25,000	7	7.9%	71	8.2%	182	8.1%
Owner-Occupied Median Home Value	\$98,657		\$96,355		\$96,562	
Renter-Occupied Median Rent	\$409		\$422		\$427	

Transportation To Work (2010)

Drive to Work Alone	88	84.7%	813	85.2%	2,203	85.6%
Drive to Work in Carpool	8	8.1%	70	7.4%	202	7.8%
Travel to Work by Public Transportation	1	0.5%	4	0.4%	13	0.5%
Drive to Work on Motorcycle	-	-	-	-	-	-
Walk or Bicycle to Work	2	2.2%	25	2.7%	62	2.4%
Other Means	1	0.6%	8	0.9%	17	0.6%
Work at Home	4	3.9%	33	3.4%	77	3.0%

Travel Time (2010)

Travel to Work in 14 Minutes or Less	22	21.6%	186	20.2%	547	21.9%
Travel to Work in 15 to 29 Minutes	35	34.6%	353	38.3%	985	39.5%
Travel to Work in 30 to 59 Minutes	37	37.2%	326	35.3%	810	32.5%
Travel to Work in 60 Minutes or More	7	6.6%	56	6.1%	153	6.1%
Average Minutes Travel to Work	26.1		25.2		24.2	

This report was produced using data from private and government sources deemed to be reliable. The information herein is provided without representation or warranty.