



ALPHA  
EQUITY  
REALTY & MANAGEMENT

# SPACE AVAILABLE FOR LEASE



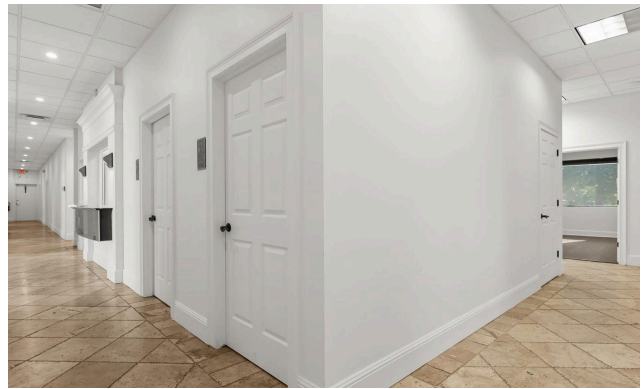
201 Specialty Point,  
Sanford, FL 32771

Pricing:

**\$16 /SF NNN**  
**4.03 CAM**

## PROPERTY HIGHLIGHTS:

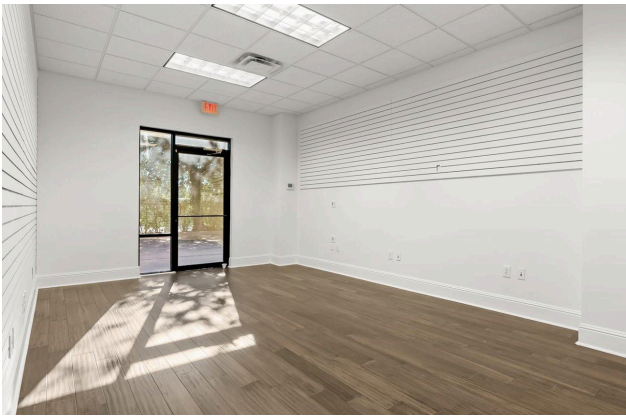
- α ±5,961 SF single-tenant commercial building
- α Office Features: 9 private offices, conference room, break room, command center, 3 toilets, 1 shower
- α 2K+ SF Warehouse: 18' clear & two 16' grade-level doors
- α Premium Finishes: Travertine tile floors, sleek lighting, modern touches
- α 19 Parking Spaces + EV Charging Station
- α Plug-and-play



Mac Jaffer, CCIM: [516-554-5775](tel:516-554-5775)  
Tati K: [407-668-8534](tel:407-668-8534)  
[leasing@recfl.com](mailto:leasing@recfl.com)

201 Specialty Point, Sanford,  
FL 32771

Alpha Equity does not represent or warranty the accuracy of the information contained herein. Such information has been given to Alpha Equity by the owner of the property or obtained from other sources deemed reliable. Alpha Equity has no reason to doubt its accuracy, but does not guarantee it. The reviewers(s) of this document is encouraged to perform their own research for their own purposes to verify the dependability of the information being reviewed. All information should be verified by reviewer(s) prior to purchase or lease. Unless otherwise noted, the property is being offered as-is, where is, with all faults.



Mac Jaffer, CCIM: [516-554-5775](tel:516-554-5775)  
Tati K: [407-668-8534](tel:407-668-8534)  
[leasing@recfl.com](mailto:leasing@recfl.com)

201 Specialty Point, Sanford,  
FL 32771

Alpha Equity does not represent or warranty the accuracy of the information contained herein. Such information has been given to Alpha Equity by the owner of the property or obtained from other sources deemed reliable. Alpha Equity has no reason to doubt its accuracy, but does not guarantee it. The reviewers(s) of this document is encouraged to perform their own research for their own purposes to verify the dependability of the information being reviewed. All information should be verified by reviewer(s) prior to purchase or lease. Unless otherwise noted, the property is being offered as-is, where is, with all faults.



Virtual Tour

<https://my.matterport.com/show/?m=FcqQzgHGT3n>



Watch Video

Mac Jaffer: 516-554-5775  
Tati K: 407-668-8534  
[leasing@alphaacq.com](mailto:leasing@alphaacq.com)

201 Specialty Point, Sanford,  
FL 32771

Alpha Equity does not represent or warranty the accuracy of the information contained herein. Such information has been given to Alpha Equity by the owner of the property or obtained from other sources deemed reliable. Alpha Equity has no reason to doubt its accuracy, but does not guarantee it. The reviewers(s) of this document is encouraged to perform their own research for their own purposes to verify the dependability of the information being reviewed. All information should be verified by reviewer(s) prior to purchase or lease. Unless otherwise noted, the property is being offered as-is, where is, with all faults.



# **201 Specialty Point, Sanford, FL 32771**



**Alpha Equity Realty & Management**  
**1525 International Parkway,**  
**Unit #4071, Lake Mary FL 32746**  
**[www.recfl.com](http://www.recfl.com)**



**MAC JAFFER**  
**516-554-5775**

**TATI K**  
**407-668-8534**

**[leasing@alphaacq.com](mailto:leasing@alphaacq.com)**