



**RETAIL SPACE FOR *SUBLEASE***

# **HARRELL SQUARE**

**2000 SAM RITTENBERG BLVD, CHARLESTON SC 29407**

CONVENIENTLY  
LOCATED IN  
WEST ASHLEY

QUICK ACCESS TO  
DOWNTOWN AND  
NORTH CHARLESTON

ONSITE FOOD AND  
PROFESSIONAL  
SERVICES

**SCHEDULE A TOUR TODAY**

---

**BOB CALDWELL, SIOR** [BOB@CALDWELLCOMMERCIAL.COM](mailto:BOB@CALDWELLCOMMERCIAL.COM)

843.566.1888 | [CALDWELLCOMMERCIAL.COM](http://CALDWELLCOMMERCIAL.COM)

# PROPERTY OVERVIEW

**AVAILABLE SUITE**  
SUITE 118: 1,864 SF

**SUBLEASE RATE**  
\$30 SF/YEAR (NNN)

**BUILDING SIZE**  
53,715 SF

**LOT SIZE**  
2.88 ACRES

**YEAR BUILT**  
1985

**YEAR RENOVATED**  
2004

**MARKET**  
CHARLESTON

**TRAFFIC COUNT**  
27,700

**SUBMARKET**  
11 - WEST ASHLEY INSIDE 1-526 TO ASHLEY RIVER

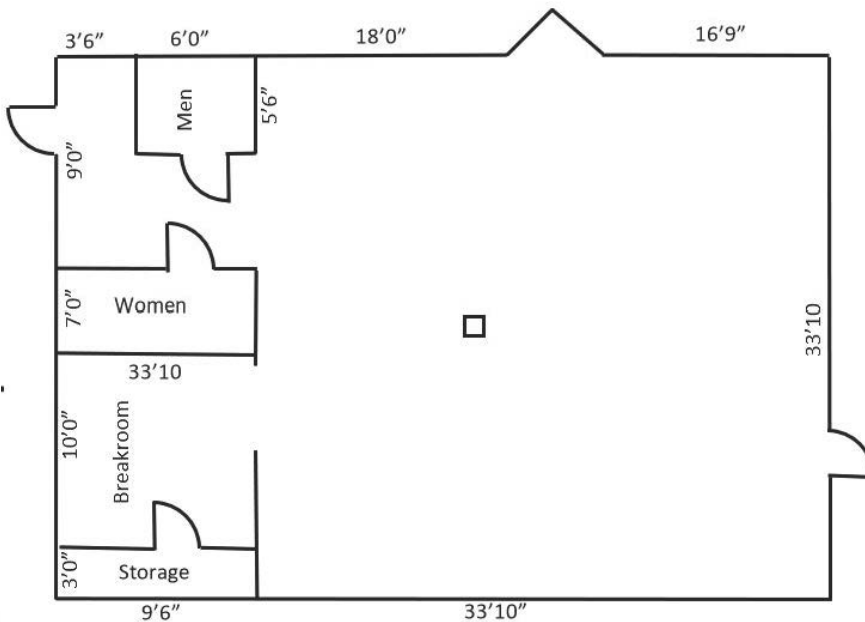
## HIGHLIGHTS

Harrell Square is a **well-known and highly visible retail location**, with a prime signage opportunity along the heavily trafficked Sam Rittenberg Boulevard.

Neighboring national retailers include Panera, FedEx, Target, Costco, PetSmart, American Red Cross, Best Buy, Planet Fitness, and Holiday Inn.

**Easily accessible** from Interstate 526, Highway 17, and Sam Rittenberg Boulevard, the major arteries throughout Charleston.

# AVAILABLE SPACE



## SUITE 118

**SUBLEASE RATE: \$30 SF/yr (NNN)**  
**SPACE SIZE: 1,864 SF**

**READY TO HEAR MORE OR SCHEDULE A TOUR? REACH OUT TO US TODAY:**

**CALDWELL COMMERCIAL REAL ESTATE SERVICES**  
4476 LEEDS PLACE WEST, SUITE A, CHARLESTON, SC 29405

**BOB CALDWELL, SIOR**  
843.566.1888 | BOB@CALDWELLCOMMERCIAL.COM