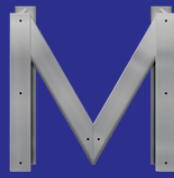


MERCER  
COMMERCIAL

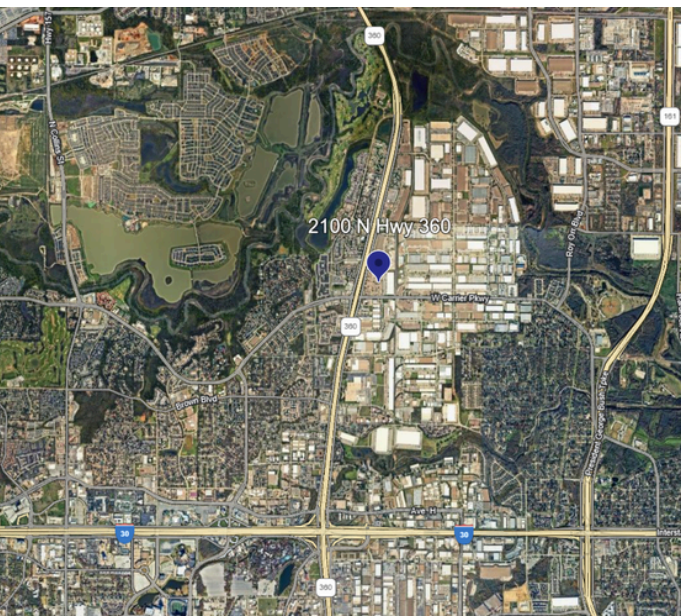


COMPANY  
REAL ESTATE

FOR LEASE

AVAILABLE: 600 SF

2100 N HWY 360 #1700B, GRAND PRAIRIE, TX 75050



## PROPERTY FEATURES

- Office SF: 600
- 2 Private Offices
- 1 Restroom

### NICK FULTON

Market Director

(469) 616-8783

nfulton@mercerc-company.com

### CORBY HODGKISS, SIOR

Executive Vice President

(469) 360-3918

chodgkiss@mercerc-company.com

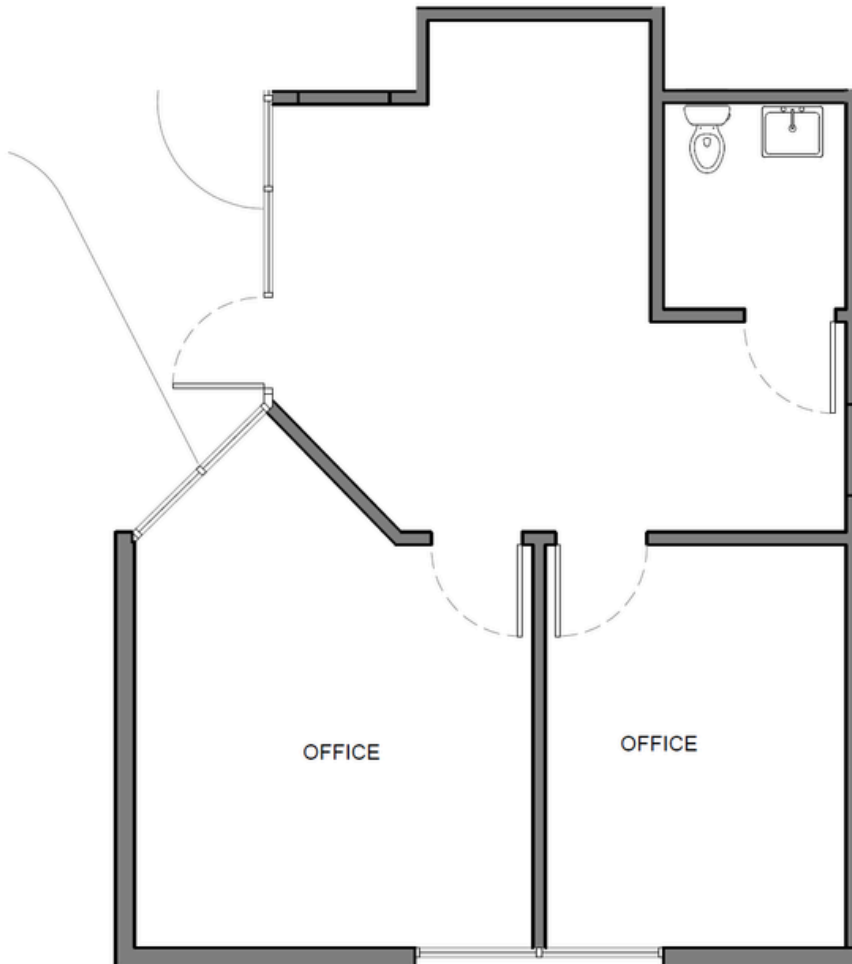
Mercer Company  
2461 N Stemmons Fwy, Dallas, TX 75207

mercerc-company.com

# AVAILABLE: 600 SF

2100 N HWY 360 #1700B, GRAND PRAIRIE, TX 75050

## FLOORPLAN



**NICK FULTON**

Market Director  
(469) 616-8783



**CORBY HODGKISS, SIOR**

Executive Vice President  
(469) 360-3918

The information contained herein has been given to us by the owner of the property or other sources we deem reliable. We have no reason to doubt its accuracy, but we do not guarantee it. All information should be verified before purchase or lease.