

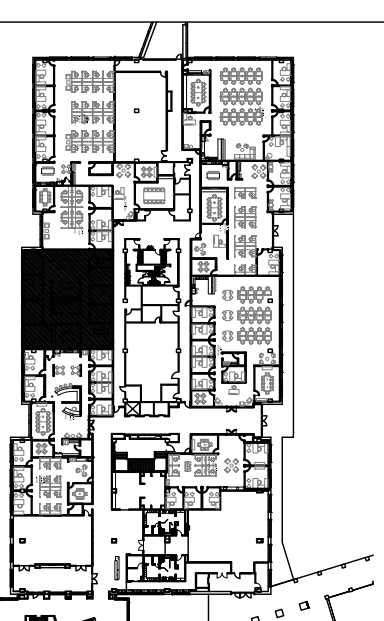
- ### LEGEND
- ══ NEW PARTITION
 - EXISTING PARTITION
 - == DEMOLISHED ITEM
 - ▬ DEMISING WALL WITH SOUND INSULATION
 - OFFICE ROOM NAME
 - 01 ROOM NUMBER

CODE INFORMATION

SPRINKLERED:	YES
OCCUPANT LOAD	
BUSINESS ASSEMBLY	3,230 SF 150 29
REQUIRED # OF EXITS:	1
ACTUAL # OF EXITS:	2
MAX COMMON PATH OF EGRESS:	100'
ACTUAL COMMON PATH OF EGRESS:	16'-8"

APPLICABLE CODES

BUILDING CODE:	2021 INTERNATIONAL BUILDING CODE WITH AMENDMENTS
FIRE/LIFE SAFETY CODE:	2021 INTERNATIONAL FIRE CODE WITH AMENDMENTS
MECHANICAL CODE:	2021 INTERNATIONAL MECHANICAL CODE WITH AMENDMENTS
PLUMBING CODE:	2021 INTERNATIONAL PLUMBING CODE WITH AMENDMENTS
ELECTRICAL CODE:	2020 NATIONAL ELECTRICAL CODE WITH AMENDMENTS
ENERGY CODE:	2021 INTERNATIONAL ENERGY CONSERVATION CODE WITH AMENDMENTS
ADA GUIDELINES:	STATE OF TEXAS ACCESSIBILITY STANDARDS (TAS) AMERICANS WITH DISABILITIES ACT ACCESSIBILITY GUIDELINES (ADAAG)



PROJECT NAME AND ADDRESS
ROBINSON & HENRY
 KIRKWOOD OAKS
 3120 SABRE DRIVE
 SOUTHLAKE, TX
 76092

RSF: 3,941 +/-

1600 N. COLLINS
 SUITE 1900
 RICHARDSON, TX 75080
 TEL: 469.804.2400

DRAWN BY: MKS
 REVIEWED BY: MKS

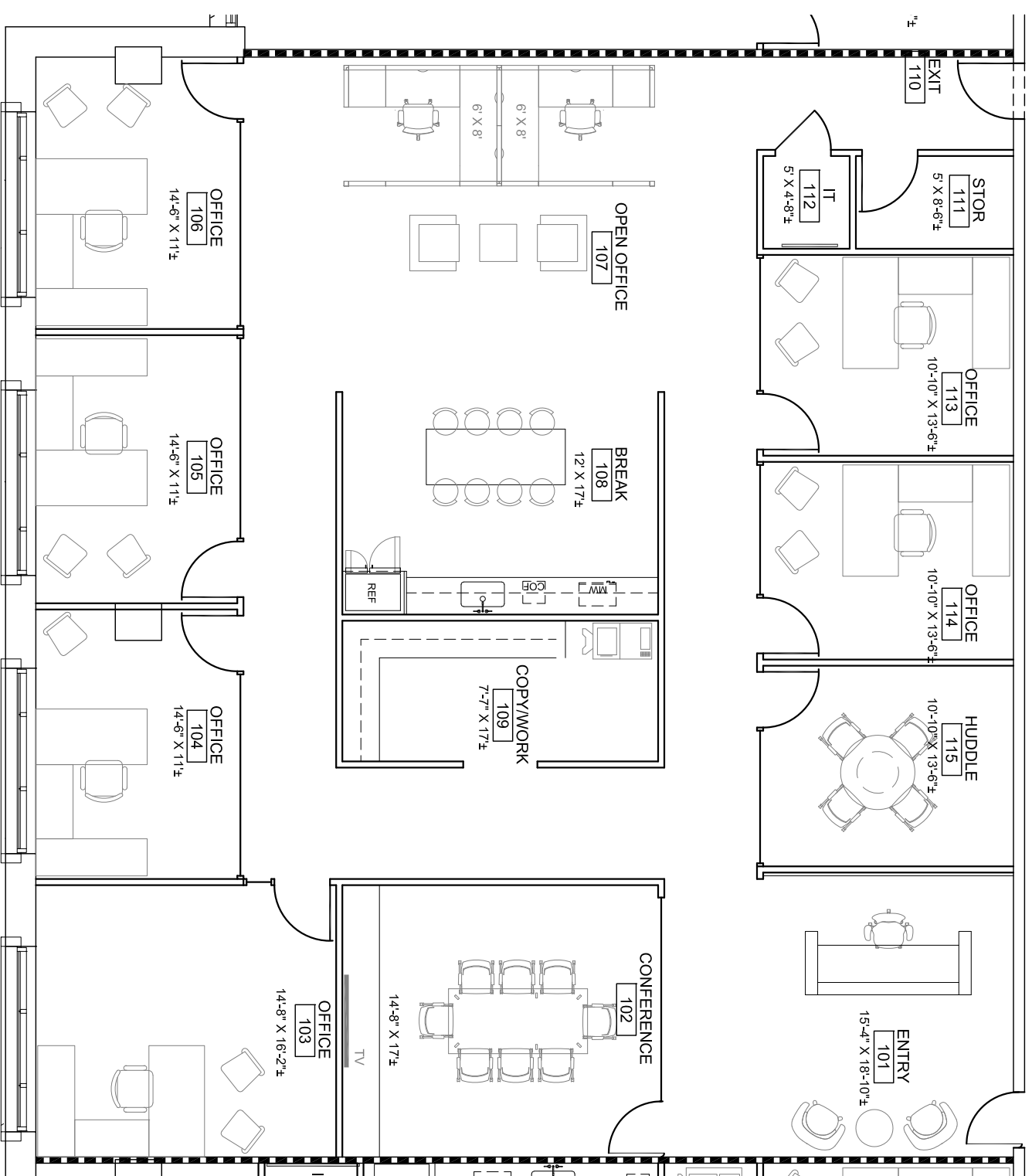
No.	Revision/Issue	Date
1.0	SPACE PLAN	10-17-22

SEA/SIGNATURE

NOT TO BE USED FOR PERMIT, CONSTRUCTION OR REGULATORY APPROVAL

SHEET NAME
SPACE PLAN

SHEET NUMBER
1.0



01 SPACE PLAN

SCALE: 1/8" = 1'-0"

02 KEY PLAN