

915 F ST NW

Washington, DC 20004



Leasing Information:
202.513.6700

Lincoln

Merrill Turnbull	Adam Biberaj	Tim Whitebread	McKay Elliott
202.513.6713	202.513.6736	202.513.6712	202.513.6724
mturnbull@lpc.com	abiberaj@lpc.com	twhitebread@lpc.com	melliott@lpc.com

101 Constitution Avenue NW
Suite 325 East
Washington, DC 20001

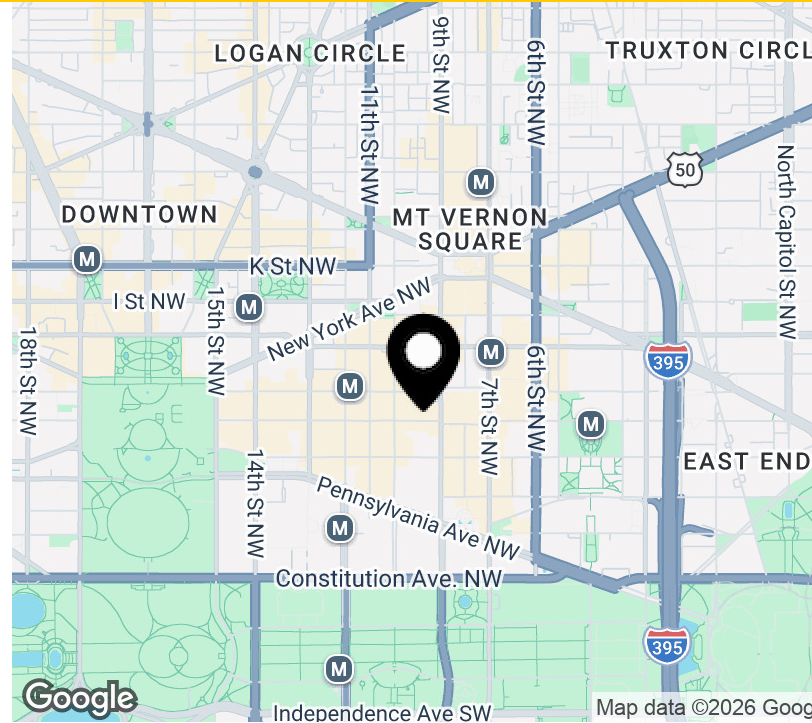
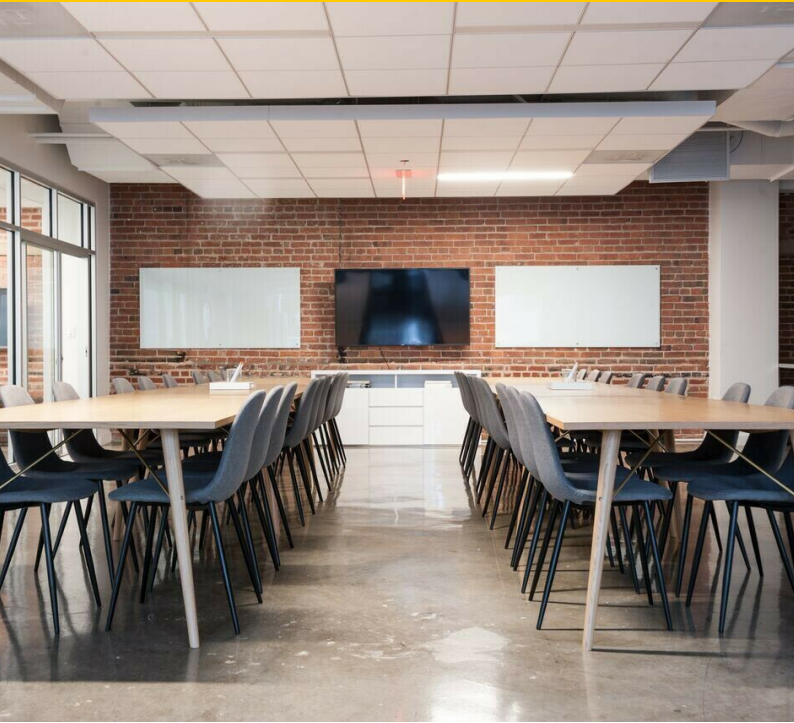
www.lpc.com

915 F ST NW

Washington, DC 20004

Office For Lease

1,575 - 1,635 SF



Property Highlights

- Prime office space available at 915 F Street NW, seamlessly blending historic charm with modern functionality.
- Conveniently located just two blocks from Metro Center, providing access to multiple Metro lines.
- Surrounded by an array of restaurants, retail shops, and cultural attractions, offering unparalleled convenience.
- Situated in the heart of the vibrant Penn Quarter neighborhood, this prestigious address places you in a thriving commercial hub.

Availabilities

Availabilities	SF	Lease Rate	Date Available
5th Floor	1,576 SF	Negotiable	Immediately
6th Floor	1,635 SF	Negotiable	Immediately
7th Floor	1,575 SF	Negotiable	Immediately

Merrill Turnbull

202.513.6713
mturnbull@lpc.com

Adam Biberaj

202.513.6736
abiberaj@lpc.com

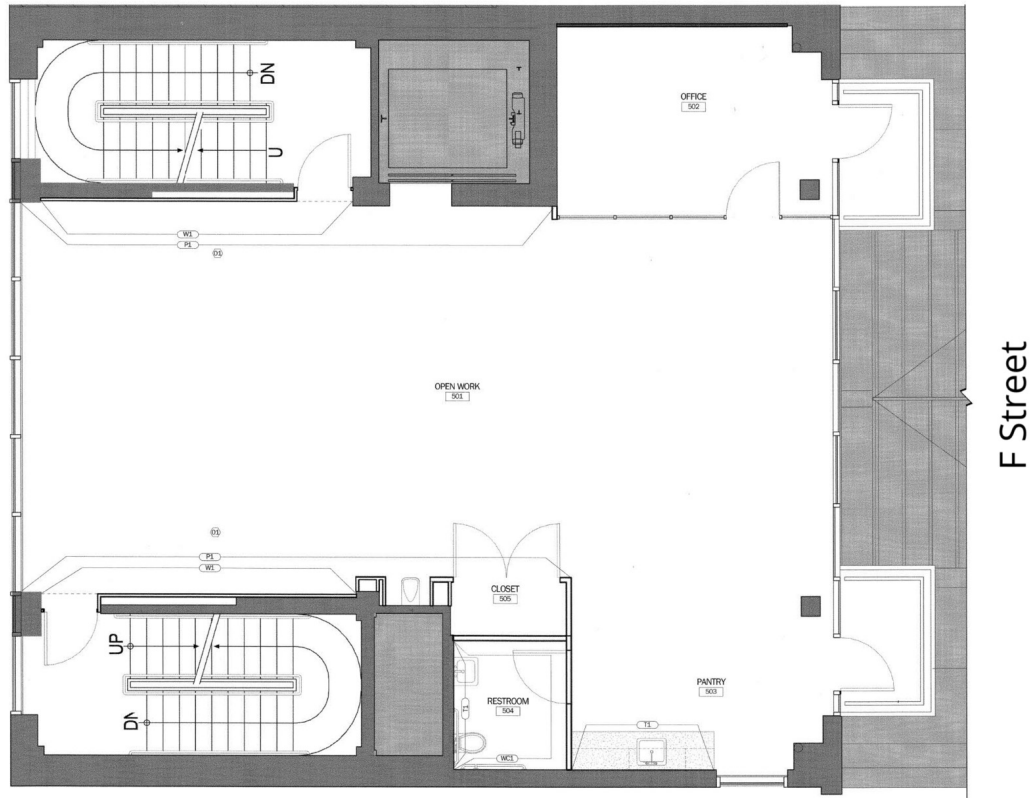
Tim Whitebread

202.513.6712
twhitebread@lpc.com

McKay Elliott

202.513.6724
melliott@lpc.com

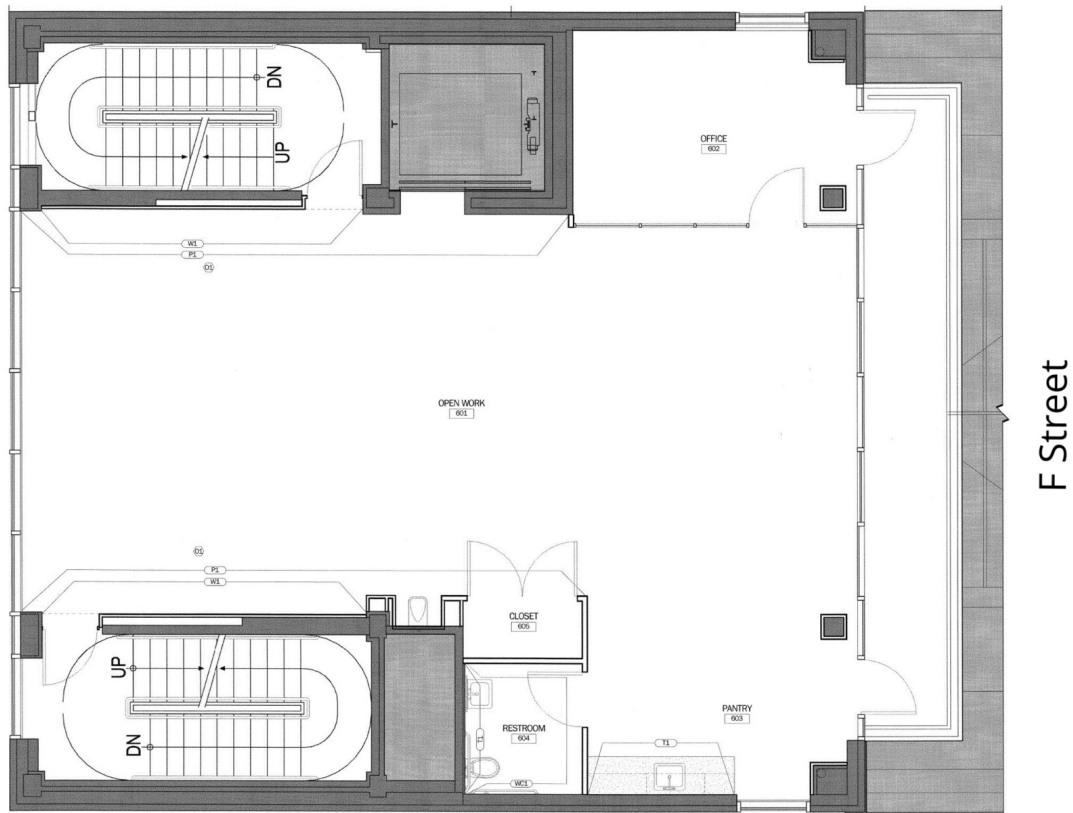
Lincoln



Suite	Size	Description
5th Floor	1,576 SF	Ready-to-go suite available immediately.

Merrill Turnbull 202.513.6713 mturnbull@lpc.com	Adam Biberaj 202.513.6736 abiberaj@lpc.com	Tim Whitebread 202.513.6712 twhitebread@lpc.com	McKay Elliott 202.513.6724 melliott@lpc.com
--	---	--	--

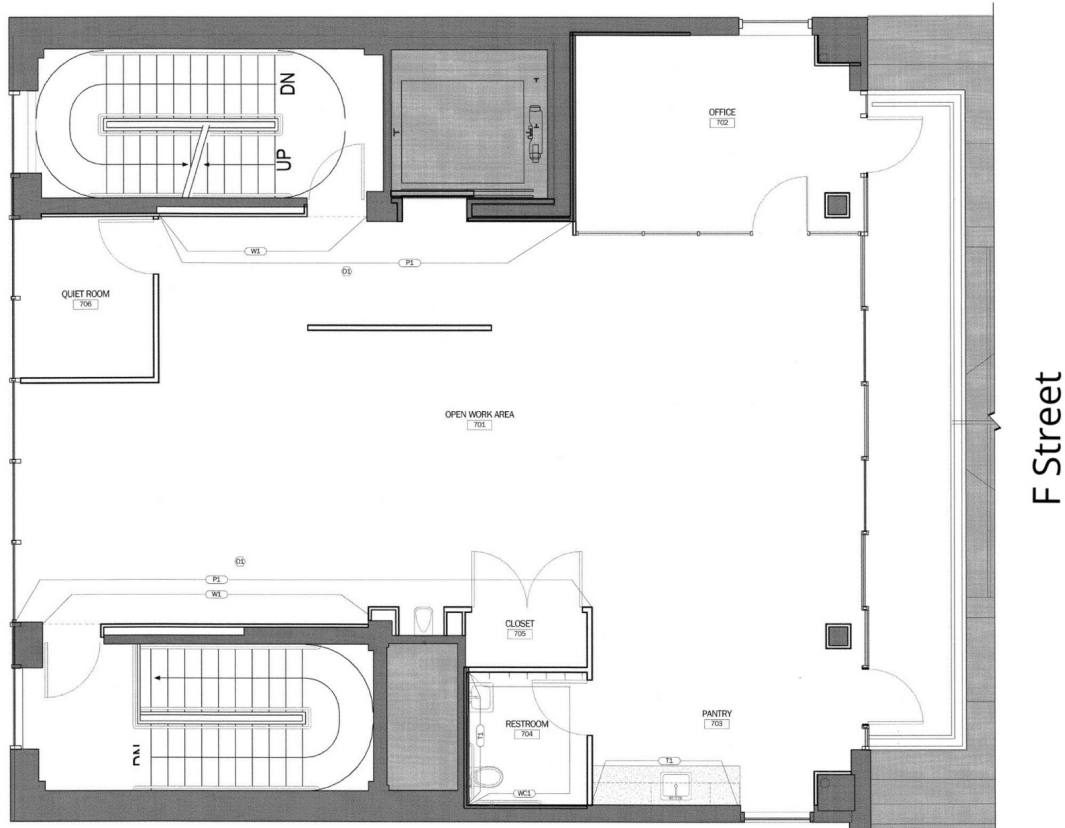
Lincoln



Suite	Size	Description
6th Floor	1,635 SF	Ready-to-go suite available immediately.

Merrill Turnbull 202.513.6713 mturnbull@lpc.com	Adam Biberaj 202.513.6736 abiberaj@lpc.com	Tim Whitebread 202.513.6712 twhitebread@lpc.com	McKay Elliott 202.513.6724 melliott@lpc.com
--	---	--	--

Lincoln



Suite	Size	Description
7th Floor	1,575 SF	Ready-to-go suite available immediately.

Merrill Turnbull 202.513.6713 mturnbull@lpc.com	Adam Biberaj 202.513.6736 abiberaj@lpc.com	Tim Whitebread 202.513.6712 twhitebread@lpc.com	McKay Elliott 202.513.6724 melliott@lpc.com
--	---	--	--

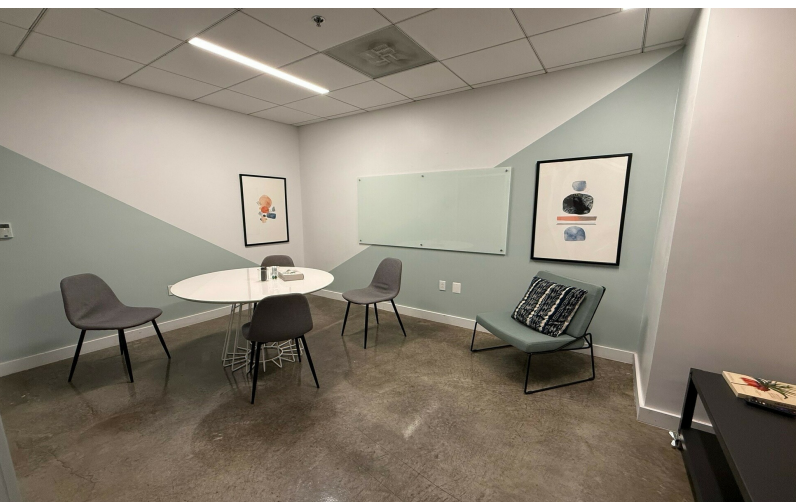
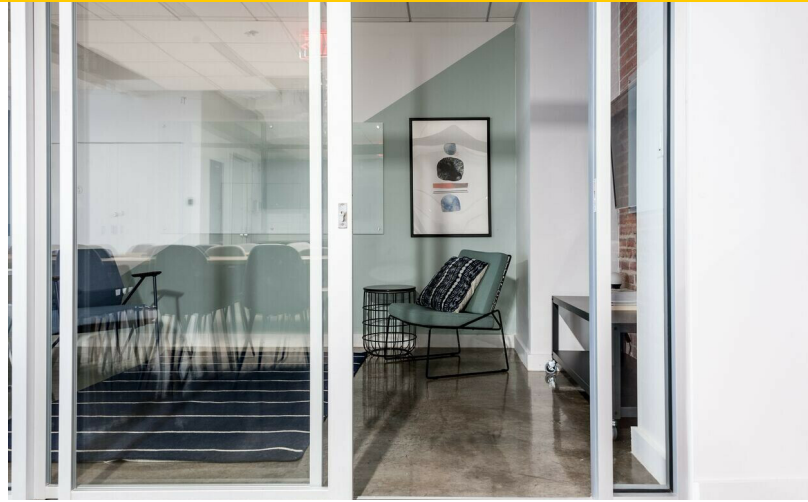
Lincoln

915 F ST NW

Washington, DC 20004

Property Photos

1,575 - 1,635 SF



Merrill Turnbull

202.513.6713
mturnbull@lpc.com

Adam Biberaj

202.513.6736
abiberaj@lpc.com

Tim Whitebread

202.513.6712
twhitebread@lpc.com

McKay Elliott

202.513.6724
melliott@lpc.com

Lincoln



915 F ST NW

Washington, DC 20004

Leasing Information:
202.513.6700

Merrill Turnbull
202.513.6713
mturnbull@lpc.com

Adam Biberaj
202.513.6736
abiberaj@lpc.com

Tim Whitebread
202.513.6712
twhitebread@lpc.com

McKay Elliott
202.513.6724
melliott@lpc.com

Lincoln

101 Constitution Avenue NW
Suite 325 East
Washington, DC 20001

www.lpc.com