

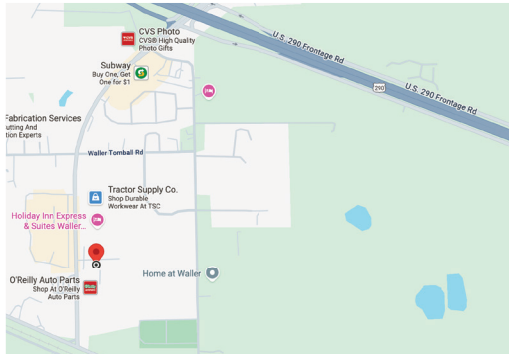


BLDG 1006
SUITE 2
1006 PRIYA LANE
WALLER, TX

OFFICE / RETAIL SPACE



NOW LEASING

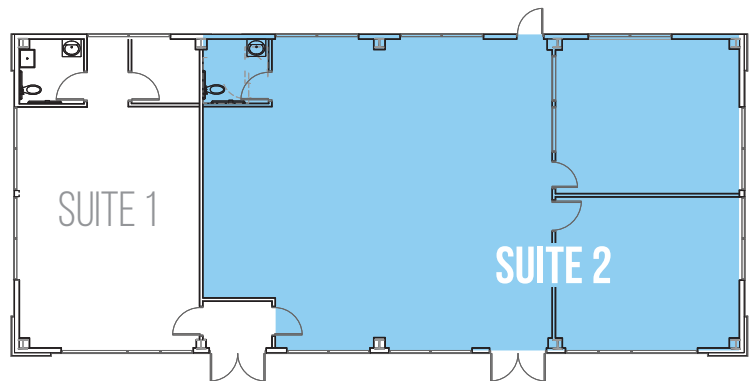


LEASE INFORMATION

TYPE: NNN

TERM: 36 MONTHS MIN.

DISCLAIMER: THESE NUMBERS REFLECT WHAT IS CURRENTLY AVAILABLE FOR LEASE AND DO NOT DESCRIBE THE TOTAL SQUARE FOOTAGE.



PROPERTY HIGHLIGHTS

+/- 2,061 SQ. FT.

OPEN LAYOUT TO MEET YOUR BUSINESS NEEDS

2 PRIVATE EXECUTIVE OFFICES

AMPLE NATURAL LIGHT

FLOOR TO CEILING WINDOWS

MOVE IN READY

CONTACT US IF YOU HAVE ANY QUESTIONS OR TO SCHEDULE A TOUR

 **936-256-2355**