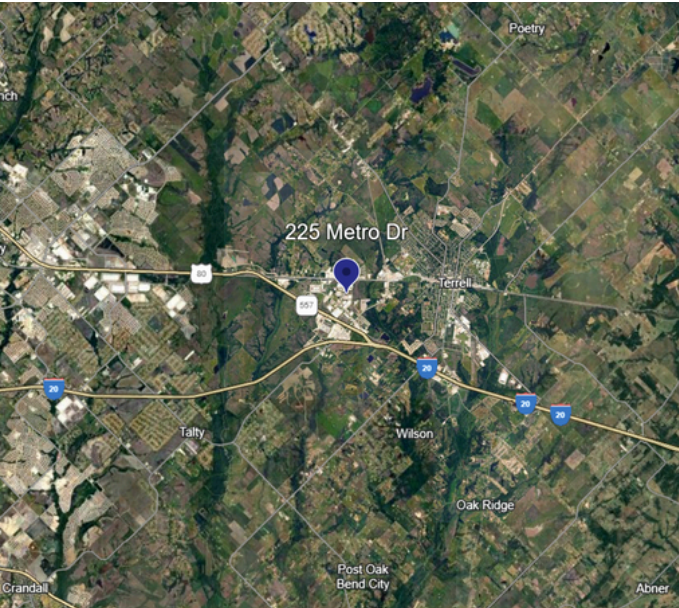


FOR LEASE

AVAILABLE: 30,525 SF

225 METRO DRIVE, SUITE 300 D, TERRELL, TX 75160



**NIKO PADILLA**

Market Director

(214) 226-3381

[npadilla@mercerc-company.com](mailto:npadilla@mercerc-company.com)

**PROPERTY FEATURES**

- Available SF: 30,525
- Office SF: 655
- 20' Clear Height
- 19 Grade Level Doors
- 3 Phase Power
- 40 Parking Spaces

**WILLIAM LEMASTERS, SIOR**

Vice President

(214) 998-8076

[wlemasters@mercerc-company.com](mailto:wlemasters@mercerc-company.com)

# AVAILABLE: 30,525 SF

225 METRO DRIVE, SUITE 300 D, TERRELL, TX 75160



## NIKO PADILLA

Market Director

(214) 226-3381

[npadilla@mercercorpany.com](mailto:npadilla@mercercorpany.com)

## WILLIAM LEMASTERS, SIOR

Vice President

(214) 998-8076

[wlemasters@mercercorpany.com](mailto:wlemasters@mercercorpany.com)

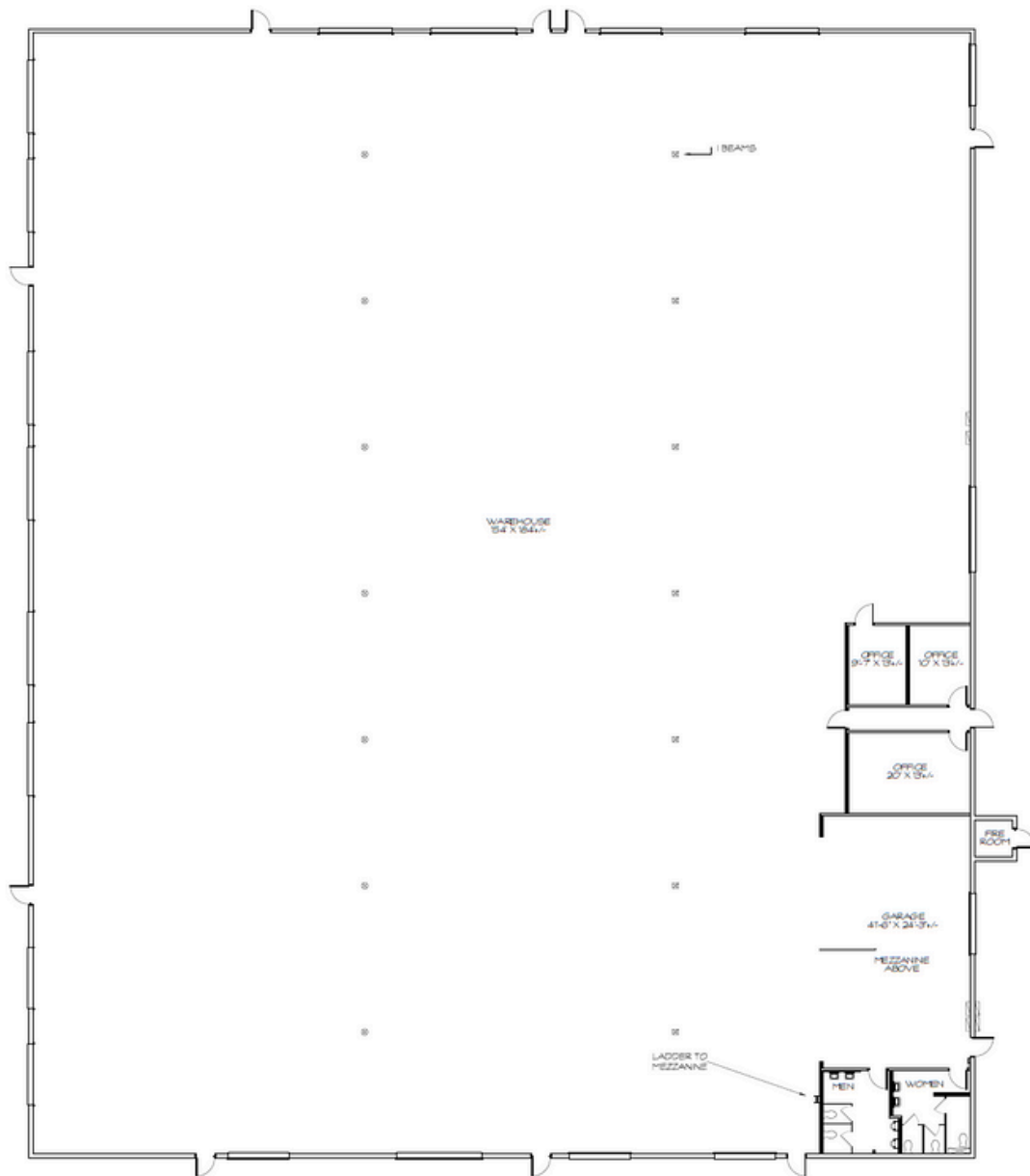
The information contained herein has been given to us by the owner of the property or other sources we deem reliable. We have no reason to doubt its accuracy, but we do not guarantee it. All information should be verified before purchase or lease.

Mercer Company  
2461 N Stemmons Fwy, Dallas, TX 75207

[mercercorpany.com](http://mercercorpany.com)

# AVAILABLE: 30,525 SF

225 METRO DRIVE, SUITE 300 D, TERRELL, TX 75160



## NIKO PADILLA

Market Director

(214) 226-3381

[npadilla@mercero-company.com](mailto:npadilla@mercero-company.com)

## WILLIAM LEMASTERS, SIOR

Vice President

(214) 998-8076

[wlemasters@mercero-company.com](mailto:wlemasters@mercero-company.com)

The information contained herein has been given to us by the owner of the property or other sources we deem reliable. We have no reason to doubt its accuracy, but we do not guarantee it. All information should be verified before purchase or lease.