



WILLIAM | WRIGHT

THE
GRAND
PROFESSIONAL CENTRE
ON KING GEORGE

FOR SALE
RETAIL SPACES



THE SHOPS

William Wright Commercial is pleased to present the release of The Grand Shops for sale. These brand new retail units presents a compelling opportunity for top-tier owners to occupy a high profile location in a highly desirable area. The location is within Surrey City Centre and walking distance of Skytrain. The limited supply of high quality units available in the immediate area with proximity to numerous existing services makes this a highly desirable and unique opportunity with significant long-term gains for high quality ownership.

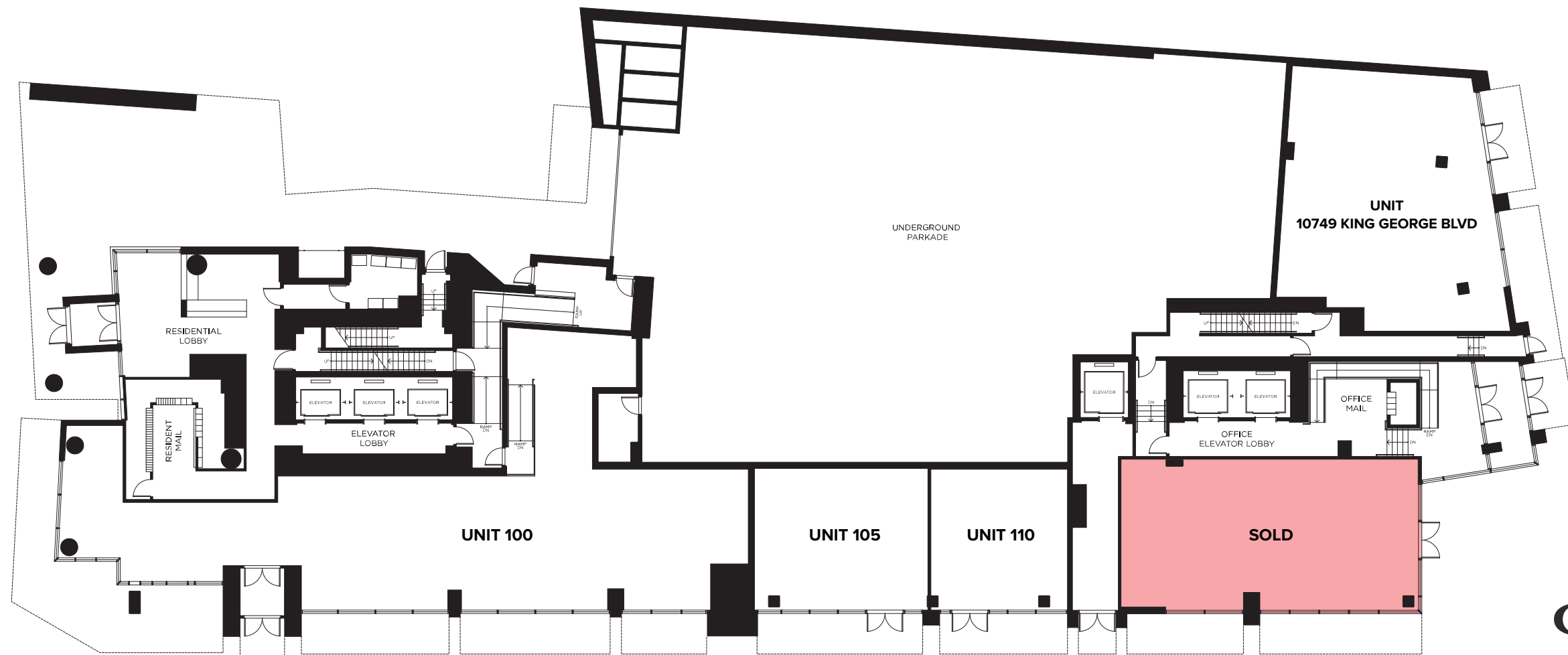


10749 KING GEORGE BLVD & 13575 107A AVENUE, SURREY

RETAIL – LEVEL ONE

UNIT	SIZE (SF)	SALE PRICE
100	3,218	\$4,505,200
105	792	\$1,168,200
110	625	\$921,875
10749 King George Blvd	1,668	\$2,335,200

COMMERCIAL LEVEL ONE



PRICING STRUCTURE

THE
GRAND
PROFESSIONAL CENTRE
ON KING GEORGE



TRANSIT

- 1 Gateway Station
- 2 Surrey Central Station
- 3 King George Station

Future SkyTrain to Langley

EDUCATION

- 1 Douglas College, Surrey Training Centre
- 2 Kwantlen Polytechnic
- 3 Kwantlen Park Secondary School
- 4 K.B. Woodward Elementary
- 5 Stenberg College
- 6 Simon Fraser University Surrey Campus
- 7 Sprott Shaw College Surrey

CITY SERVICES

- 1 Surrey Civic Plaza
- 2 Surrey City Hall
- 3 Surrey Libraries City Centre Branch

RECREATION/PARKS

- 1 Planet Fitness
- 2 Chuck Bailey Recreation Centre
- 3 Whalley Athletic Park
- 4 Forsyth Park
- 5 Royal Kwantlen Park
- 6 Hawthorne Rotary Park
- 7 Holland Park
- 8 Green Timbers Park

SHOPPING

- 1 Shoppers Drug Mart
- 2 Nesters Market
- 3 Safeway Surrey Central
- 4 London Drugs
- 5 Save-On-Foods
- 6 Canadian Tire
- 7 Staples
- 8 Best Buy
- 9 Central City Shopping Centre

FINANCIAL SERVICES

- 1 TD Canada Trust
- 2 RBC Royal Bank
- 3 CIBC Bank
- 4 Coast Capital Credit Union

HEALTHCARE

- 1 Health & Technology District
- 2 Surrey Memorial Hospital

FOR MORE INFORMATION CONTACT

STEPHEN GAMMER, CCIM

PERSONAL REAL ESTATE CORPORATION

stephen.gammer@williamwright.ca

604.546.5555

CHRIS VAN VLIET

PERSONAL REAL ESTATE CORPORATION

chris@williamwright.ca

604.546.5555

williamwright.ca



Vancouver Office

1340-605 Robson St
Vancouver, BC
604.428.5255

Tri-Cities Office

370-2755 Lougheed Hwy
Port Coquitlam, BC
604.545.0636

Fraser Valley Office

180-8621 201 St
Langley, BC
604.546.5555

Victoria Office

843 Johnson St
Victoria, BC
250.590.5797

Central Island Office

100B-154 Memorial Ave
Parksville, BC
250.586.1226

Kelowna Office

205-478 Bernard Ave
Kelowna, BC
236.420.3558

Kamloops Office

406-121 5th Ave
Kamloops, BC
236.425.1617