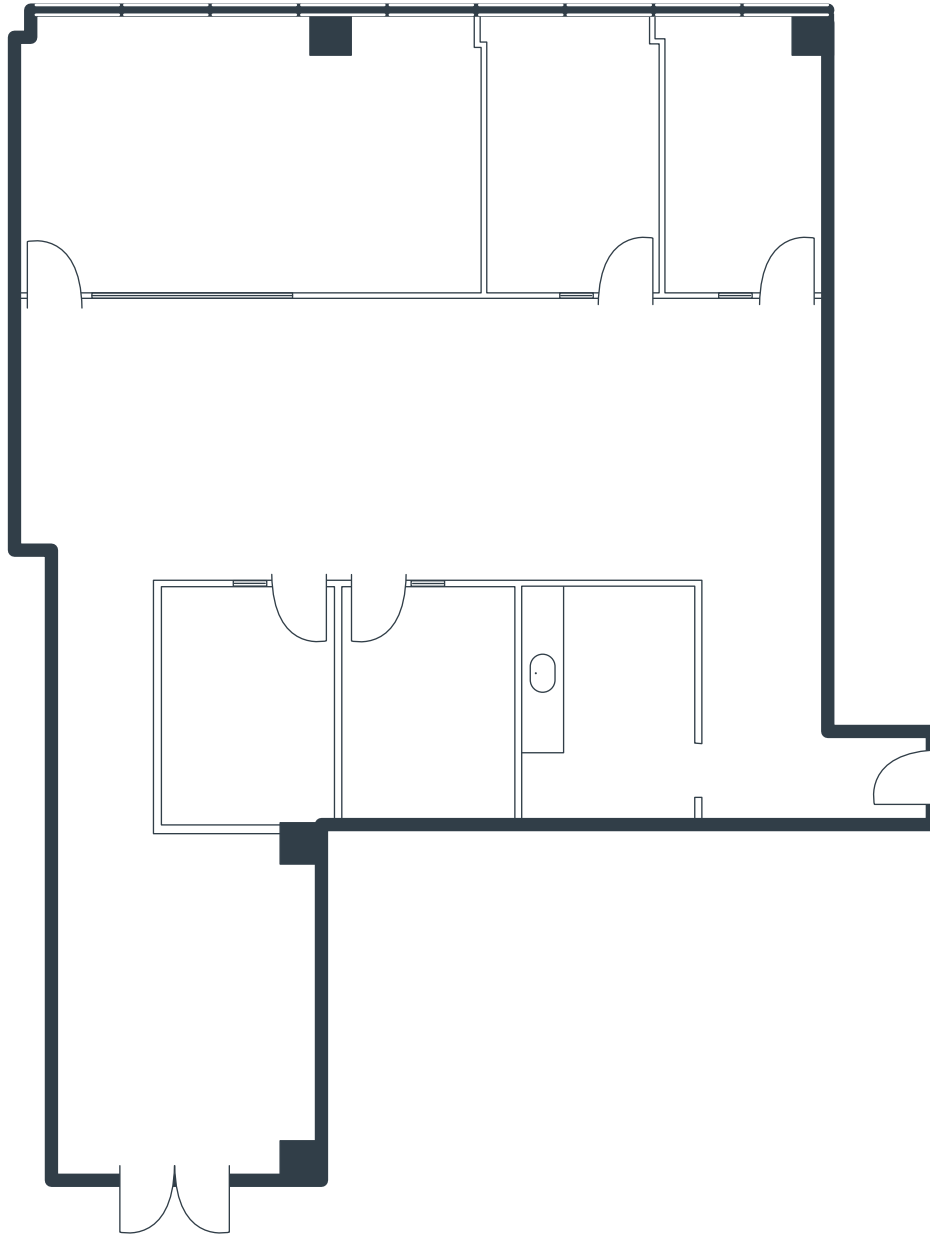


4100 NEWPORT PLACE

4100 Newport Place Drive, Suite 785
Newport Beach, CA

2,873 Square Feet
Call for Pricing
Full Service Gross



NOTES

- Reception
- 2 Window Offices
- 2 Interior Offices
- Conference Room
- Kitchen
- Large Open Work Area
- Part of a Professionally Managed Business Park

Created by Olen Commercial Realty Corp., 2022.
Information is not to be published or copied without
written approval. Square footage and floor plans are
estimates and should be separately verified. All rates,
terms, floor plans, and building facts are subject to
change without notice.

ea 01.12.2023

LAURA PRESTON-FAYERMAN

Senior Leasing Director
949.719.7205
lfayerman@olen.com



Seven Corporate Plaza
Newport Beach, CA
949.644.6536
www.olen.com