

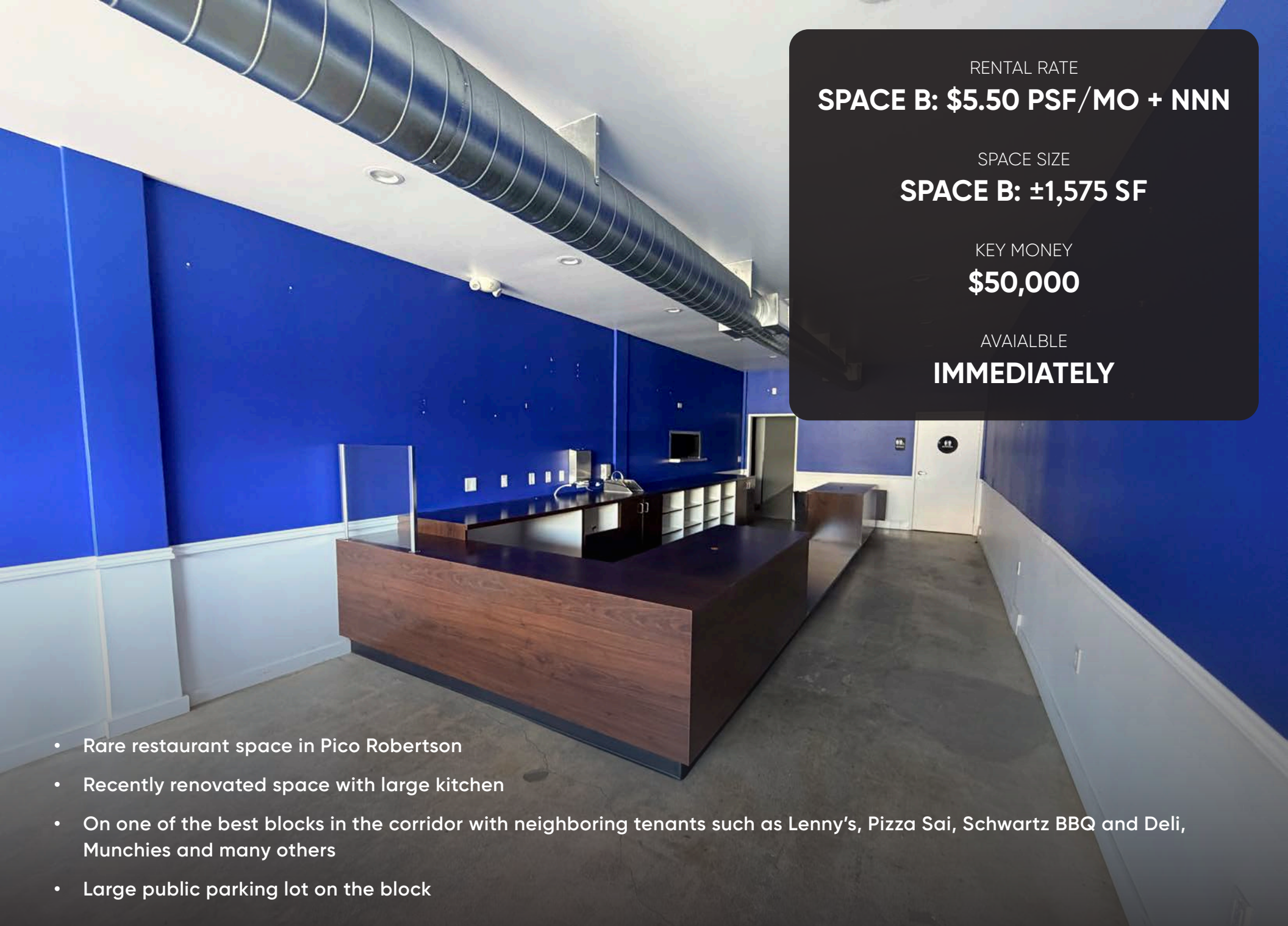


COMMERCIAL  
ASSET GROUP



# FULLY BUILT OUT RESTAURANT SPACE(S) ON PICO ROBERTSON CORRIDOR

8914 W. PICO BLVD, LOS ANGELES, CA 90035



RENTAL RATE

**SPACE B: \$5.50 PSF/MO + NNN**

SPACE SIZE

**SPACE B: ±1,575 SF**

KEY MONEY

**\$50,000**

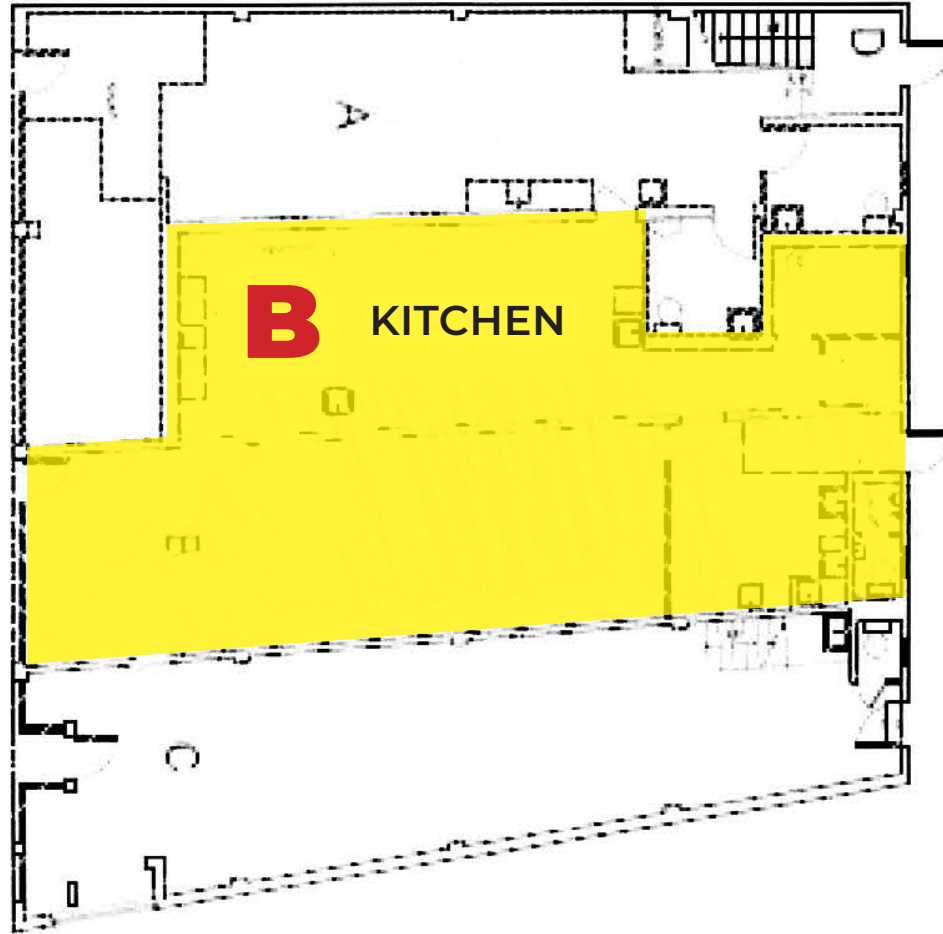
AVAILABLE

**IMMEDIATELY**

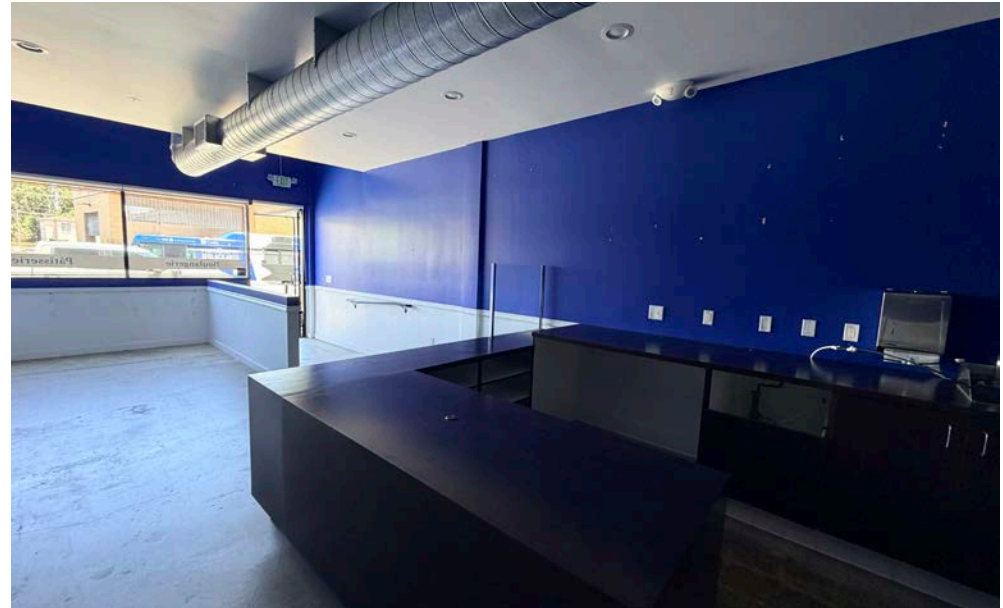
- Rare restaurant space in Pico Robertson
- Recently renovated space with large kitchen
- On one of the best blocks in the corridor with neighboring tenants such as Lenny's, Pizza Sai, Schwartz BBQ and Deli, Munchies and many others
- Large public parking lot on the block

8914 W. PICO BLVD, LOS ANGELES, CA 90035

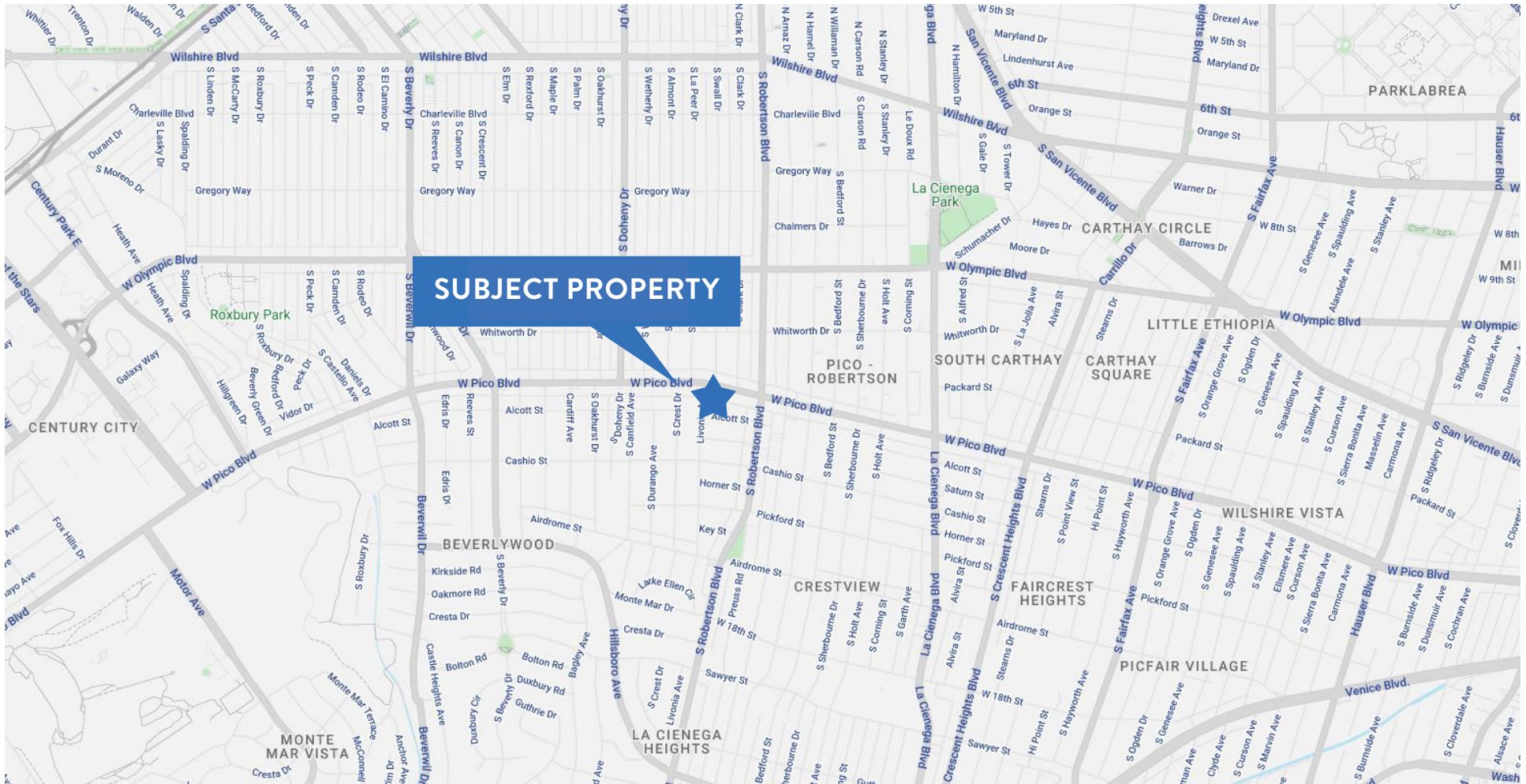
# SITE PLAN



# ADDITIONAL PHOTOS - SPACE B



# MAP



**SUBJECT PROPERTY**

8914 W. PICO BLVD, LOS ANGELES, CA 90035



**COMMERCIAL  
ASSET GROUP**

These materials are based on information and content provided by others, which we believe are accurate. No guarantee, warranty or representation is made by Commercial Asset Group, Inc. or its personnel. All interested parties must independently verify accuracy and completeness. As well, any projections, assumptions, opinion, or estimates are used for example only and do not represent the current or future performance of the identified property. Your tax, financial, legal and toxic substance advisors should conduct a careful investigation of the property and its suitability for your needs, including land use limitations. The property is subject to prior lease, sale, change in price, or withdrawal from the market without notice.



**DAVID ASCHKENASY**  
EXECUTIVE VICE PRESIDENT  
310.272.7381  
DAVIDA@CAGRE.COM  
LIC. 01714442

**DAVID ICKOVICS**  
PRINCIPAL  
310.272.7380  
DJI@CAGRE.COM  
LIC. 01315424

**AIDAN NUSSBAUM**  
ASSOCIATE  
310.272.7384  
AIDAN@CAGRE.COM  
LIC. 02306324

**COMMERCIAL ASSET GROUP**  
190 N. CANON DRIVE, STE 300  
BEVERLY HILLS, CA 90210  
P: 310.275.8222 F: 310.275.8223  
CAGRE.COM LIC: 01876070