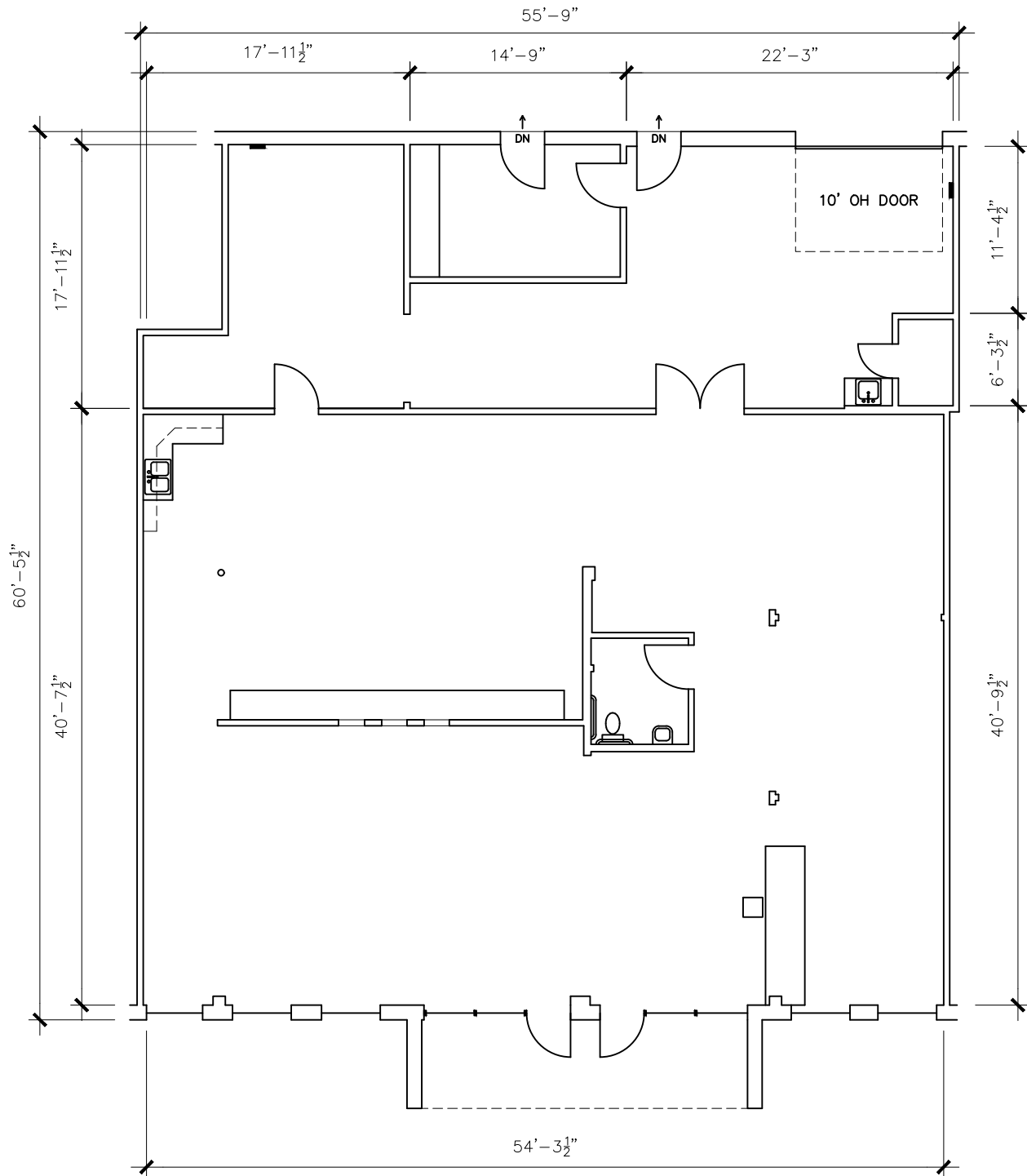
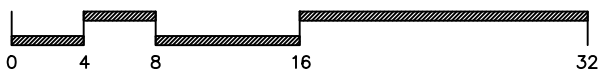


NOTE:

DIMENSIONS ARE TO SHOW ROOM SIZES.
SQUARE FOOTAGE CALCULATIONS ARE DONE
TO BOMA STANDARDS.



SCALE: 3/32" = 1'-0"



Drawing for:
TRANSWESTERN REAL ESTATE
3300 N I-35, Ste. 135
Austin, Texas 78705

SUITE 107
13581 POND SPRINGS RD.
AUSTIN, TEXAS
GROSS LEASEABLE AREA: 3,400 S.F.

THE MEASUREMENTS, FLOOR PLANS,
AND CALCULATIONS ARE ACCURATE
USING BOMA MEASUREMENT
STANDARDS FOR RETAIL BUILDINGS.
ANSI/BOMA Z65.5 - 2020
Project No.: 2486.03
Date: December 27, 2024
©2024



AUSTIN ★ TEXAS
DIMENSIONSFLOORPLANS.COM
PHONE: (512) 342-0114