

3101 TOWERCREEK PKWY SE, ATLANTA, GA 30339

ONE TOWER CREEK



CUSHMAN &
WAKEFIELD

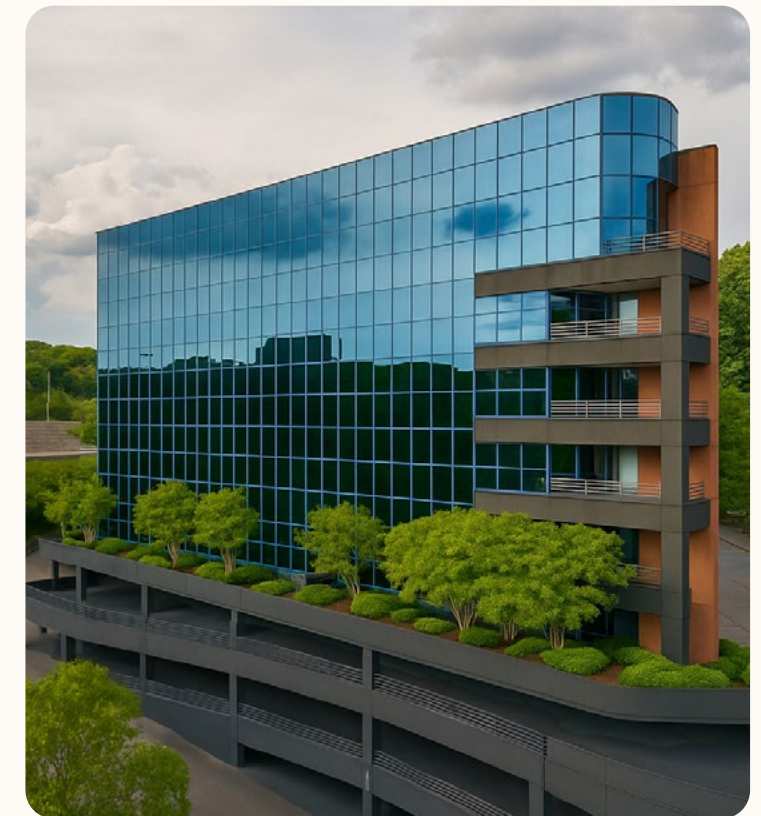
BRADEN
FELLMAN

PHOTO GALLERY

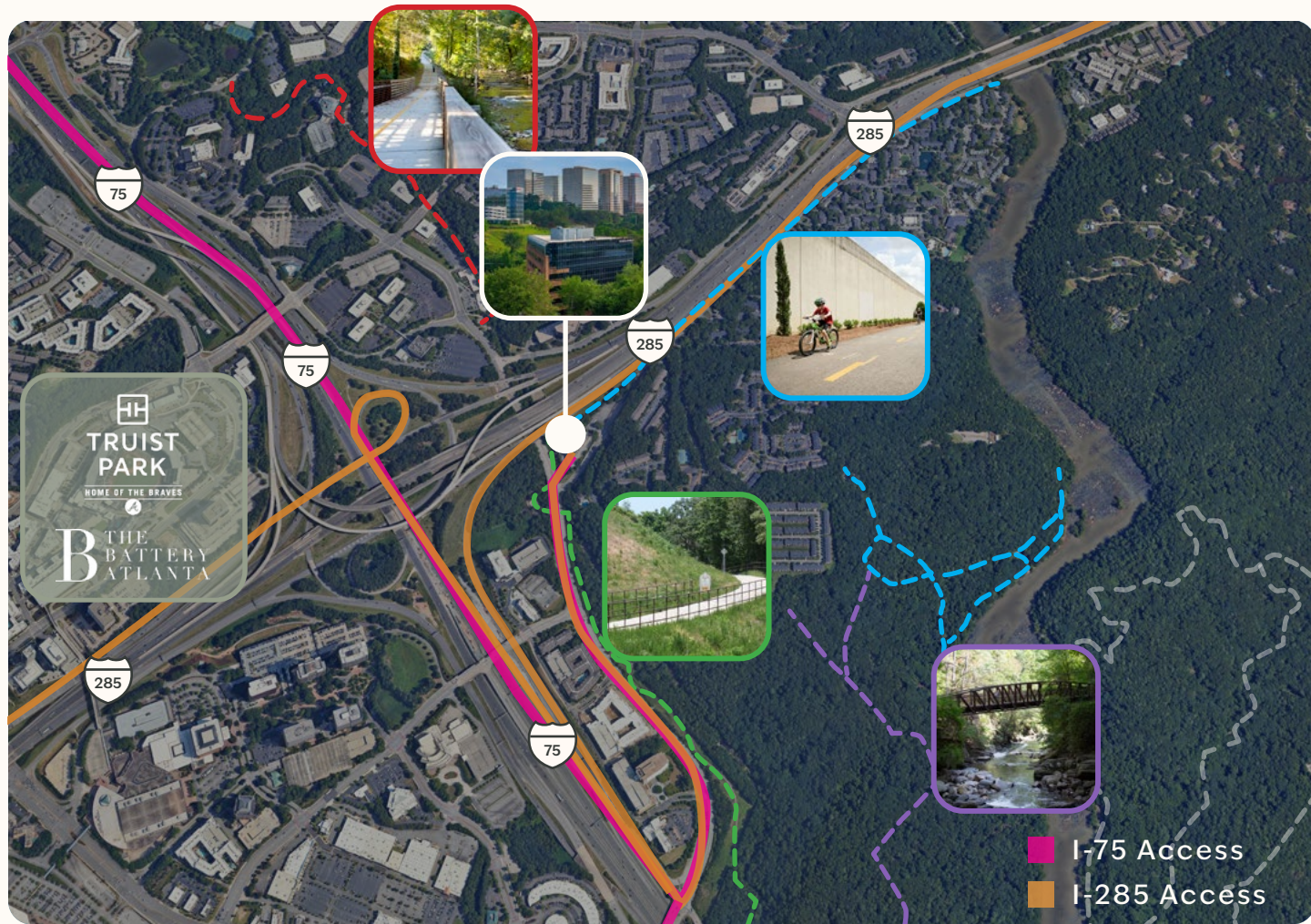


BUILDING UPDATES

To continue the interior upgrades to the property, the owners are adding a conference center with meeting rooms and a 45-person training room, as well as a fitness center with separate men's and women's locker rooms.



ALL ABOUT ACCESS



NEARBY NETWORK OF TRAILS

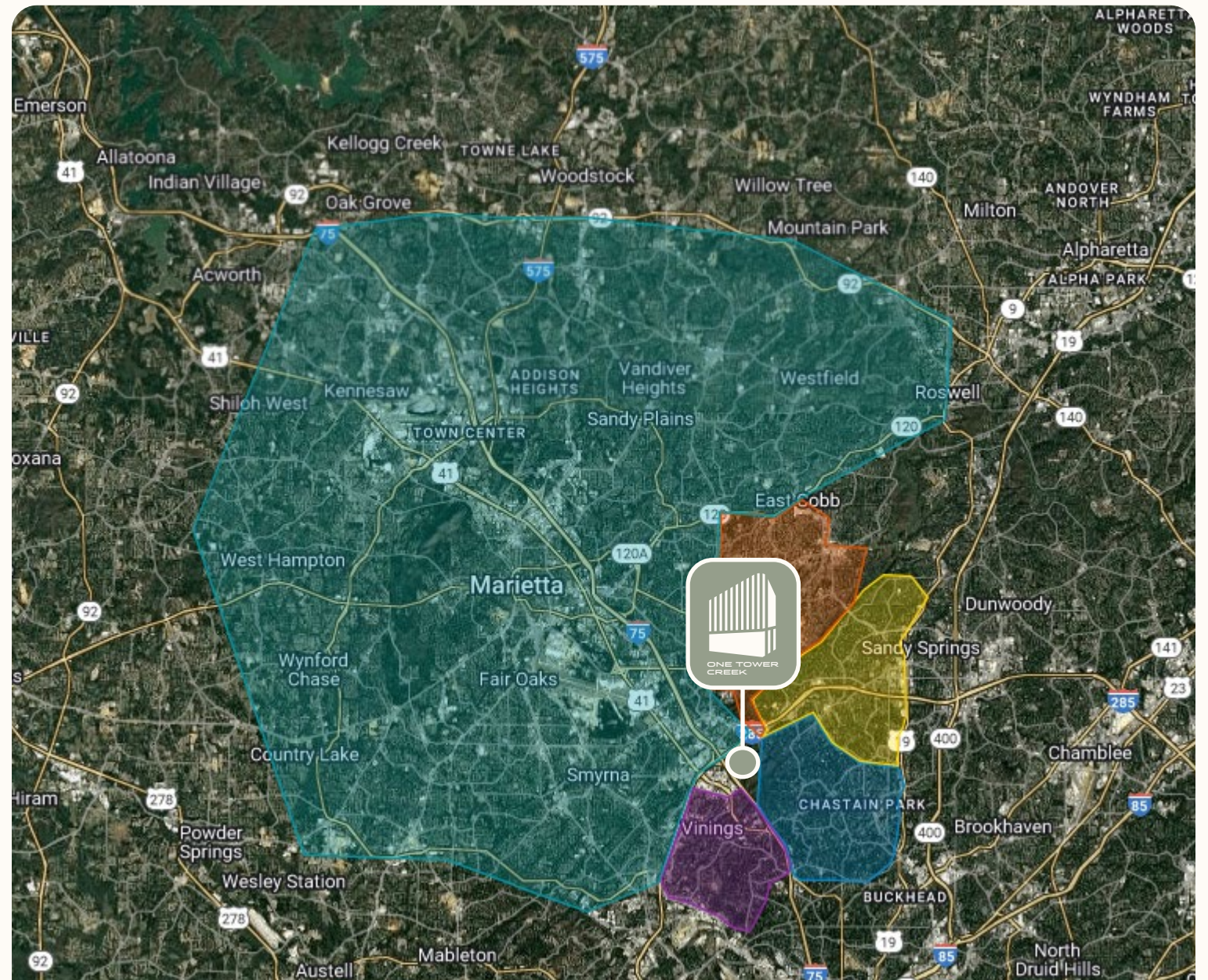
The Cumberland Trails, including the Bob Callan and Akers Mill Trails, provide direct access to the Chattahoochee River National Recreation Area, offering scenic routes for walking, biking, and nature exploration. These trails connect to the river at key points like the Cochran Shoals and Palisades West Trail. One Tower Creek is uniquely located one mile from two of the most popular access points to the Chattahoochee River, Cochran Shoals and West Palisades Park. This building offers unmatched access to one of the best trail systems in all of Atlanta.

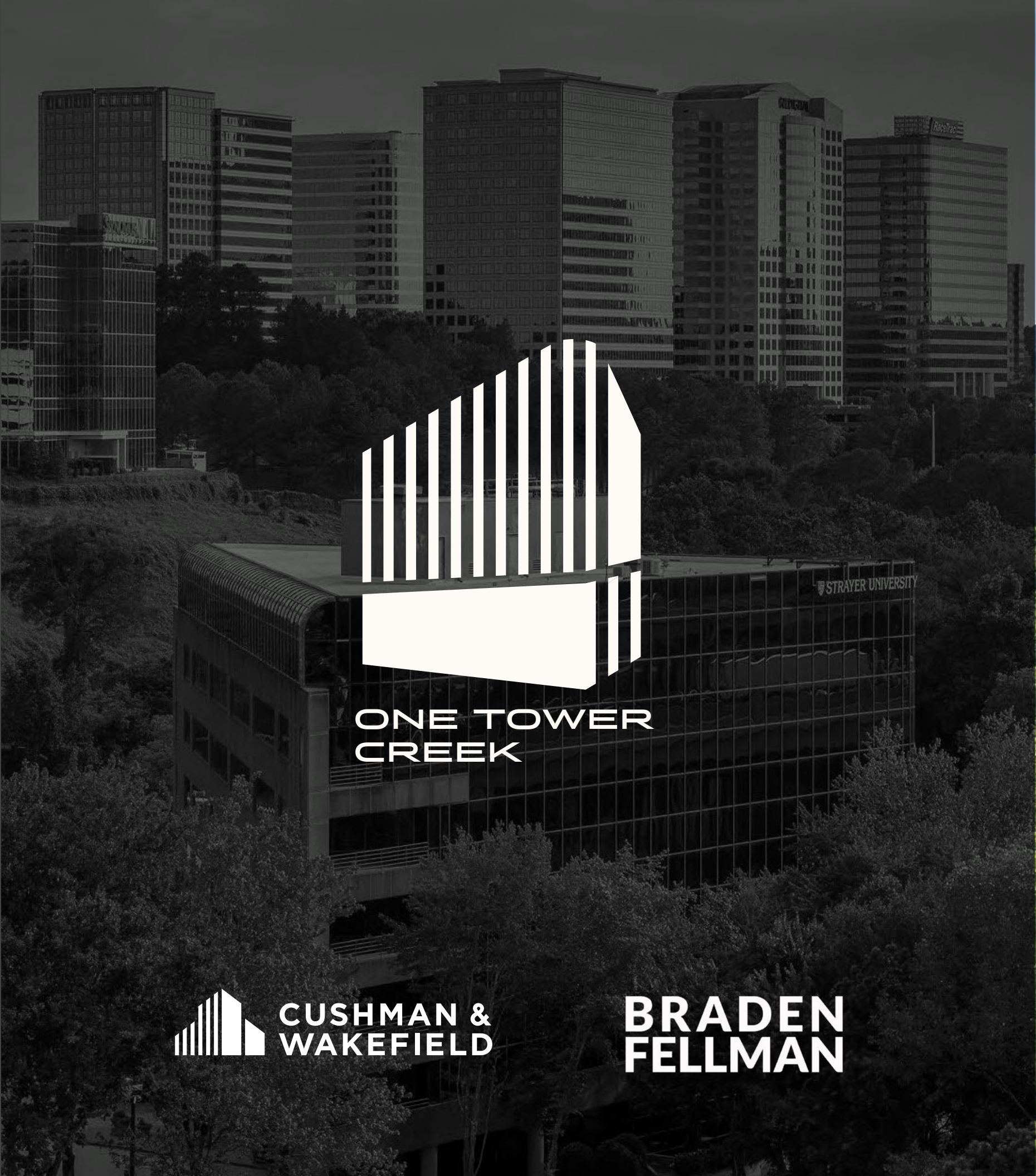
- - - Akers Mill Trail
- - - Rottenwood Creek Trail
- - - Bob Callan Trail
- - - Palisades W Trail

WHERE YOUR TEAM IS COMING FROM

One Tower Creek boasts a premier location with exceptional visibility and seamless access to Atlanta's thriving North Suburbs—home to a majority of the workforce—as well as to Buckhead, Vinings, Sandy Springs, and East Cobb, where there's an abundance of upscale executive housing.

- Buckhead
- Sandy Springs
- East Cobb
- Vinings
- Cobb/Fulton





**ONE TOWER
CREEK**

 **CUSHMAN &
WAKEFIELD**

**BRADEN
FELLMAN**

JOHN NEAL

SCOTT

JOHN.NEAL.SCOTT@CUSHWAKE.COM

404 218 1691