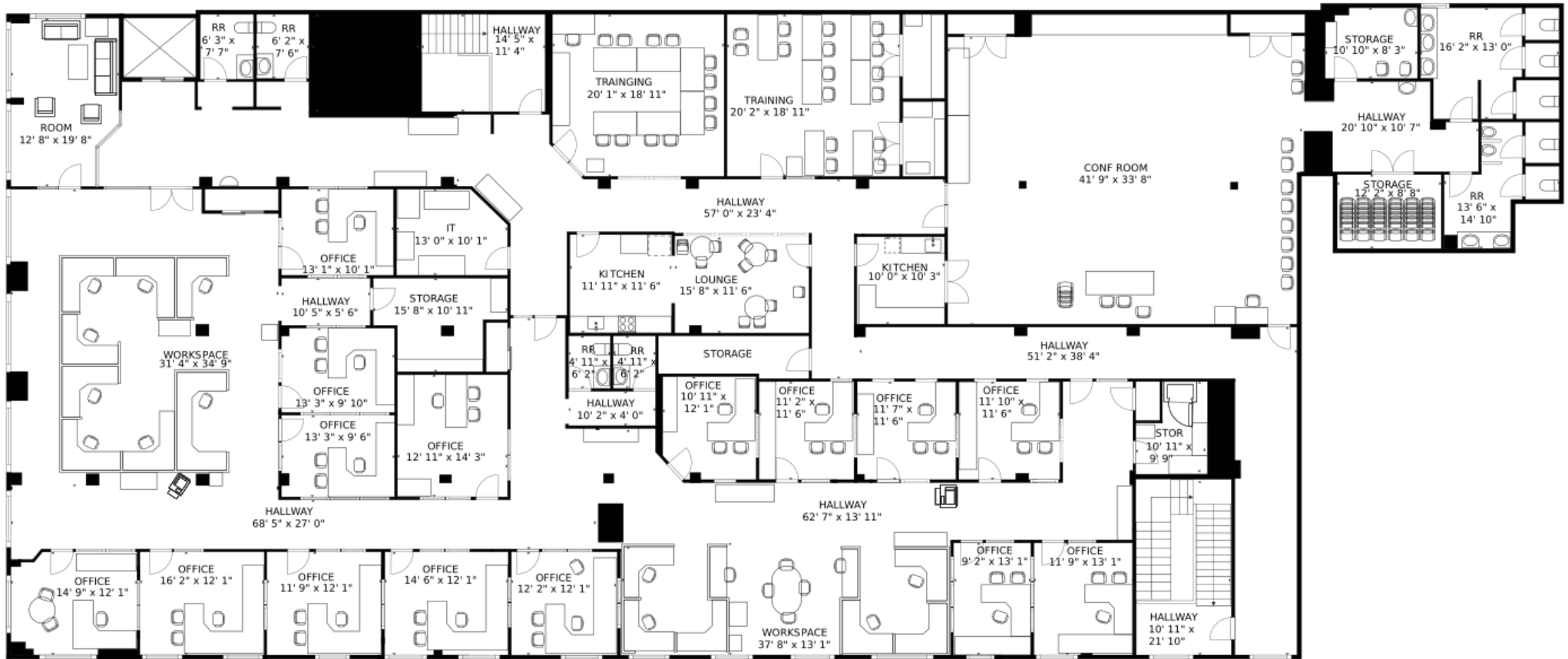


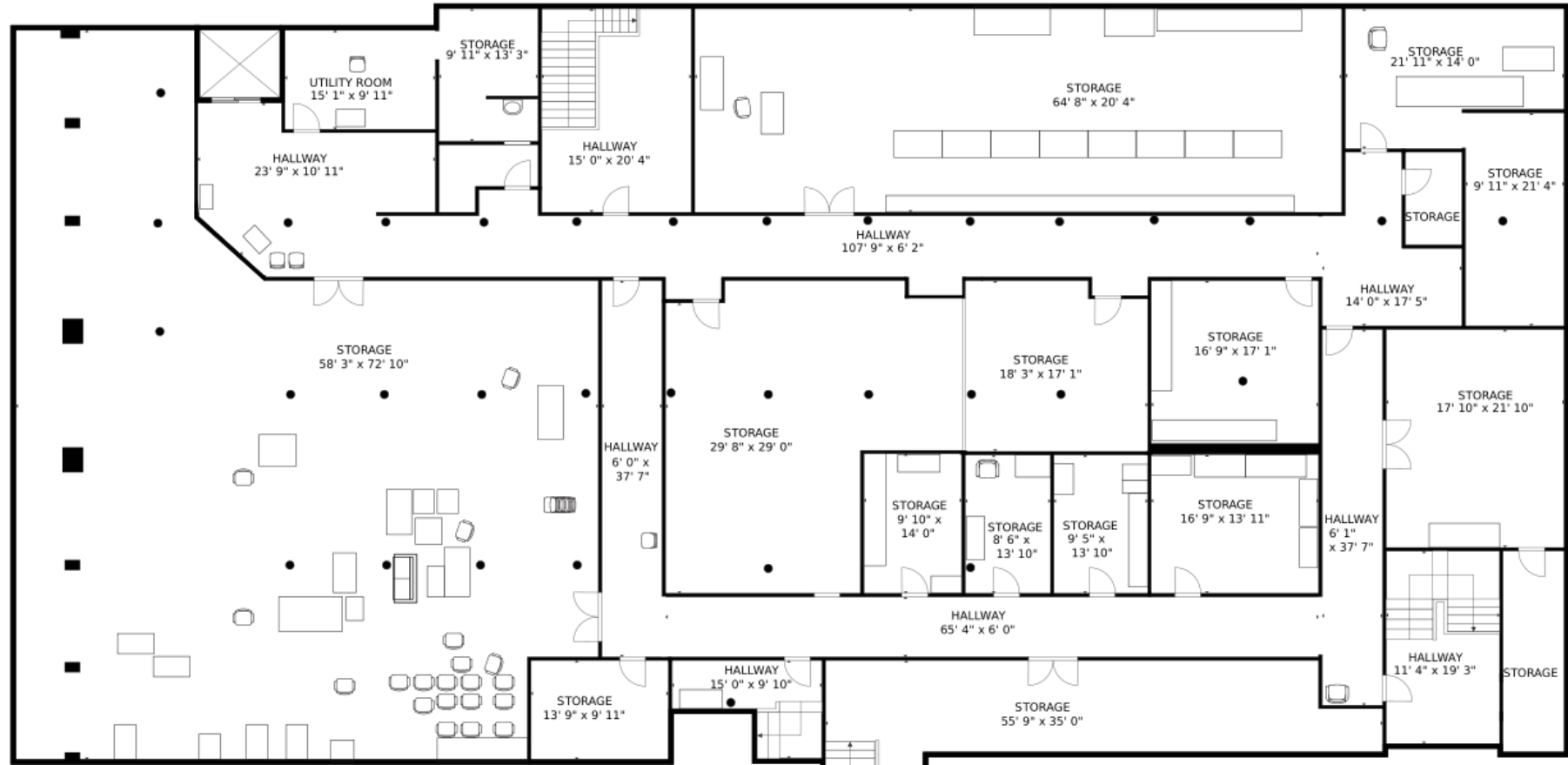
FLOOR 1

GROSS INTERNAL AREA
FLOOR 1: 11,383 sq. ft., FLOOR 2: 11,946 sq. ft., BASEMENT: 11,594 sq. ft
TOTAL: 34,923 sq. ft
SIZES AND DIMENSIONS ARE APPROXIMATE, ACTUAL MAY VARY.



FLOOR 2

GROSS INTERNAL AREA
 FLOOR 1: 11,383 sq. ft., FLOOR 2: 11,946 sq. ft., BASEMENT: 11,594 sq. ft.
 TOTAL: 34,923 sq. ft.
 SIZES AND DIMENSIONS ARE APPROXIMATE, ACTUAL MAY VARY.



BASEMENT

GROSS INTERNAL AREA
FLOOR 1: 11,383 sq. ft., FLOOR 2: 11,946 sq. ft., BASEMENT: 11,594 sq. ft
TOTAL: 34,923 sq. ft
SIZES AND DIMENSIONS ARE APPROXIMATE, ACTUAL MAY VARY.