

FOR SALE | RETAIL/OFFICE BUILDING

OWNER / USER OPPORTUNITY

2736 MAIN STREET
SANTA MONICA, CA 90405



GREG ECKHARDT

310.395.2663 X103

GECKO@PARCOMMERCIAL.COM

LIC# 01255469



INVESTMENT OVERVIEW

2736 MAIN STREET
SANTA MONICA, CA 90405

PRICE:	\$2,995,000.00
ADDRESS:	2736 Main Street Santa Monica, CA 90405
BUILDING:	Approximately 2,465 Square Feet (Price Per Square Foot: \$1,215)
LAND:	Approximately 2,178 Square Feet
APN:	4288-010-001 / 4288-010-008
YEAR BUILT:	1927
PROPERTY:	Retail / Office
ZONING:	SMCM2*
PARKING:	City of Santa Monica Parking Lot

INVESTMENT HIGHLIGHTS

- The Property is a single-story freestanding retail/office building which will be delivered vacant at the close of escrow
- Located on vibrant Main Street just a few blocks from the beach in Santa Monica with many walkable amenities in the area including restaurants, cafes, bars, an eclectic mix of retail shops and much more
- The demographic profile of the surrounding areas gives the underlying real estate a strong intrinsic value
- The average household income within a 3-mile radius of the subject property is \$139,550
- Close proximity to the beach and Downtown Santa Monica
- Great visibility with Main Street frontage and tremendous daily pedestrian and automobile traffic
- Neighbors include Saturday Farmers Market, Lula Cocina Mexicana, Starbucks and more
- Exposed brick with an industrial-inspired interior

GREG ECKHARDT

310.395.2663 X103

GECKO@PARCOMMERCIAL.COM

LIC# 01255469



All information furnished is from sources deemed reliable and which we believe to be correct, but no representation or guarantee is given as to its accuracy and is subject to errors and omissions. All measurements are approximate and have not been verified by Broker. You are advised to conduct an independent investigation to verify all information.

www.parcommercial.com

EXTERIOR OVERVIEW

2736 MAIN STREET
SANTA MONICA, CA 90405



GREG ECKHARDT

310.395.2663 X103

GECKO@PARCOMMERCIAL.COM

LIC# 01255469

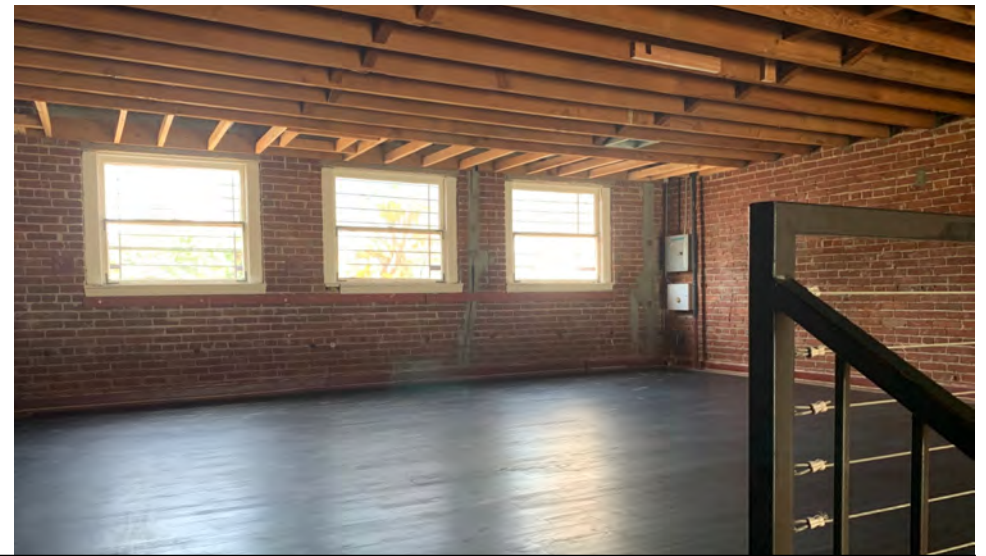
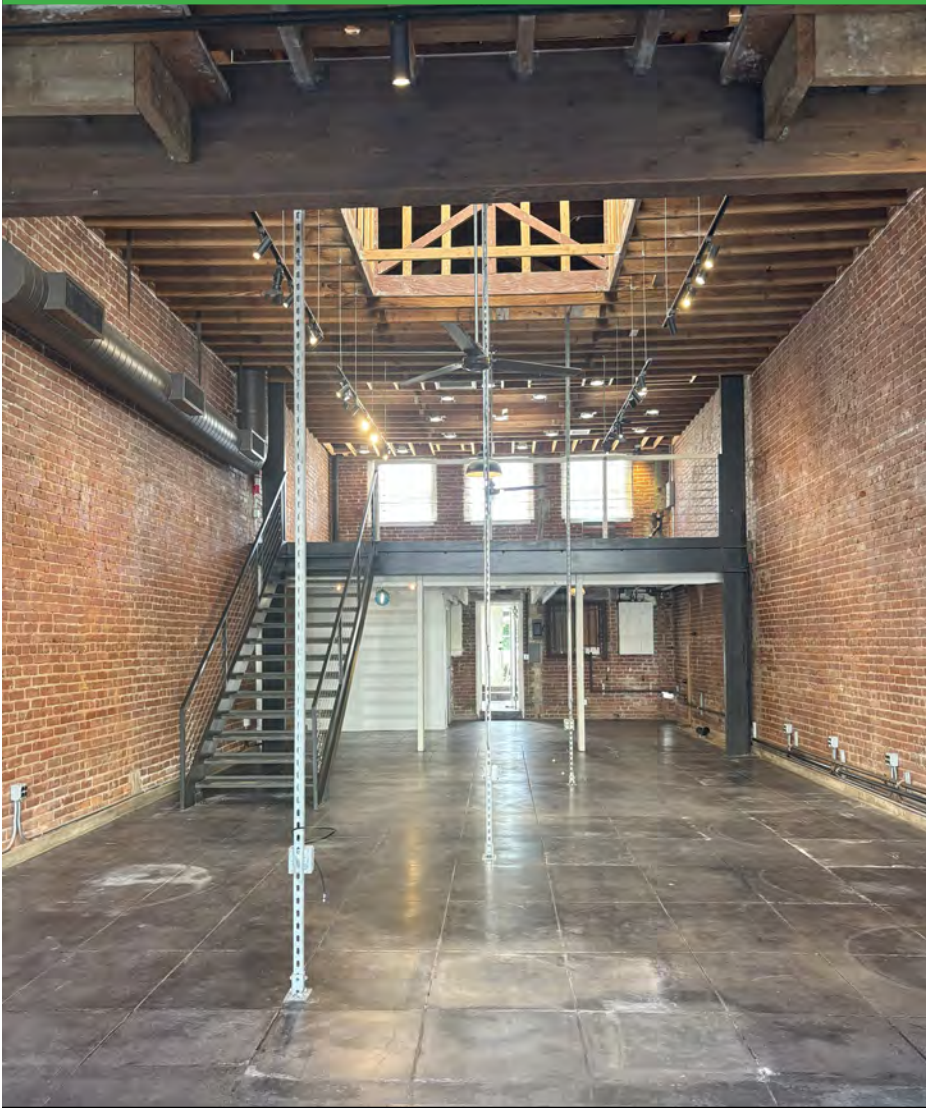
All information furnished is from sources deemed reliable and which we believe to be correct, but no representation or guarantee is given as to its accuracy and is subject to errors and omissions. All measurements are approximate and have not been verified by Broker. You are advised to conduct an independent investigation to verify all information.



www.parcommercial.com

INTERIOR VIEWS

2736 MAIN STREET
SANTA MONICA, CA 90405



GREG ECKHARDT

310.395.2663 X103

GECKO@PARCOMMERCIAL.COM

LIC# 01255469

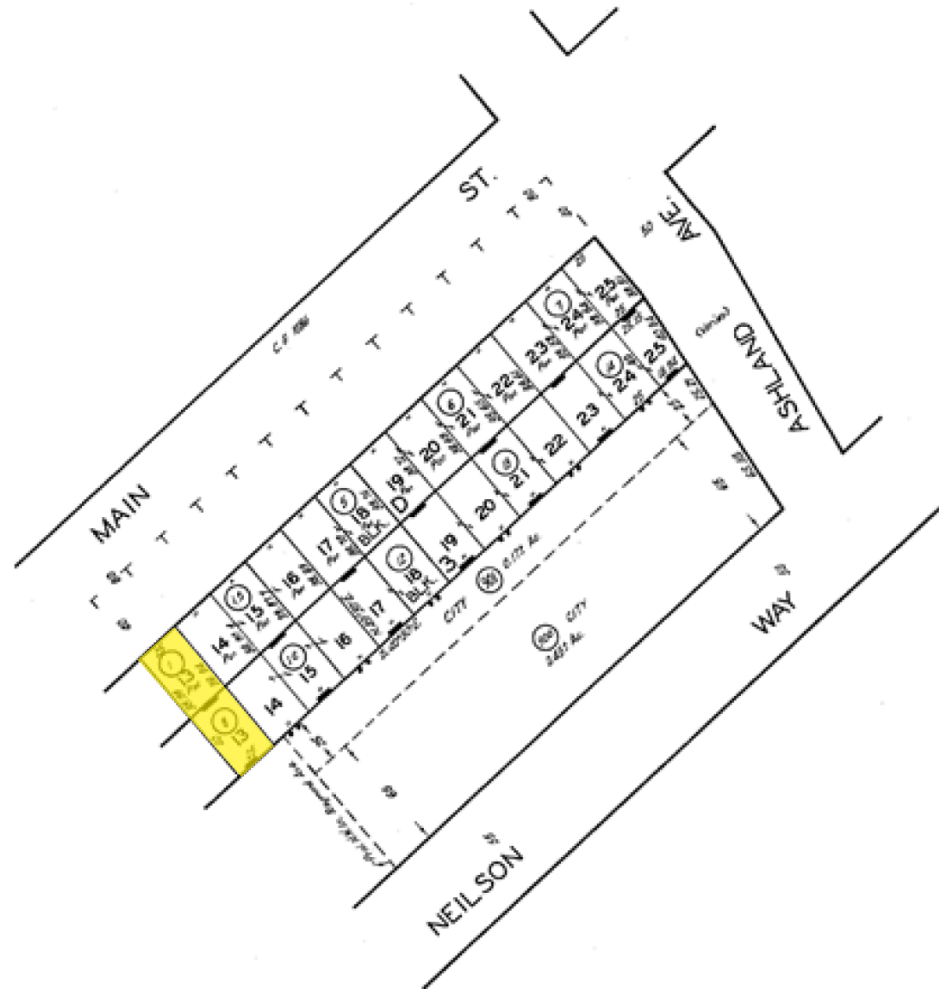
All information furnished is from sources deemed reliable and which we believe to be correct, but no representation or guarantee is given as to its accuracy and is subject to errors and omissions. All measurements are approximate and have not been verified by Broker. You are advised to conduct an independent investigation to verify all information.



www.parcommercial.com

PLAT MAP

2736 MAIN STREET
SANTA MONICA, CA 90405



GREG ECKHARDT

310.395.2663 X103

GECKO@PARCOMMERCIAL.COM

LIC# 01255469

All information furnished is from sources deemed reliable and which we believe to be correct, but no representation or guarantee is given as to its accuracy and is subject to errors and omissions. All measurements are approximate and have not been verified by Broker. You are advised to conduct an independent investigation to verify all information.



www.parcommercial.com

AREA DEMOGRAPHICS

2736 MAIN STREET
SANTA MONICA, CA 90405



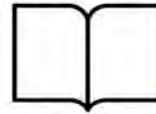
Housing Units
18,020



Estimated Population
29,916



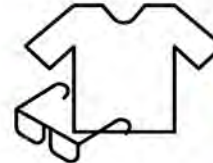
Median Home Value
\$1,119,350



Educational Attainment
63%
with college or higher degree



Average Household Income
\$128,977



Apparel, Food/Entertainment & Services
\$251,069
2023 yearly consumer spending

	1-MILE RADIUS	3-MILE RADIUS	5-MILE RADIUS
POPULATION			
2029 Projected Population	29,284	183,126	443,385
2024 Estimated Population	29,916	186,622	451,998
2020 Census Population	29,441	181,400	440,085
Growth 2024-2029	-2.11%	-1.87%	-1.94%
Growth 2020-2024	1.61%	2.88%	2.71%
2024 HOUSEHOLDS BY HH INCOME \$50,000 +			
\$50,000-\$74,999	1,664	9,745	23,995
\$75,000-\$99,000	1,585	8,050	21,464
\$100,000 +	7,521	51,022	81,162
TOTAL	10,770	68,817	126,621
2024 Estimated Average HH Income	\$129,977	\$142,894	\$139,550
2024 Estimated Households	15,755	94,015	212,095

GREG ECKHARDT

310.395.2663 X103

GECKO@PARCOMMERCIAL.COM

LIC# 01255469

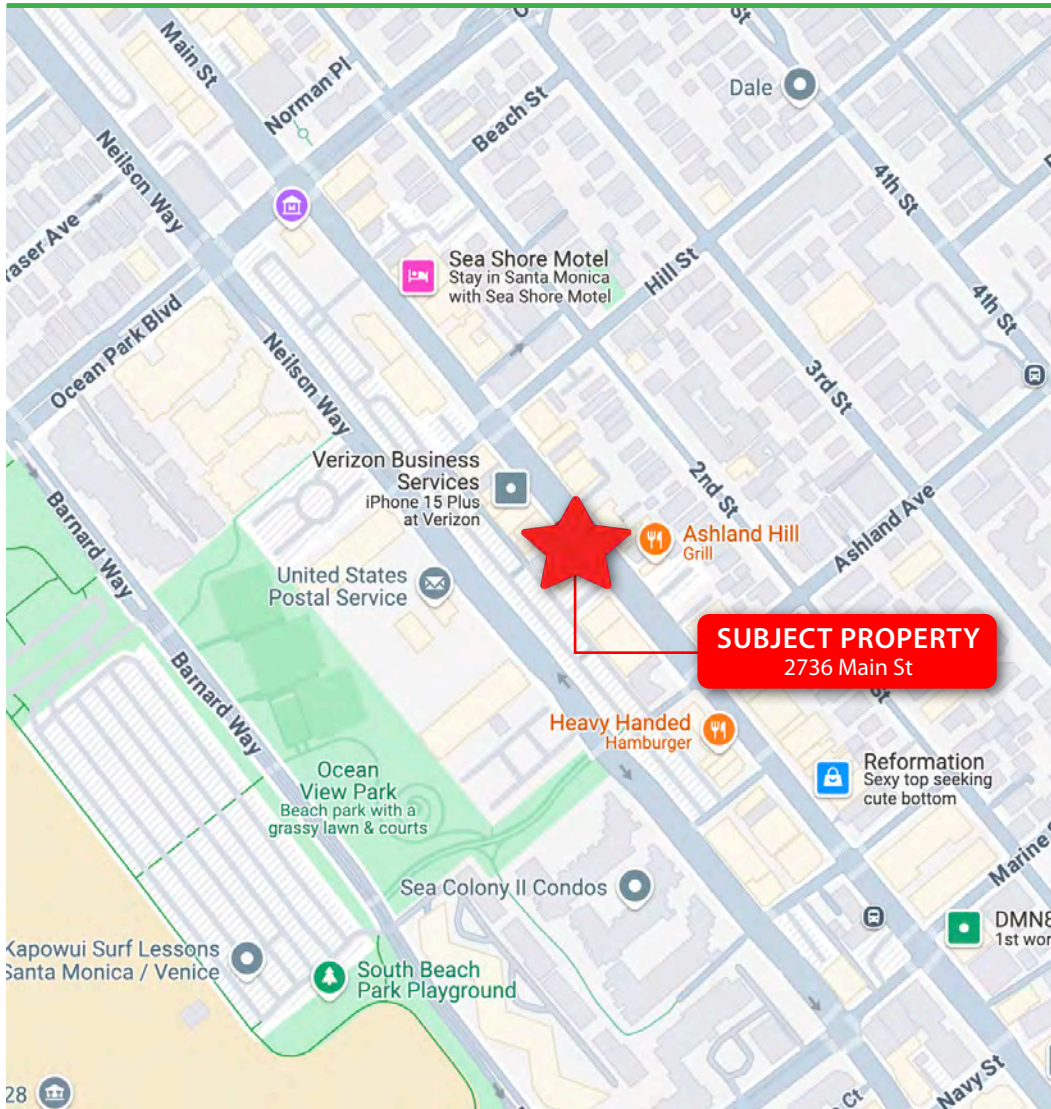


All information furnished is from sources deemed reliable and which we believe to be correct, but no representation or guarantee is given as to its accuracy and is subject to errors and omissions. All measurements are approximate and have not been verified by Broker. You are advised to conduct an independent investigation to verify all information.

www.parcommercial.com

AREA OVERVIEW

2736 MAIN STREET
SANTA MONICA, CA 90405



Santa Monica is a beachside city of 8.3 square miles on the westside of Los Angeles County. Offering an environment of unparalleled natural beauty, the city is home to a mix of residential communities, commercial districts and recreational venues. Recently named by National Geographic as one of the “Top 10 Beach Cities in The World”, and by TIME as one of the “Best Places to Live”, Santa Monica features 3 miles of Pacific beaches and the Santa Monica Pier. Santa Monica’s residential population is approximately 93,000 increasing to an estimated 250,000 during the day with tourist, shoppers and employees. Tourism attracts over 8 million visitors annually. Part of the reason that so many world-renowned chefs set up shop in Santa Monica is due to its numerous bountiful farmers markets. Named by Travel + Leisure as the best farmers market in the country, Santa Monica’s four weekly farmers markets attract the city’s residents and local chefs with the freshest produce, flowers, meats, cheeses, nuts, fish, and more.

GREG ECKHARDT

310.395.2663 X103

GECKO@PARCOMMERCIAL.COM

LIC# 01255469

All information furnished is from sources deemed reliable and which we believe to be correct, but no representation or guarantee is given as to its accuracy and is subject to errors and omissions. All measurements are approximate and have not been verified by Broker. You are advised to conduct an independent investigation to verify all information.



www.parcommercial.com