

# For Sale & Lease

📍 100 Middlesex Avenue, Carteret, NJ

🏠 100,000 SF – Unit 1 | 108,000 SF – Unit 3 | 95,000 SF – Unit 4



## Get in Touch

**Jordan Metz**

Senior Vice President

973-493-0385

[jordan@metzindustrial.com](mailto:jordan@metzindustrial.com)

**Benito Abbate**

Senior Associate

908-655-8331

[ben@metzindustrial.com](mailto:ben@metzindustrial.com)

**James Friel**

Sales Associate

908-305-9001

[james@metzindustrial.com](mailto:james@metzindustrial.com)




Unit 1

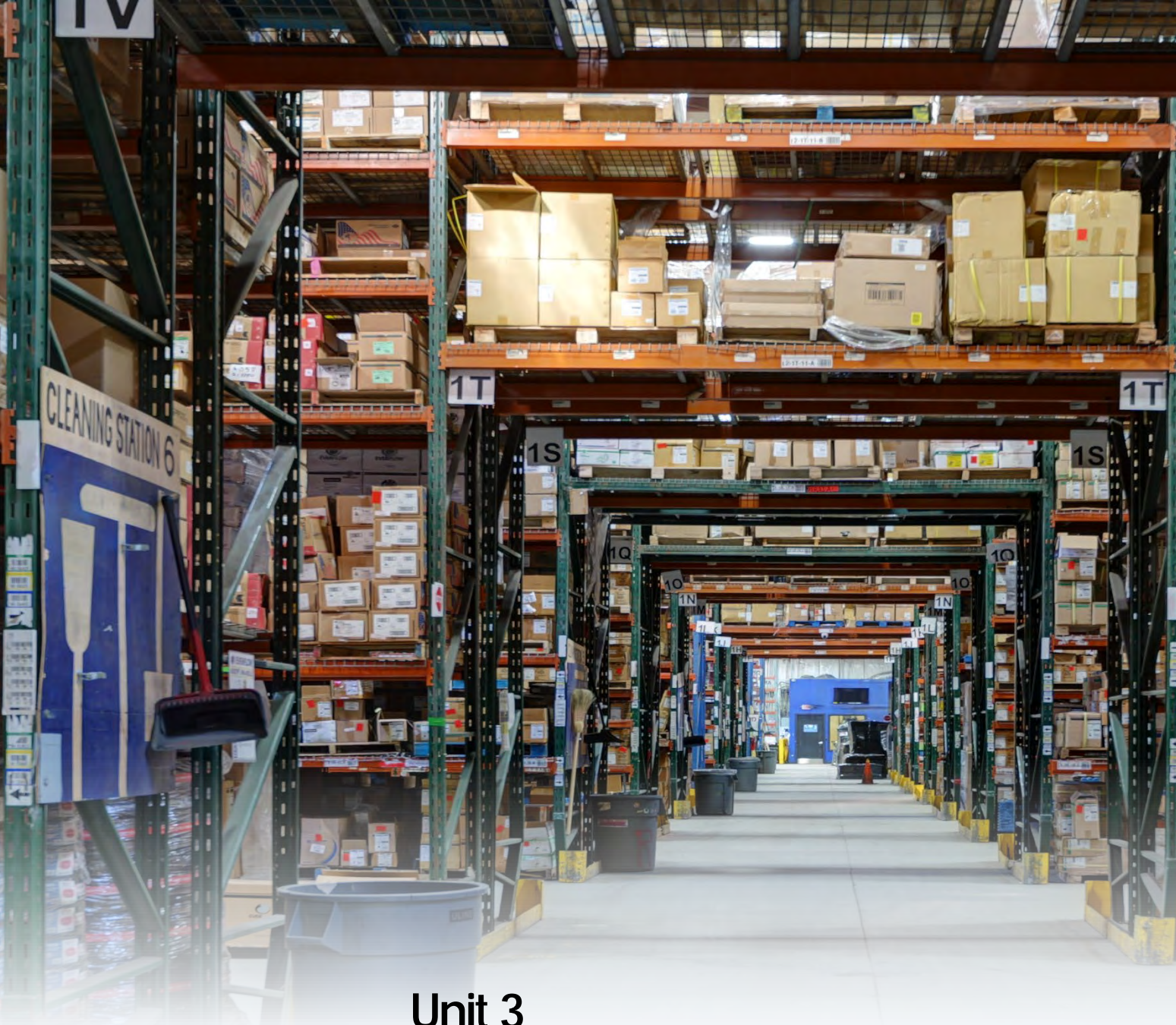
 **100,000 SF Available** | 10,000 SF Office

 **15 Tailboards & 1 Drive-in Door**

 **26' Clear**

 **Wet Sprinkler** | 800 Amps/480 Volts Power

 **Ample Surface Parking**




Unit 3

 **108,000 SF Available** | 2,500 SF Office

 **16 Tailboards & 1 Drive-in Door**

 **26' Clear**

 **Wet Sprinkler** | 800 Amps/480 Volts Power

 **Ample Surface Parking**




Unit 4

 **95,000 SF Available** | 3,500 SF Office

 **8 Tailboards**

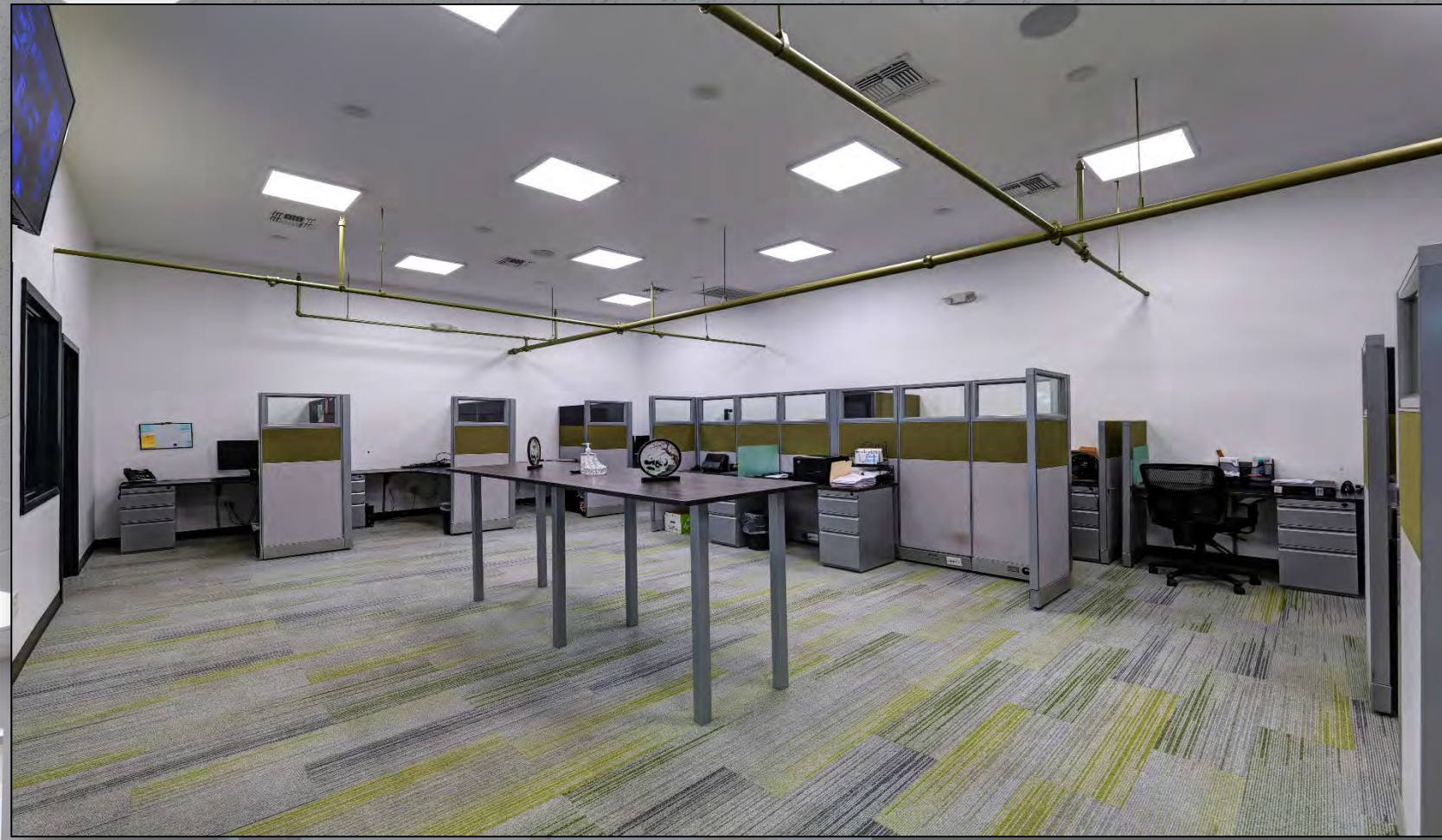
 **26' Clear**

 **Wet Sprinkler** | 800 Amps/480 Volts Power

 **Ample Surface Parking**

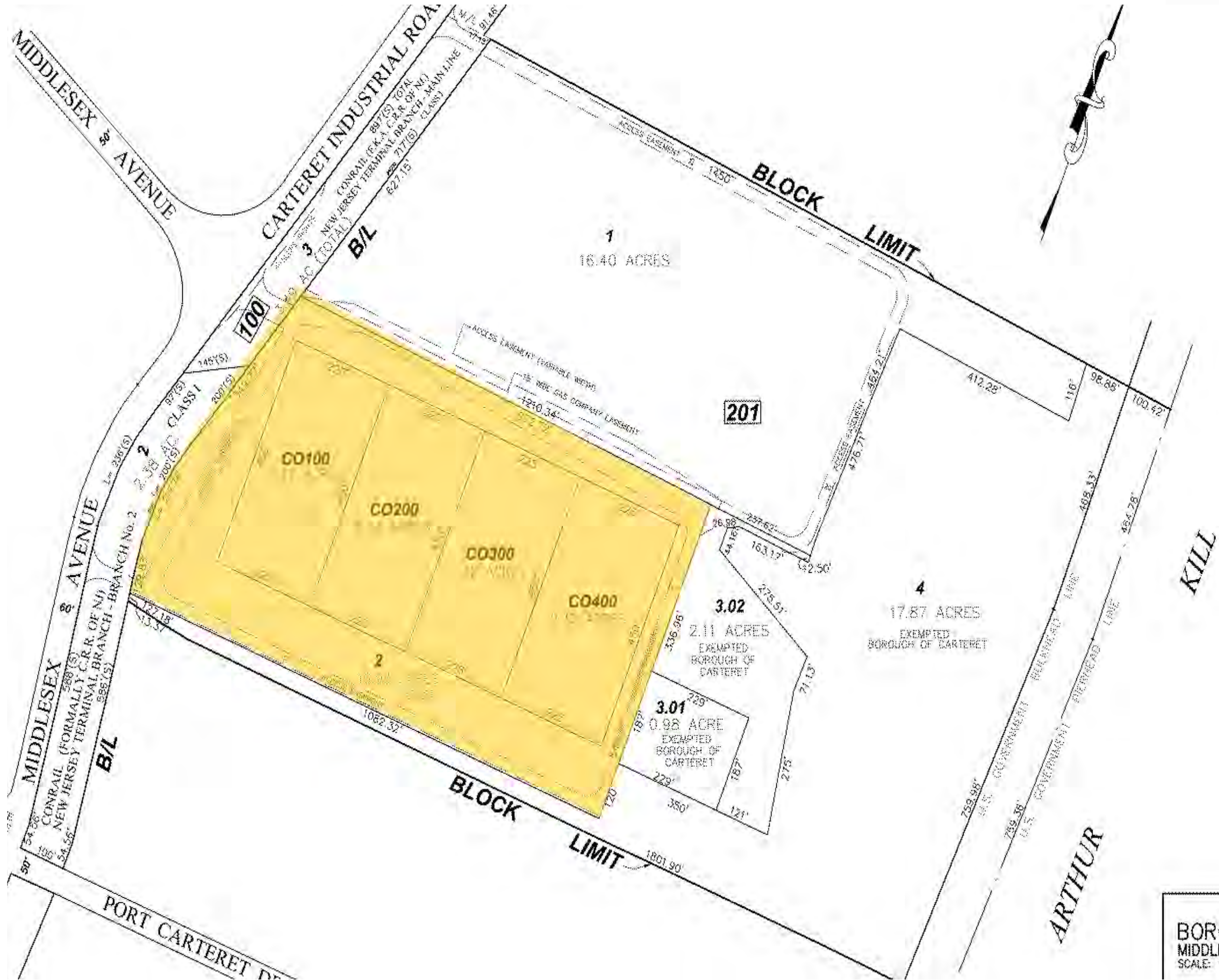




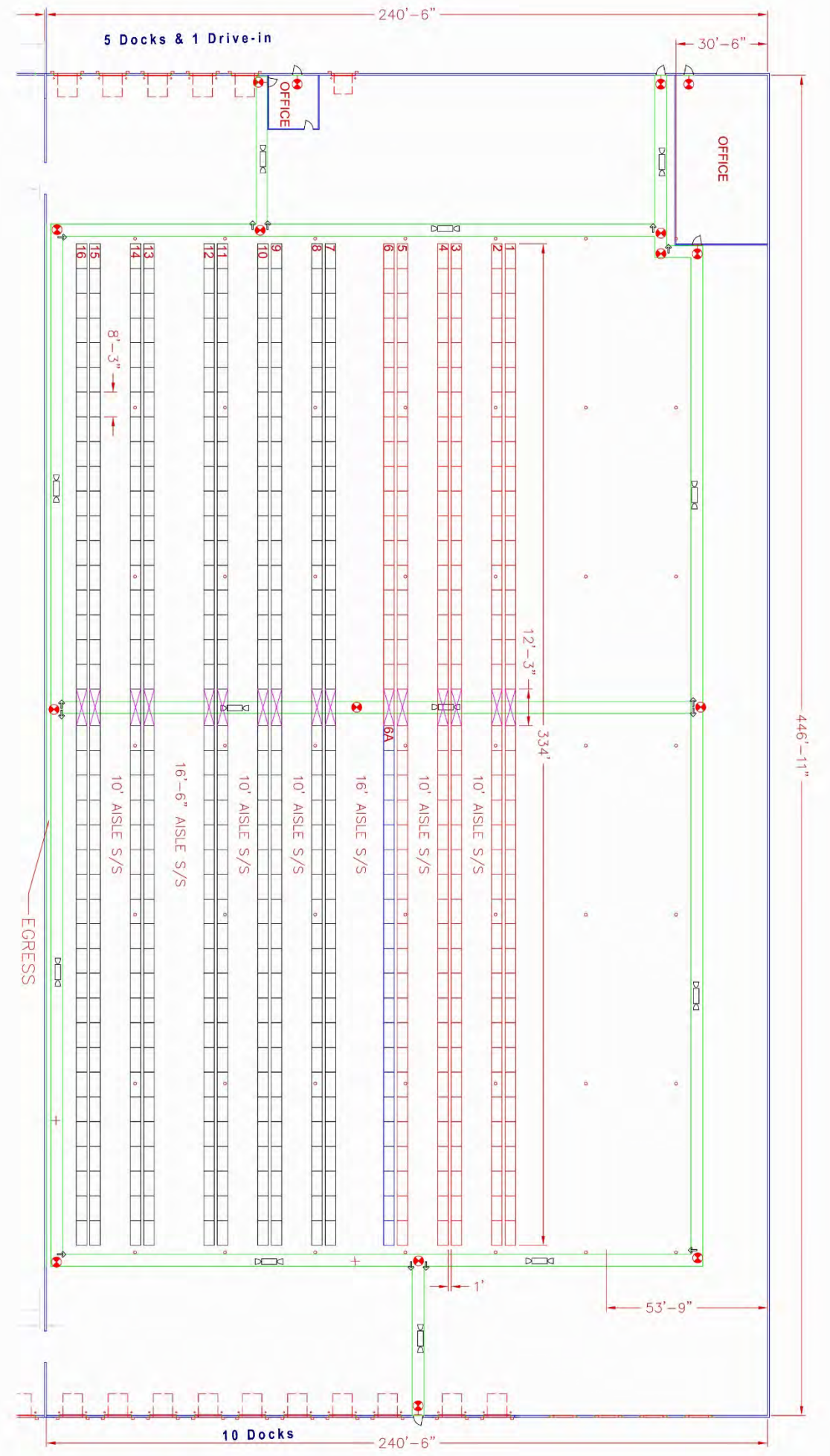






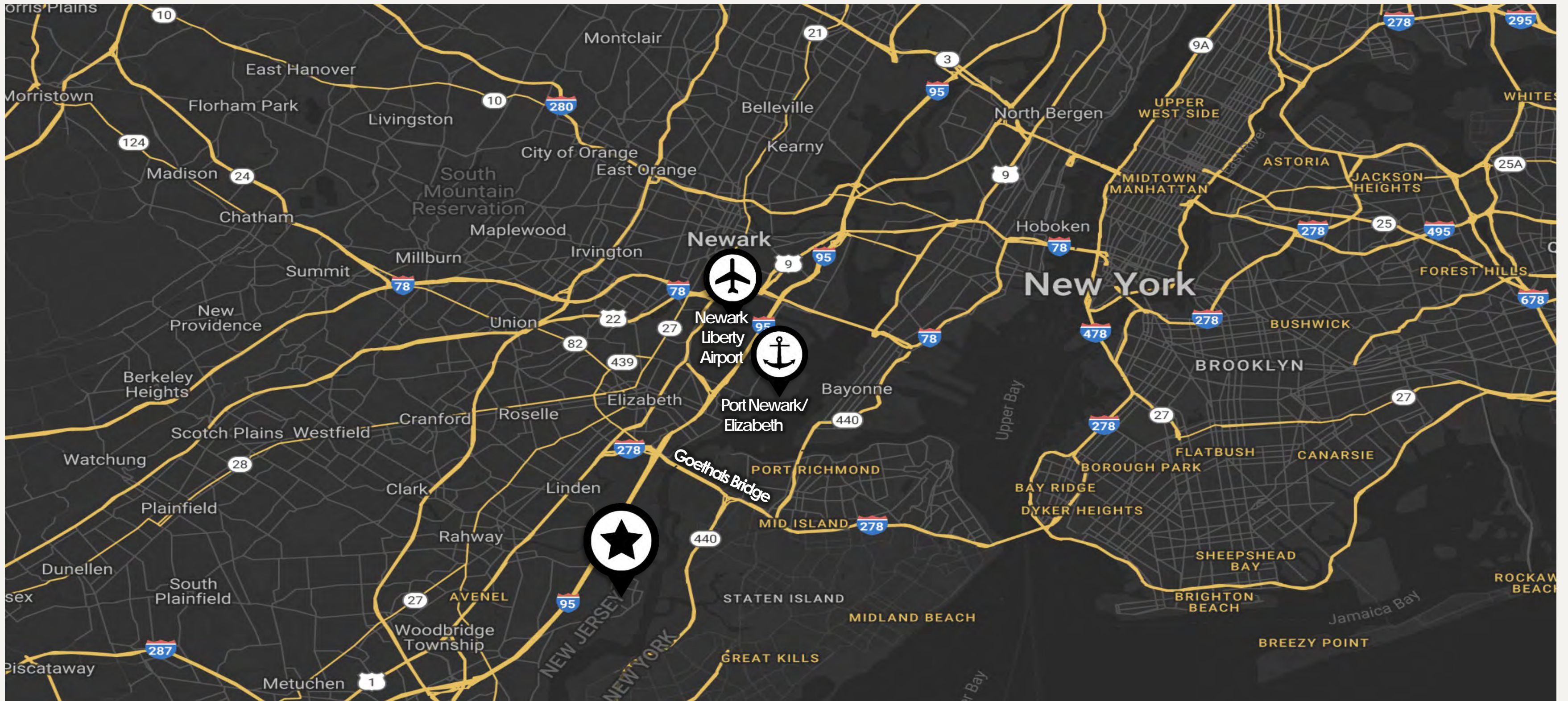


**BOROUGH OF MIDDLESEX**  
 SCALE: 1" = 40'



# Location Map

 100 Middlesex Avenue, Carteret, NJ



## Proximity Highlights

- Urban Enterprise Zone
- Near Exit 12 of NJ Turnpike, Routes 1-9 & I-78
- Close Proximity to Goethals Bridge
- Minutes to Newark Liberty Airport & Port Elizabeth/Newark





📍 100 Middlesex Avenue, Carteret, NJ

The city of **Carteret, NJ** is in a prime port-adjacent location with access to:

- Newark Liberty Airport
- Port Elizabeth/Newark
- Staten Island via the **Goethals Bridge**

With road access to:

- Route 1-9
- Exit 12 NJ Turnpike / I-95
- I-78



For more information please contact  
our exclusive brokers:

**Jordan Metz**

Senior Vice President

**973-493-0385**

[jordan@metzindustrial.com](mailto:jordan@metzindustrial.com)

**Benito Abbate**

Senior Associate

**908-655-8331**

[ben@metzindustrial.com](mailto:ben@metzindustrial.com)

**James Friel**

Sales Associate

**908-305-9001**

[james@metzindustrial.com](mailto:james@metzindustrial.com)



This document has been prepared by Bussel Realty Corp. based on public information. Bussel Realty Corp. makes no guarantees, representations or warranties of any kind, expressed or implied, regarding the information including, but not limited to, warranties of content, accuracy and reliability. Any interested party should undertake their own inquiries as to the accuracy of the information. Bussel Realty Corp. excludes unequivocally all inferred or implied terms, conditions and warranties arising out of this document and excludes all liability for loss and damages arising there from. This publication is the copyrighted property of Bussel Realty Corp. and/or its licensor(s).