

High-Bay Warehouse Space Available!

1564 Firestone Pkwy  
Akron, OH

FOR LEASE



**Tim Breckner, SIOR**  
Senior Vice President  
+1 216 314 0687  
tim.breckner@colliers.com

**Conor Toomey, SIOR**  
Senior Vice President  
+1 440 539 9649  
conor.toomey@colliers.com



**Colliers**  
200 Public Square  
Suite 1050  
Cleveland, OH 44114  
+1 216 239 5060



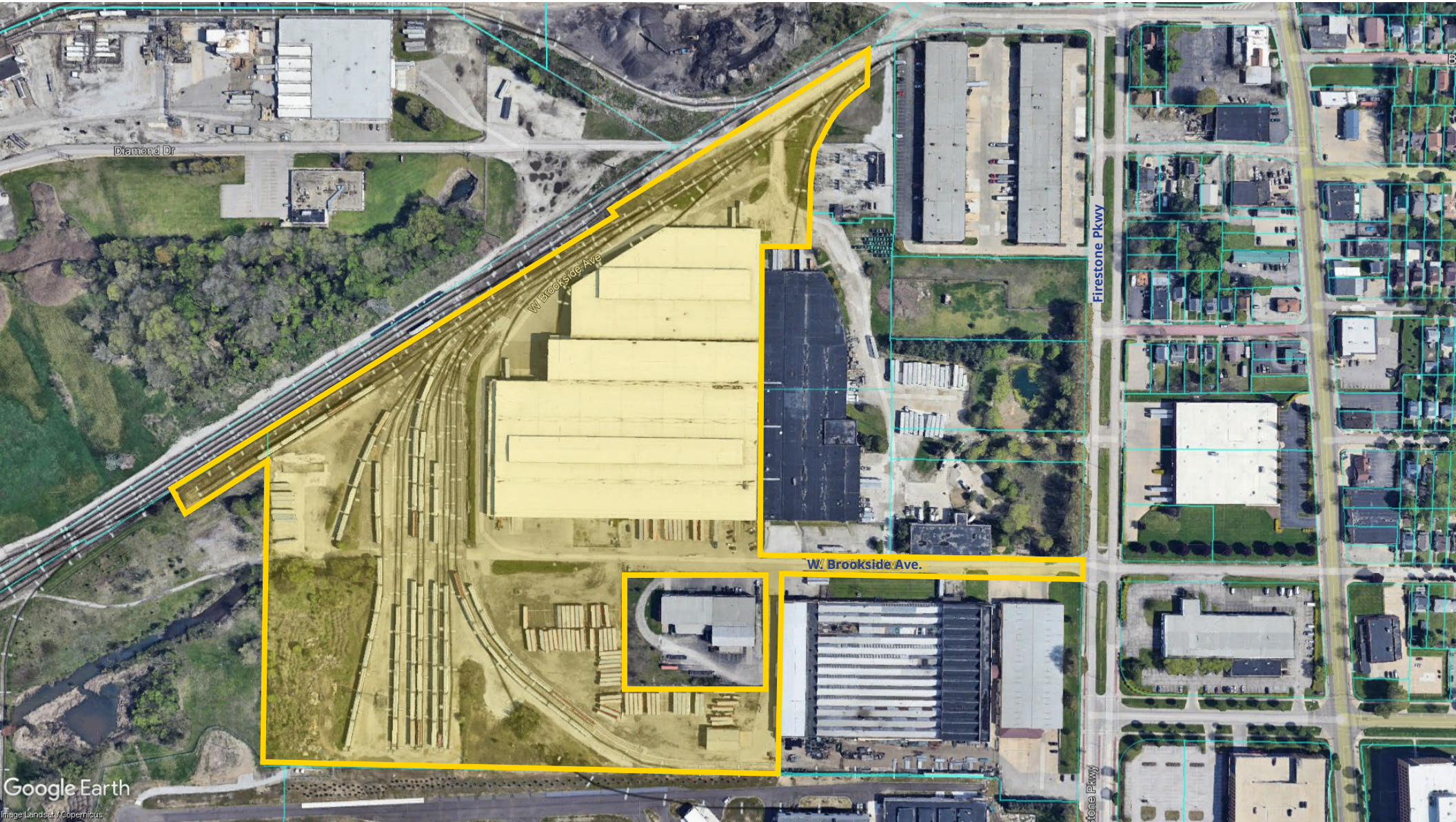
Accelerating success.

# Executive Summary

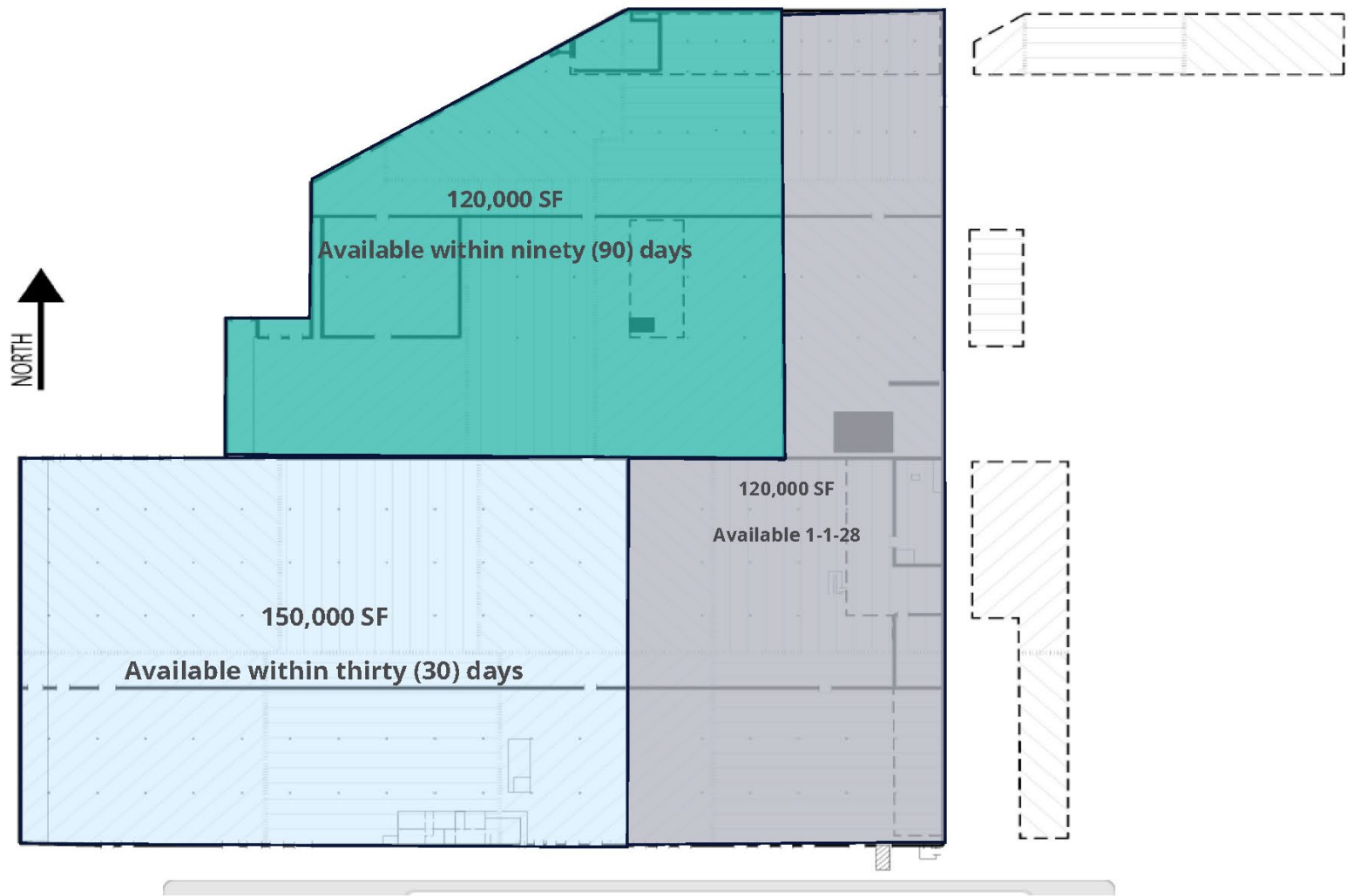
<b>Address</b>	1564 Firestone Pkwy
<b>City, State Zip</b>	Akron, OH 44301
<b>County</b>	Summit
<b>Acres</b>	33.57
<b>Total SF</b>	400,000 divisible to 120,000
<b>Year Built</b>	1940
<b>Clear Height</b>	20' - 45'
<b>Docks</b>	28
<b>Rail Access</b>	Yes, extensive railyard onsite with indoor access
<b>Trailer Storage</b>	Yes, approximately four (4) acres
<b>Drive-Ins</b>	3
<b>Sprinklers</b>	Dry
<b>Comments</b>	Warehouse and logistics services available. Truck scale onsite.
<b>Lease price</b>	\$4.75/SF NNN



# Property Aerial – Parcel Outline



# Available Space Plan



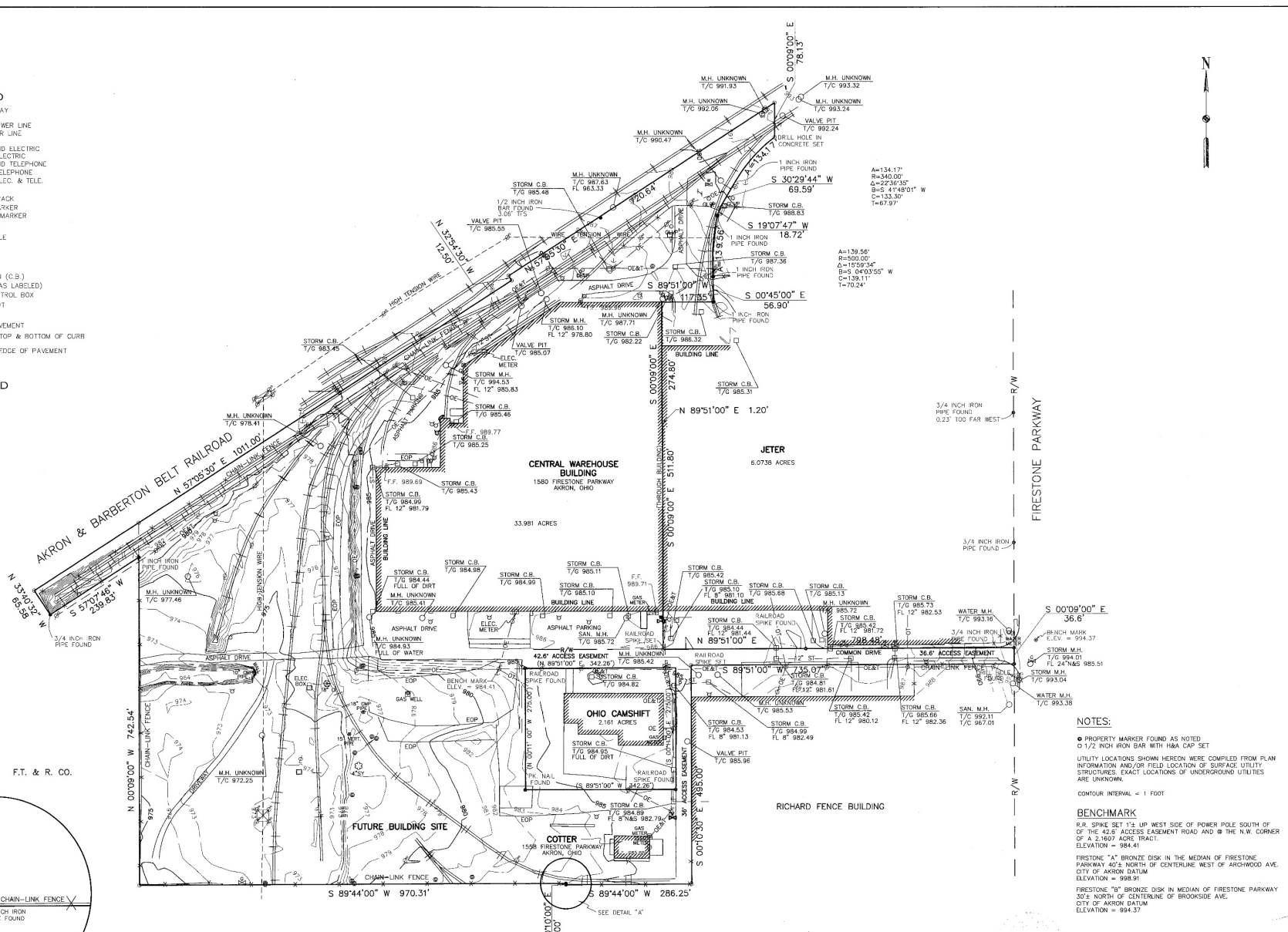
# Site Plan

## LEGEND

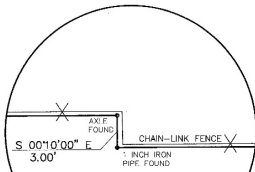
- R/W- RIGHT-OF-WAY
- W- WATER LINE
- S- SANITARY SEWER LINE
- ST- STORM SEWER LINE
- G- GAS LINE
- UE- UNDERGROUND ELECTRIC
- OE- OVERHEAD ELECTRIC
- UT- UNDERGROUND TELEPHONE
- OT- OVERHEAD TELEPHONE
- OEA- OVERHEAD ELEC. & TEL.
- X-X- FENCE
- RAILROAD TRACK
- GAS LINE MARKER
- WATER LINE MARKER
- POWER POLE
- GENERAL POLE
- LIGHT POLE
- ANCHOR
- SIGN
- CATCH BASIN (C.B.)
- MAN HOLE (AS LABELED)
- TRAFFIC CONTROL BOX
- FIRE HYDRANT
- VALVE
- EOP
- SPOT ELEV. TOP & BOTTOM OF CURB
- SPOT ELEV. EDGE OF PAVEMENT

## TREE LEGEND

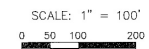
- O OAK
- C ELM
- M CHERRY
- A MAPLE
- T TREE
- A APPLE
- W WILLOW



F.T. & R. CO.



F.T. & R. CO.



## NOTES:

- PROPERTY MARKER FOUND AS NOTED
- 1/2 INCH IRON BAR WITH H&A CAP SET
- UTILITY LOCATIONS SHOWN HEREON WERE COMPILED FROM PLAN INFORMATION AND/OR FIELD LOCATION OF SURFACE UTILITY STRUCTURES. EXACT LOCATIONS OF UNDERGROUND UTILITIES ARE UNKNOWN.
- CONTOUR INTERVAL = 1 FOOT
- BENCHMARK**
- R/R SPIKE SET 1/2 UP WEST SIDE OF POWER POLE SOUTH OF THE 42.6' ACCESS EASEMENT ROAD AND @ THE N.W. CORNER OF A 2.1607 ACRE TRACT. ELEVATION = 984.41
- FIRESTONE "A" BRONZE DISK IN THE MEDIAN OF FIRESTONE PARKWAY 40' NORTH OF CENTERLINE WEST OF ARCHWOOD AVE. CITY OF AKRON DATUM. ELEVATION = 988.91
- FIRESTONE "B" BRONZE DISK IN MEDIAN OF FIRESTONE PARKWAY 30' NORTH OF CENTERLINE OF BROOKSIDE AVE. CITY OF AKRON DATUM. ELEVATION = 984.37

**TOPOGRAPHIC MAP**  
 33,981 ACRE TRACT  
 SITUATED IN THE CITY OF AKRON, COUNTY OF STARK, OHIO  
 BEING PART OF ORIGINAL LOT 18, TRACT TO  
 FORMERLY COPLEY TOWNSHIP

DESIGNED BY:	DATE:	DESCRIPTION:
CHECKED BY:	DATE:	DESCRIPTION:
REVIEWED BY:	DATE:	DESCRIPTION:
DATE:	APRIL 1999	
COPYRIGHT:	1999	

HAMMONTRIE & ASSOCIATES, LTD.  
 ENGINEERS, PLANNERS, SURVEYORS  
 CANTON, OHIO 44705 RITTSBERG AVENUE  
 2233 COLUMBIAN BLVD., JERSEY LANTANA, FLORIDA 33405  
 PHONE: CANTON (330) 468-8817 AKRON (330) 943-1774  
 TOLL FREE: 1-800-334-8917 FAX: (330) 949-6148

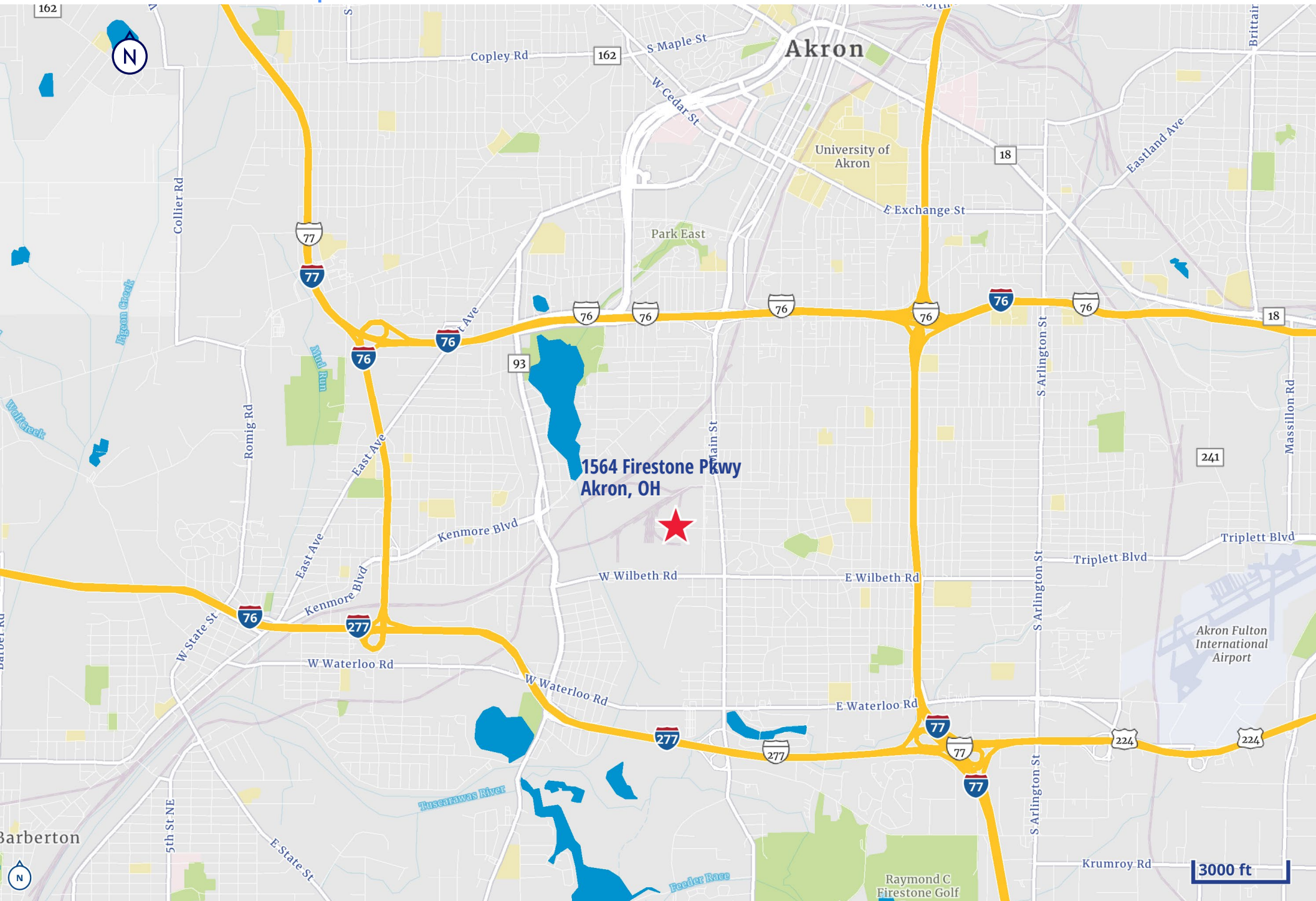
HAMMONTRIE & ASSOCIATES, LIMITED  
 Charles W. Hammontrief, P.S. 5/5/99  
 Charles F. Hammontrief, P.S. #7283

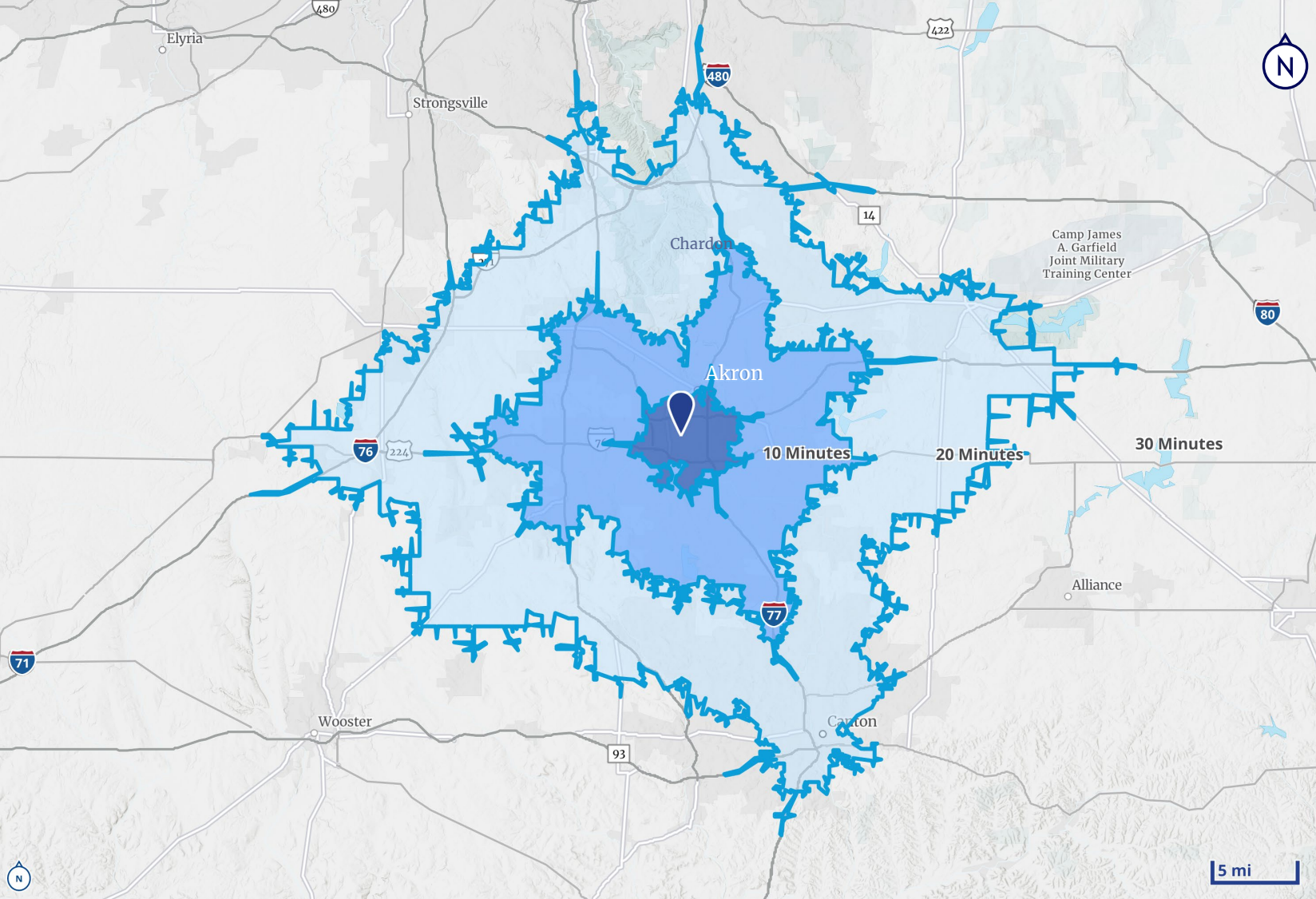
# Property Photos



# Aerial Map



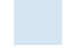
 [Click to view interactive map](#)





 [Click here for more in-depth Demographics](#)

# Drive Time

- 10-minute drive = 
- 20-minute drive = 
- 30-minute drive = 

**Demographics  
(within 20 minutes)**

---

**Population**  
454,729

---

**Median household Income**  
\$65,594

---

**Businesses**  
16,968

---

**Median age**  
41.5

**Tim Breckner, SIOR**  
Senior Vice President  
+1 216 314 0687  
tim.breckner@colliers.com

**Conor Toomey, SIOR**  
Senior Vice President  
+1 440 539 9649  
conor.toomey@colliers.com

**Colliers**  
200 Public Square, Suite 1050  
Cleveland, OH 44114  
+1 216 239 5060



This document/email has been prepared by Colliers for advertising and general information only. Colliers makes no guarantees, representations or warranties of any kind, expressed or implied, regarding the information including, but not limited to, warranties of content, accuracy and reliability. Any interested party should undertake their own inquiries as to the accuracy of the information. Colliers excludes unequivocally all inferred or implied terms, conditions and warranties arising out of this document and excludes all liability for loss and damages arising there from. This publication is the copyrighted property of Colliers and /or its licensor(s). © 2026. All rights reserved. This communication is not intended to cause or induce breach of an existing listing agreement.

Colliers.com

Accelerating success.