

FOR SALE | WAREHOUSE / RETAIL

320 Knowles

320 S Knowles Avenue, New Richmond, WI 54017



Located in the heart of downtown New Richmond, 320 S Knowles Avenue boasts of mostly open 9,000 square feet. The possibilities for this space are immense. It is surrounded by many kinds of businesses and restaurants.

Property Features

- 9,000 square feet building
 - Front retail approximately 3,300 SF
 - Basement is approximately 2,700 SF
- .24 acres
- New roof, furnace and air conditioner installed in 2014
- 3-phase electric
- Owner financing available
- 60 feet on Knowles Avenue (State Hwy 65)
- Drive-in door
- Listing price \$1,100,000



2026 Taxes - \$8,112

Contact Us

BEN BRUNO
Brokerage Services



651.621.2563
ben@terracegroupllc.com

ERIC DUEHOLM
Partner



651.621.2550
eric@terracegroupllc.com

Full Property Information at:
320knowles.com

FOR SALE | WAREHOUSE / RETAIL
320 Knowles
320 S Knowles Avenue, New Richmond, WI 54017

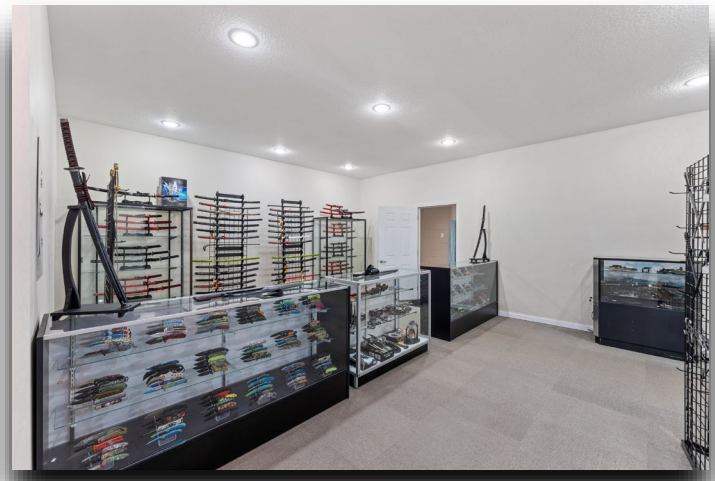


BEN BRUNO
Brokerage Services
651.621.2563
ben@terracegrouppllc.com

ERIC DUEHOLM
Partner
651.621.2550
eric@terracegrouppllc.com

Full Property Information at:
320knowles.com

FOR SALE | WAREHOUSE / RETAIL
320 Knowles
320 S Knowles Avenue, New Richmond, WI 54017

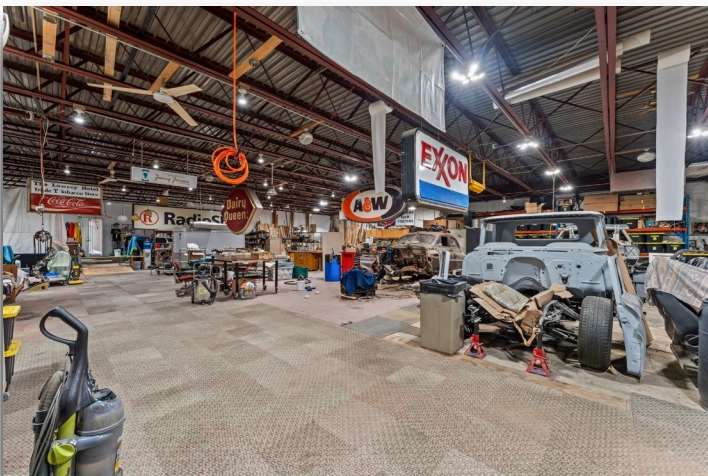


BEN BRUNO
Brokerage Services
651.621.2563
ben@terracegrouppllc.com

ERIC DUEHOLM
Partner
651.621.2550
eric@terracegrouppllc.com

Full Property Information at:
320knowles.com

FOR SALE | WAREHOUSE / RETAIL
320 Knowles
320 S Knowles Avenue, New Richmond, WI 54017

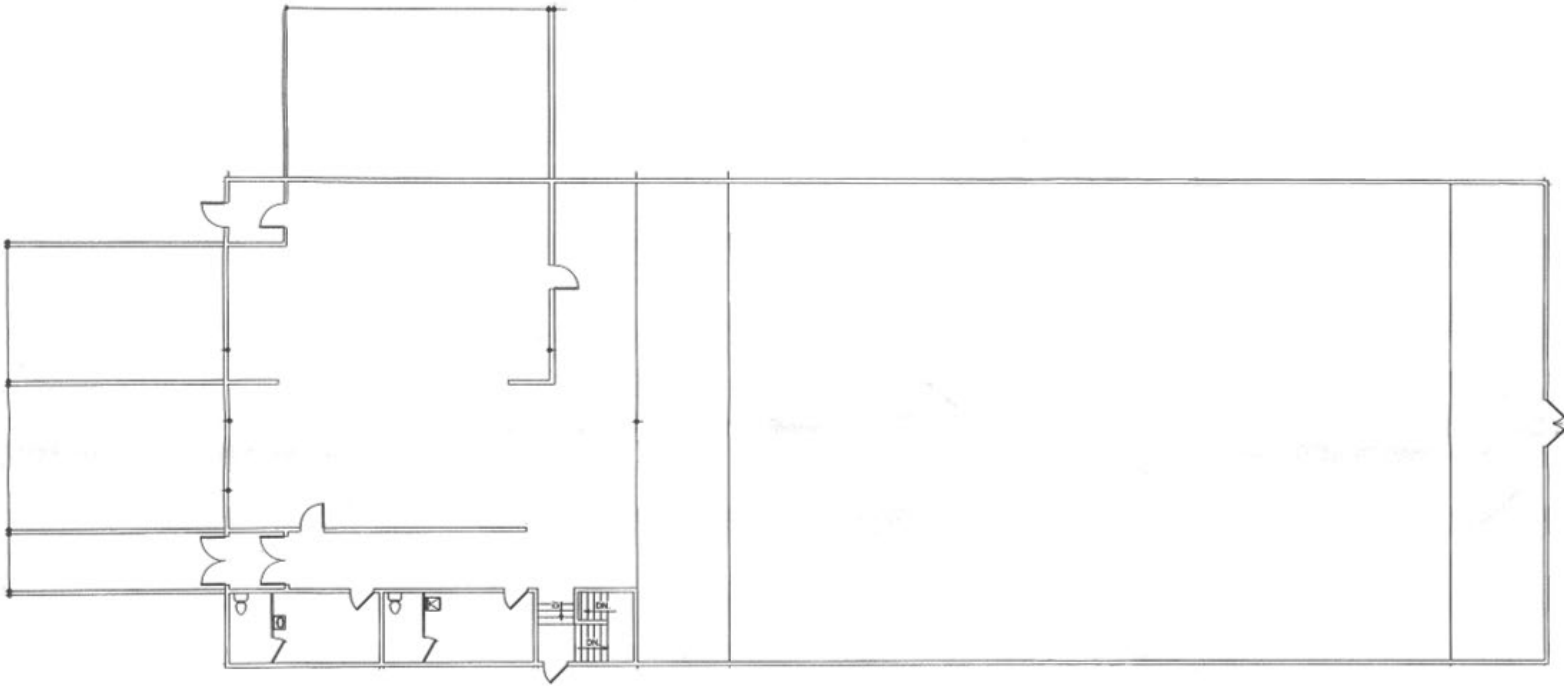


BEN BRUNO
Brokerage Services
651.621.2563
ben@terracegrouppllc.com

ERIC DUEHOLM
Partner
651.621.2550
eric@terracegrouppllc.com

Full Property Information at:
320knowles.com

Floorplan



Information is deemed reliable; however, no warranty or representation is made as to its accuracy or completeness. Property is subject to price change, prior sale or lease, and withdrawal from the market, all without notice.