

ARCADE SQUARE

P4
Realty Group

For Lease

**11324 ARCADE DRIVE
LITTLE ROCK, AR 72212**

SUITE 3 800 SF +/- \$1,233/mo

NNN LEASE

Base Rent \$15.00/sf/yr + Est. CAM \$3.50/sf/yr

SPACE HIGHLIGHTS

- Flexible layout with 2 private offices, a central sitting/waiting area, and an additional front room ideal for reception, workstations, or a conference area.
- Private restroom is located within the suite for added convenience.
- This space offers a practical flow for professional use - perfect for medical, counseling, legal, insurance, or general office operations - providing a strong mix of open and private areas for staff and client-facing needs.

GEORGE PETROV,
PRINCIPAL BROKER



www.p4realtygroup.com



george@p4realtygroup.com

O: 501/224-9600

C: 501/413-3664

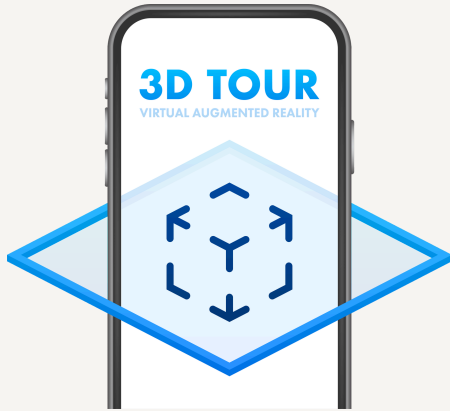
ARCADE SQUARE

11324 ARCADE DR., LITTLE ROCK, AR 72211

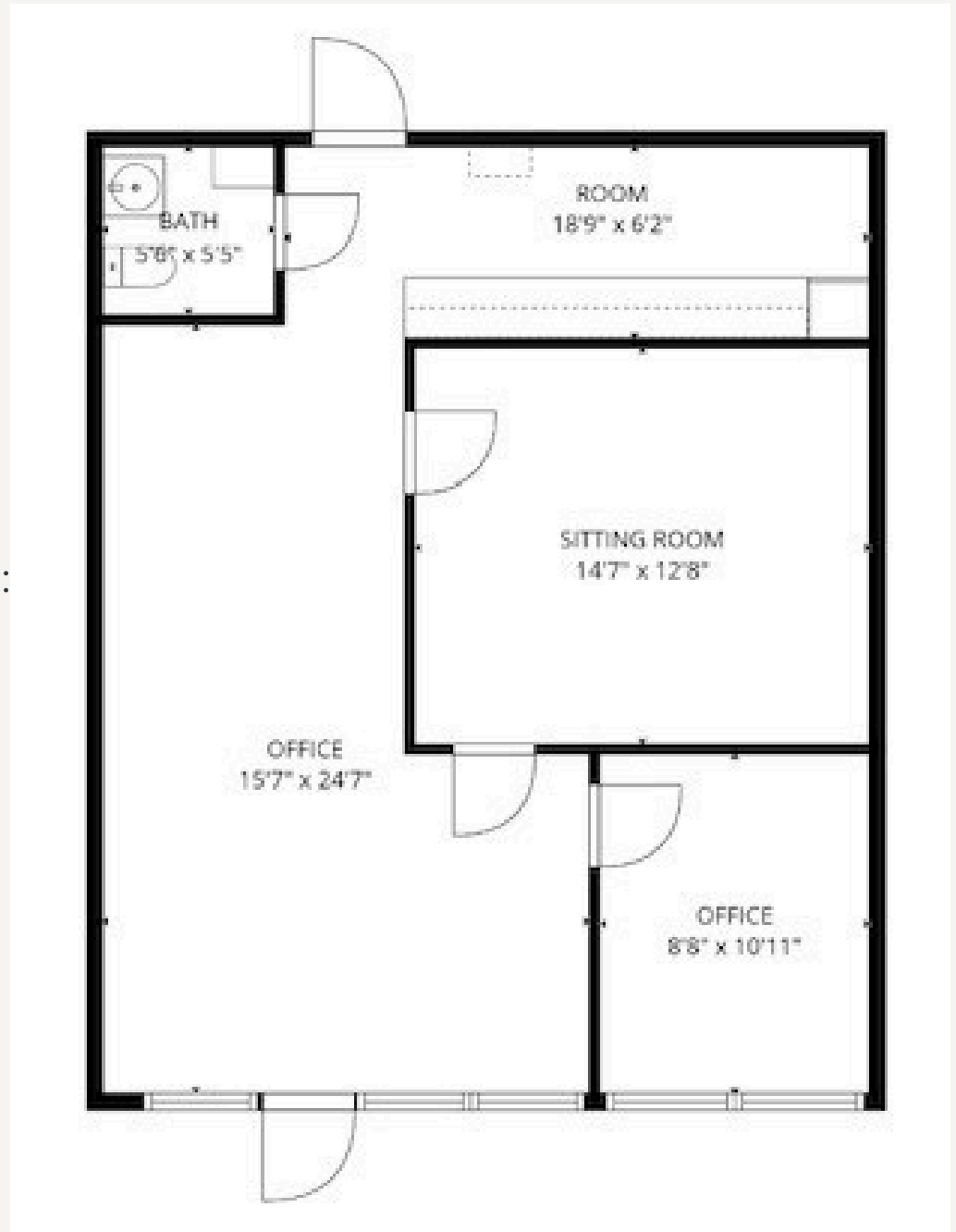
SUITE 3 - 800 SF +/-

Floor Plan

P4
Realty Group





Please visit our website:
P4realtygroup.com
for a 3D virtual tour.



Presented by:

George Petrov,
Principal Broker

501/224-9600 

george@p4realtygroup.com 

ARCADE SQUARE

11324 ARCADE DR., LITTLE ROCK, AR 72211
SUITE 3 - 800 SF +/-

P4
Realty Group



Nearby



Located at 11324 Arcade Drive, Arcade Square is conveniently located next to the Market Place Shopping Center, and less than 5 miles from The Promenade at Chenal. With easy access to I-430 and I-630, this centrally located property is ideal for businesses looking to thrive in a dynamic environment. Whether you're a startup or an established company looking to expand, this location offers the resources and environment needed for success. Don't miss out on this exceptional opportunity!