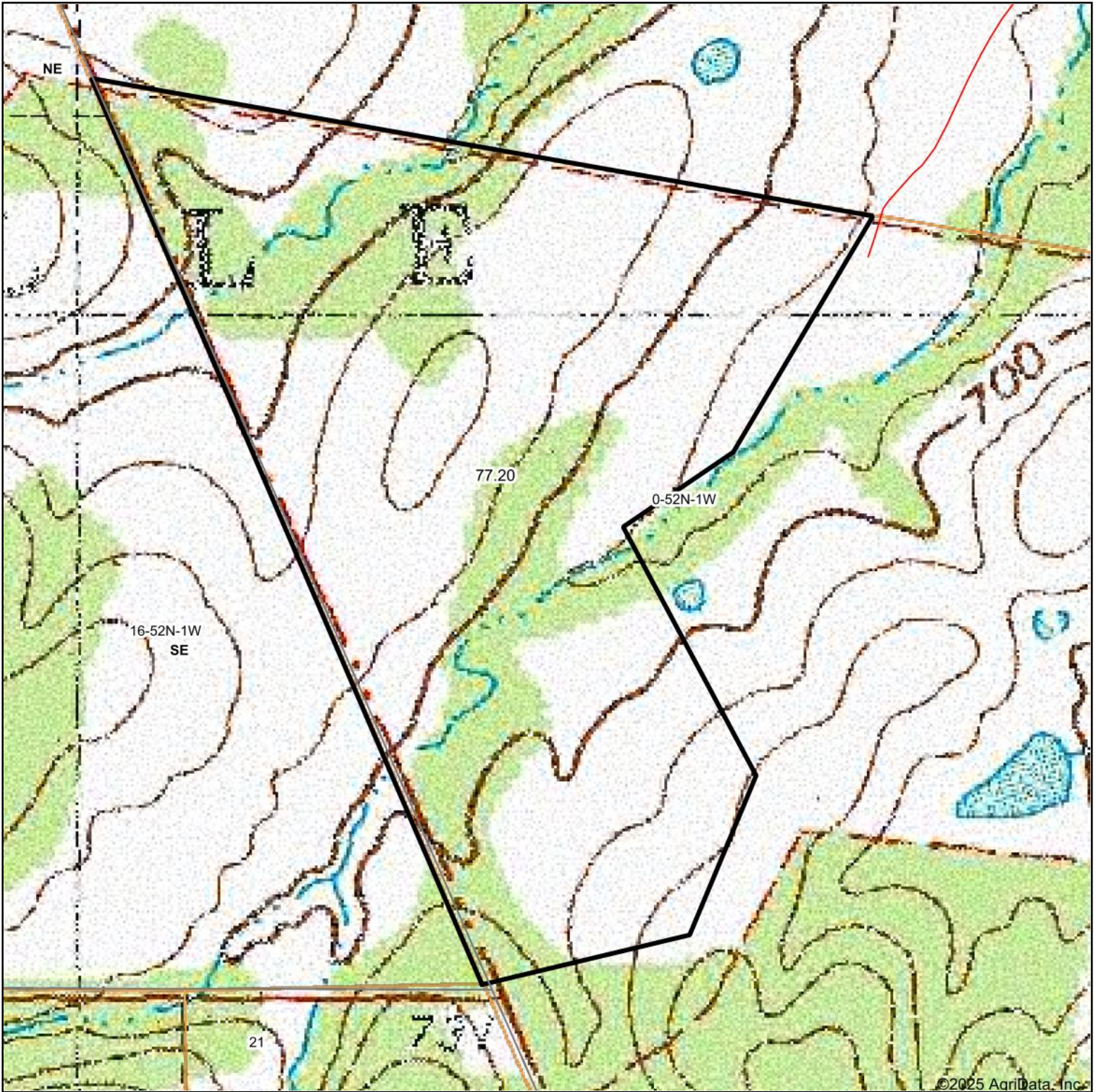
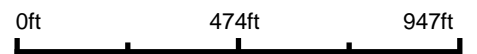


Topography Map



Map Center: 39° 16' 23.94, -91° 0' 45.99



MEYER & COMPANY
REAL ESTATE & AUCTIONS
BOUNDARY LINES
ARE APPROXIMATE

0-52N-1W
Pike County
Missouri



Maps Provided By:

CUSTOMIZED ONLINE MAPPING
© AgriData, Inc. 2025 www.AgriDataInc.com

11/19/2025