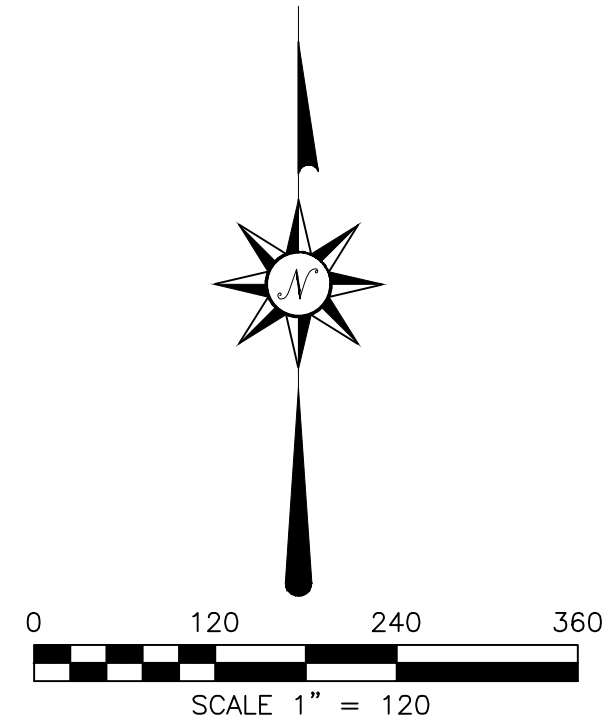


SURVEYED AREA

PHASE 1 LAND AREA:
1,142,827.51 Square Feet
26.236 Acres

PHASE 2 LAND AREA:
902,402.93 Square Feet
20.716 Acres

PHASE 3 LAND AREA:
859,138.24 Square Feet
19.723 Acres



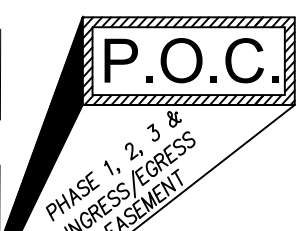
Line #	Length	Direction
E1	1943.30'	S88°41'21"E
E2	90.00'	N01°44'08"E
E3	327.27'	N01°44'08"E
E4	30.15'	N07°26'47"E
E5	1411.99'	N00°54'24"E
E6	54.00'	S88°20'38"E
E7	1412.06'	S00°54'24"W
E8	30.15'	S03°58'30"E
E9	326.83'	S01°44'08"W
E10	60.00'	N88°41'21"W

FLOOD DATA

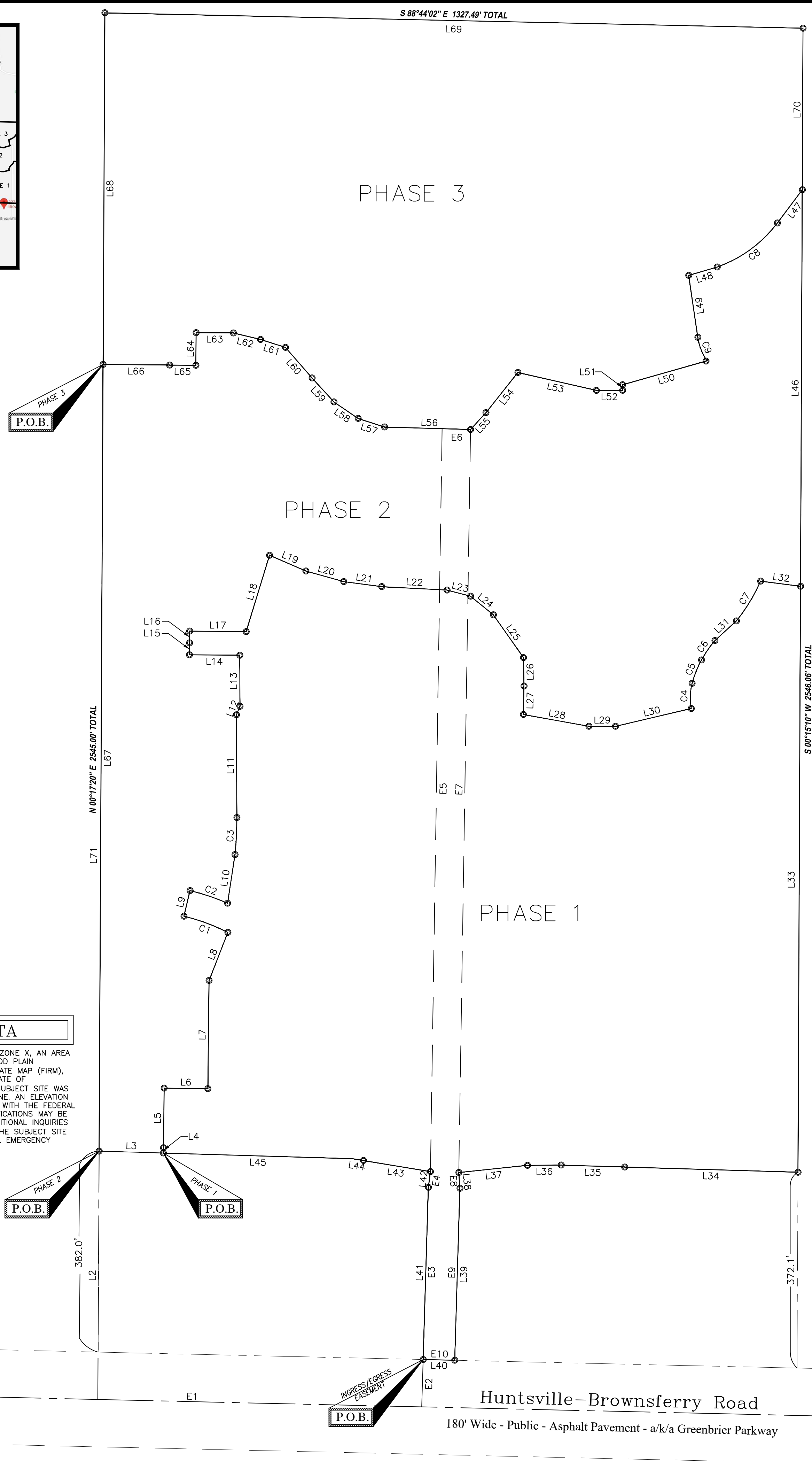
THE SUBJECT PROPERTY IS LOCATED IN ZONE X, AN AREA OUTSIDE THE 0.2% ANNUAL CHANCE FLOOD PLAIN ACCORDING TO THE FLOOD INSURANCE RATE MAP (FIRM), NO. 47113C0154E WITH AN EFFECTIVE DATE OF 08/03/2009. A FIELD SURVEY OF THE SUBJECT SITE WAS NOT PERFORMED TO DETERMINE THIS ZONE. AN ELEVATION CERTIFICATE COMPLETED IN ACCORDANCE WITH THE FEDERAL EMERGENCY MANAGEMENT AGENCY SPECIFICATIONS MAY BE REQUIRED TO DETERMINE THE ZONE. ADDITIONAL INQUIRIES CONCERNING THE FLOOD ZONE(S) FOR THE SUBJECT SITE SHOULD BE ADDRESSED TO THE FEDERAL EMERGENCY MANAGEMENT AGENCY.

Lindsay Lane
60' Wide - Public - Asphalt Pavement

Southwest Corner of
Southwest 1/4 of
Section 35, T3S, R4W
Limestone County, AL



Railroad Spike
Found in Asphalt



Line #	Length	Direction
L1	1327.51'	S88°41'21"E
L2	471.99'	N00°17'20"E
L3	122.10'	S88°15'52"E
L4	10.00'	N01°44'08"E
L5	113.24'	N00°38'18"E
L6	83.09'	S89°21'42"E
L7	205.61'	N00°38'18"E
L8	98.05'	N21°21'57"E
L9	50.00'	N13°26'09"E
L10	93.42'	N08°44'24"E
L11	195.43'	N00°13'39"W
L12	17.33'	N22°39'28"E
L13	97.16'	N00°10'42"W
L14	95.71'	N89°28'25"W
L15	22.50'	N00°31'35"E
L16	22.50'	N00°31'35"E
L17	107.30'	S89°28'25"E
L18	151.84'	N17°03'19"E
L19	75.27'	S66°33'33"E
L20	74.86'	S74°22'23"E
L21	72.78'	S82°26'04"E
L22	124.35'	S86°59'49"E
L23	46.11'	S75°18'28"E
L24	55.88'	S50°53'19"E
L25	99.56'	S35°08'40"E
L26	54.08'	S00°59'52"E
L27	54.07'	S01°20'08"W
L28	126.61'	S79°50'07"E
L29	50.69'	S89°58'39"E
L30	147.96'	N76°48'57"E
L31	55.45'	N47°36'25"E
L32	76.62'	S82°36'45"E
L33	1113.43'	S00°15'10"W
L34	329.63'	N88°15'52"W
L35	120.50'	N88°15'52"W
L36	64.24'	S89°34'34"W
L37	131.27'	S84°02'23"W
L38	30.15'	S03°58'30"E
L39	326.83'	S01°44'08"W
L40	60.00'	N88°41'21"W
L41	327.27'	N01°44'08"E
L42	30.15'	N07°26'47"E
L43	129.13'	N80°34'06"W
L44	20.22'	N80°34'06"W
L45	360.59'	N88°15'52"W
L46	753.46'	N00°15'10"E
L47	78.81'	S36°58'47"W
L48	56.47'	S73°35'38"W
L49	119.12'	S08°21'09"E
L50	166.74'	S74°11'46"W
L51	10.65'	S00°09'03"E
L52	50.00'	S89°50'57"W
L53	153.05'	N77°07'44"W
L54	97.52'	S38°26'49"W
L55	43.37'	S42°26'27"W
L56	163.70'	N88°20'38"W
L57	52.73'	N72°02'32"W
L58	55.58'	N55°38'14"W
L59	61.79'	N42°25'25"W
L60	76.94'	N41°03'59"W
L61	49.81'	N72°16'33"W
L62	52.84'	N76°33'21"W
L63	70.98'	N89°28'25"W
L64	62.11'	S00°31'35"W
L65	50.00'	N89°28'25"W
L66	126.30'	N89°28'17"W
L67	1494.77'	S00°17'20"W
L68	668.25'	N00°17'20"E
L69	1327.49'	S88°44'02"E
L70	307.04'	S00°15'10"W
L71	1966.76'	N00°17'20"E

LEGAL DESCRIPTION

PHASE 1
A tract or parcel of land lying in the Southwest Quarter (SW ¼) of Section 35, Township 3 South, Range 4 West of the Huntsville Meridian, Limestone County, Alabama, and being more particularly described as follows:
Commence at a railroad spike found at the Southwest corner of said Section 35; said point being at the centerline intersections of the Huntsville-Brownsferry Road and Lindsay Lane; thence S 88°41'21" E along the South boundary line of the SW ¼ of said Section 35 a distance of 1327.51 feet; thence N 00°17'20" E a distance of 471.99 feet; thence S 88°15'52" E a distance of 122.10 feet to the Point of Beginning of Phase 1; thence run N 01°44'08" E a distance of 10.00 feet; thence run N 00°38'18" E a distance of 113.24 feet; ; thence run S 89°21'42" E a distance of 83.09 feet; thence run N 00°38'18" E a distance of 205.61 feet; thence run N 01°44'08" E a distance of 98.05 feet to the point of a curve to the left having a radius of 375.00 feet, a delta of 13°37'57"; thence run along said curve an arc distance of 89.22 feet, said curve having a chord bearing of N 69°44'43" W and a chord distance of 89.01 feet; thence run N 13°26'09" E a distance of 50.00 feet to the point of a curve to the right having a radius of 425.00 feet, a delta of 10°09'09"; thence run along said curve an arc distance of 75.31 feet, said curve having a chord bearing of S 71°29'17" E and a chord distance of 75.21 feet; thence run N 08°44'24" E a distance of 93.42 feet to the point of a curve to the left having a radius of 655.82 feet, a delta of 6°08'31"; thence run along said curve an arc distance of 70.30 feet, said curve having a chord bearing of N 02°50'37" E and a chord distance of 70.27 feet; thence run N 00°13'39" W a distance of 195.43 feet; thence run N 22°39'28" E a distance of 17.33 feet; thence run N 00°10'42" W a distance of 97.16 feet; thence run N 89°28'25" W a distance of 95.71 feet; thence run N 00°31'35" E a distance of 22.50 feet; thence run N 00°31'35" E a distance of 22.50 feet; thence run S 82°26'04" E a distance of 107.30 feet; thence run N 17°03'19" E a distance of 151.84 feet; thence run S 86°59'49" E a distance of 124.35 feet; thence run S 75°18'28" E a distance of 46.11 feet; thence run S 50°53'19" E a distance of 55.88 feet; thence run S 35°08'40" E a distance of 99.56 feet; thence run S 00°59'52" E a distance of 54.08 feet; thence run S 01°20'08" W a distance of 54.07 feet; thence run S 79°50'07" E a distance of 126.61 feet; thence run S 89°58'39" E a distance of 50.69 feet; thence run N 76°48'57" E a distance of 147.96 feet to the point of a curve to the right having a radius of 110.00 feet, a delta of 25°04'26"; thence run along said curve an arc distance of 48.14 feet, said curve having a chord bearing of N 01°45'57" E and a chord distance of 47.76 feet, to the point of a curve to the right having a radius of 206.83 feet, a delta of 13°21'10"; thence run along said curve an arc distance of 48.20 feet, said curve having a chord bearing of N 21°53'28" E and a chord distance of 48.09 feet, to the point of a curve to the right having a radius of 210.00 feet, a delta of 12°11'29"; thence run along said curve an arc distance of 44.68 feet, said curve having a chord bearing of N 34°36'34" E and a chord distance of 44.60 feet; thence run N 47°36'25" E a distance of 55.45 feet to the point of a curve to the left having a radius of 335.00 feet, a delta of 15°11'12"; thence run along said curve an arc distance of 88.79 feet, said curve having a chord bearing of N 31°17'46" E and a chord distance of 88.53 feet; thence run N 82°36'45" E a distance of 76.62 feet; thence run S 00°15'10" W a distance of 1113.43 feet; thence run N 88°15'52" W a distance of 329.63 feet; thence run N 88°15'52" W a distance of 120.50 feet; thence run S 89°34'34" W a distance of 64.24 feet; thence run S 84°02'23" W a distance of 131.27 feet; thence run S 03°58'30" E a distance of 30.15 feet; thence run S 01°44'08" W a distance of 326.83 feet; thence run N 88°41'21" W a distance of 60.00 feet; thence run N 01°44'08" E a distance of 327.27 feet; thence run N 07°26'47" E a distance of 30.15 feet; thence run N 80°34'06" W a distance of 129.13 feet; thence run N 80°34'06" W a distance of 20.22 feet; thence run N88°15'52" W a distance of 360.59 feet to the Point of Beginning, having an area of 1,142,827.51± square feet or 26.236± acres.

PHASE 2
A tract or parcel of land lying in the Southwest Quarter (SW ¼) of Section 35, Township 3 South, Range 4 West of the Huntsville Meridian, Limestone County, Alabama, and being more particularly described as follows:
Commence at a railroad spike found at the Southwest corner of said Section 35; said point being at the centerline intersections of the Huntsville-Brownsferry Road and Lindsay Lane; thence S 88°41'21" E along the South boundary line of the SW ¼ of said Section 35 a distance of 1327.51 feet; thence N 00°17'20" E a distance of 471.99 feet to the Point of Beginning of Phase 2; thence S 88°15'52" E a distance of 122.10 feet; thence run N 01°44'08" E a distance of 10.00 feet; thence run N 00°38'18" E a distance of 113.24 feet; ; thence run S 89°21'42" E a distance of 83.09 feet; thence run N 00°38'18" E a distance of 205.61 feet; thence run N 01°44'08" E a distance of 98.05 feet to the point of a curve to the left having a radius of 375.00 feet, a delta of 13°37'57"; thence run along said curve an arc distance of 89.22 feet, said curve having a chord bearing of N 69°44'43" W and a chord distance of 89.01 feet; thence run N 13°26'09" E a distance of 50.00 feet to the point of a curve to the right having a radius of 425.00 feet, a delta of 10°09'09"; thence run along said curve an arc distance of 75.31 feet, said curve having a chord bearing of S 71°29'17" E and a chord distance of 75.21 feet; thence run N 08°44'24" E a distance of 93.42 feet to the point of a curve to the left having a radius of 655.82 feet, a delta of 6°08'31"; thence run along said curve an arc distance of 70.30 feet, said curve having a chord bearing of N 02°50'37" E and a chord distance of 70.27 feet; thence run N 00°13'39" W a distance of 195.43 feet; thence run N 22°39'28" E a distance of 17.33 feet; thence run N 00°10'42" W a distance of 97.16 feet; thence run N 89°28'25" W a distance of 95.71 feet; thence run N 00°31'35" E a distance of 22.50 feet; thence run N 00°31'35" E a distance of 22.50 feet; thence run S 82°26'04" E a distance of 107.30 feet; thence run N 17°03'19" E a distance of 151.84 feet; thence run S 86°59'49" E a distance of 124.35 feet; thence run S 75°18'28" E a distance of 46.11 feet; thence run S 50°53'19" E a distance of 55.88 feet; thence run S 35°08'40" E a distance of 99.56 feet; thence run S 00°59'52" E a distance of 54.08 feet; thence run S 01°20'08" W a distance of 54.07 feet; thence run S 79°50'07" E a distance of 126.61 feet; thence run S 89°58'39" E a distance of 50.69 feet; thence run N 76°48'57" E a distance of 147.96 feet to the point of a curve to the right having a radius of 110.00 feet, a delta of 25°04'26"; thence run along said curve an arc distance of 48.14 feet, said curve having a chord bearing of N 01°45'57" E and a chord distance of 47.76 feet, to the point of a curve to the right having a radius of 206.83 feet, a delta of 13°21'10"; thence run along said curve an arc distance of 48.20 feet, said curve having a chord bearing of N 21°53'28" E and a chord distance of 48.09 feet, to the point of a curve to the right having a radius of 210.00 feet, a delta of 12°11'29"; thence run along said curve an arc distance of 44.68 feet, said curve having a chord bearing of N 34°36'34" E and a chord distance of 44.60 feet; thence run N 47°36'25" E a distance of 55.45 feet to the point of a curve to the left having a radius of 335.00 feet, a delta of 15°11'12"; thence run along said curve an arc distance of 88.79 feet, said curve having a chord bearing of N 31°17'46" E and a chord distance of 88.53 feet; thence run N 82°36'45" E a distance of 76.62 feet; thence run S 00°15'10" W a distance of 1113.43 feet; thence run N 88°15'52" W a distance of 329.63 feet; thence run N 88°15'52" W a distance of 120.50 feet; thence run S 89°34'34" W a distance of 64.24 feet; thence run S 84°02'23" W a distance of 131.27 feet; thence run S 03°58'30" E a distance of 30.15 feet; thence run S 01°44'08" W a distance of 326.83 feet; thence run N 88°41'21" W a distance of 60.00 feet; thence run N 01°44'08" E a distance of 327.27 feet; thence run N 07°26'47" E a distance of 30.15 feet; thence run N 80°34'06" W a distance of 129.13 feet; thence run N 80°34'06" W a distance of 20.22 feet; thence run N88°15'52" W a distance of 360.59 feet to the Point of Beginning, having an area of 902,402.93± square feet or 20.716± acres.

PHASE 3
A tract or parcel of land lying in the Southwest Quarter (SW ¼) of Section 35, Township 3 South, Range 4 West of the Huntsville Meridian, Limestone County, Alabama, and being more particularly described as follows:
Commence at a railroad spike found at the Southwest corner of said Section 35; said point being at the centerline intersections of the Huntsville-Brownsferry Road and Lindsay Lane; thence S 88°41'21" E along the South boundary line of the SW ¼ of said Section 35 a distance of 1327.51 feet; thence N 00°17'20" E a distance of 471.99 feet to the Point of Beginning of Phase 3; thence N 00°17'20" E a distance of 122.10 feet; thence run N 01°44'08" E a distance of 10.00 feet; thence run N 00°38'18" E a distance of 113.24 feet; ; thence run S 89°21'42" E a distance of 83.09 feet; thence run N 00°38'18" E a distance of 205.61 feet; thence run N 01°44'08" E a distance of 98.05 feet to the point of a curve to the left having a radius of 375.00 feet, a delta of 13°37'57"; thence run along said curve an arc distance of 89.22 feet, said curve having a chord bearing of N 69°44'43" W and a chord distance of 89.01 feet; thence run N 13°26'09" E a distance of 50.00 feet to the point of a curve to the right having a radius of 425.00 feet, a delta of 10°09'09"; thence run along said curve an arc distance of 75.31 feet, said curve having a chord bearing of S 71°29'17" E and a chord distance of 75.21 feet; thence run N 08°44'24" E a distance of 93.42 feet to the point of a curve to the left having a radius of 655.82 feet, a delta of 6°08'31"; thence run along said curve an arc distance of 70.30 feet, said curve having a chord bearing of N 02°50'37" E and a chord distance of 70.27 feet; thence run N 00°13'39" W a distance of 195.43 feet; thence run N 22°39'28" E a distance of 17.33 feet; thence run N 00°10'42" W a distance of 97.16 feet; thence run N 89°28'25" W a distance of 95.71 feet; thence run N 00°31'35" E a distance of 22.50 feet; thence run N 00°31'35" E a distance of 22.50 feet; thence run S 82°26'04" E a distance of 107.30 feet; thence run N 17°03'19" E a distance of 151.84 feet; thence run S 86°59'49" E a distance of 124.35 feet; thence run S 75°18'28" E a distance of 46.11 feet; thence run S 50°53'19" E a distance of 55.88 feet; thence run S 35°08'40" E a distance of 99.56 feet; thence run S 00°59'52" E a distance of 54.08 feet; thence run S 01°20'08" W a distance of 54.07 feet; thence run S 79°50'07" E a distance of 126.61 feet; thence run S 89°58'39" E a distance of 50.69 feet; thence run N 76°48'57" E a distance of 147.96 feet to the point of a curve to the right having a radius of 110.00 feet, a delta of 25°04'26"; thence run along said curve an arc distance of 48.14 feet, said curve having a chord bearing of N 01°45'57" E and a chord distance of 47.76 feet, to the point of a curve to the right having a radius of 206.83 feet, a delta of 13°21'10"; thence run along said curve an arc distance of 48.20 feet, said curve having a chord bearing of N 21°53'28" E and a chord distance of 48.09 feet, to the point of a curve to the right having a radius of 210.00 feet, a delta of 12°11'29"; thence run along said curve an arc distance of 44.68 feet, said curve having a chord bearing of N 34°36'34" E and a chord distance of 44.60 feet; thence run N 47°36'25" E a distance of 55.45 feet to the point of a curve to the left having a radius of 335.00 feet, a delta of 15°11'12"; thence run along said curve an arc distance of 88.79 feet, said curve having a chord bearing of N 31°17'46" E and a chord distance of 88.53 feet; thence run N 82°36'45" E a distance of 76.62 feet; thence run S 00°15'10" W a distance of 1113.43 feet; thence run N 88°15'52" W a distance of 329.63 feet; thence run N 88°15'52" W a distance of 120.50 feet; thence run S 89°34'34" W a distance of 64.24 feet; thence run S 84°02'23" W a distance of 131.27 feet; thence run S 03°58'30" E a distance of 30.15 feet; thence run S 01°44'08" W a distance of 326.83 feet; thence run N 88°41'21" W a distance of 60.00 feet; thence run N 01°44'08" E a distance of 327.27 feet; thence run N 07°26'47" E a distance of 30.15 feet; thence run N 80°34'06" W a distance of 129.13 feet; thence run N 80°34'06" W a distance of 20.22 feet; thence run N88°15'52" W a distance of 360.59 feet to the Point of Beginning, having an area of 859,138.24± square feet or 19.723± acres.

PHASE 4
A tract or parcel of land lying in the Southwest Quarter (SW ¼) of Section 35, Township 3 South, Range 4 West of the Huntsville Meridian, Limestone County, Alabama, and being more particularly described as follows:
Commence at a railroad spike found at the Southwest corner of said Section 35; said point being at the centerline intersections of the Huntsville-Brownsferry Road and Lindsay Lane; thence S 88°41'21" E along the South boundary line of the SW ¼ of said Section 35 a distance of 1327.51 feet; thence N 00°17'20" E a distance of 471.99 feet to the Point of Beginning of Phase 4; thence N 00°17'20" E a distance of 122.10 feet; thence run N 01°44'08" E a distance of 10.00 feet; thence run N 00°38'18" E a distance of 113.24 feet; ; thence run S 89°21'42" E a distance of 83.09 feet; thence run N 00°38'18" E a distance of 205.61 feet; thence run N 01°44'08" E a distance of 98.05 feet to the point of a curve to the left having a radius of 375.00 feet, a delta of 13°37'57"; thence run along said curve an arc distance of 89.22 feet, said curve having a chord bearing of N 69°44'43" W and a chord distance of 89.01 feet; thence run N 13°26'09" E a distance of 50.00 feet to the point of a curve to the right having a radius of 425.00 feet, a delta of 10°09'09"; thence run along said curve an arc distance of 75.31 feet, said curve having a chord bearing of S 71°29'17" E and a chord distance of 75.21 feet; thence run N 08°44'24" E a distance of 93.42 feet to the point of a curve to the left having a radius of 655.82 feet, a delta of 6°08'31"; thence run along said curve an arc distance of 70.30 feet, said curve having a chord bearing of N 02°50'37" E and a chord distance of 70.27 feet; thence run N 00°13'39" W a distance of 195.43 feet; thence run N 22°39'28" E a distance of 17.33 feet; thence run N 00°10'42" W a distance of 97.16 feet; thence run N 89°28'25" W a distance of 95.71 feet; thence run N 00°31'35" E a distance of 22.50 feet; thence run N 00°31'35" E a distance of 22.50 feet; thence run S 82°26'04" E a distance of 107.30 feet; thence run N 17°03'19" E a distance of 151.84 feet; thence run S 86°59'49" E a distance of 124.35 feet; thence run S 75°18'28" E a distance of 46.11 feet; thence run S 50°53'19" E a distance of 55.88 feet; thence run S 35°08'40" E a distance of 99.56 feet; thence run S 00°59'52" E a distance of 54.08 feet; thence run S 01°20'08" W a distance of 54.07 feet; thence run S 79°50'07" E a distance of 126.61 feet; thence run S 89°58'39" E a distance of 50.69 feet; thence run N 76°48'57" E a distance of 147.96 feet to the point of a curve to the right having a radius of 110.00 feet, a delta of 25°04'26"; thence run along said curve an arc distance of 48.14 feet, said curve having a chord bearing of N 01°45'57" E and a chord distance of 47.76 feet, to the point of a curve to the right having a radius of 206.83 feet, a delta of 13°21'10"; thence run along said curve an arc distance of 48.20 feet, said curve having a chord bearing of N 21°53'28" E and a chord distance of 48.09 feet, to the point of a curve to the right having a radius of 210.00 feet, a delta of 12°11'29"; thence run along said curve an arc distance of 44.68 feet, said curve having a chord bearing of N 34°36'34" E and a chord distance of 44.60 feet; thence run N 47°36'25" E a distance of 55.45 feet to the point of a curve to the left having a radius of 335.00 feet, a delta of 15°11'12"; thence run along said curve an arc distance of 88.79 feet, said curve having a chord bearing of N 31°17'46" E and a chord distance of 88.53 feet; thence run N 82°36'45" E a distance of 76.62 feet; thence run S 00°15'10" W a distance of 1113.43 feet; thence run N 88°15'52" W a distance of 329.63 feet; thence run N 88°15'52" W a distance of 120.50 feet; thence run S 89°34'34" W a distance of 64.24 feet; thence run S 84°02'23" W a distance of 131.27 feet; thence run S 03°58'30" E a distance of 30.15 feet; thence run S 01°44'08" W a distance of 326.83 feet; thence run N 88°41'21" W a distance of 60.00 feet; thence run N 01°44'08" E a distance of 327.27 feet; thence run N 07°26'47" E a distance of 30.15 feet; thence run N 80°34'06" W a distance of 129.13 feet; thence run N 80°34'06" W a distance of 20.22 feet; thence run N88°15'52" W a distance of 360.59 feet to the Point of Beginning, having an area of 902,402.93± square feet or 20.716± acres.

INGRESS/EGRESS EASEMENT
A tract or parcel of land lying in the Southwest Quarter (SW ¼) of Section 35, Township 3 South, Range 4 West of the Huntsville Meridian, Limestone County, Alabama, and being more particularly described as follows:
Commence at a railroad spike found at the Southwest corner of said Section 35; said point being at the centerline intersections of the Huntsville-Brownsferry Road and Lindsay Lane; thence S 88°41'21" E along the South boundary line of the SW ¼ of said Section 35 a distance of 1327.51 feet; thence N 00°17'20" E a distance of 471.99 feet to the Point of Beginning of Phase 3; thence N 00°17'20" E a distance of 122.10 feet; thence run N 01°44'08" E a distance of 10.00 feet; thence run N 00°38'18" E a distance of 113.24 feet; ; thence run S 89°21'42" E a distance of 83.09 feet; thence run N 00°38'18" E a distance of 205.61 feet; thence run N 01°44'08" E a distance of 98.05 feet to the point of a curve to the left having a radius of 375.00 feet, a delta of 13°37'57"; thence run along said curve an arc distance of 89.22 feet, said curve having a chord bearing of N 69°44'43" W and a chord distance of 89.01 feet; thence run N 13°26'09" E a distance of 50.00 feet to the point of a curve to the right having a radius of 425.00 feet, a delta of 10°09'09"; thence run along said curve an arc distance of 75.31 feet, said curve having a chord bearing of S 71°29'17" E and a chord distance of 75.21 feet; thence run N 08°44'24" E a distance of 93.42 feet to the point of a curve to the left having a radius of 655.82 feet, a delta of 6°08'31"; thence run along said curve an arc distance of 70.30 feet, said curve having a chord bearing of N 02°50'37" E and a chord distance of 70.27 feet; thence run N 00°13'39" W a distance of 195.43 feet; thence run N 22°39'28" E a distance of 17.33 feet; thence run N 00°10'42" W a distance of 97.16 feet; thence run N 89°28'25" W a distance of 95.71 feet; thence run N 00°31'35" E a distance of 22.50 feet; thence run N 00°31'35" E a distance of 22.50 feet; thence run S 82°26'04" E a distance of 1