



ONE & TWO RAVINIA

**FOUR FULL FLOORS OF SPEC SUITES
DELIVERING SUMMER OF 2026**





ONE & TWO
RAVINIA

AVAILABLE SPEC SUITES

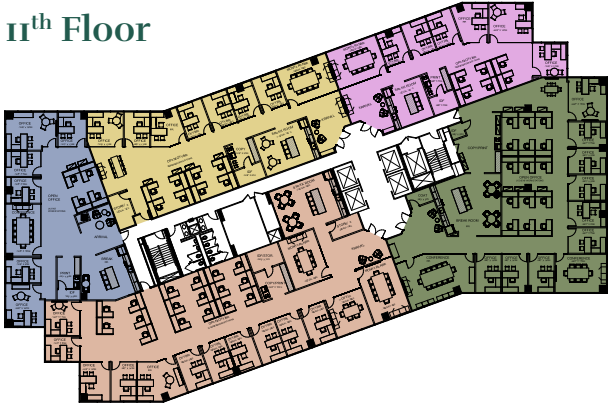


FOUR FULL FLOORS OF SPEC SUITES

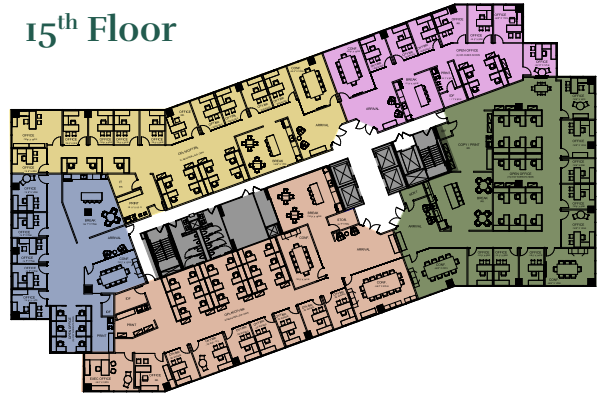
3,300 - 7,300 RSF

DELIVERING SUMMER OF 2026

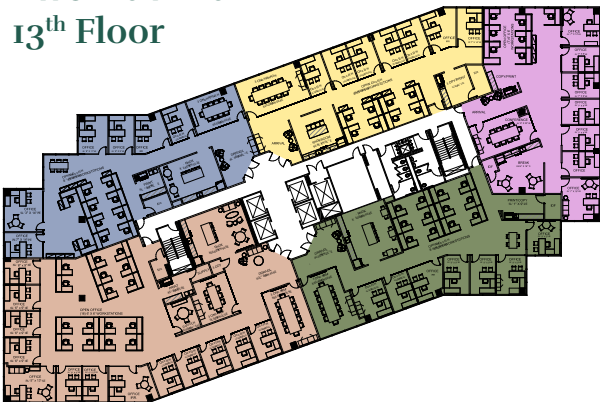
One Ravinia
11th Floor



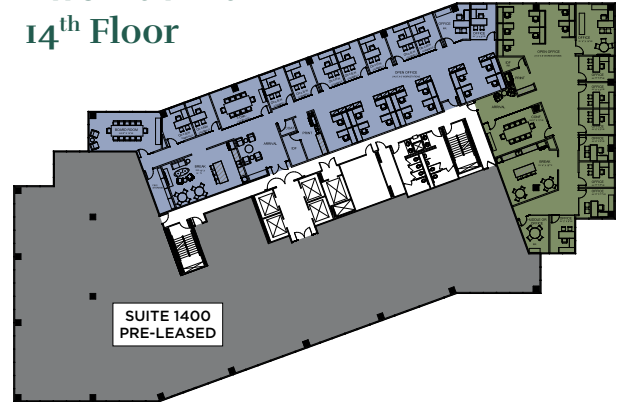
One Ravinia
15th Floor



Two Ravinia
13th Floor



Two Ravinia
14th Floor





ONE RAVINIA

11th Floor

SUITE 1130
3,533 RSF

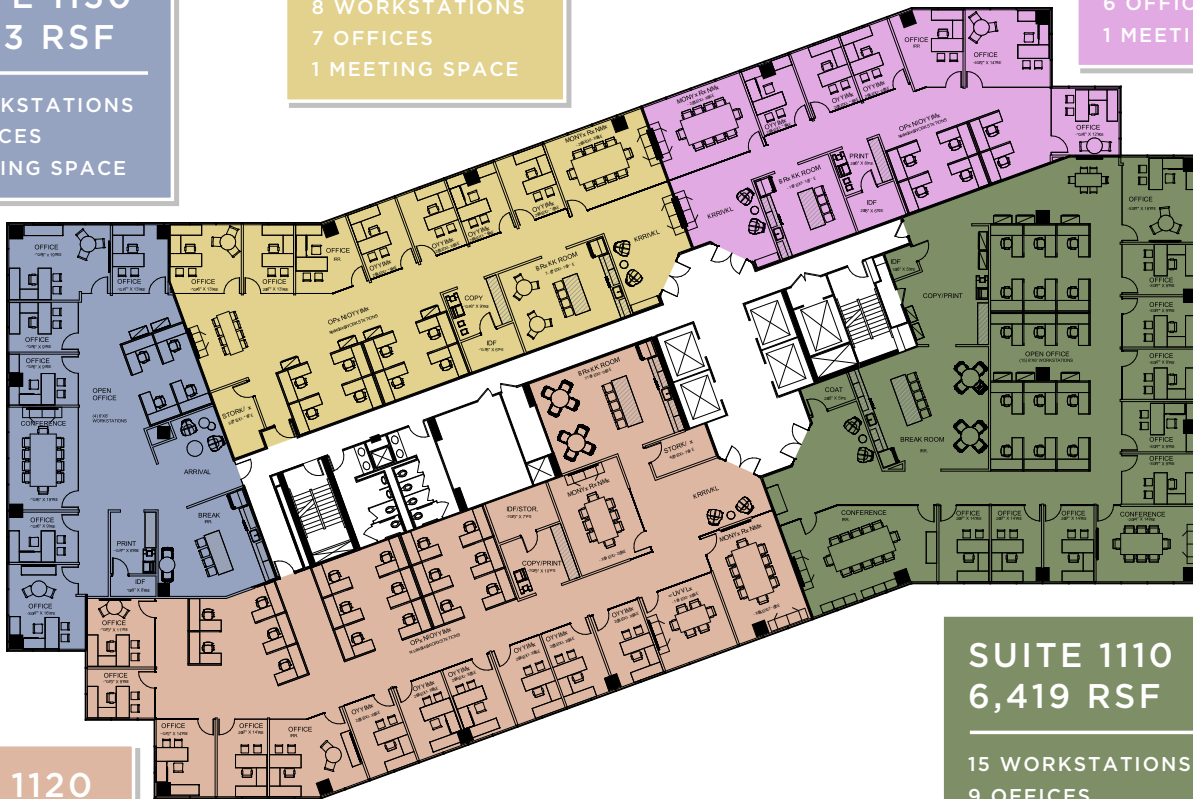
4 WORKSTATIONS
6 OFFICES
1 MEETING SPACE

SUITE 1140
4,328 RSF

8 WORKSTATIONS
7 OFFICES
1 MEETING SPACE

SUITE 1100
3,369 RSF

6 WORKSTATIONS
6 OFFICES
1 MEETING SPACE



SUITE 1120
6,994 RSF

17 WORKSTATIONS
11 OFFICES
3 MEETING SPACES

SUITE 1110
6,419 RSF

15 WORKSTATIONS
9 OFFICES
2 MEETING SPACES



ONE RAVINIA

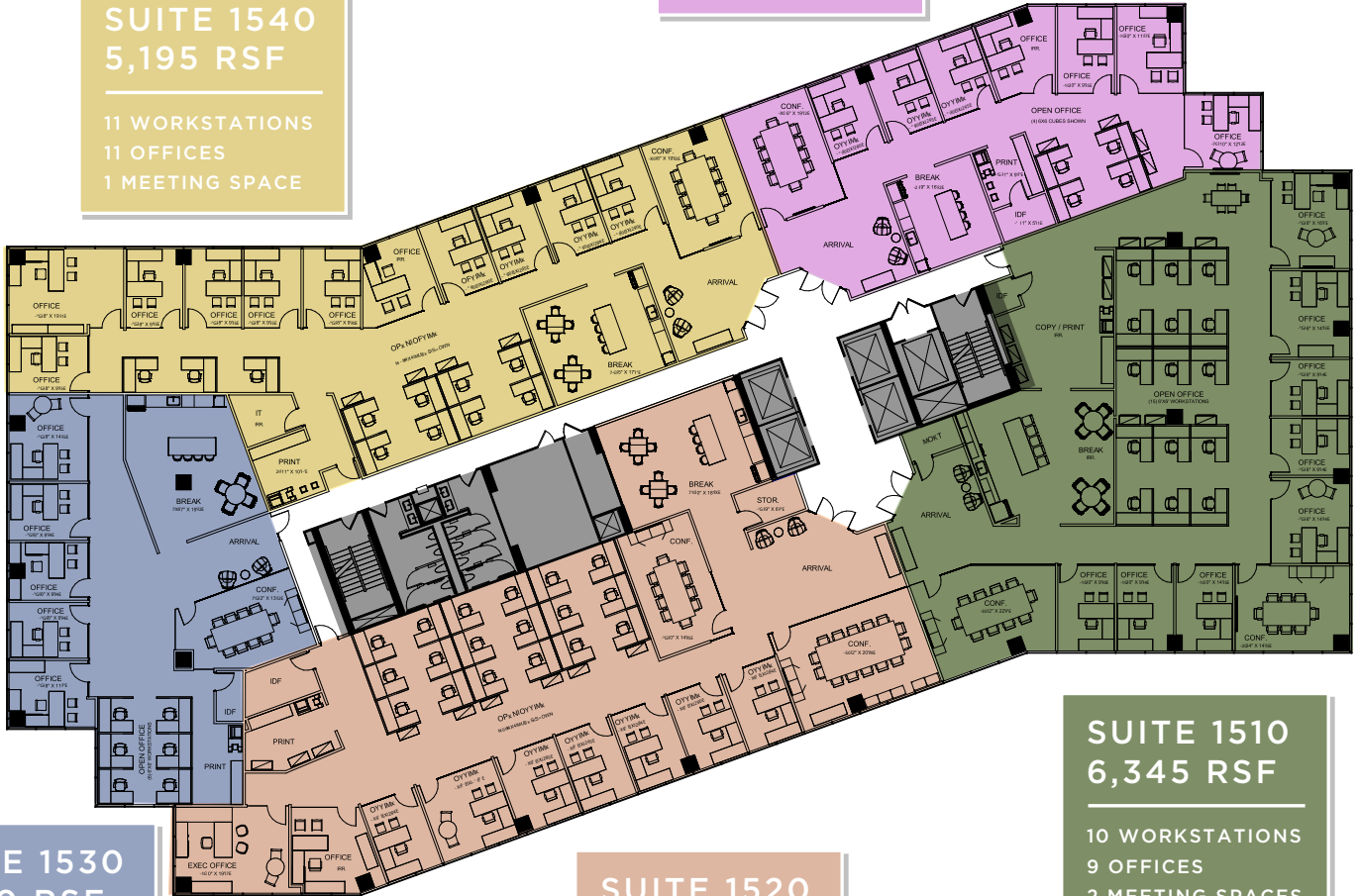
15th Floor

SUITE 1500
3,305 RSF

4 WORKSTATIONS
7 OFFICES
1 MEETING SPACE

SUITE 1540
5,195 RSF

11 WORKSTATIONS
11 OFFICES
1 MEETING SPACE



SUITE 1530
3,350 RSF

7 WORKSTATIONS
5 OFFICES
1 MEETING SPACE

SUITE 1520
6,965 RSF

18 WORKSTATIONS
9 OFFICES
2 MEETING SPACES

SUITE 1510
6,345 RSF

10 WORKSTATIONS
9 OFFICES
2 MEETING SPACES



TWO RAVINIA

13th Floor

SUITE 1340
4,429 RSF

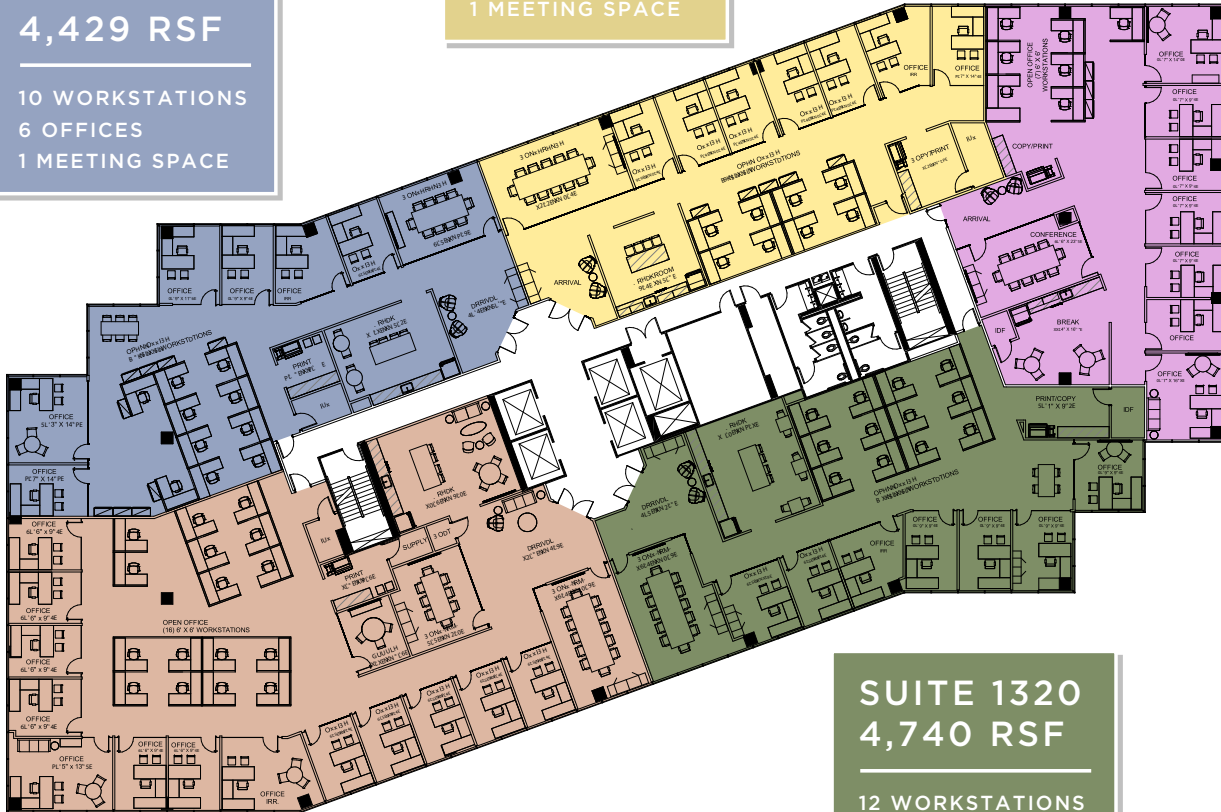
10 WORKSTATIONS
6 OFFICES
1 MEETING SPACE

SUITE 1300
4,065 RSF

8 WORKSTATIONS
7 OFFICES
1 MEETING SPACE

SUITE 1310
4,059 RSF

7 WORKSTATIONS
7 OFFICES
1 MEETING SPACE



SUITE 1330
7,441 RSF

16 WORKSTATIONS
13 OFFICES
3 MEETING SPACES

SUITE 1320
4,740 RSF

12 WORKSTATIONS
7 OFFICES
1 MEETING SPACE



TWO RAVINIA

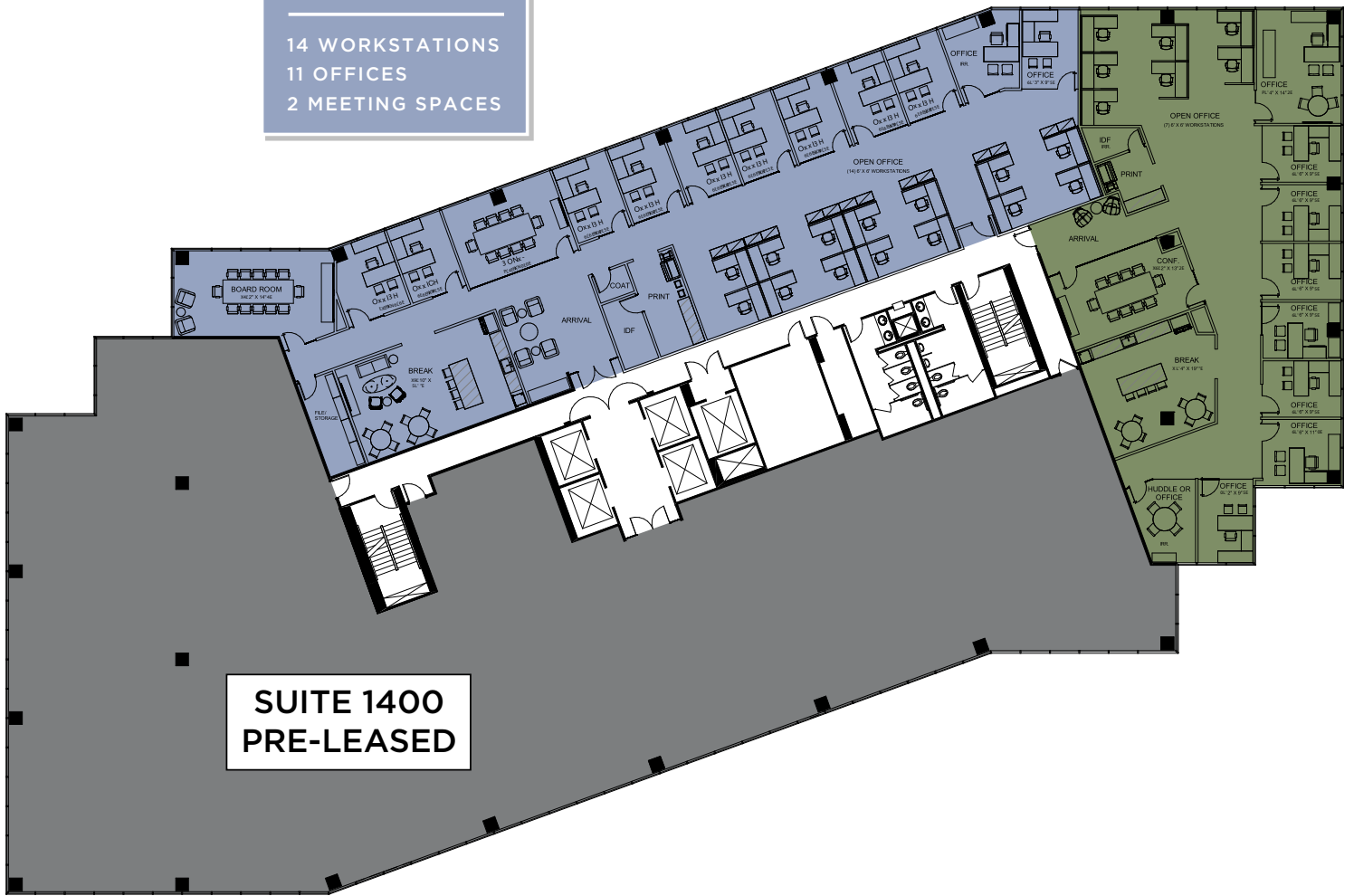
14th Floor

SUITE 1410
6,479 RSF

14 WORKSTATIONS
11 OFFICES
2 MEETING SPACES

SUITE 1420
4,673 RSF

7 WORKSTATIONS
8 OFFICES
2 MEETING SPACES



SUITE 1400
PRE-LEASED



FOR LEASING INFORMATION, PLEASE CONTACT:

GLENN KOLKER

Managing Director

404.962.8630

glenn.kolker@streamrealty.com

PRESTON MENNING

Managing Director

404.962.8609

preston.menning@streamrealty.com

LAUREN SLAPPEY

Associate

404.962.8639

lauren.slappsey@streamrealty.com



RaviniaDrive.com

ONE & TWO RAVINIA DRIVE
ATLANTA, 30346

