



Keegan & Coppin
COMPANY, INC.

FOR LEASE

PRIME DOWNTOWN OFFICE SPACE
50 SANTA ROSA AVE.
SANTA ROSA, CA

SANTA ROSA'S CENTRAL
BUSINESS DISTRICT



Go beyond broker.

REPRESENTED BY:

DAVE PETERSON, PARTNER

LIC # 01280039 (707) 528-1400, EXT 210

DPETERSON@KEEGANCOPPIN.COM



DOWNTOWN OFFICE SPACE
50 SANTA ROSA AVENUE
SANTA ROSA, CA

BEST
DOWNTOWN
VIEWS

PRIME DOWNTOWN OFFICE SPACE FOR LEASE

PROPERTY INFORMATION

Space Size 441+/- to 7,784+/- sq. ft.

Lease Rate \$1.75 psf Full Service

Lease Terms 3-5 year term

Zoning Downtown Commercial

Parking Downtown Parking District

Total Bldg SF 38,440+/- sq. ft.

AVAILABLE OFFICES

FLOOR	SUITE	SIZE
1 st	Suite 100:	3,941+/- sf
	Suite 110:	1,616+/- sf
2 nd	Suite 210:	2,825+/- sf*
	Suite 220:	1,123+/- sf*
	Suite 230:	1,421+/- sf*
	Suite 240:	1,515+/- sf*
* Suites can be combined for 2,544sf, 2,936sf or 4,059sf		
3 rd	Suite 330:	857+/- sf
	Suite 370:	1,205+/- sf
	Suite 380:	441+/- sf
5 th	Suite 500:	7,784+/- sf

DESCRIPTION OF AREA

Located in the heart of Downtown Santa Rosa and is centrally located near the City's best restaurants and largest banks. Walking distance from Hyatt Vineyard Creek Hotel, Spa, and Convention Center, Sonoma County Bar Association, U.S. Bankruptcy Court, State Government Building, retail Shopping, and theaters. Conveniently located near major public transportation and Highway 101, offering easy access for both employees and clients.

AREA MAP



DESCRIPTION OF PREMISES

Downtown district office building, with recently re-modeled main lobby and corridors. Window lines offer natural lighting and views of downtown.

HIGHLIGHTS

- 3rd Floor Common-Area Conference Room
- Located in Santa Rosa's Central Business District
- Walking distance to restaurants, retail stores and parking garages
- Conveniently located next to public transportation hub and Highway 101

REPRESENTED BY: **DAVE PETERSON, PARTNER**
KEEGAN & COPPIN CO., INC.
 LIC # 01280039 (707) 528-1400, EXT 210
 DPETERSON@KEEGANCOPPIN.COM

The above information, while not guaranteed, has been secured from sources we believe to be reliable. Submitted subject to error, change or withdrawal. An interested party should verify the status of the property and the information herein.



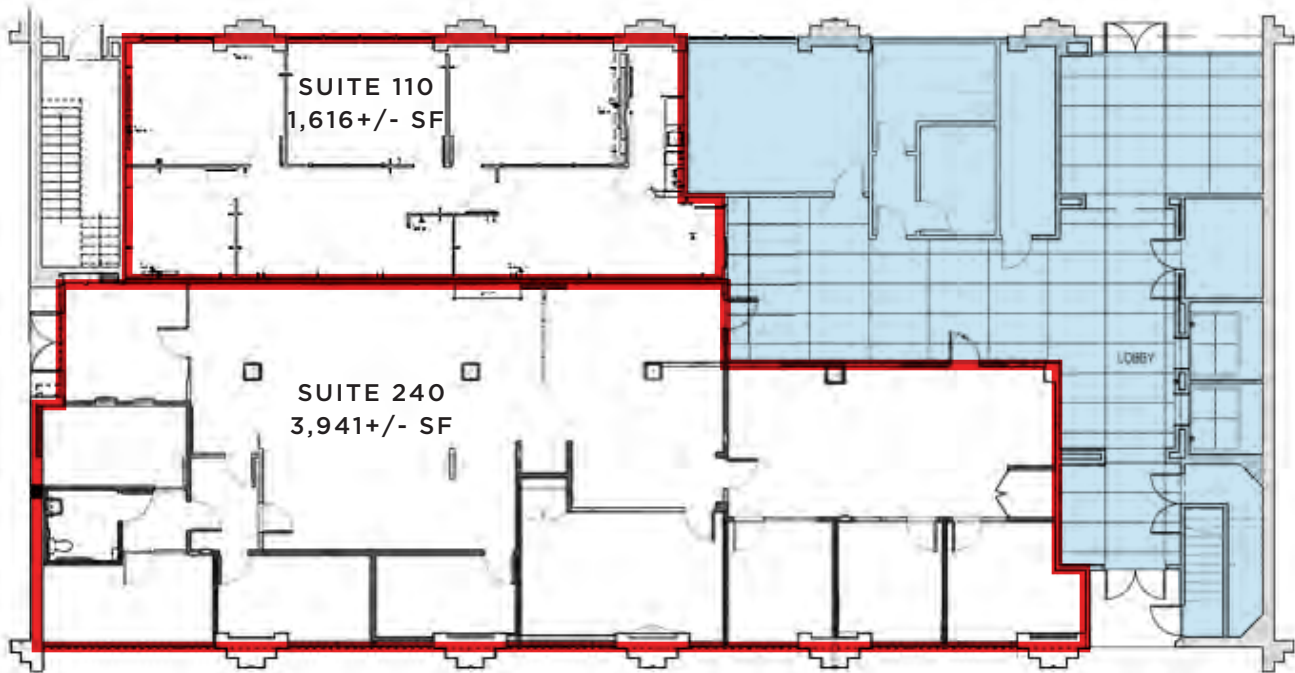
Keegan & Coppin
COMPANY, INC.



DOWNTOWN OFFICE SPACE
50 SANTA ROSA AVENUE
SANTA ROSA, CA

**BEST
DOWNTOWN
VIEWS**

FLOOR PLAN - 1ST FLOOR



- AVAILABLE
- COMMON AREA

REPRESENTED BY: DAVE PETERSON, PARTNER
KEEGAN & COPPIN CO., INC.
LIC # 01280039 (707) 528-1400, EXT 210
DPETERSON@KEEGANCOPPIN.COM

The above information, while not guaranteed, has been secured from sources we believe to be reliable. Submitted subject to error, change or withdrawal. An interested party should verify the status of the property and the information herein.



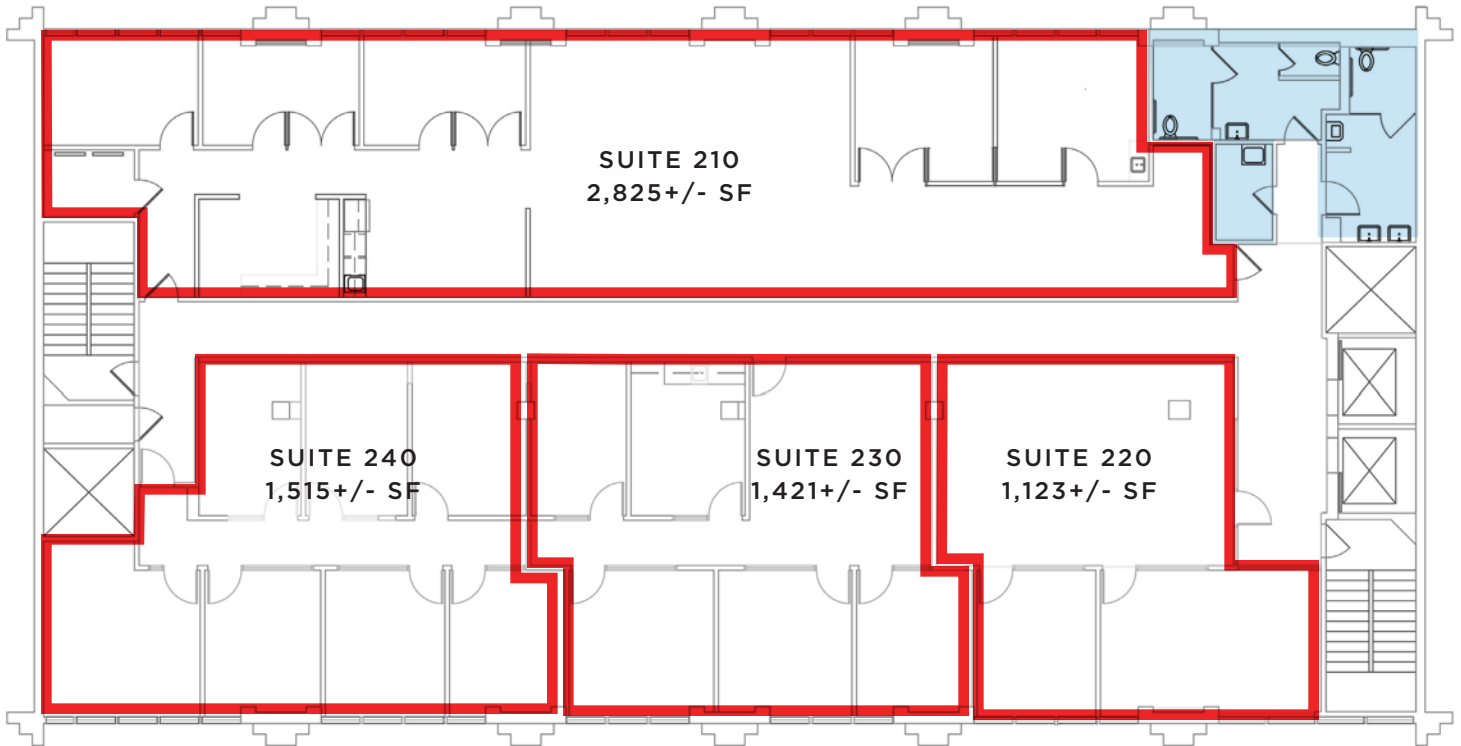
Keegan & Coppin
COMPANY, INC.



DOWNTOWN OFFICE SPACE
50 SANTA ROSA AVENUE
SANTA ROSA, CA

**BEST
DOWNTOWN
VIEWS**

FLOOR PLAN - 2ND FLOOR



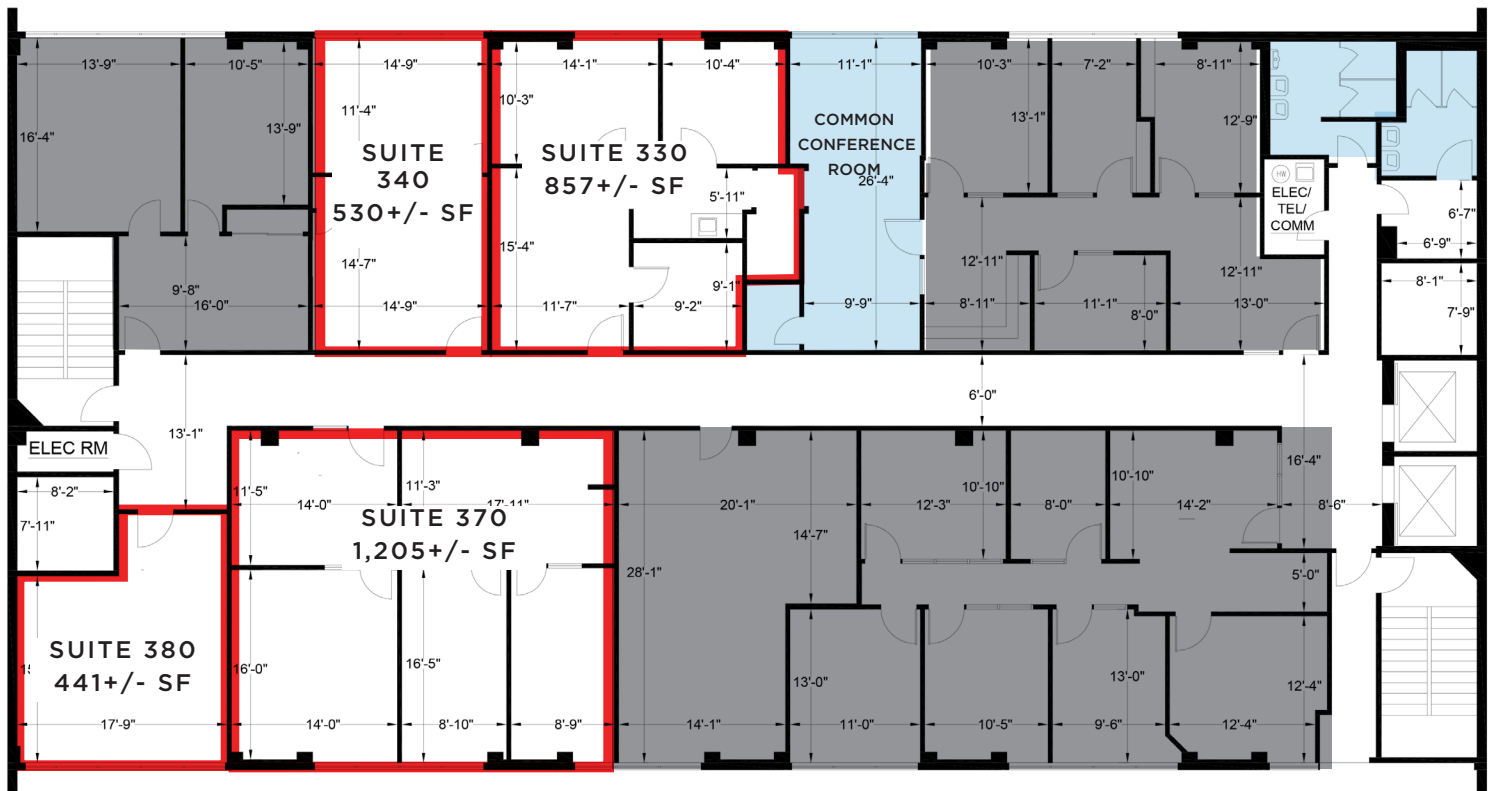
- AVAILABLE
- COMMON AREA

REPRESENTED BY: DAVE PETERSON, PARTNER
KEEGAN & COPPIN CO., INC.
LIC # 01280039 (707) 528-1400, EXT 210
DPETERSON@KEEGANCOPPIN.COM

The above information, while not guaranteed, has been secured from sources we believe to be reliable. Submitted subject to error, change or withdrawal. An interested party should verify the status of the property and the information herein.



FLOOR PLAN - 3RD FLOOR



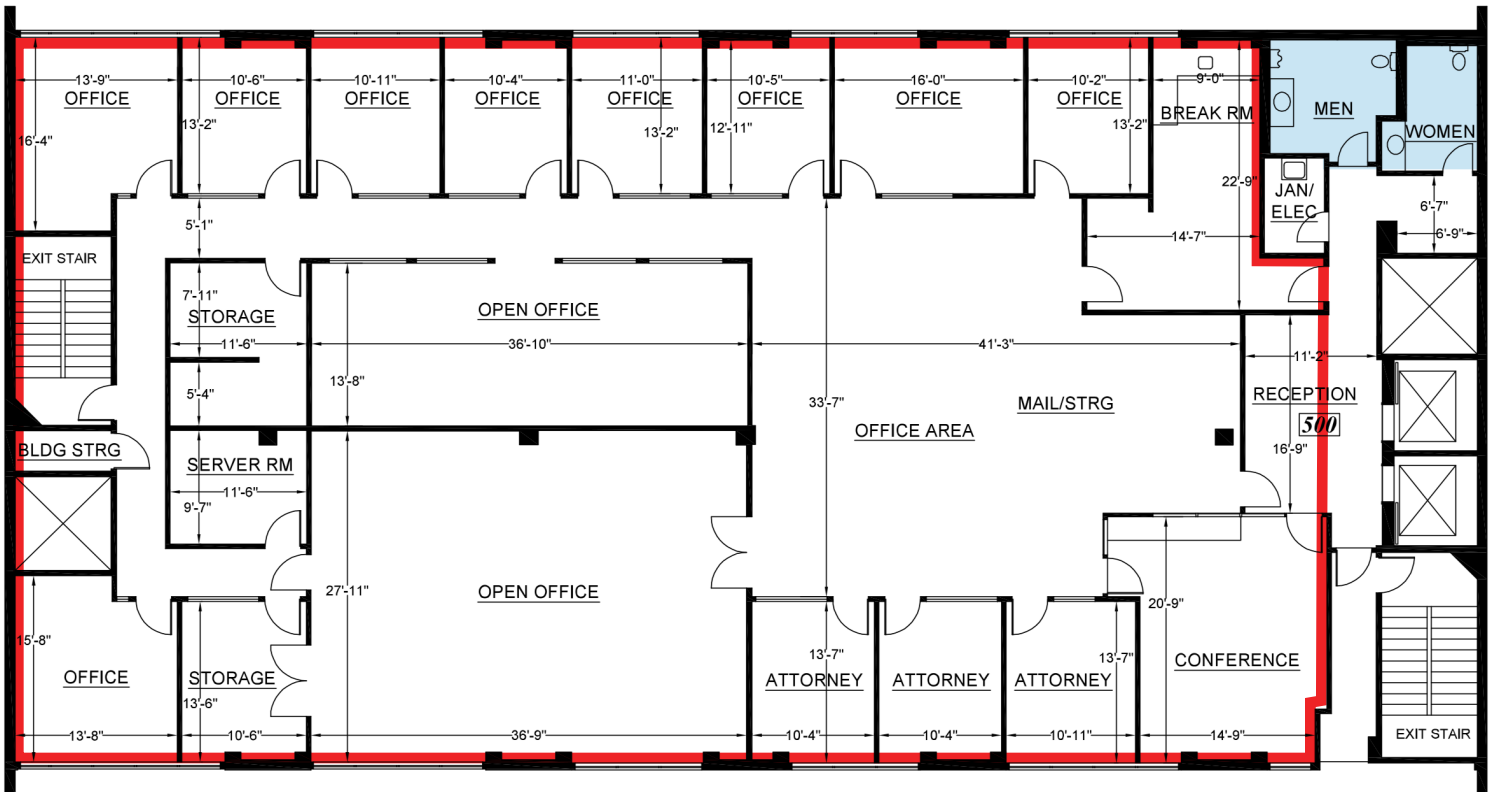
- AVAILABLE
- COMMON AREA
- NOT AVAILABLE

REPRESENTED BY: DAVE PETERSON, PARTNER
KEEGAN & COPPIN CO., INC.
LIC # 01280039 (707) 528-1400, EXT 210
DPETERSON@KEEGANCOPPIN.COM

The above information, while not guaranteed, has been secured from sources we believe to be reliable. Submitted subject to error, change or withdrawal. An interested party should verify the status of the property and the information herein.



FLOOR PLAN - 5TH FLOOR



SUITE 500 7,784+/- SF

- AVAILABLE
- COMMON AREA
- NOT AVAILABLE

REPRESENTED BY: DAVE PETERSON, PARTNER
KEEGAN & COPPIN CO., INC.
LIC # 01280039 (707) 528-1400, EXT 210
DPETERSON@KEEGANCOPPIN.COM

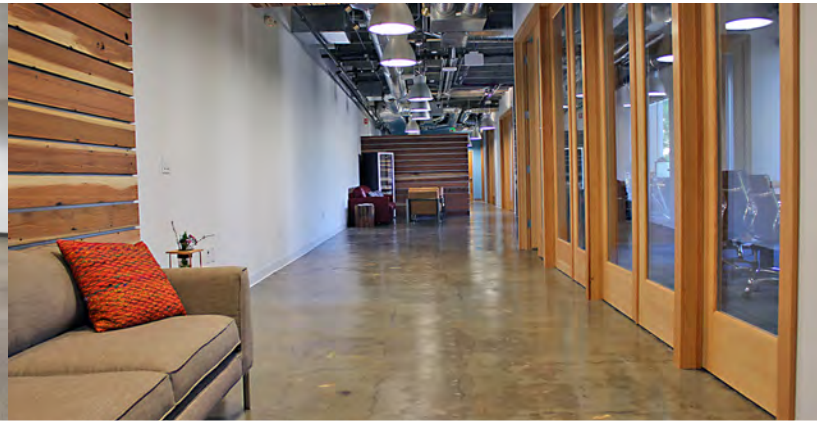
The above information, while not guaranteed, has been secured from sources we believe to be reliable. Submitted subject to error, change or withdrawal. An interested party should verify the status of the property and the information herein.



PROPERTY PHOTOS



SUITE 200



SUITE 210



SUITE 200



SUITE 210



SUITE 200



SUITE 210

REPRESENTED BY: DAVE PETERSON, PARTNER
KEEGAN & COPPIN CO., INC.
LIC # 01280039 (707) 528-1400, EXT 210
DPETERSON@KEEGANCOPPIN.COM

The above information, while not guaranteed, has been secured from sources we believe to be reliable. Submitted subject to error, change or withdrawal. An interested party should verify the status of the property and the information herein.



DOWNTOWN OFFICE SPACE
50 SANTA ROSA AVENUE
SANTA ROSA, CA

**BEST
DOWNTOWN
VIEWS**

AERIAL MAP



Keegan & Coppin Co., Inc.
1355 N Dutton Ave., Suite 100
Santa Rosa, CA 95401
keegancoppin.com
P: (707) 528-1400

REPRESENTED BY:

DAVE PETERSON, PARTNER
LIC # 01280039 (707) 528-1400, EXT 210
DPETERSON@KEEGANCOPPIN.COM