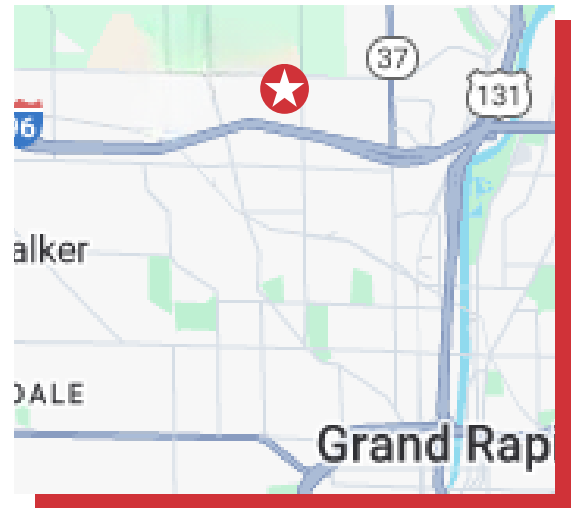




**2710 NORTHRIDGE DR NW
WALKER, MI 49544**

High Quality Manufacturing or Warehousing Space for Lease

- Excellent opportunity to lease high quality warehouse / manufacturing space on Grand Rapids' growing NW side
- 35,564 rentable SF
- Excellent access to I-96
- Good clear height ceilings
- Professional maintenance and management



LISTING AGENT:

STUART J. KINGMA, SIOR

O: 616.575.7022 | C: 616.581.5000
skingma@naiwwm.com

STAY CONNECTED



naiwwm.com
616.776.0100

PROPERTY OVERVIEW

The building located at 2710 Northridge Dr NW offers high visibility and high-volume warehousing or manufacturing capabilities. The suite contains 4 shared loading docks and 1 overhead door, all of which are available to be used by the new occupant. The building has new motion sensitive LED lights providing for an excellent work environment.



UTILITIES

Electric:	Consumers Energy
Natural Gas:	DTE Energy
Sanitary Sewer:	City of Grand Rapids
Storm Sewer:	City of Grand Rapids
Water:	City of Grand Rapids

PROPERTY INFORMATION

Location:	I-96 to Walker exit, North to Northridge Dr, West to the building on the South side of the road
Total Building Size:	262,500 SF
Year Built:	1995
Acreage:	15.72 acres
Construction:	Pre-engineered Steel
Roof:	Standing Seam Metal
Clear Height:	Up to 24'; 21 eave height'
Parking:	On-site; ample number of spaces
Security System:	No
Zoning:	ML District - Light Industrial
Municipality:	City of Walker
PPN:	41-13-04-400-031

LEGAL DESCRIPTION

PART OF SE 1/4 COM AT E 1/4 TH S 89D 53M 18S W ALONG E&W 1/4 LINE 677.05 FT TH S 3D 32M 06S E 773.14 FT ALONG E LINE OF W 1/2 E 1/2 SE 1/4 TH S 70D 19M 10S W ALONG NLY LINE OF SD HWY 840.0 FT TO BEG OF THIS DESC - TH N 19D 40M 50S W 272.0 FT TH N 53D 52M 58S W 312.0 FT TH S 76D 23M 41S W 505.87 FT TH N 40D 07M 34S W 203.09 FT TH S 86D 27M 54S W 87.70 FT TO SLY LINE OF NORTHRIDGE DR /86 FT WIDE/ TH SWLY 221.47 FT ALONG SLY LINE OF SD DR ON A 843 FT RAD CURVE TO RT /LONG CHORD BEARS S 47D 26M 14S W 220.83 FT/ TO N&S 1/4 LINE TH S 3D 02M 09S W ALONG N&S 1/4 LINE 467.13 FT TO NLY LINE OF CENTRAL MICHIGAN /FORMERLY GT/ RR R/W /100 FT WIDE/ TH ELY 334.41 FT ALONG NLY LINE OF SD RR R/W ON A 6089.74 FT RAD CURVE TO RT /LONG CHORD BEARS S 60D 05M 18S E 334.36 FT/ TO NLY LINE OF HWY I-96 /300 FT WIDE/ TH N 70D 19M 10S E ALONG NLY LINE OF SD HWY 991.39 FT TO BEG ALSO PART OF SE 1/4 COM AT INT OF NLY LINE OF HWY I-96 /300 FT WIDE/ & E LINE OF PEACH RIDGE AVE /120 FT WIDE/ TH NELY ALONG NLY LINE OF SD HWY TO SLY LINE OF CENTRAL MICHIGAN /FORMERLY GT/ RR R/W /100 FT WIDE/ TH NWLY ALONG SLY LINE OF SD RR R/W TO E LINE OF SD AVE TH S TO BEG * SEC 4 T7N R12W 15.72 A.

LEASE OVERVIEW

LEASE INFORMATION

Lease Type:	NNN
Terms:	36 - 60 months
Tenant Provides:	Taxes, Insurance, Water/Sewer, Electric, Gas/Heat, Air Conditioning, Snow Removal, Refuse Removal, Janitorial, & Phone
Landlord Provides:	Roof & Structural
Present Use:	Manufacturing and Warehousing
Possession:	At Lease signing

AVAILABILITY

SUITE	RENTABLE SF	WAREHOUSE AREA	OFFICE AREA	DOCKS/DOORS	RATE/SF/YR	MONTHLY RENT	CAM MONTHLY (\$1.61/SF)	TOTAL MONTHLY RENT
E-2	35,564	35,564	0	4/1	\$4.95	\$14,670.15	\$4,771.50	\$19,441.65



2025 TAX INFORMATION

SEV:	\$5,573,700.00
Taxable Value:	\$3,411,262.00
Summer Taxes:	\$146,356.02
Winter Taxes:	\$10,427.04
Total Taxes:	\$156,783.06

We obtained the information in this document from sources we believe to be reliable. However, we have not verified its accuracy and make no guarantee, warranty, or representation about it. It is submitted subject to the possibility of errors, omissions, change of price, rental or other conditions, prior sale, lease or financing, or withdrawal without notice. We include future projections, opinions, assumptions or estimates for example only, and they may not represent current or future performance of the property. You and your tax and legal advisors should conduct your own investigation of the property and transaction.

BUILDING OVERVIEW



WAREHOUSE INFORMATION

Warehouse SF:	233,381 SF
Floors:	One - Concrete (est. 6")
Air Conditioning:	No
HVAC:	Gas Fired/Forced Air
Ceiling Height:	21' - 24'
Spinklered:	Yes
Lighting:	Metal Halide
Power:	See attached floor plan
Column Spacing:	25' x 50'
Grade Level Doors:	5
Loading Docks:	22
Rail Siding:	No
Floor Drains:	No
Compressed Air:	No
Cranes:	No
Shop Office:	Yes
Shop Lunch Room:	Yes
Shop Restroom:	Yes

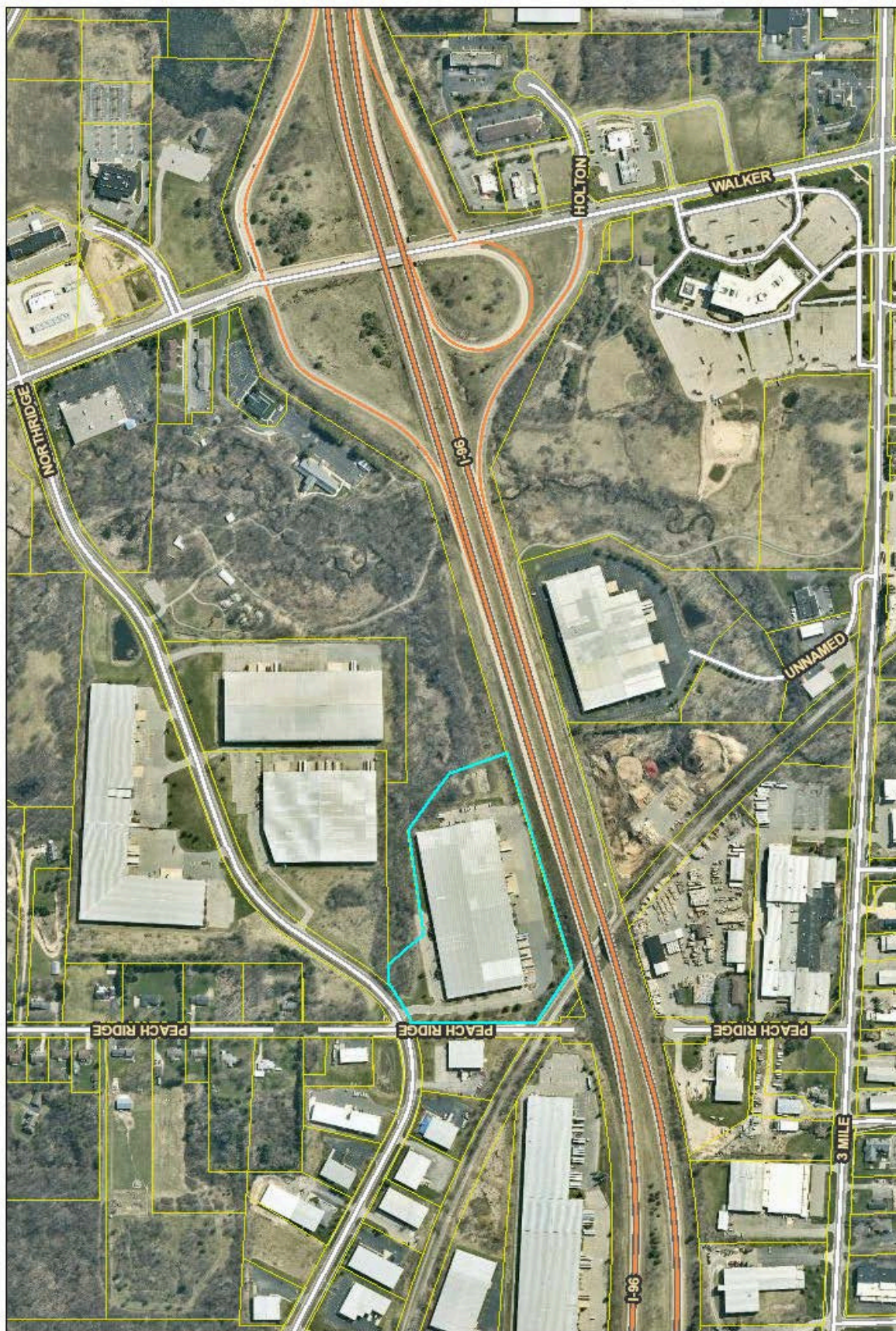
OFFICE INFORMATION

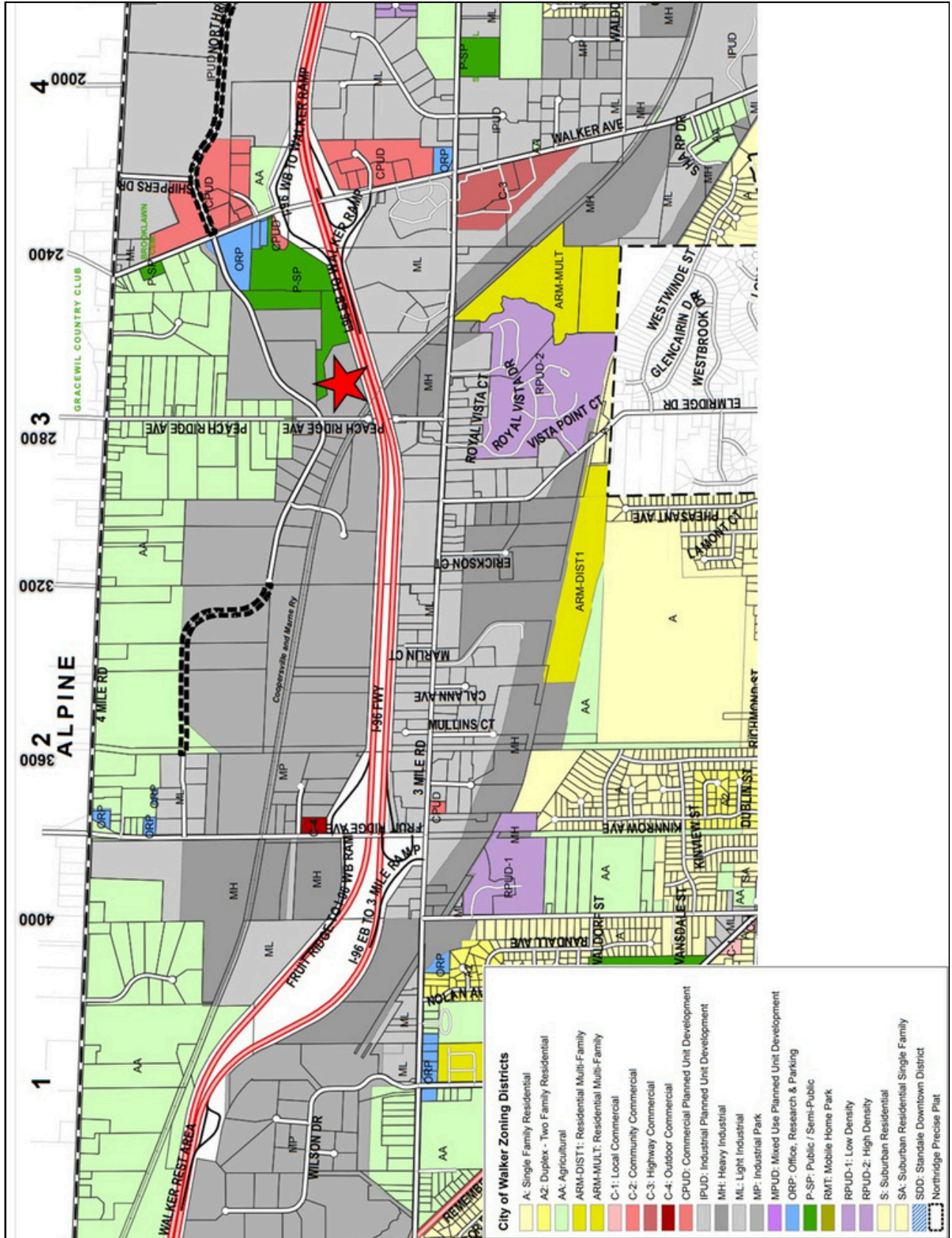
Office SF:	29,119 SF
Floors:	One
Air Conditioning:	Yes
HVAC:	Gas/Forced Air
Ceiling Height:	8'
Spinklered:	Yes
Lighting:	Fluorescent
Communication Equipment:	Yes
Private Offices:	Yes
Conference Room:	Yes
Lunch Room:	Yes
Restrooms:	Yes
Kitchen/Break Room:	Yes

PARCEL MAP

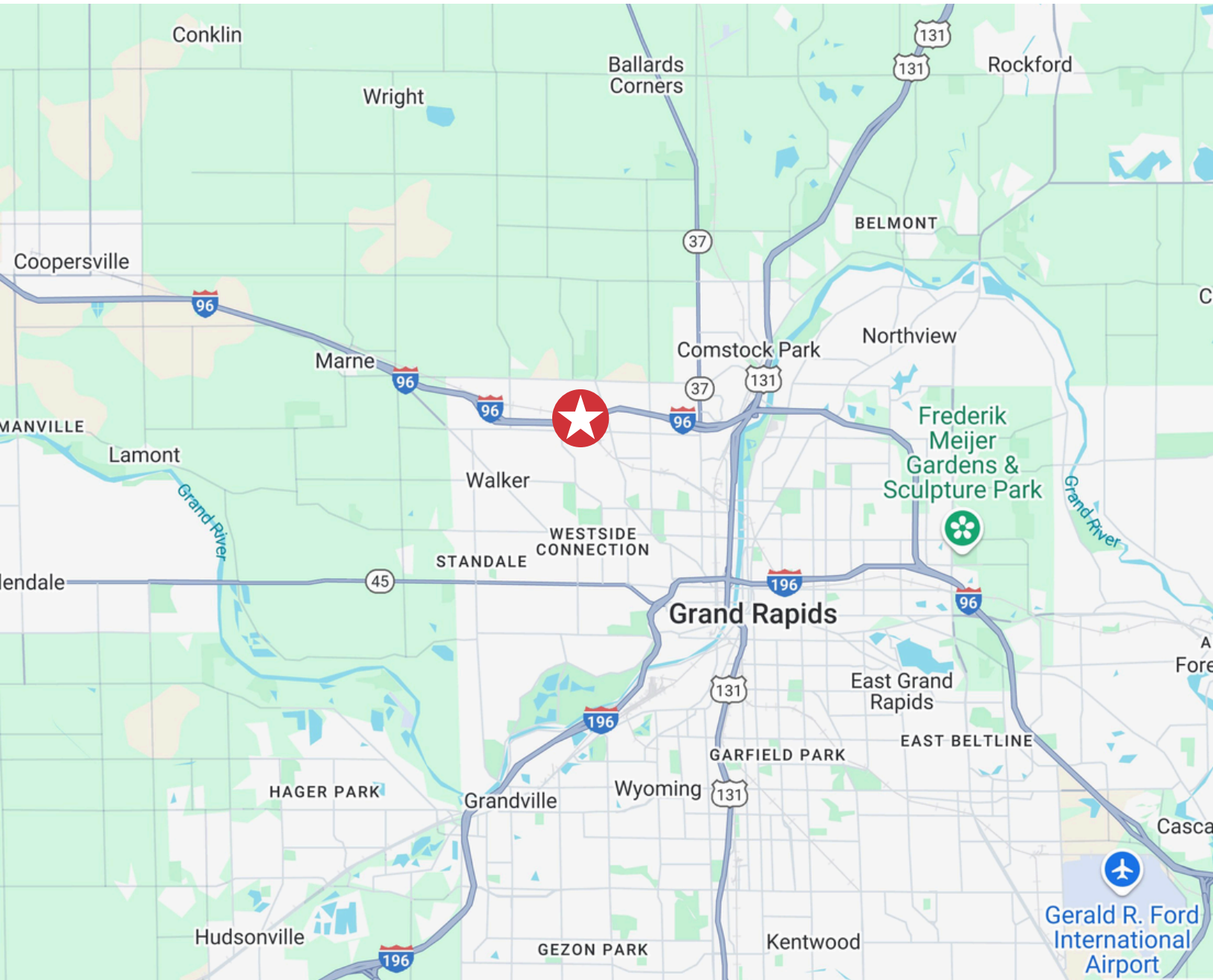
July 19, 2024

2710 Northridge Dr NW - PP #41-13-04-400-031





LOCATION MAP



PROXIMITY

I-96	0.71 miles
US-131	3.41 miles
I-196	6.28 miles
M-6	15.11 miles
Gerald R. Ford International Airport	19.02 miles

Welcome to...

WEST MICHIGAN



Home to thriving city centers and some of Michigan’s most pristine shoreline, the west central region of Michigan’s Lower Peninsula is inviting and exciting.

michigan.org



awesomemitten.com

GRAND RAPIDS, MI

Grand Rapids offers a lively urban atmosphere alongside the charm of smaller neighborhoods, creating a rich blend of culture, arts, and natural beauty. Positioned between Chicago and Detroit, West Michigan boasts a population exceeding 1.5 million, with Grand Rapids at its thriving heart.



michigan.org

GRAND HAVEN, MI

In Grand Haven, there's something for everyone year-round. From leisurely strolls along the boardwalk to the summer spectacle of the Coast Guard Festival, boat rides on the water, delightful dining experiences, Winter Fest adventures, and serene beach relaxation, the options are endless.



travelandleisure.com

HOLLAND, MI

Holland offers sandy beaches and an acclaimed downtown, merging small-town intimacy with urban conveniences. The city hosts numerous successful businesses, diverse entertainment options, 4.9 miles of Snowmelt streets, and a calendar packed with year-round events for all ages.



mlive.com

MUSKEGON, MI

Located 42 miles northwest of Grand Rapids, Muskegon is home to 26 miles of Lake Michigan shoreline and dunes, three state parks, endless outdoor activities, and countless other attractions.

US CITIES WITH THE BEST QUALITY OF LIFE 2024

Grand Rapids



THE ONLY OFFICIAL COAST GUARD CITY, USA

Grand Haven



BEST OF THE MIDWEST AWARD

Holland



BEST SMALL CITIES FOR STARTING A BUSINESS

Muskegon

