



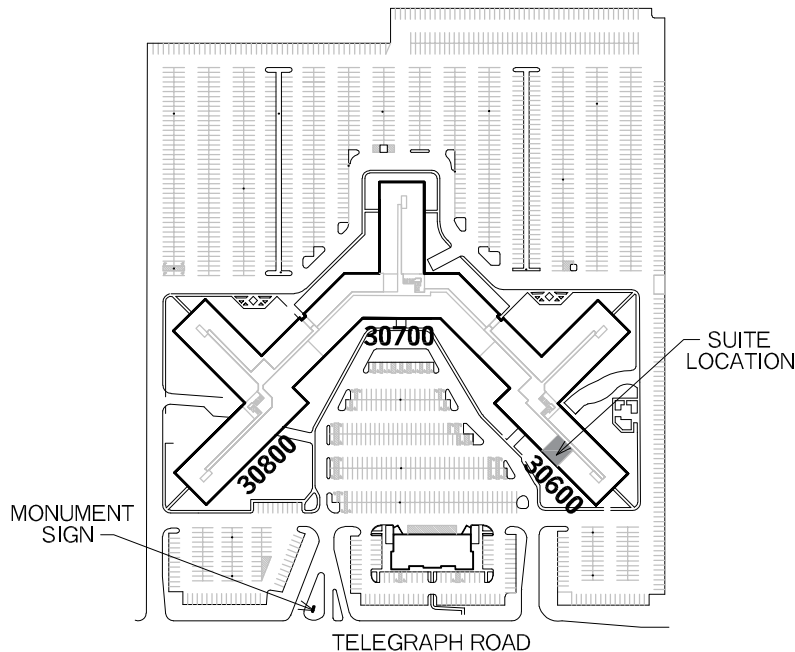
# BINGHAM OFFICE CENTER

**BINGHAM FARMS, MI 48025**

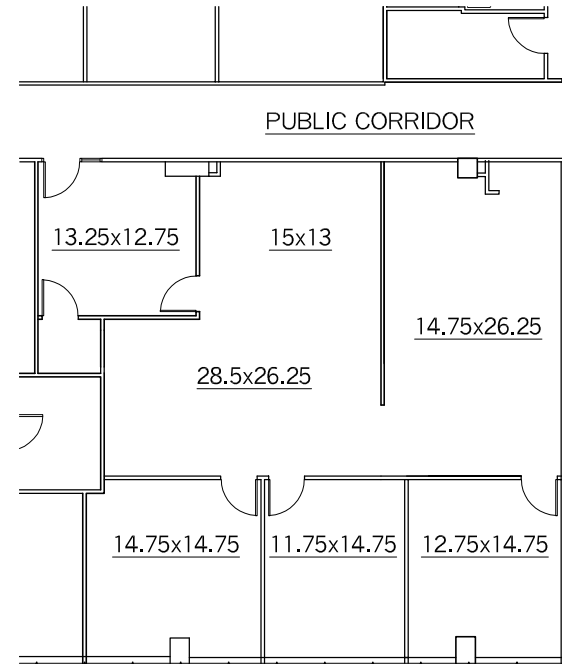
**CONTACT:**

**SHEILA FOGARTY (248) 686-5982**

- \* Newly renovated complex
- \* 24 hour security system
- \* After hours security guard on site
- \* Cafe, Sundry shop and ATM
- \* Professional on site management and maintenance
- \* Efficient energy management system
- \* Ample parking
- \* Easy access to all major thorough fares



**KEY PLAN**



## SUITE 2177

1,920 R.S.F.

SCALE: 1/16"=1'-0"

NOTE: ALL ROOM SIZES ARE APPROXIMATE