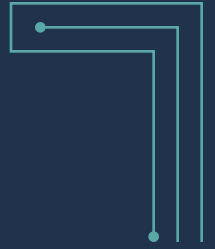




# 1801 ORANGE TREE LN

Redlands, CA

I-10 FREEWAY FRONTAGE



**OFFICE / MEDICAL SPACE FOR LEASE**

**CBRE**

## PROPERTY FEATURES



Two office suites available, ranging from 2,398 to 9,799 square feet



Modern Class A building



Close to Citrus Plaza and Mountain Grove shopping centers and Historic Downtown Redlands,, offering easy access to diverse shopping, dining, and recreational options



Direct visibility and convenient access to the I-10 freeway



123 surface parking spots



Modern common areas



Elevator served



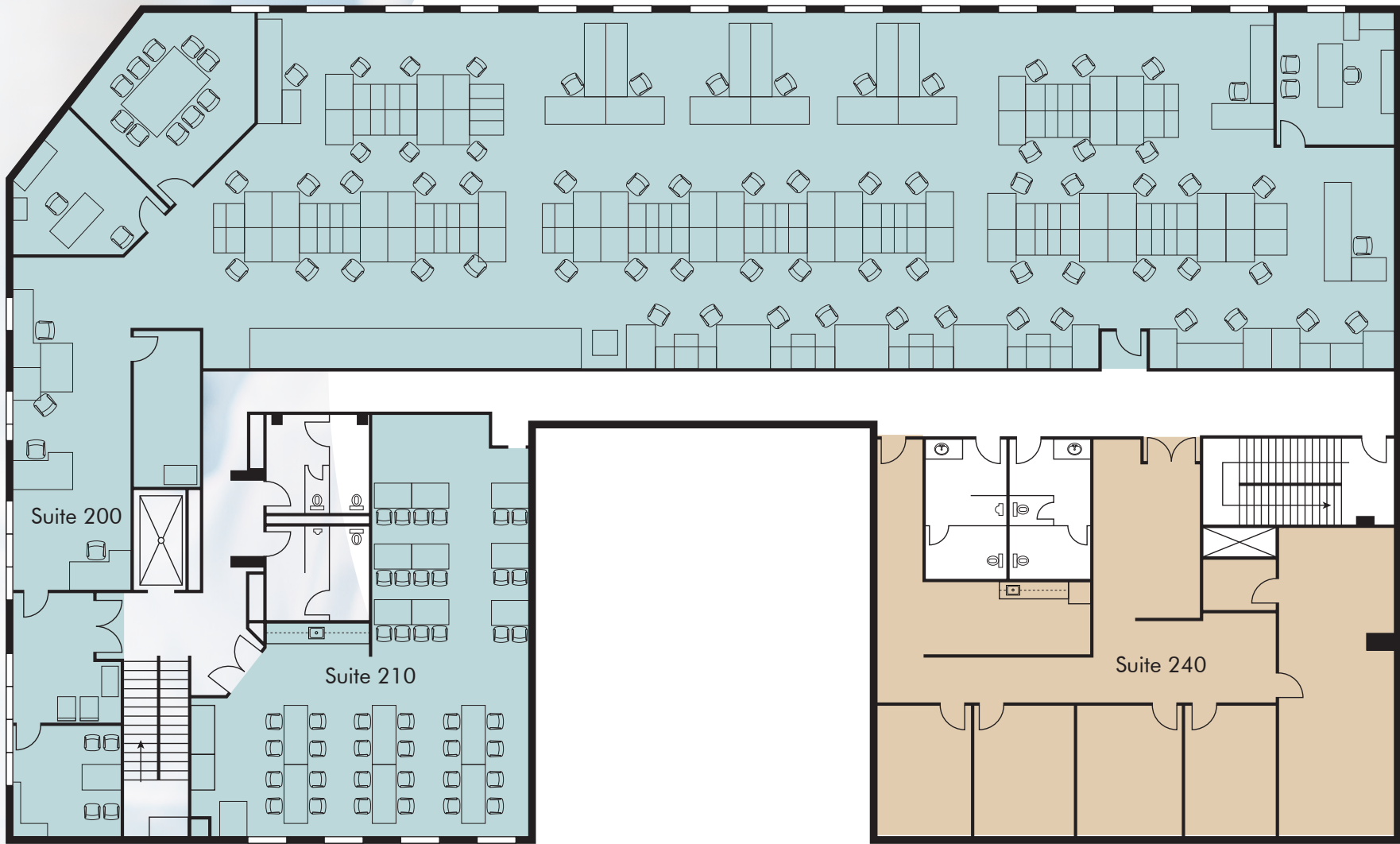




9,799 SF Total



2,398 SF Total





1801 ORANGE TREE LN | REDLANDS, CA



Citrus Plaza & Mountain Grove  
2 Minutes

Downtown Redlands  
5 Minutes





**FOR MORE INFORMATION,  
PLEASE CONTACT:**

**MICHAEL DAY**

Lic. 01362830

+1 909 418 2207

michael.day@cbre.com

© 2026 CBRE, Inc. All rights reserved. This information has been obtained from reliable sources but has not been verified for accuracy or completeness. CBRE, Inc. makes no guarantee, representation, or warranty and accepts no responsibility or liability for the accuracy, completeness, or reliability of the information contained herein. You should conduct a careful, independent investigation of the property and verify all information. Any reliance on this information is solely at your own risk. CBRE and the CBRE logo are service marks of CBRE, Inc. All other marks displayed on this document are the property of their respective owners, and the use of such marks does not imply any affiliation with or endorsement of CBRE. Photos herein are the property of their respective owners. Use of these images without the express written consent of the owner is prohibited.



1801 ORANGE TREE LN | REDLANDS, CA

**CBRE**