

As exclusive agents, we are pleased to offer the following prime space for sublease:

180 MADISON AVENUE

SUBLEASE

JUSTIN MYERS

Exec. Managing Director | Principal
O: 212.776.1281 / M: 619.840.7360
jmyers@lee-associates.com

DENNIS SOMECK

Exec. Managing Director | Principal
O: 212.776.1270 / M: 917.653.1177
dsomeck@lee-associates.com

PHILIPP PROSTOK

Associate
M: 817.880.9181
pprostok@lee-associates.com



THE SPACE

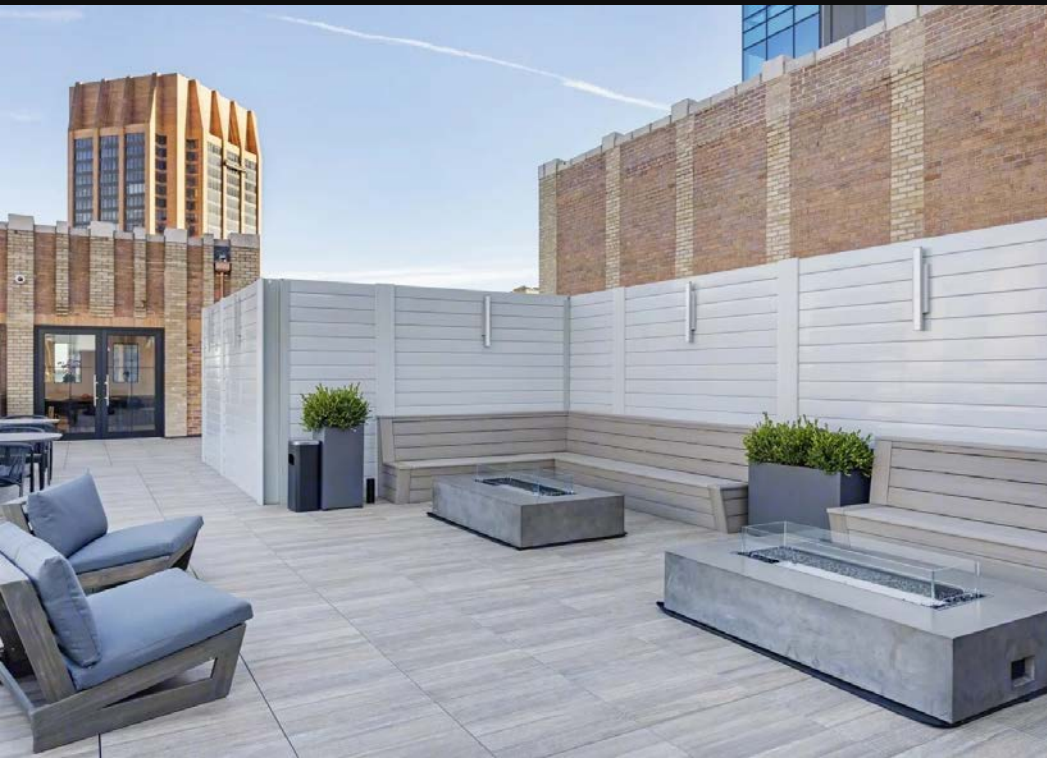
- › Entire 20th floor | 10,727 RSF
- › Sublease through February 28, 2030
(Extension or long term direct deal possible)
- › 3 sides of natural light
- › 42 sit/stand desks
- › 5 breakout rooms + 3 conference rooms
- › 4 phone booths
- › Access to common roof deck
- › Immediate possession
- › Inquire for pricing







BUILDING AMENITIES · ROOF DECK



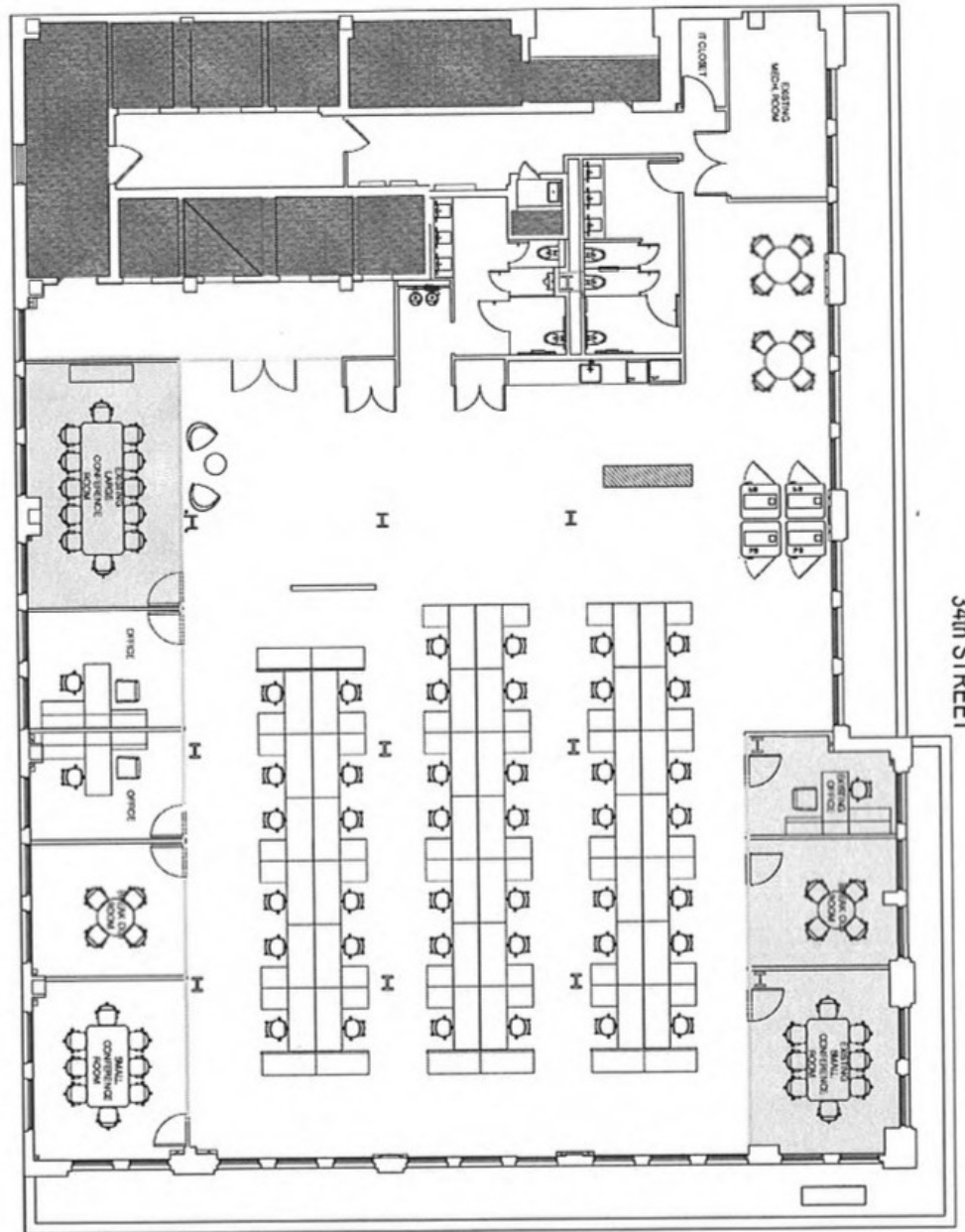
Floor Plan

20TH FLOOR | 10,727 RSF

[click for virtual tour](#)

M
0'

180 MADISON AVENUE
20TH FLOOR TEST FIT



MADISON AVENUE

34th STREET

- LEGEND
- 1 OFFICES
 - 2 LARGE CONFERENCE
 - 3 MANAGING DIRECTOR
 - 4 PHONE BOOTHS
 - 5 RECEPTION
 - 6 PAINT
 - 7 F/LAM
 - 8 STORAGE
 - 9 COAT CLOSET
 - 10 MATCH AREA INDICATES EXISTING



180

MADISON AVENUE

JUSTIN MYERS

Exec. Managing Director | Principal
O: 212.776.1281 / M: 619.840.7360
jmyers@lee-associates.com

DENNIS SOMECK

Exec. Managing Director | Principal
O: 212.776.1270 / M: 917.653.1177
dsomeck@lee-associates.com

PHILIPP PROSTOK

Associate
M: 817.880.9181
pprostok@lee-associates.com

All information supplied is from sources deemed reliable and is furnished subject to errors, omissions, modifications, removal of the listing from sale or lease. Any square footage dimensions set forth are approximate.