

5727-5767 Executive Dr E

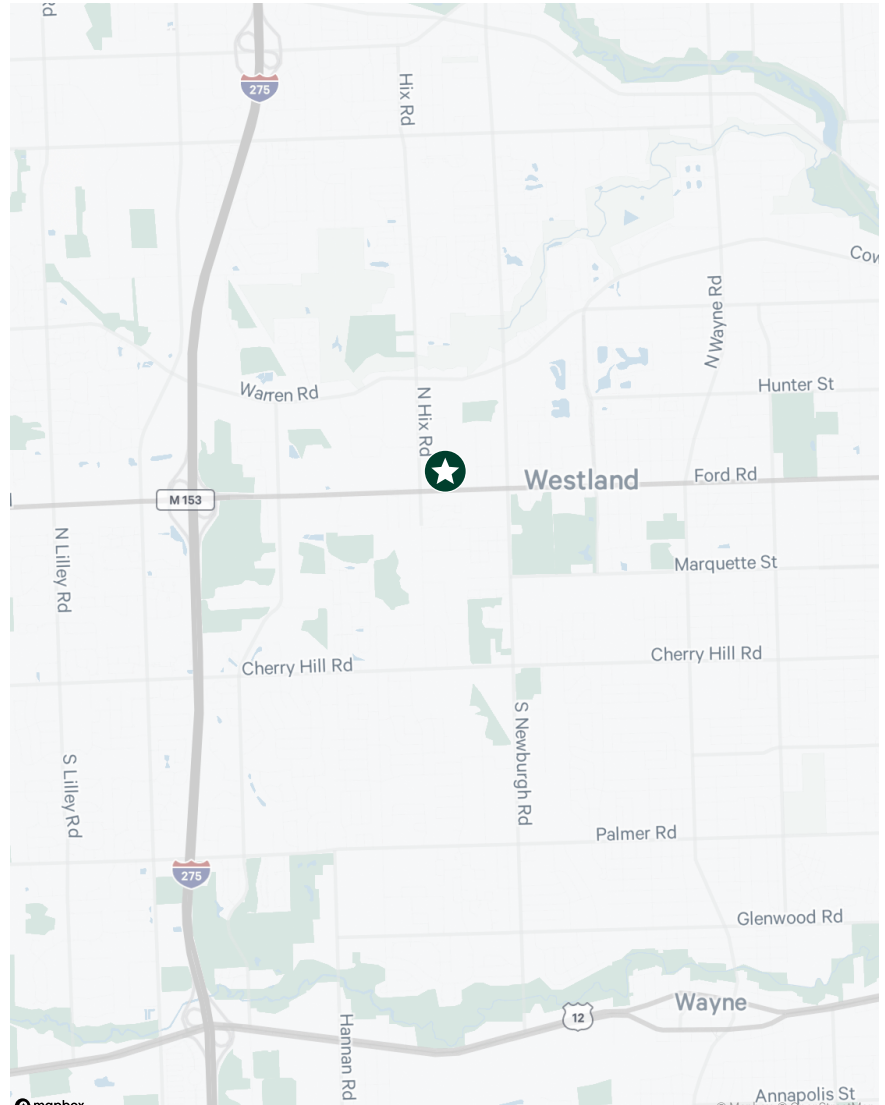
Westland, MI

New, Reduced Rate: \$6.95 NNN | 10,000 SF and 5,000 SF Suites Available



Property Features

- + 20,000 SF Building
- + 10,000 SF and 5,000 SF suites available
- + Bonus Mezzanine Space
- + Grade level drive in doors
- + Ample parking for cars and trucks
- + Lease Rate: \$6.95/SF NNN



Contact Us

**Mike
Balow**

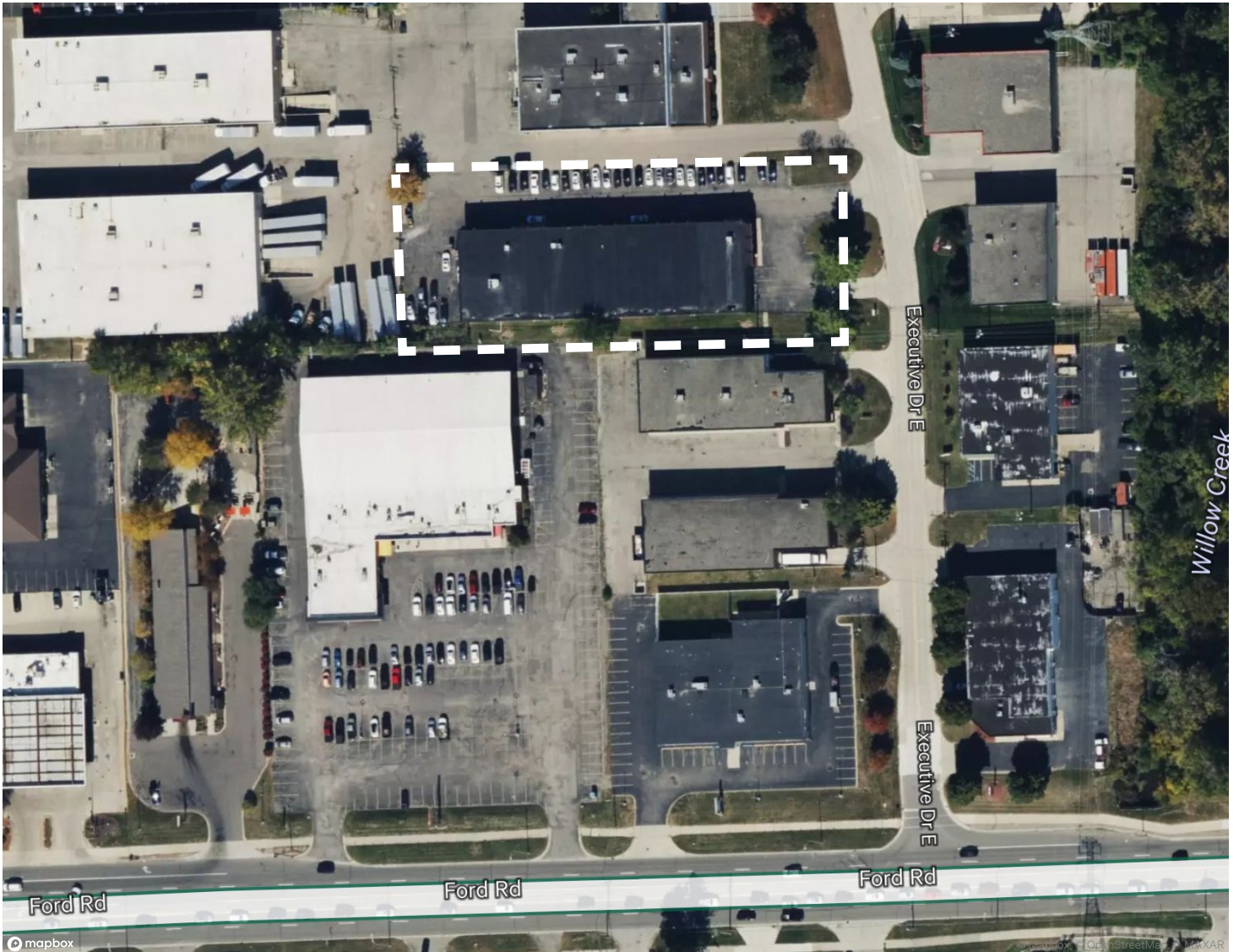
Vice President
+1 734 634 6558
michael.balow@cbre.com

**Matt
Osiecki**

First Vice President
+1 248 351 2079
matt.osiecki@cbre.com

© 2025 CBRE, Inc. All rights reserved. This information has been obtained from sources believed reliable but has not been verified for accuracy or completeness. CBRE, Inc. makes no guarantee, representation or warranty and accepts no responsibility or liability as to the accuracy, completeness, or reliability of the information contained herein. You should conduct a careful, independent investigation of the property and verify all information. Any reliance on this information is solely at your own risk.

Property Aerial



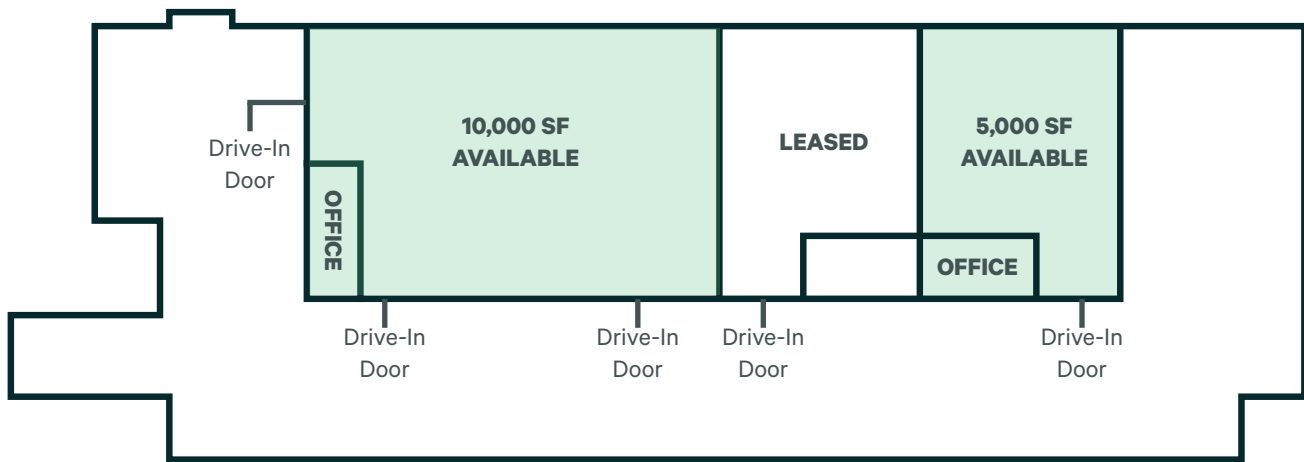
Contact Us

Mike Balow
Vice President
+1 734 634 6558
michael.balow@cbre.com

Matt Osiecki
First Vice President
+1 248 351 2079
matt.osiecki@cbre.com

© 2025 CBRE, Inc. All rights reserved. This information has been obtained from sources believed reliable but has not been verified for accuracy or completeness. CBRE, Inc. makes no guarantee, representation or warranty and accepts no responsibility or liability as to the accuracy, completeness, or reliability of the information contained herein. You should conduct a careful, independent investigation of the property and verify all information. Any reliance on this information is solely at your own risk.

Floor Plan



Contact Us

**Mike
Balow**

Vice President
+1 734 634 6558
michael.balow@cbre.com

**Matt
Osiecki**

First Vice President
+1 248 351 2079
matt.osiecki@cbre.com

© 2025 CBRE, Inc. All rights reserved. This information has been obtained from sources believed reliable but has not been verified for accuracy or completeness. CBRE, Inc. makes no guarantee, representation or warranty and accepts no responsibility or liability as to the accuracy, completeness, or reliability of the information contained herein. You should conduct a careful, independent investigation of the property and verify all information. Any reliance on this information is solely at your own risk.

Property Overview

- + County: Wayne
- + Total Building Size: 20,000 SF
- + Lease Rate: \$6.95/SF NNN
- + Zoning: Light Industrial
- + Divisible (Min/Max): 10,000 SF and 5,000 SF spaces available

Year Built:	1986	Parking:	Ample parking for cars & trucks
Total Available:	20,000 SF	HVAC:	GFA
Available Office:	Approx. 1,200 SF	Power:	240v/600amp/3 phase
Acreage	1.37 Acres	Security System:	Per Tenant
Ceiling Height:	20'	Restrooms:	Ample
Construction:	Masonry with Steel	Lighting:	Florescent
Roof:	Rubber Membrane	Grade Level Doors:	Yes
Stories:	One (1)	Floor Drains:	None

Comments

- + Well maintained 20,000 SF building divisible into 3 units.
- + 10,000 and 5,000 SF suites, each with office and bonus mezzanine storage
- + Mezzanine space not included in SF

Contact Us

Mike Balow
Vice President
+1 734 634 6558
michael.balow@cbre.com

Matt Osiecki
First Vice President
+1 248 351 2079
matt.osiecki@cbre.com

© 2025 CBRE, Inc. All rights reserved. This information has been obtained from sources believed reliable but has not been verified for accuracy or completeness. CBRE, Inc. makes no guarantee, representation or warranty and accepts no responsibility or liability as to the accuracy, completeness, or reliability of the information contained herein. You should conduct a careful, independent investigation of the property and verify all information. Any reliance on this information is solely at your own risk.