

OFFICE SPACE : FOR LEASE

607 W. Bloomingdale Avenue

Brandon, Florida 33511

LEASE RATE:

\$24.00 SF (MG)

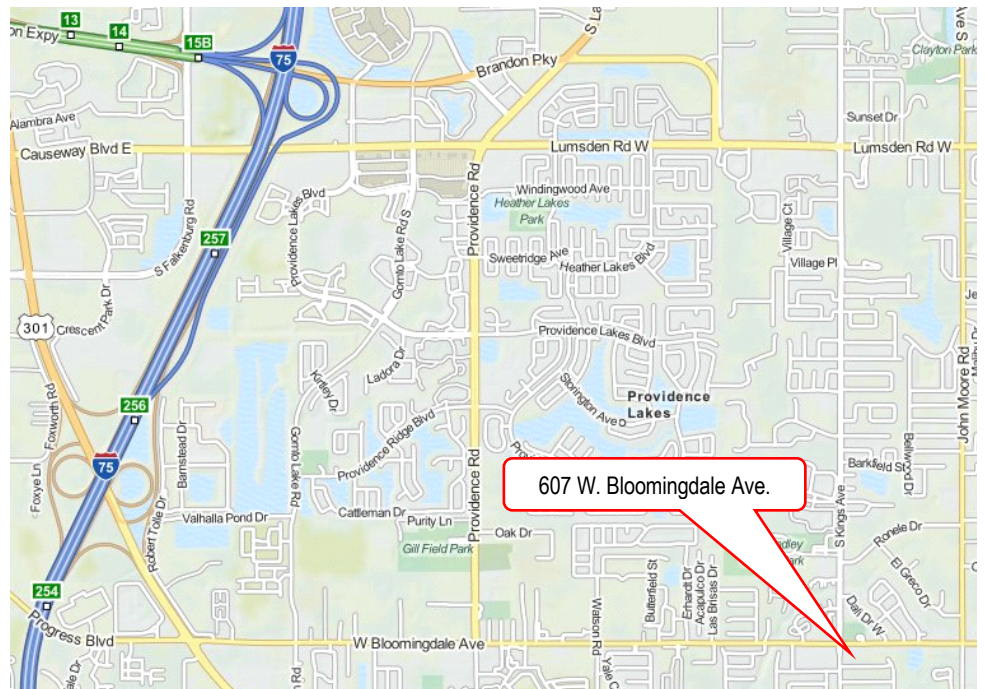
No hidden CAM charges

532 SF of Office Space FOR LEASE



PROPERTY FEATURES include:

- Professional office space includes a large open work area and ADA accessible restroom, see floor plan
- Plenty of parking available - sign space on street sign available
- Beautiful architecture, tile roof with column entrances
- Located on the southeast corner of Bloomingdale Ave. and Kings Ave.
- Modified Gross rate: includes CAM charges, real estate taxes & insurance, plus water, sewer and trash pickup



For information, contact:

Carl Stickeler
(813) 390-0951

carl@turnercole.com



Hillsborough's Finest Real Estate Team

Let us work for you!



Turner Cole Company

Real Estate Services

607 W. Bloomingdale Avenue

Brandon, Florida 33511

Floorplan

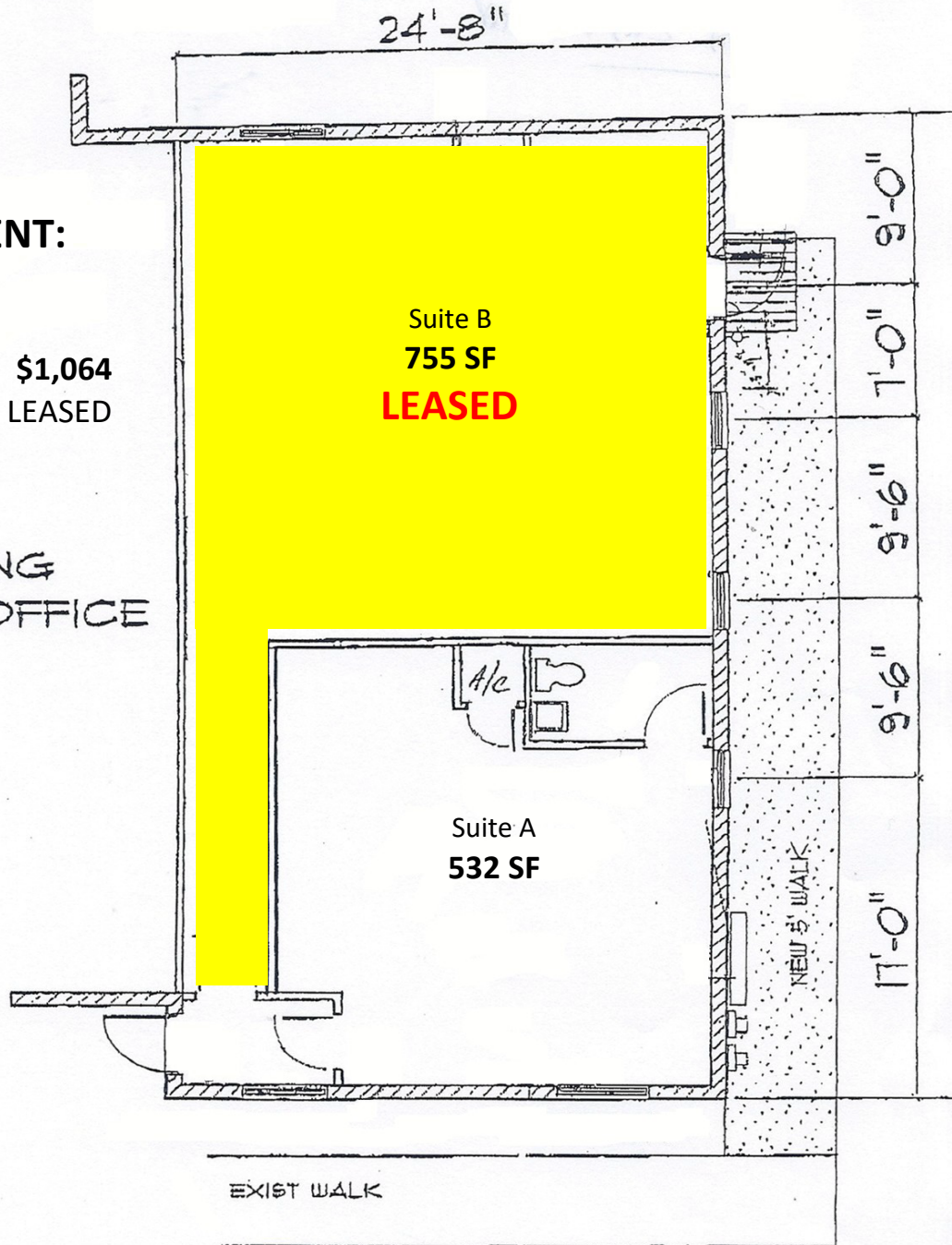
Suite A: 532 SF

MONTHLY RENT:

(modified gross rate)

Suite A: 532 SF = \$1,064

Suite B: 755 SF = LEASED



EXISTING
DENTAL OFFICE

NO WARRANTY OR REPRESENTATION, EXPRESSED OR IMPLIED, IS MADE AS TO THE ACCURACY OF THE INFORMATION CONTAINED HEREIN, AND SAME IS SUBMITTED SUBJECT TO ERRORS, OMISSIONS, CHANGE OF PRICE, RENTAL OR OTHER CONDITIONS, WITHDRAWAL WITHOUT NOTICE, AND TO ANY SPECIFIC LISTING CONDITIONS, IMPOSED BY OUR PRINCIPALS.