

PRIME RETAIL LOCATION

203 S. STATE STREET at 11 E Adams Street, Chicago, IL

AVAILABLE NOW

SUITE 120
18,620 RSF

Availability: Immediate

Term: 5-10 Years

Rate: \$85.00/RSF NNN

Candice Wells

EVP | Director of Retail Leasing

312.884.5452

cwells@marcrealty.com



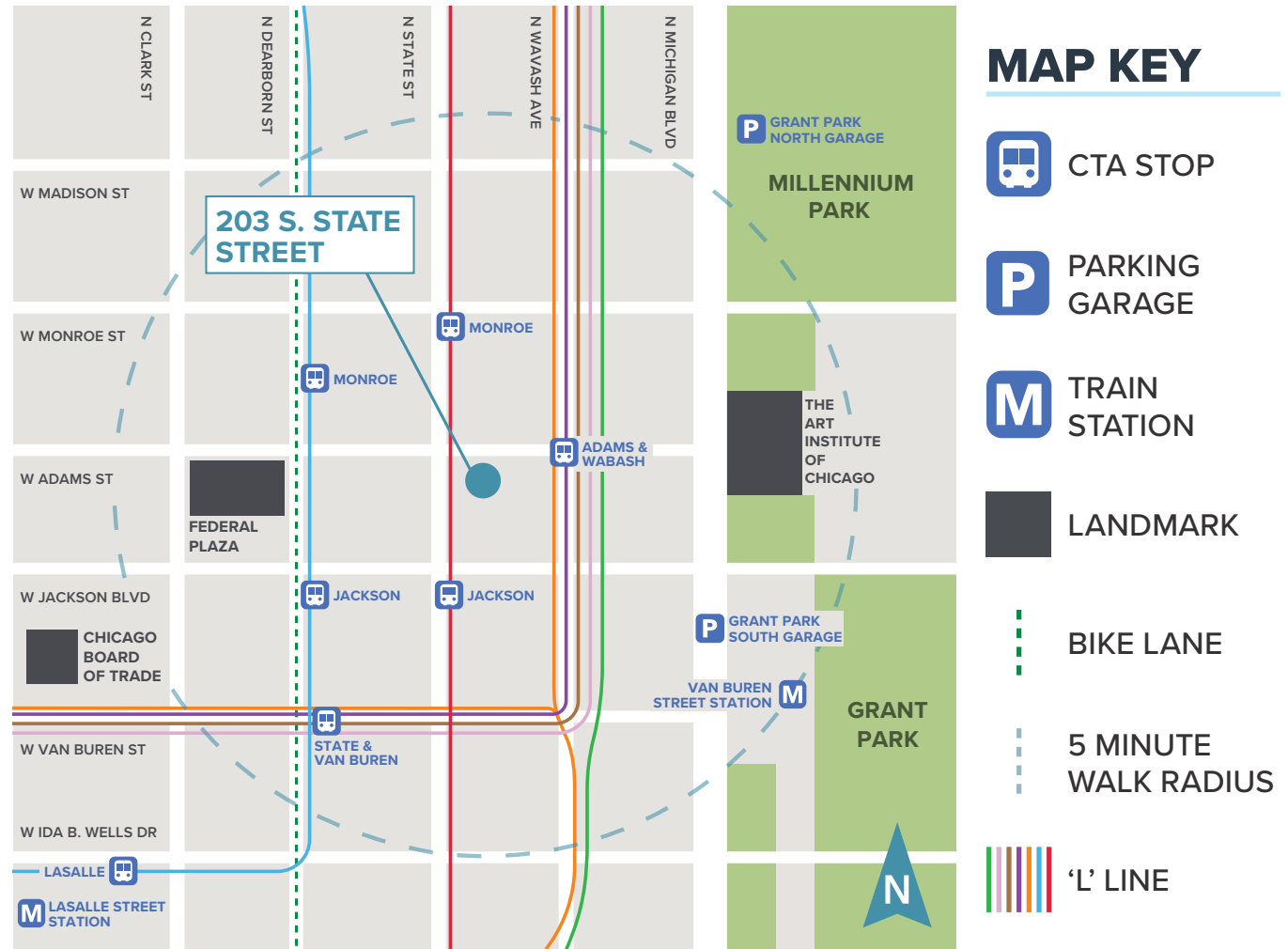
Exceptional Value
Remarkable Locations



AREA HIGHLIGHTS

Within blocks of Millennium Park, Grant Park, the Art Institute of Chicago, and the Chicago Cultural Center. Within blocks of the Financial District, Federal buildings and DePaul Campus.

Abundant parking available at Millennium Park and city garages. Within walking distance of public transportation (Loop Link, Buses, "L", Metra Train Stations and DIVVY).



100% Transit Score and Walk Score Loopnet.



Average household income of \$144,000 within a 2 mile radius.



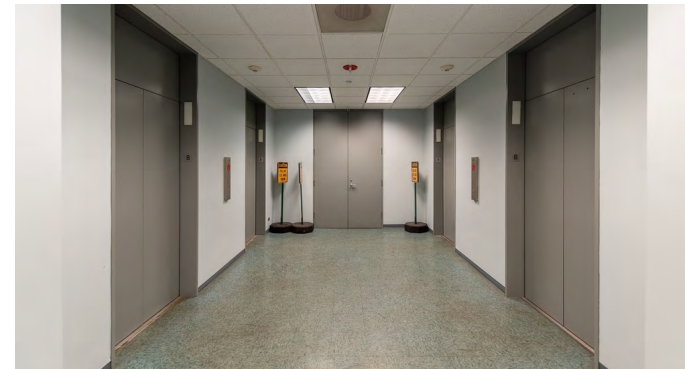
Population of 254,000 within a 2 mile radius.



THE VAULT

ARMANI • CANALI • HUGO BOSS • ZIGNA • VERSACE

Please ask for assistance



Ideal location for retail, tech, non-profit, or established business with specialized security needs.

203 S STATE STREET

at 11 E Adams Street

SUITE 120
18,620 RSF

State Street entrance w/ 26'5" linear frontage

Underground bank vault +/- 30' x 45'

Large open space plan

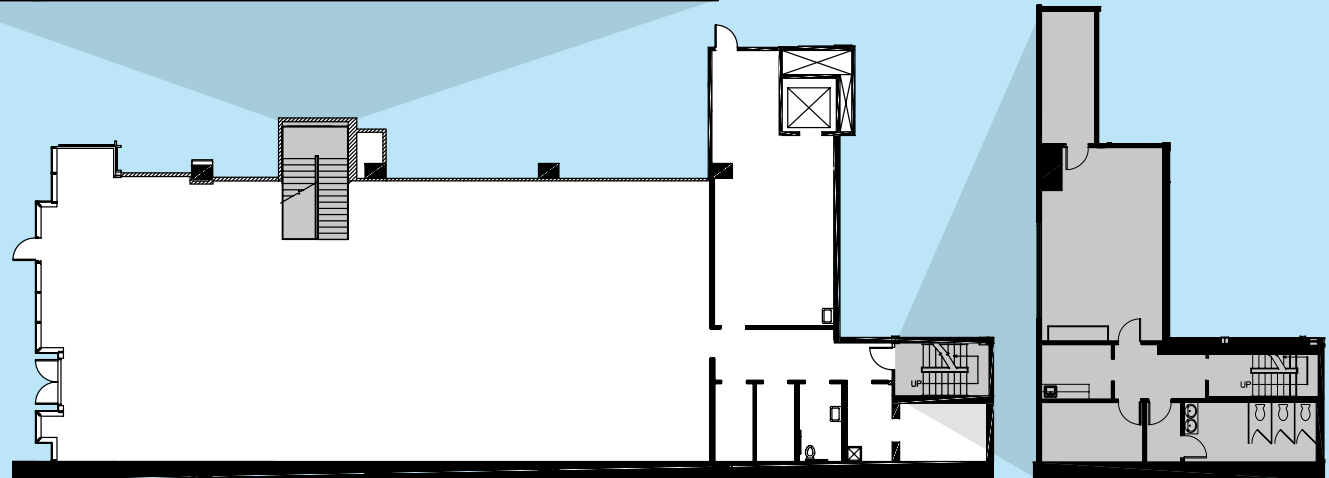
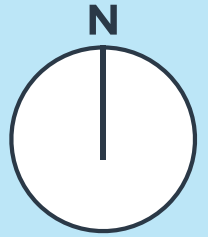
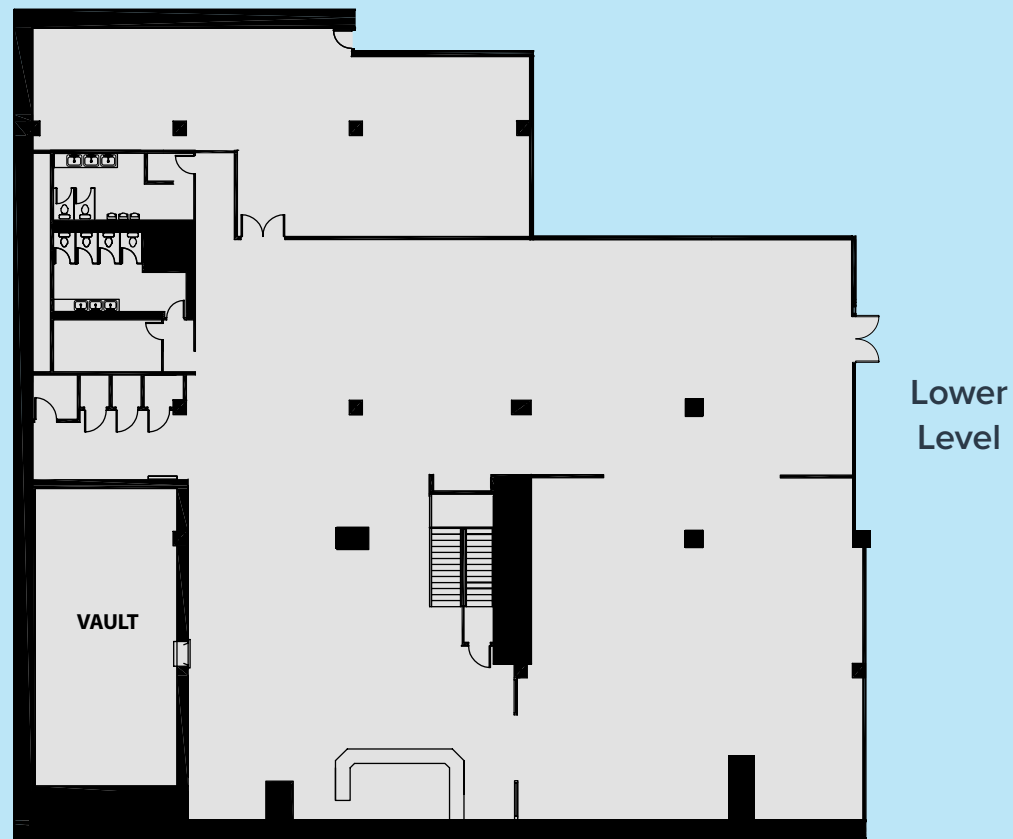
Black Iron available

Build-to-suite available

Existing restrooms & changing rooms

Lofted ceilings

High Speed Internet access with multiple telecom providers



Ground Level

Mezzanine Level

Candice Wells

EVP | Director of Retail Leasing
cwells@marcrealty.com | 312.884.5452

180 N Wabash Ave, Suite 800
Chicago, IL 60601

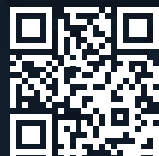


Exceptional Value
Remarkable Locations

THE BEST LOCATED BUILDINGS

CHICAGO

Striving to deliver the highest level of service within all aspects of our business. We pride ourselves in having a strong local knowledge of the real estate market with an equally strong understanding of our tenant's business needs. This allows us to better serve our individual clients by matching up their unique requirements with the best real estate decisions.



**MORE SPACES AVAILABLE
AT MARCREALTY.COM**

Candice Wells

EVP | Director of Retail Leasing
cwells@marcrealty.com | 312.884.5452

180 N Wabash Ave, Suite 800
Chicago, IL 60601

