

# 140 BAYTECH

SAN JOSE, CA

51,711 ft<sup>2</sup>

ROGER FIELDS  
(650) 327-2014 OFFICE  
(650) 207-1610 CELL  
rfields@peninsulaland.com

LOIS QUILALANG  
(650) 327-2014 OFFICE  
(510) 798-0336 CELL  
lois@peninsulaland.com

PARKER FIELDS  
(650) 327-2014 OFFICE  
(650) 208-9979 CELL  
parker@peninsulaland.com

MARY BLASER  
(650) 327-2014 OFFICE  
(408) 309-4049 CELL  
mary@peninsulaland.com

VIEW TOUR



# Property **Highlights**

140 Baytech

51,711 ft<sup>2</sup>



Easy Access to Highways  
237, 880 & 101



16 Minutes Drive to SJC Airport  
39 Minutes to SFO



Ample Parking: ± 4/1.000



Dock-High Loading



Near @First Shopping Center &  
Top Golf



Single Story Office/ R&D  
Newly Renovated Interiors  
New Restrooms With Shower

# Photos

140 Baytech

51,711 ft<sup>2</sup>



# Photos

140 Baytech

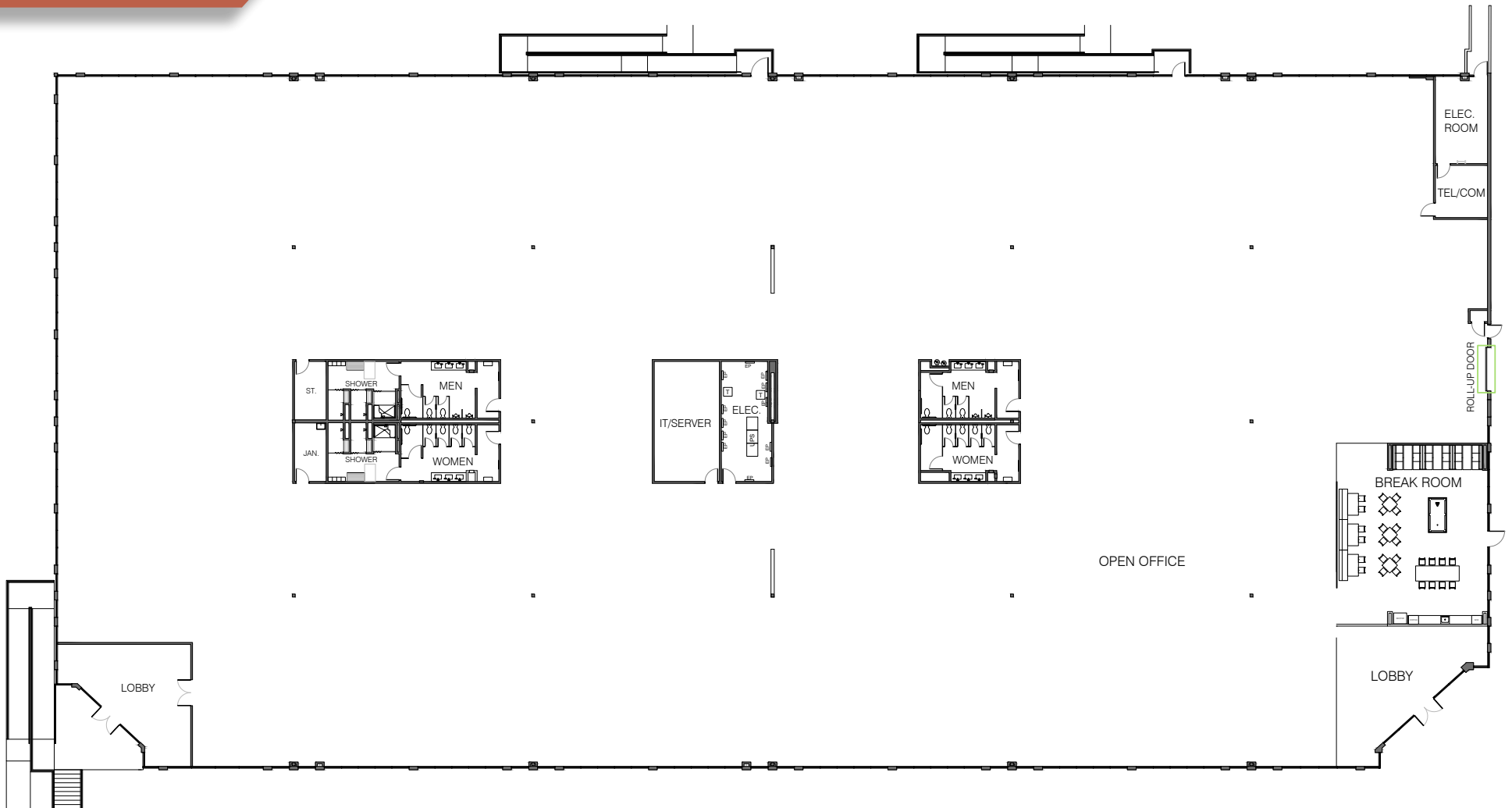
51,711 ft<sup>2</sup>



# Floor Plan

140 Baytech

51,711 ft<sup>2</sup>



# Surrounding Amenities

140 Baytech

51,711 ft<sup>2</sup>



# For additional information, please reach out to the listing team:

**ROGER FIELDS**  
(650) 327-2014 OFFICE  
(650) 207-1610 CELL  
rfields@peninsulaland.com

**PARKER FIELDS**  
(650) 327-2014 OFFICE  
(650) 208-9979 CELL  
parker@peninsulaland.com

**LOIS QUILALANG**  
(650) 327-2014 OFFICE  
(510) 798-0336 CELL  
lois@peninsulaland.com

**MARY BLASER**  
(650) 327-2014 OFFICE  
(408) 309-4049 CELL  
mary@peninsulaland.com

[www.peninsulaland.com](http://www.peninsulaland.com)

© 2021 Peninsula Land & Capital | 2390 El Camino Real, Suite 210 | Palo Alto, CA 94306 | 650-327-201

This information supplied herein is from sources we deem reliable. It is provided without any representation, warranty, or guarantee, expressed or implied as to its accuracy. Prospective Buyer or Tenant should conduct an independent investigation and verification of all matters deemed to be material, including, but not limited to, statements of income and expenses. Consult your attorney, accountant, or other professional advisor.

