

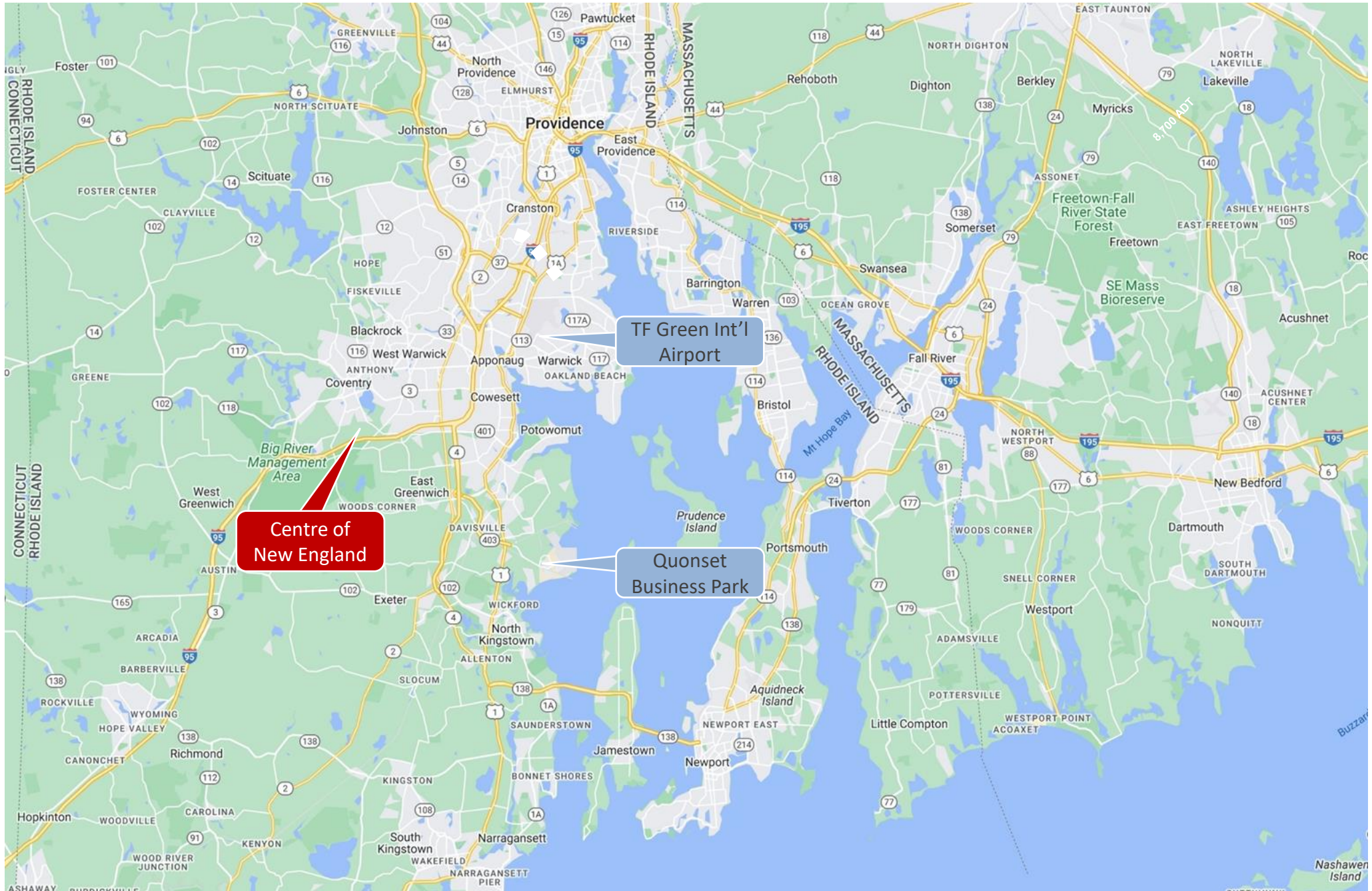


HAYES & SHERRY

FOR SALE, LEASE OR JOINT VENTURE

Centre of New England

Coventry, RI





Single-Family/Townhouse
362 Units 58.5± Ac

Multifamily 350 Units
±23.5 Ac

Lot 8 Business Park
±15.0 Ac

COVENTRY CENTRE
48,000 SF RETAIL
& 218 UNITS
2025/2026

Lot 6 Retail
1.5± Ac

65 Townhouses

Lot 7 Business Park
Self Storage 3.1± Ac

Grandville at
Greenwich
300 Units

Planned
Apartments
(230 Units)

Cedar Ridge Condos
(100 Units +/-)

Omnicare, DAI Restore,
Office/Industrial Park (300+)

IGT HQ
(300+ Employees)

Amgen
(600+
Employees)

Brookdale
Senior Living

Centre of New England Blvd

Residence
Inn
Marriott

I-95: 71,100 ADT

13,000 ADT

20,000 ADT

11,918 ADT

Bridge Under
Construction

Walmart
Supercenter

Verizon

863 Sushi

Sprint

Applebee's

B's
WHOLESALE CLUB

Firestone
COMPLETE AUTO CARE

Urgent Care

Wendy's

CVS
tropical CAFE

McDonald's



HAYES & SHERRY

FOR SALE, LEASE OR JOINT VENTURE

Centre of New England

Coventry, RI

±58.5 Acre Lot Available (Lot 2 & 3) SUBDIVIDABLE FOR SALE, LEASE OR BUILD TO SUIT

PROPERTY FEATURES

- 58.5 ACRES (LOTS 2&3)
- 362 RESIDENTIAL UNITS PLANNED
- LOCATED ON CENTRE OF NEW ENGLAND BOULEVARD
- CONCEPTUAL DESIGN PLAN PENDING

TRAFFIC & DEMOS

- NEW LONDON TURNPIKE 26,000 VPD
- INTERSTATE 95 71,000 VPD
- ARNOLD ROAD 13,000 VPD

DEMOS	2 mi	3 mi	4 mi	5 mi
Pop	12,956	28,136	53,718	72,805
Med HH \$	\$99,647	\$100,810	\$97,805	\$99,618
Daytime Pop	5,298	8,564	16,033	24,094

362 RESIDENTIAL UNITS - PLANNED



For more information, please contact:

Jeff Finan
Partner
401 273 7428
jfinan@hayessherry.com

Bill Greene
Partner
401 273 7429
bgreene@hayessherry.com

146 Westminster Street, 2nd floor
Providence, RI 02903
phone: 401 273 1980
www.hayessherry.com

Independently Owned and Operated / A Member of the Cushman & Wakefield Alliance

Cushman & Wakefield Copyright 2024. No warranty or representation, express or implied, is made to the accuracy or completeness of the information contained herein, and same is submitted subject to errors, omissions, change of price, rental or other conditions, withdrawal without notice, and to any special listing conditions imposed by the property owner(s). As applicable, we make no representation as to the condition of the property (or properties) in question.

±23.6 Acre Lot Available (Lot 4 & 5)
SUBDIVIDABLE FOR SALE, LEASE OR BUILD TO SUIT

PROPERTY FEATURES

- **23.6 ACRES (LOTS 4)**
- 350 MULTIFAMILY UNITS PLANNED
- LOCATED ON ARNOLD ROAD
- CONCEPTUAL DESIGN PLAN PENDING

Traffic & Demos

- NEW LONDON TURNPIKE 26,000 VPD
- INTERSTATE 95 71,000 VPD
- ARNOLD ROAD 13,000 VPD

DEMOS	2 mi	3 mi	4 mi	5 mi
Pop	12,956	28,136	53,718	72,805
Med HH \$	\$99,647	\$100,810	\$97,805	\$99,618
Daytime Pop	5,298	8,564	16,033	24,094

350 MULTI-FAMILY UNITS PLANNED



For more information, please contact:

Jeff Finan
 Partner
 401 273 7428
jfinan@hayessherry.com

Bill Greene
 Partner
 401 273 7429
bgreene@hayessherry.com

146 Westminster Street, 2nd floor
 Providence, RI 02903
 phone: 401 273 1980
www.hayessherry.com

±1.5 Acre Lot Available (Lot 6)

Price Upon Request

Property Features

- PAD SITE AT SUPER WALMART
- ±1.5 ACRES
- 250' FRONT ON CENTRE OF NEW ENGLAND BOULEVARD
- 600+ FUTURE RESIDENTIAL UNITS COMING
- GREAT ACCESS AND VISIBILITY
- EXCELLENT RETAIL SYNERGY
- NEIGHBORING RETAIL INCLUDES:
 - HOME DEPOT BJ'S WALMART CVS
 - DUNKIN' WENDY'S McDONALD'S VERIZON

Traffic & Demos

- NEW LONDON TURNPIKE 26,000 VPD
- INTERSTATE 95 71,000 VPD
- ARNOLD ROAD 13,000 VPD

DEMOS	2 mi	3 mil	4 mi	5 mi
Pop	12,956	28,136	53,718	72,805
Med HH \$	\$99,647	\$100,810	\$97,805	\$99,618
Daytime Pop	5,298	8,564	16,033	24,094

1.5 ACRES RETAIL PAD



For more information, please contact:

Bill Greene
 Partner
 401 273 7429
bgreene@hayessherry.com

146 Westminster Street, 2nd floor
 Providence, RI 02903
 phone: 401 273 1980
www.hayessherry.com

±3.1 Acre Lot Available (Lot 7)

SUBDIVIDABLE FOR SALE, LEASE OR BUILD TO SUIT

Property Features

- LOCATED IN THE CENTRE OF NEW ENGLAND PARK
- ±3.1 ACRES OF BUSINESS PARK LAND THAT ALLOWS FOR RETAIL, FLEX AND INDUSTRIAL USE
- JUST OFF HOPKINS HILL AT CENTRE OF NE BOULEVARD
- 350' FRONT ON CENTRE OF NEW ENGLAND BOULEVARD
- GREAT ACCESS AND VISIBILITY
- NEIGHBORING TENANTS INCLUDE:
 - IGT HQ AMGEN CENTREX
 - DAI RESTORE OMNICARE
- 600+ FUTURE RESIDENTIAL UNITS AND RETAIL COMING

Traffic & Demos

- NEW LONDON TURNPIKE 26,000 VPD
- INTERSTATE 95 71,000 VPD
- ARNOLD ROAD 13,000 VPD

DEMOS	2 mi	3 mi	4 mi	5 mi
Pop	12,956	28,136	53,718	72,805
Med HH \$	\$99,647	\$100,810	\$97,805	\$99,618
Daytime Pop	5,298	8,564	16,033	24,094

3.1 ACRES BUSINESS PARK SITE



For more information, please contact:

Jeff Finan
 Partner
 401 273 7428
jfinan@hayessherry.com

146 Westminster Street, 2nd floor
 Providence, RI 02903
 phone: 401 273 1980
www.hayessherry.com

±15.0 Acre Lot Available (Lot 8)
SUBDIVIDABLE FOR SALE, LEASE OR BUILD TO SUIT

Property Features

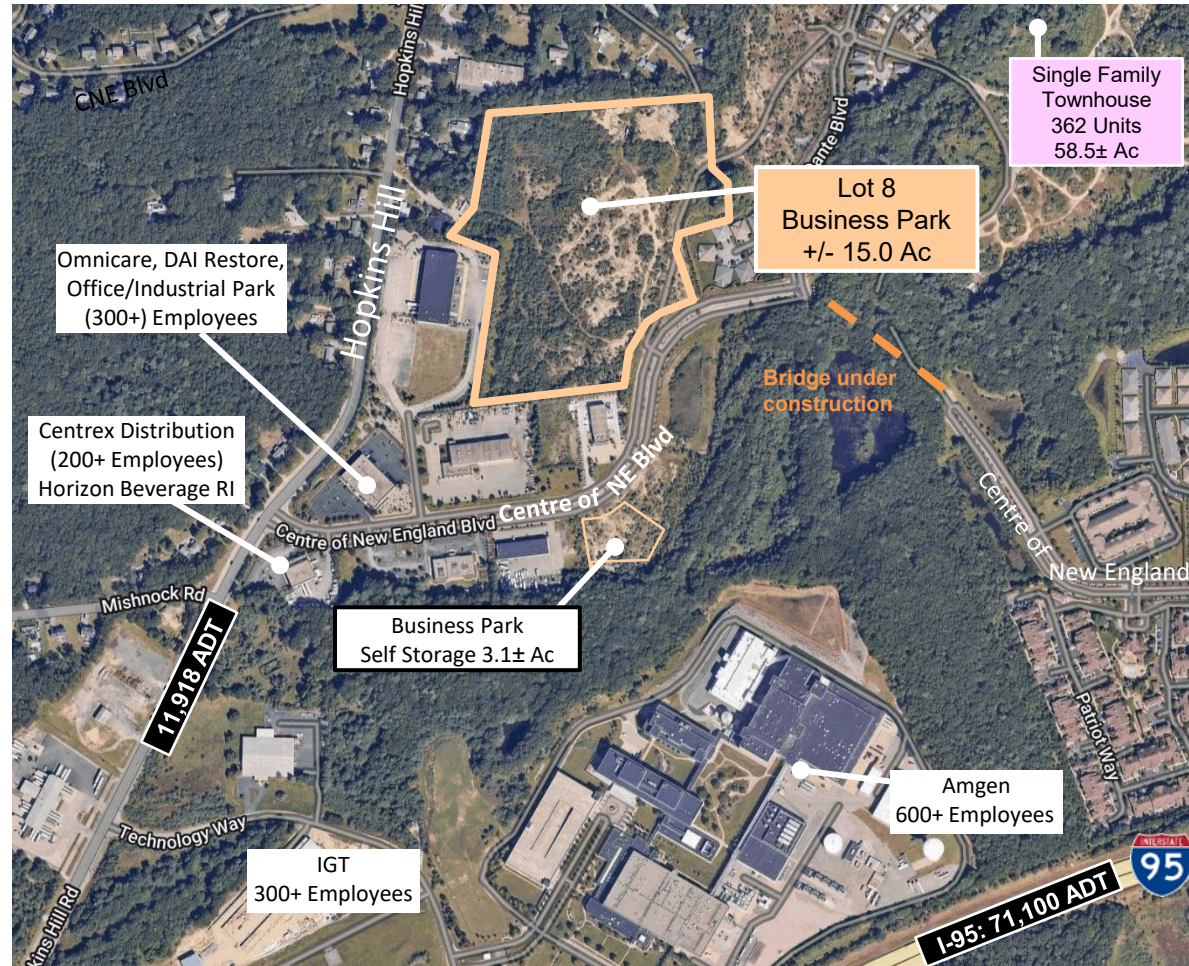
- LOCATED IN THE CENTRE OF NEW ENGLAND PARK
- ±15.0 ACRES OF BUSINESS PARK LAND THAT ALLOWS FOR RETAIL, FLEX AND INDUSTRIAL USE
- JUST OFF HOPKINS HILL AT CENTRE OF NE BOULEVARD
- APPROXIMATELY 950+- FEET ON CENTRE OF NE BOULEVARD
- GREAT ACCESS AND VISIBILITY
- NEIGHBORING TENANTS INCLUDE:
 - IGT HQ AMGEN CENTREX
 - DAI RESTORE OMNICARE
- 600+ FUTURE RESIDENTIAL UNITS AND RETAIL COMING

Traffic & Demos

- NEW LONDON TURNPIKE 26,000 VPD
- INTERSTATE 95 71,000 VPD
- ARNOLD ROAD 13,000 VPD

DEMOS	2 mi	3 mi	4 mi	5 mi
Pop	12,956	28,136	53,718	72,805
Med HH \$	\$99,647	\$100,810	\$97,805	\$99,618
Daytime Pop	5,298	8,564	16,033	24,094

15 ACRES BUSINESS PARK SITE



For more information, please contact:

Jeff Finan
 Partner
 401 273 7428
jfinan@hayessherry.com

Bill Greene
 Partner
 401 273 7429
bgreene@hayessherry.com

146 Westminster Street, 2nd floor
 Providence, RI 02903
 phone: 401 273 1980
www.hayessherry.com



OVERALL PLAN – LOTS 2, 3, 4, 5, 8

