

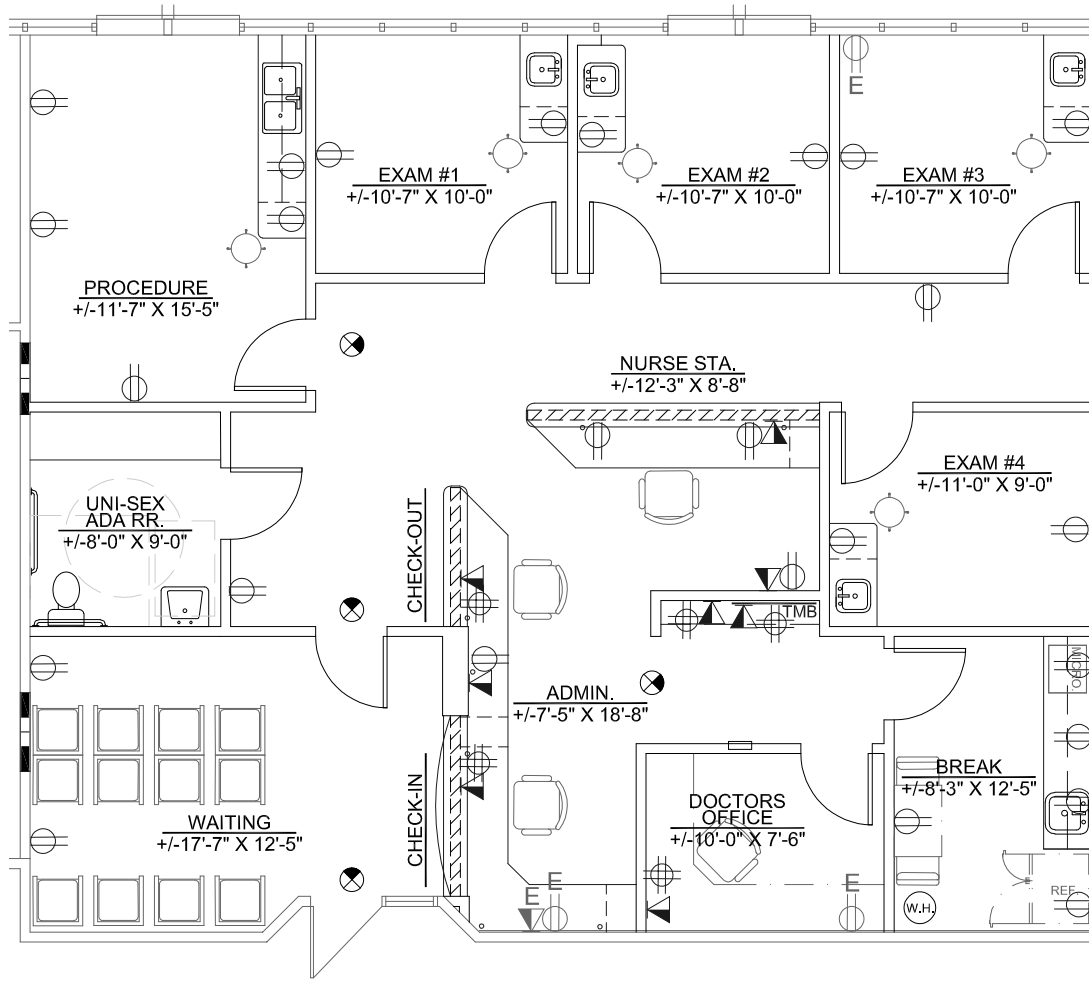
FOR LEASE

# Thunderbird Paseo Medical Plaza I

5601 W EUGIE AVE | GLENDALE, AZ

## Suite 212

SPEC SUITE



±1,693

SQUARE FEET

**RACHAEL THOMPSON**  
Senior Vice President

602.513.5122

[rachael.thompson@kidder.com](mailto:rachael.thompson@kidder.com)

**PERRY GABUZZI, CCIM**  
Executive Vice President

602.513.5116

[perry.gabuzzi@kidder.com](mailto:perry.gabuzzi@kidder.com)

KIDDER.COM

This information supplied herein is from sources we deem reliable. It is provided without any representation, warranty, or guarantee, expressed or implied as to its accuracy. Prospective Buyer or Tenant should conduct an independent investigation and verification of all matters deemed to be material, including, but not limited to, statements of income and expenses. Consult your attorney, accountant, or other professional advisor.

**km** Kidder  
Mathews