

# Floor Plan – A0950 (East Tower)

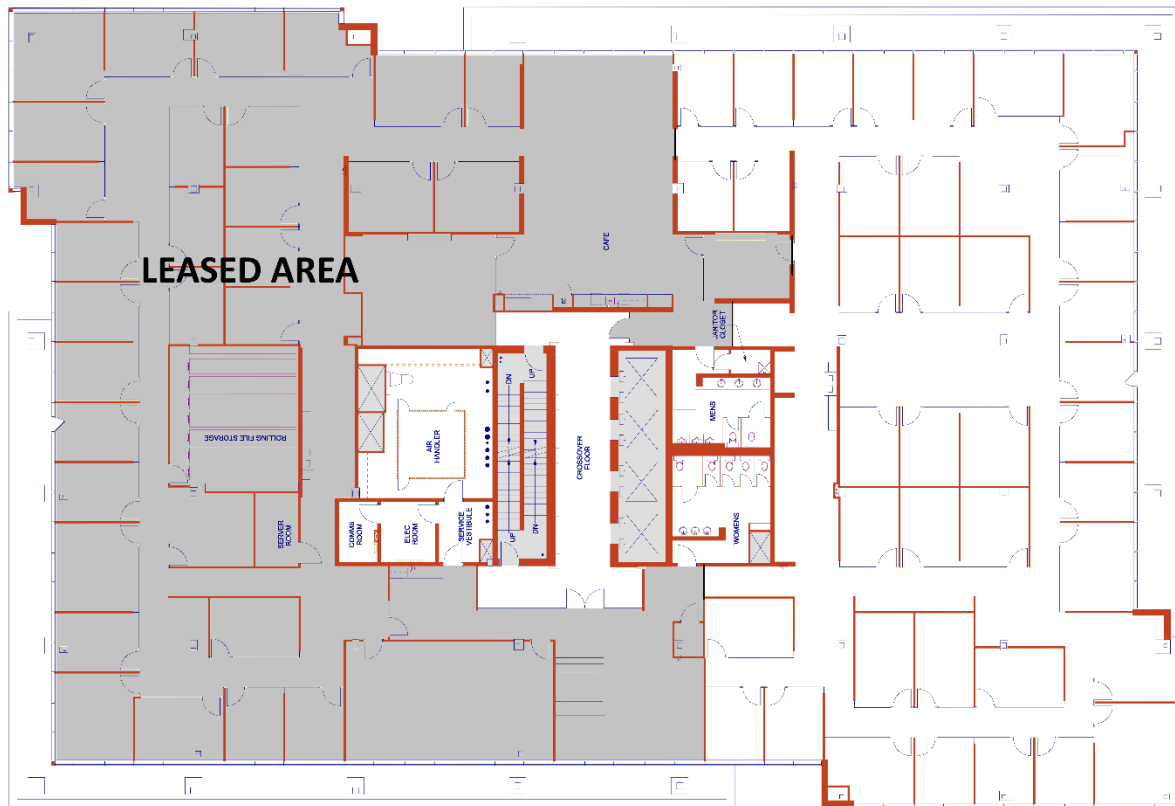
## AVAILABLE OFFICE SPACE

UNIT	AREA (SF)	RENT (PSF)	NOTES
A0950	10,412	Market	Remaining floor consists of 22 exterior offices, 16 interior offices and 1 tech center.

**TOTAL ADDITIONAL RENT: \$16.87 (psf/yr) (2026)**

**OPERATING COSTS: \$13.46 (psf/yr)**

**REALTY TAXES: \$3.41 (psf/yr)**



FOR MORE INFORMATION CONTACT

### MORGUARD

**BEN OLDFIELD**  
 Director, Leasing  
 403-213-9710  
[bolfield@morguard.com](mailto:bolfield@morguard.com)

### CBRE (Office Space Only)

**ANGUS FRASER**  
 Executive Vice President  
 403-750-0508  
[angus.fraser@cbre.com](mailto:angus.fraser@cbre.com)

VIEW THIS PROPERTY ONLINE [HERE](#)

