

**PROJECT SPECIFIC TID**  
(A POSSIBILITY FOR THE RIGHT PROJECT WITH CITY APPROVAL)



# 2011 26th Street North Wisconsin Rapids, WI 54494

## Property Features

- Highway 54 frontage
- High visibility with over 6,000 vehicles per day
- City sewer and water
- Ingress/egress access from Highway 54 approved by the City of Wisconsin Rapids
- Area business include: Dollar General, Home Depot, Harbor Freight, Pick'n Save

## Details

Many development opportunities available on this 11.5 acre lot including, but not limited to: day care center, overnight lodging, restaurant, convenience store, vehicle fuel station, retail center(s), health care clinic, funeral home and mixed-use development (multi-family with commercial space). This property has many businesses, banks, retail stores, healthcare facilities and restaurants nearby.

**PRICE**                    **\$349,500** (\$30,391.30/ACRE)

PARCEL SIZE              11.5 ACRES

PARCEL #                    3410549

ZONING                      B-2 GENERAL COMMERCIAL

For more information:

**Gregory Hedrich**

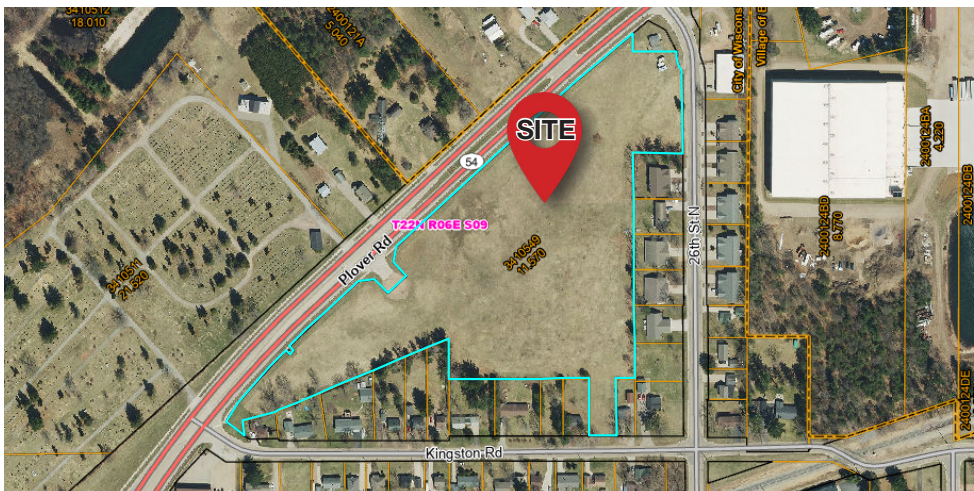
608.844.9063 • gregoryh@naipfefferle.com

**Tony "T.J." Morice, SIOR** ([About SIOR](#))

715.218.2900 • tjm@naipfefferle.com

NO WARRANTY OR REPRESENTATION, EXPRESS OR IMPLIED, IS MADE AS TO THE ACCURACY OF THE INFORMATION CONTAINED HEREIN, AND THE SAME IS SUBMITTED SUBJECT TO ERRORS, OMISSIONS, CHANGE OF PRICE, RENTAL OR OTHER CONDITIONS, PRIOR SALE, LEASE OR FINANCING, OR WITHDRAWAL WITHOUT NOTICE, AND OF ANY SPECIAL LISTING CONDITIONS IMPOSED BY OUR PRINCIPALS NO WARRANTIES OR REPRESENTATIONS ARE MADE AS TO THE CONDITION OF THE PROPERTY OR ANY HAZARDS CONTAINED THEREIN ARE ANY TO BE IMPLIED.

327 N. 17th Avenue, Suite 303  
Wausau, WI 54401  
715.261.2922  
[naipfefferle.com](http://naipfefferle.com)

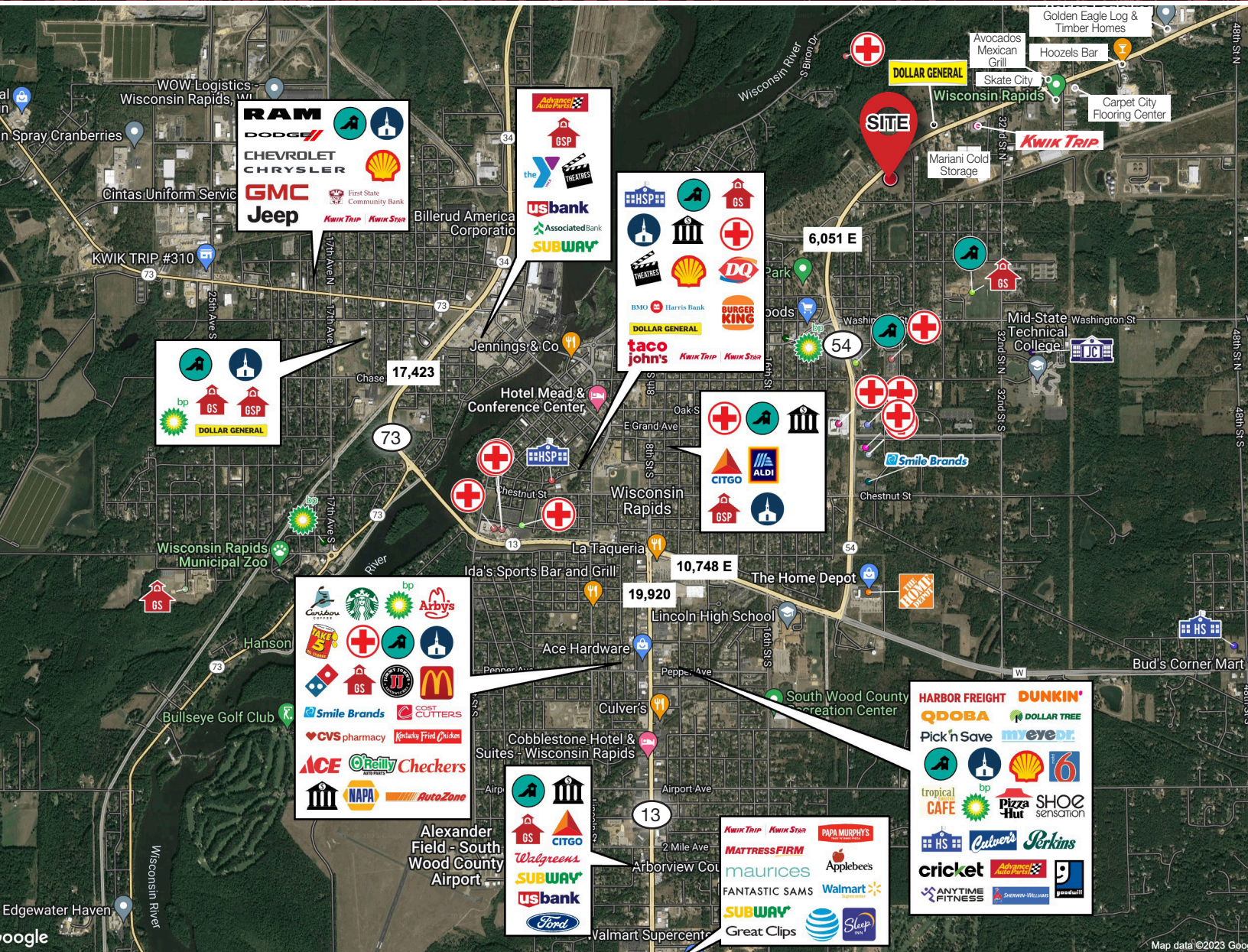


**Community History** - Earning the name "Wisconsin Rapids" in 1920, the area has a long history of lumber, cranberries, industry and innovation.

**Location** - We're well connected! Our central location and airport/highway/rail transportation links makes us a crossroads of commercial and leisure activity, providing broad-based opportunities for individuals and businesses.

**Economic Profile** - We have a clear mission - grow businesses, grow jobs, and create a robust economy and broadly shared prosperity. The Economic Profile, provided by the Wisconsin Economic Development Corporation, gives an overview of the infrastructure, resources and opportunities for businesses and residents in the Wisconsin Rapids area. Our Community Development office offers direct services to Wisconsin Rapids businesses, including permitting assistance, financing, advocacy, location assistance and the development of successful business districts.

**Workforce** - We have more than 34,500 workers in Wood County, as well as 415,000 workers who live within a 75-mile commute of our businesses. The Midwest work-ethic values reflected by these skilled and productive workers are embraced and nurtured in our community schools and colleges.

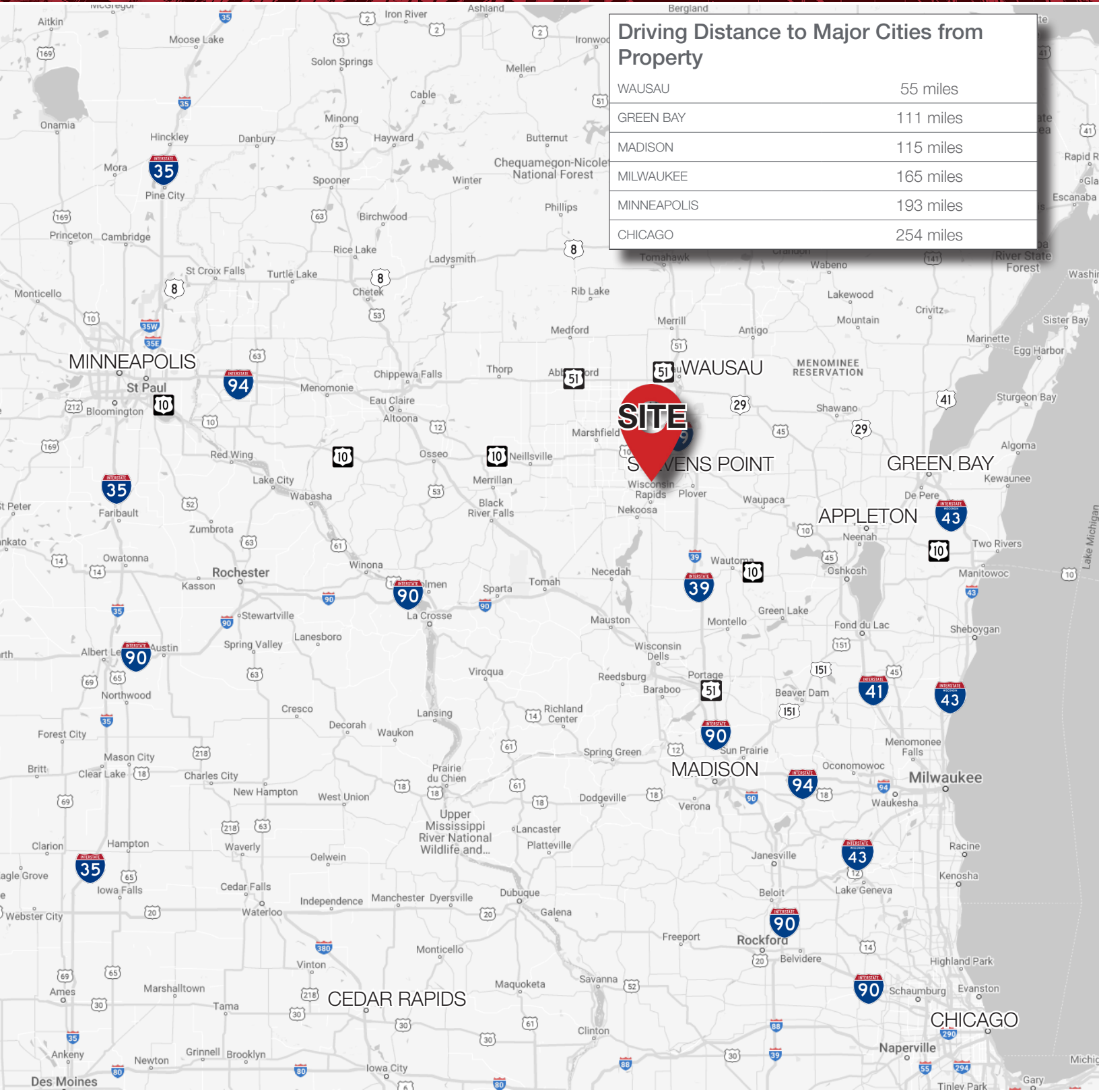


## 2024 Demographics

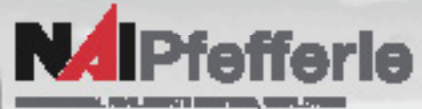
	1 MILE	3 MILES	5 MILES
ESTIMATED POPULATION	3,729	19,382	29,918
ESTIMATED HOUSEHOLDS	1,760	8,892	13,373
EST. AVERAGE HOUSEHOLD INCOME	\$73,165	\$79,734	\$88,013

## Daily Traffic Counts (Vehicles per Day)

HIGHWAY 54	6,051 E
HIGHWAY 13	19,920
HIGHWAY 73	17,423



# STATE OF WISCONSIN BROKER DISCLOSURE



Wisconsin law requires all real estate licensees to give the following information about brokerage services to prospective customers:

**Prior to negotiating on your behalf the Brokerage firm, or an agent associated with the firm, must provide you the following disclosure statement.**

## Disclosure to Customers

You are a customer of NAI Pfefferle (hereinafter Firm). The Firm is either an agent of another party in the transaction or a subagent of another firm that is the agent of another party in the transaction. A broker or a salesperson acting on behalf of the Firm may provide brokerage services to you. Whenever the Firm is providing brokerage services to you, the Firm and its broker and salespersons (hereinafter Agents) owe you, the customer, the following duties:

- The duty to provide brokerage services to you fairly and honestly.
- The duty to exercise reasonable skill and care in providing brokerage services to you.
- The duty to provide you with accurate information about market conditions within a reasonable time if you request it, unless disclosure of the information is prohibited by law.
- The duty to disclose to you in writing certain Material Adverse Facts about a Property, unless disclosure of the information is prohibited by law.
- The duty to protect your confidentiality. Unless the law requires it, the Firm and its Agents will not disclose your confidential information or the confidential information of other parties.
- The duty to safeguard trust funds and other property held by the Firm or its Agents.
- The duty, when negotiating, to present contract proposals in an objective and unbiased manner and disclose the advantages and disadvantages of the proposals.

Please review this information carefully. An Agent of the Firm can answer your questions about brokerage services, but if you need legal advice, tax advice, or a professional home inspection, contact an attorney, tax adviser, or home inspector. This disclosure is required by section 452.135 of the Wisconsin statutes and is for information only. It is a plain-language summary of the duties owed to a customer under section 452.133(1) of the Wisconsin statutes.

## Confidentiality Notice to Customers

The Firm and its Agents will keep confidential any information given to the Firm or its Agents in confidence, or any information obtained by the Firm or its Agents that a reasonable person would want to be kept confidential, unless the information must be disclosed by law or you authorize the Firm to disclose particular information. The Firm and its Agents shall continue to keep the information confidential after the Firm is no longer providing brokerage services to you.

No representation is made as to the legal validity of any provision or the adequacy of any provision in any specific transaction.

The following information is required to be disclosed by law:

1. Material Adverse Facts, as defined in section 452.01(5g) of the Wisconsin Statutes (see definition below).
2. Any facts known by the Firm or its Agents that contradict any information included in a written inspection report on the property or real estate that is the subject of the transaction.

To ensure that the Firm and its Agents are aware of what specific information you consider confidential, you may list that information below or provide that information to the Firm or its Agents by other means. At a later time, you may also provide the Firm or its Agents with other information you consider to be confidential.

### CONFIDENTIAL INFORMATION

\_\_\_\_\_

### NON-CONFIDENTIAL INFORMATION

(The following information may be disclosed to the Firm and its Agents)

\_\_\_\_\_

(Insert information you authorize to be disclosed, such as financial qualification information.)

## Definition of Material Adverse Facts

A "Material Adverse Fact" is defined in Wis. Stat. 452.01(5g) as an Adverse Fact that a party indicates is of such significance, or that is generally recognized by a competent licensee as being of such significance to a reasonable party, that it affects or would affect the party's decision to enter into a contract or agreement concerning a transaction or affects or would affect the party's decision about the terms of such a contract or agreement.

An "Adverse Fact" is defined in Wis. Stat. 452.01(1a) as a condition or occurrence that a competent licensee generally recognizes will significantly and adversely affect the value of the property, significantly reduce the structural integrity of improvements to real estate, or present a significant health risk to occupants of the property; or information that indicates that a party to a transaction is not able to or does not intend to meet his or her obligations under a contract or agreement made concerning the transaction.

## Notice About Sex Offender Registry

You may obtain information about the sex offender registry and persons registered with the registry by contacting the Wisconsin Department of Corrections on the Internet at <http://www.doc.wi.gov> or by telephone at 608-240-5830.



715.261.2922 | [www.naipfefferle.com](http://www.naipfefferle.com)

Information shown herein was provided by EqualLender and/or filed public and has not been verified by the broker unless otherwise indicated.