



Rochester Industrial Center / For Sale or Lease

8-10 Cairn Street, Rochester NY 14611

INDUSTRIAL BUILDING LOCATED IN THE CITY OF ROCHESTER, NY

- MULTI-TENANT INDUSTRIAL BUILDING
- SEVERAL TENANTS IN PLACE
- MULTIPLE LOADING DOCKS
- MULTIPLE DRIVE-IN DOORS
- HEAVY 3-PHASE POWER
- SPRINKLER SYSTEM
- ON-SITE PARKING

Property Type: Warehouse,
Manufacturing, Distribution

Building: 308,101 +/-SF

Year Built: 1910 to 1969

Acreage: 14.17

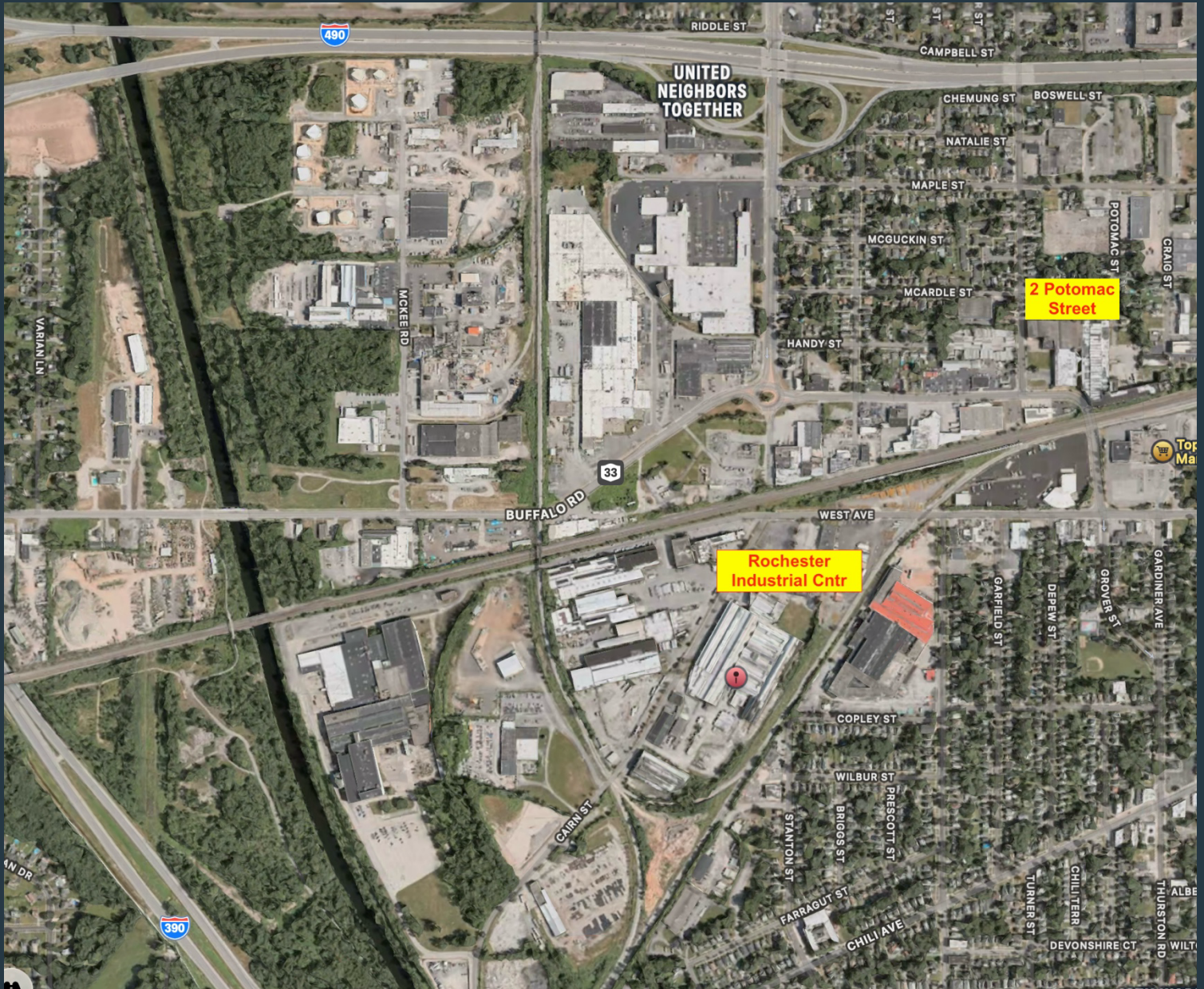
Lot Size: 945.65' x 219.44'

Zoning: M-1 Industrial

Tax ID: 120.46-1-4.001

R/E Taxes: \$32,995.43

ALL INFORMATION IS FROM SOURCES DEEMED RELIABLE BUT NO WARRANTY OR REPRESENTATION IS MADE AS TO THE ACCURACY THEREOF.



James (Jim) P. Pappas
President, Lic. Real Estate Broker

900 Jefferson Rd, Suite 203
Rochester, NY 14623
Phone: (585) 424-6007
Email: jpappas@ccim.net
www.jimpappas.net

Trusted | Reliable | Experienced



James (Jimmy) T. Pappas
Licensed Real Estate Salesperson

A proud CCIM Designee



For more than 30 Years!