

PLYMOUTH PONDS IV

MN
MPLS

3600 Holly Lane
Plymouth, MN



FOR LEASE

Suite 40

74,161 SF



LEASED BY



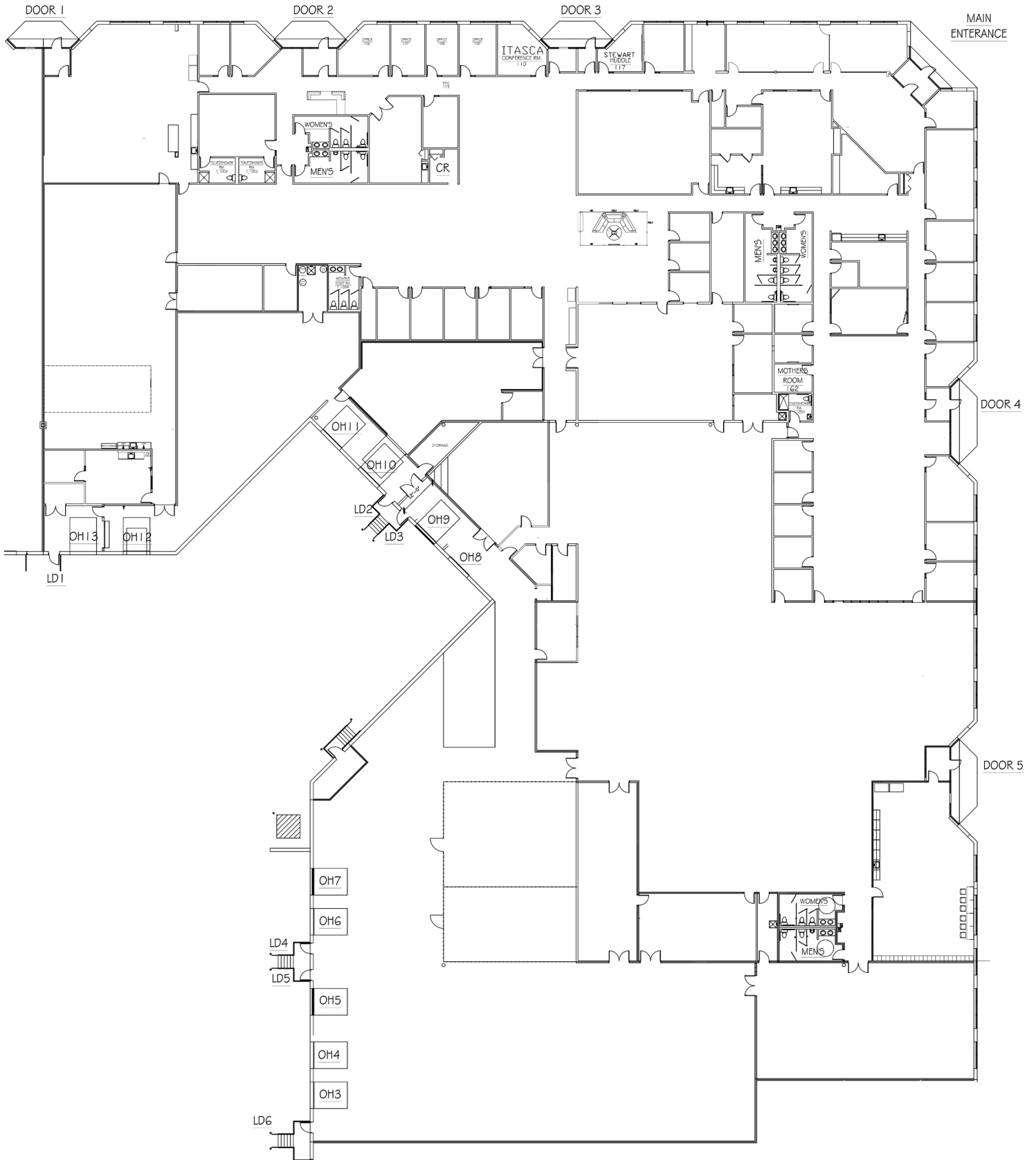


PROPERTY HIGHLIGHTS

- Convenient location near Plymouth City Center and retail development
- Quick access to Highway 55 and I-494
- Master-planned Business Park consisting of seven 24' clear buildings totaling more than 700,000 SF and one 18' clear, 83,000 SF showroom building

SPECIFICATIONS

Building	110,180 SF Total
Available SF	54,478 SF Office/Lab
	<u>19,683 SF Warehouse</u>
	74,161 SF Total
Clear Height	24'
Lease Rates	Negotiable
Loading	11 Dock Height Doors
Power	1200 amp, 48022/277 volt
2026 Tax/CAM	\$3.60 Tax
	\$2.05 CAM
	\$5.65 Total



1 STRYKER ENT FLOOR PLAN
 A-1 SCALE: 1/16" = 1'-0"



CONTACT INFORMATION

3600 Holly Lane
Plymouth, MN

Brent Masica

Executive Managing Director
952 893 8231
brent.masica@cushwake.com

Jason Meyer

Executive Director
952 820 8735
jason.j.meyer@cushwake.com

This document is for informational purposes only and does not constitute an offer or acceptance of a lease. Any lease agreement must be in writing and signed by the landlord. No representations or warranties are made except as expressly stated in a signed lease. Information is provided "as is" and may be subject to errors or change without notice.



LEASED BY

