

OFFICE PROPERTY FOR LEASE

Professional Medical Office For Lease in Bloomfield Hills

43750 WOODWARD AVE
BLOOMFIELD TOWNSHIP, MI 48302



Medical Suite - Ready for Move-In

Direct Entry Suite

Former Pediatric

Monument Sign Available



P.A. COMMERCIAL
Corporate & Investment Real Estate



OFFERING SUMMARY

Available SF:	2,008 SF
Building Size:	6,670 SF
Lease Rate:	\$20.00 SF/yr (MG)
Zoning:	Office
Year Built:	1984
Lot Size:	0.82 Acres
Market:	Detroit
Submarket:	Pontiac

PROPERTY OVERVIEW

Professional Medical Office ready for immediate occupancy. This upscale office building is comprised of ceramic & glass block exterior design. All suites have direct entry from ample parking lot. New monument sign soon.

Suite 104 is a former Pediatric clinic.

LOCATION OVERVIEW

Located in the Medical Office District on Woodward Ave between Square Lake Rd and St Joe's Trinity Hospital.

PROPERTY HIGHLIGHTS

- Medical Suite - Ready for Move-In
- Direct Entry Suite
- Former Pediatric
- Monument Sign Available

43750 WOODWARD AVE, BLOOMFIELD TOWNSHIP, MI

// AVAILABLE SPACES

LEASE TYPE | MG

TOTAL SPACE | 2,008 SF

LEASE TERM | Negotiable

LEASE RATE | \$20.00 SF/yr



SUITE	TENANT	SIZE (SF)	LEASE TYPE	LEASE RATE
Suite 104	Available	2,008 SF	Modified Gross	\$20.00 SF/yr

43750 WOODWARD AVE, BLOOMFIELD TOWNSHIP, MI

// ADDITIONAL PHOTOS





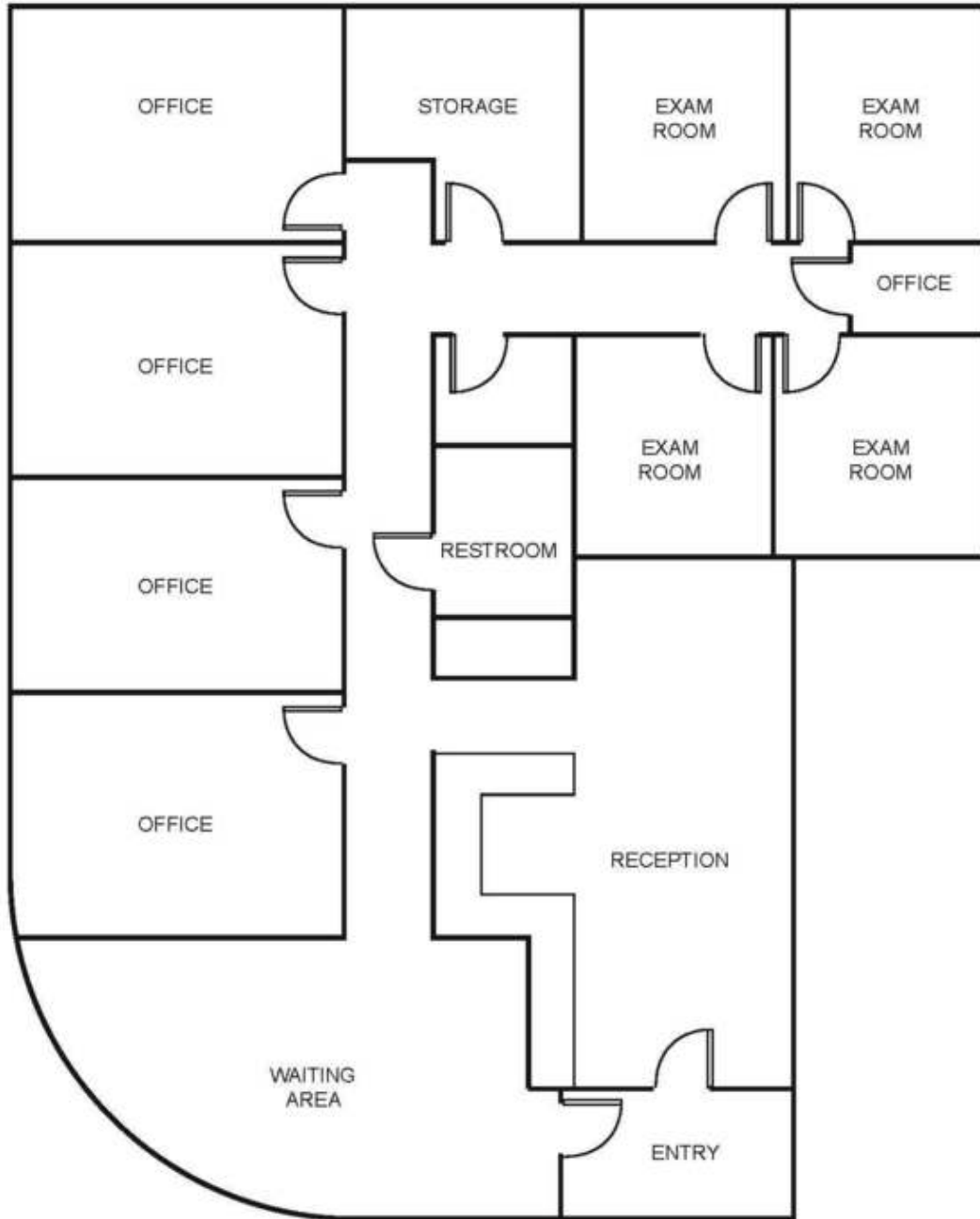
P.A. COMMERCIAL
Corporate & Investment Real Estate

26555 Evergreen Road, Suite 1500 • Southfield, MI 48076

FOR MORE INFORMATION CONTACT:

DAN BLUGERMAN, CCIM Senior Associate
dan@pacommercial.com (P) 248.987.5418 (C) 248.701.9001

We obtained the information above from sources we believe to be reliable. However, we have not verified its accuracy and make no guarantee, warranty or representation about it. It is submitted subject to the possibility of errors, omissions, change of price, rental or other conditions, prior sale, lease or financing, or withdrawal without notice. We include projections, opinions, assumptions or estimates for example only, and they may not represent current or future performance of the property. You and your tax and legal advisors should conduct your own investigation of the property and transaction.



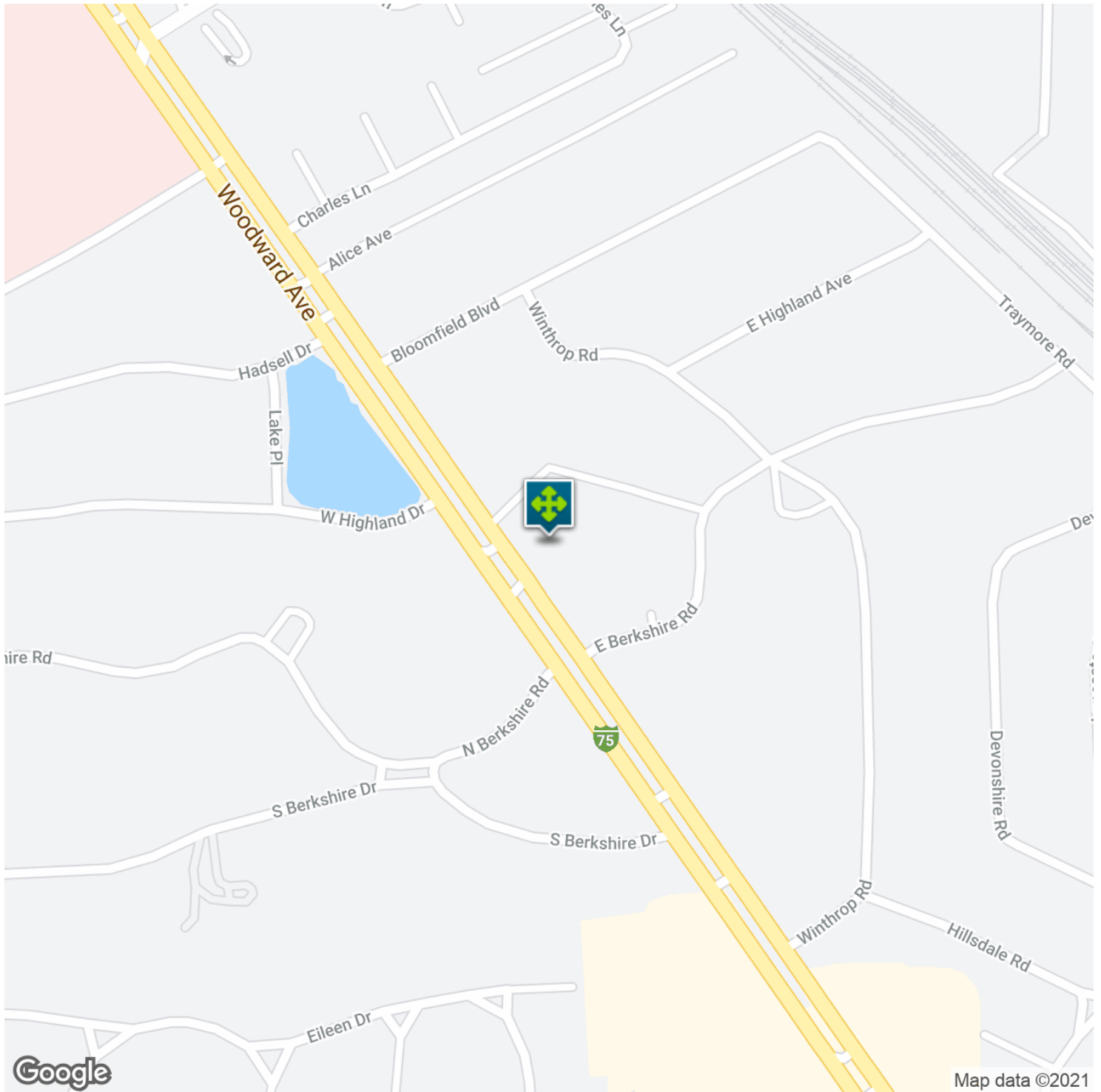
P.A. COMMERCIAL
Corporate & Investment Real Estate

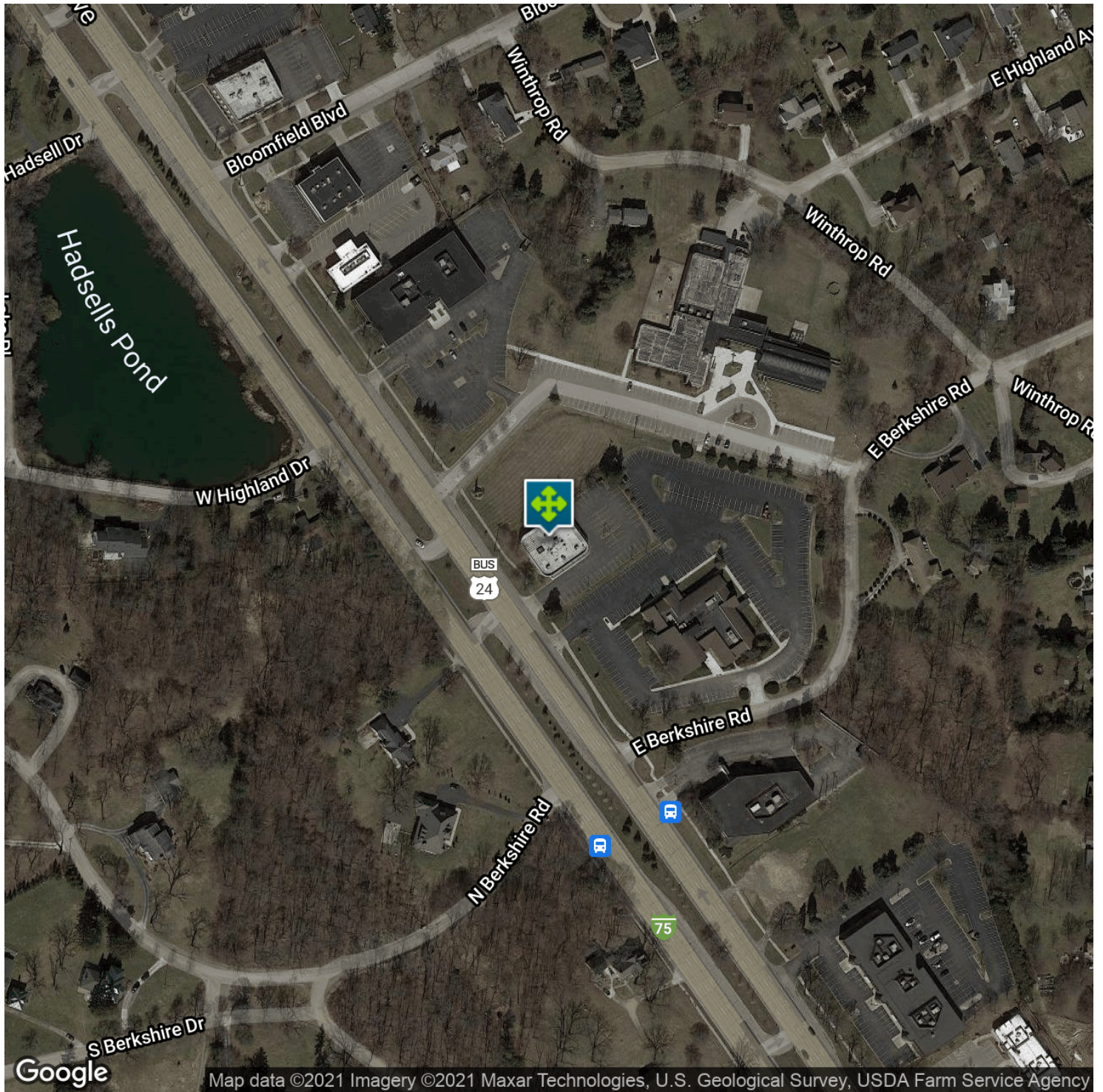
26555 Evergreen Road, Suite 1500 • Southfield, MI 48076

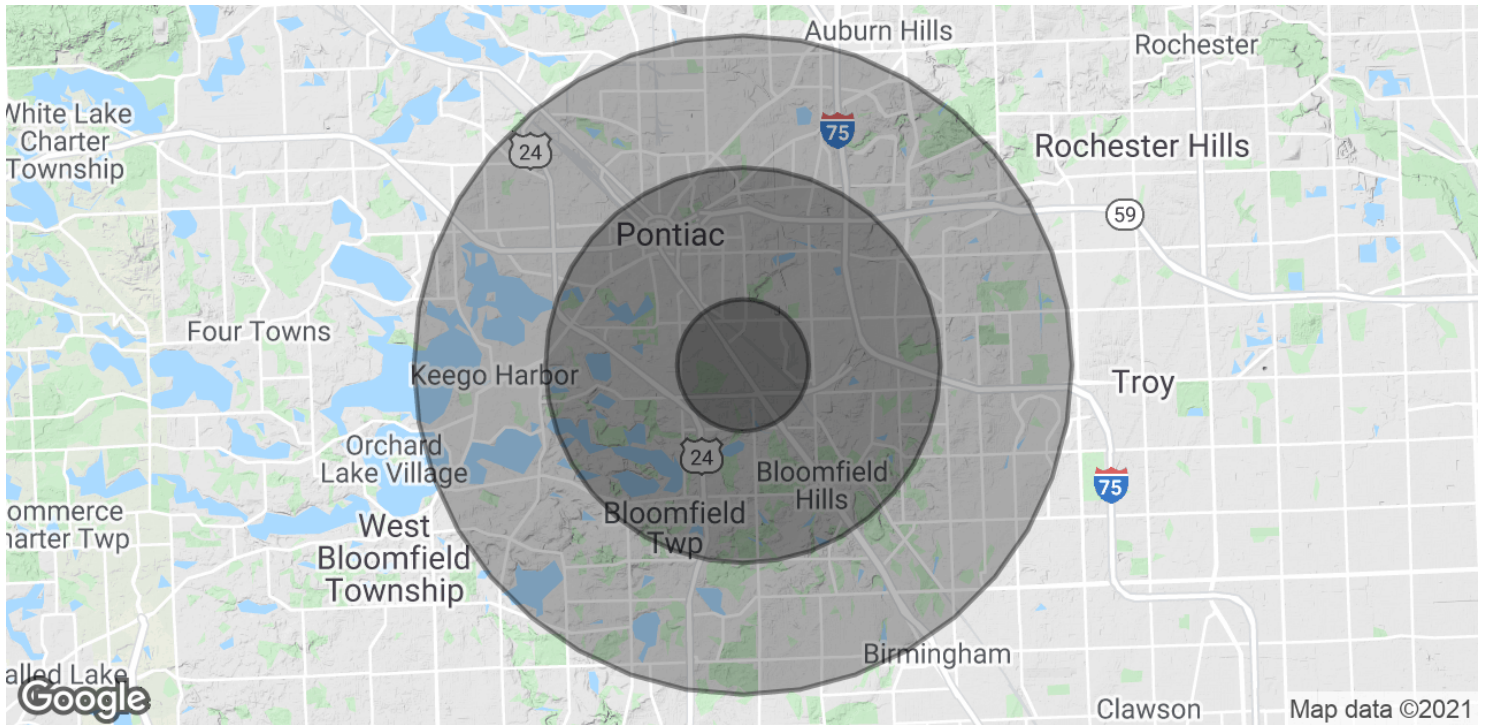
FOR MORE INFORMATION CONTACT:

DAN BLUGERMAN, CCIM Senior Associate
dan@pacommercial.com (P) 248.987.5418 (C) 248.701.9001

We obtained the information above from sources we believe to be reliable. However, we have not verified its accuracy and make no guarantee, warranty or representation about it. It is submitted subject to the possibility of errors, omissions, change of price, rental or other conditions, prior sale, lease or financing, or withdrawal without notice. We include projections, opinions, assumptions or estimates for example only, and they may not represent current or future performance of the property. You and your tax and legal advisors should conduct your own investigation of the property and transaction.







POPULATION

	1 MILE	3 MILES	5 MILES
Total Population	5,477	53,144	156,405
Average age	40.6	39.7	39.1
Average age (Male)	39.2	38.6	38.1
Average age (Female)	42.6	41.0	40.3

HOUSEHOLDS & INCOME

	1 MILE	3 MILES	5 MILES
Total households	2,370	21,535	60,824
# of persons per HH	2.3	2.5	2.6
Average HH income	\$84,939	\$91,317	\$101,082
Average house value	\$100,059	\$298,440	\$354,710

* Demographic data derived from 2010 US Census