

Industrial Land
FOR SALE

BROAD ST

Crawfordville, GA 30631

35.593 AC



Rhett Delk
678.438.0537 mobile
rdelk@cresa.com



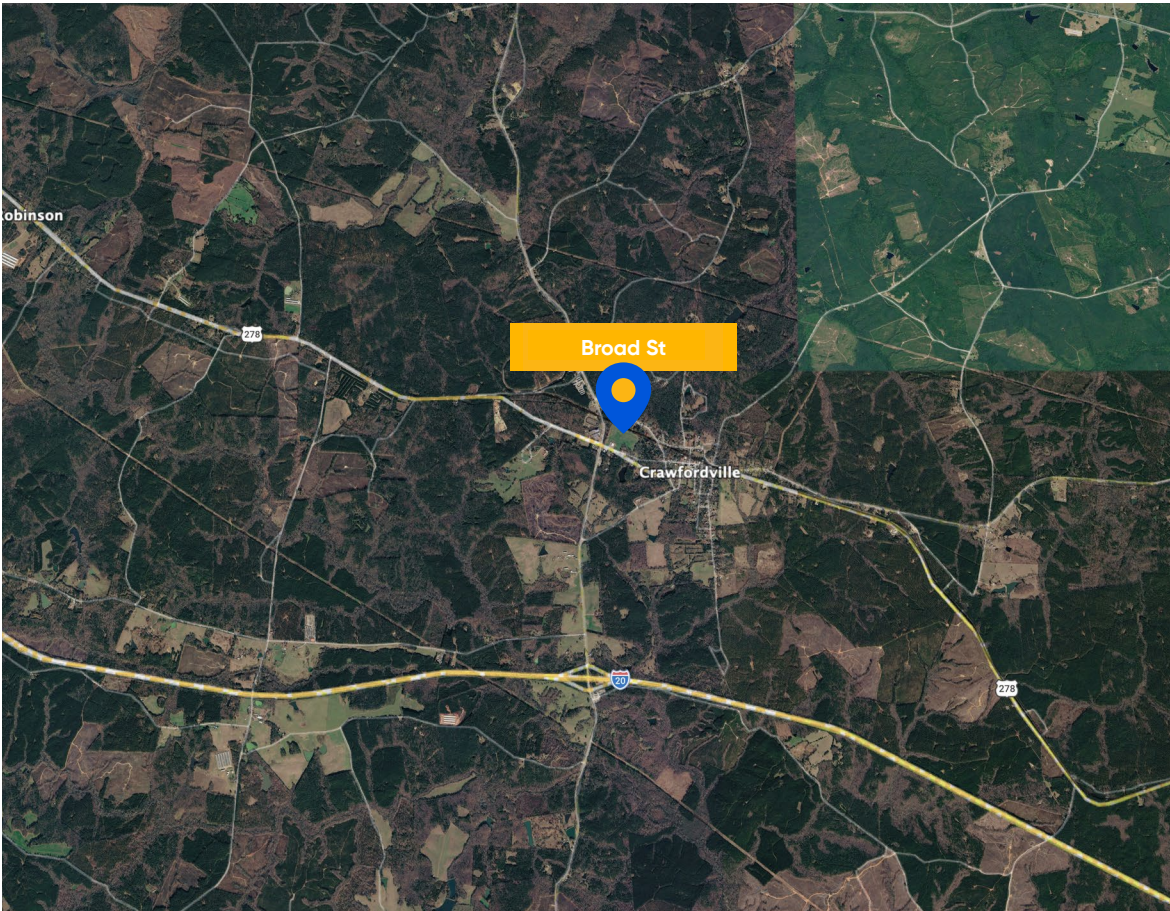
Scott Polinski
404.784.2633 mobile
spolinski@cresa.com

cresa ::::

Broad Street is strategically positioned in Crawfordville, offering a highly accessible location for industrial users seeking connectivity across Northeast Georgia. Situated within Taliaferro County, the property benefits from a business-friendly, low-congestion environment ideal for manufacturing, warehousing, and distribution operations.

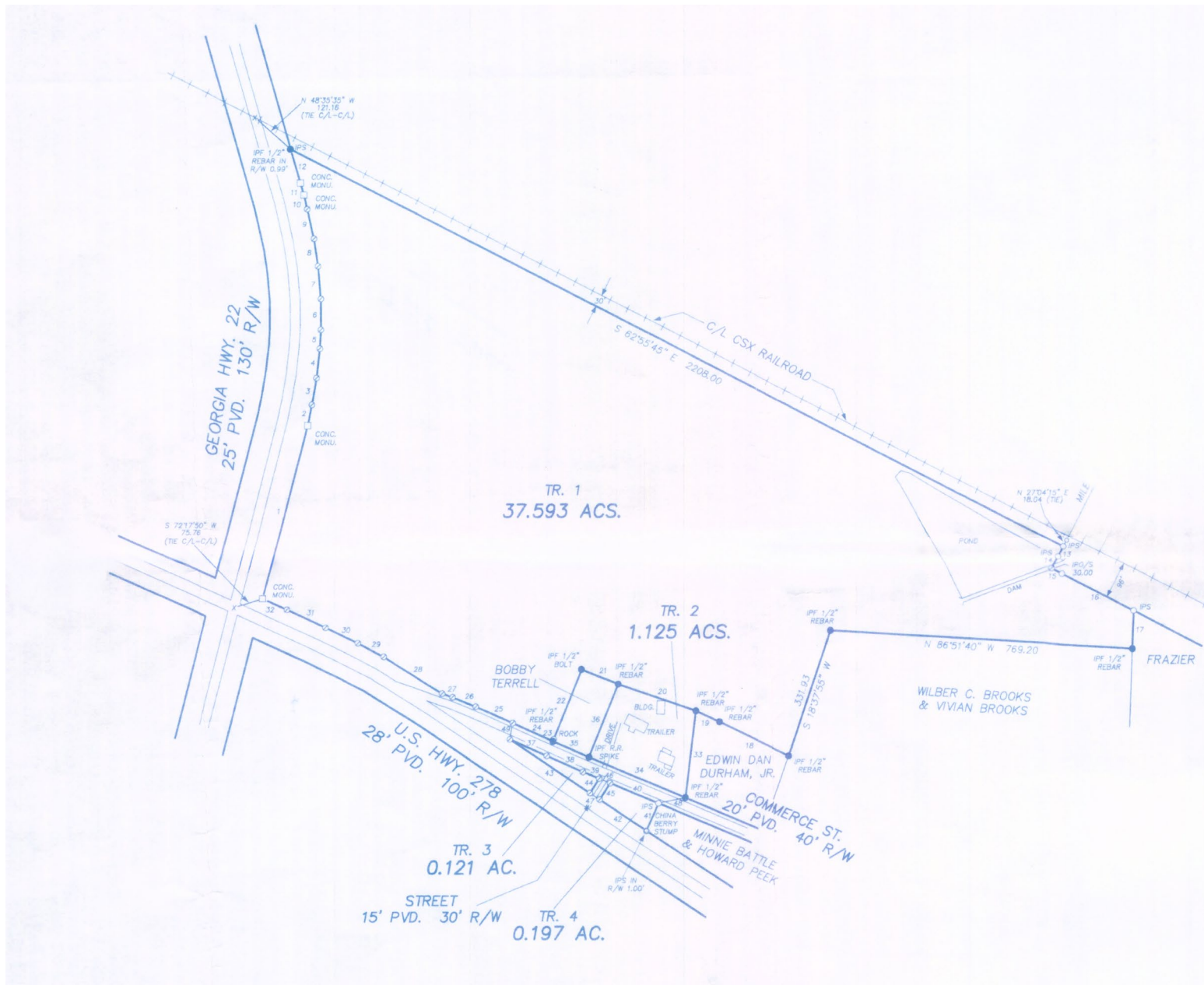
The site provides convenient access to key regional transportation corridors, including Interstate 20, which connects directly to major logistics hubs such as Augusta and Atlanta. This proximity allows for efficient movement of goods throughout the Southeast, while maintaining lower operating costs compared to more densely populated industrial markets.

Additionally, the property's location supports access to a regional labor pool and nearby support services, making it well-suited for a variety of industrial users looking to establish or expand operations in a growing, strategically located Georgia submarket.



Property Highlights

- 35.593 AC
- Parcel ID: 023-021Y
- Zoned: I-5



BROAD ST



94.6 Miles
From Downtown



96.5 Miles
From ATL Airport

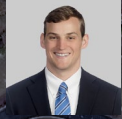


57.1 Miles
From Augusta

Crawfordville

oresa

For More Information



Rhett Delk
678.438.0537 mobile
rdelk@cresa.com



Scott Polinski
404.784.2633 mobile
spolinski@cresa.com

BROAD ST

Crawfordville, GA 30631

35.593 AC

Cresa © 2026. All rights reserved. The information contained in this document has been obtained from sources believed reliable. While Cresa does not doubt its accuracy, Cresa has not verified it and makes no guarantee, warranty, or representation about it. It is your responsibility to independently confirm its accuracy and completeness. Any projections, opinions, assumptions or estimates used are for example only and do not represent the current or future performance of the property. The value of this transaction to you depends on tax and other factors which should be evaluated by your tax, financial and legal advisors. You and your advisors should conduct a careful, independent investigation of the property to determine to your satisfaction the suitability of the property for your needs.

cresa 