

6.5% Broker Commission



CANYON EAST LOGISTICS

17433 63RD AVENUE EAST, PUYALLUP, WA



FOR
LEASE

THAD MALLORY, SIOR
425.362.1410
thad.mallory@nmrk.com

TAYLOR HOFF, SIOR
425.362.1388
taylor.hoff@nmrk.com

CAM WARREN
425.362.1395
cam.warren@nmrk.com

MORGAN RICHEY, SIOR
425.362.1409
morgan.richey@nmrk.com

**127,843 SF WHSE
WITH 2.40 ACRE YARD**

AVAILABLE NOW

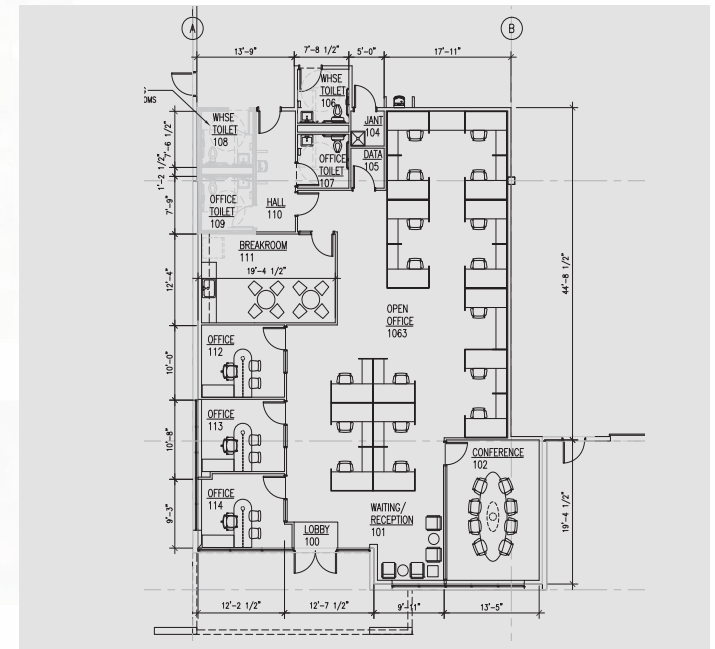
SITE PLAN



COLUMBIA BUILDING

- 127,843 SF Available
- 2,916 SF Spec Office
- 28 Dock High Doors
- 1 Grade Level Door
- 36' Clear Height
- 7" Reinforced Slab
- Warehouse Restrooms
- LED Warehouse Lighting - 20 FC
- 2.40 Acre Paved Yard

OFFICE FLOOR PLAN 2,916 SF SPEC OFFICE



SITE PLAN



AVAILABLE
2.40AC

AVAILABLE
127,843 SF

**COLUMBIA
BUILDING**

**CHELAN
BUILDING
(LEASED)**

LEASED

DRIVETIME MAP



APPROXIMATE DRIVE TIMES

SUMNER IND. DISTRICT	15 MINUTES
TACOMA	20 MINUTES
OLYMPIA	40 MINUTES
SEATAC INT'L AIRPORT	40 MINUTES
SEATTLE	60 MINUTES



NEIGHBORING TENANTS

