

# OFFICE FOR SALE

GREENWOOD IN PROFESSIONAL OFFICE 373  
373 MERIDIAN PARKE LANE, SUITE B  
GREENWOOD, IN 46142



**AVAILABLE**

AG Commercial Real Estate

FOR SALE

AG COMMERCIAL REAL ESTATE, LLC  
1475 W Oak St, #164  
Zionsville, IN 46077



**PRESENTED BY:**

**ANDREW GUTWEIN, CCIM**  
Managing Broker  
office: (317) 344-9393  
cell: 317-344-9393  
Andrew@AGCRE.com  
RB14035840, Indiana

The calculations and data presented are deemed to be accurate, but not guaranteed. They are intended for the purpose of illustrative projections and analysis. The information provided is not intended to replace or serve as substitute for any legal, accounting, investment, real estate, tax or other professional advice, consultation or service. The user of this software should consult with a professional in the respective legal, accounting, tax or other professional area before making any decisions.

# TABLE OF CONTENTS

**ANDREW GUTWEIN, CCIM**

MANAGING BROKER

O: (317) 344-9393

C: 317-344-9393

Andrew@AGCRE.com

RB14035840, Indiana

Property Summary	3
Business Map	4
Custom Page 1	5
Breakroom	6
Floorplan	7



# PROPERTY SUMMARY

Greenwood IN Professional Office 373  
373 Meridian Parke Lane, Suite B | Greenwood, IN 46142



## Property Summary

Condo SF:	5,864
Lease Rate:	\$18.00
Price:	\$999,950
Year Built:	1998
Zoning:	CM

## Property Overview

Built in 1998, this condo unit has been meticulously cared for by its original owners and is now ready for a new vision. The space is designed for high-volume efficiency and patient comfort, featuring a shared lobby with two separate waiting rooms and private entrances.

The interior is comprehensively equipped with:

Medical Facilities: 13 exam rooms and 2 dedicated nurse stations.

Administrative Space: 4 physician offices, a large file room/reception area, and a breakroom.

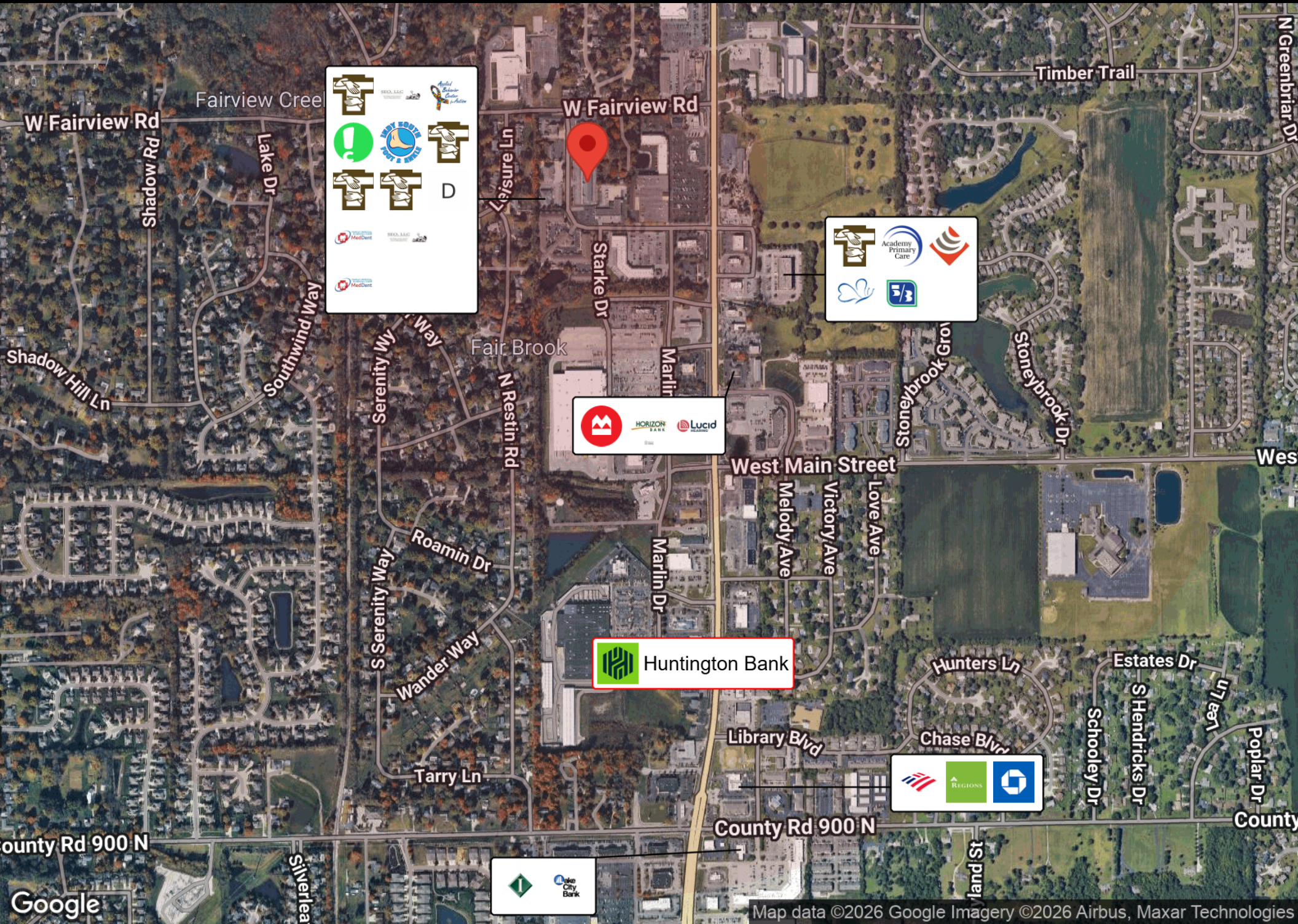
Bonus Storage: A basement provides significant additional storage capacity.

## Location Overview

Situated within a thriving development inclusive of retail, medical, and professional services, this property benefits from high visibility and excellent accessibility. The surrounding area boasts strong demographics, making it an ideal location for service providers looking to tap into a robust local market.

# BUSINESS MAP

Greenwood IN Professional Office 373  
373 Meridian Parke Lane, Suite B | Greenwood, IN 46142





Demographics

	1 Mile	3 Miles	5 Miles
Total Population	7,712	77,009	171,389
Total Units	3,178	32,808	71,506
Median Income	\$98,338	\$87,575	\$85,432

# BREAKROOM

Greenwood IN Professional Office 373  
373 Meridian Parke Lane, Suite B | Greenwood, IN 46142

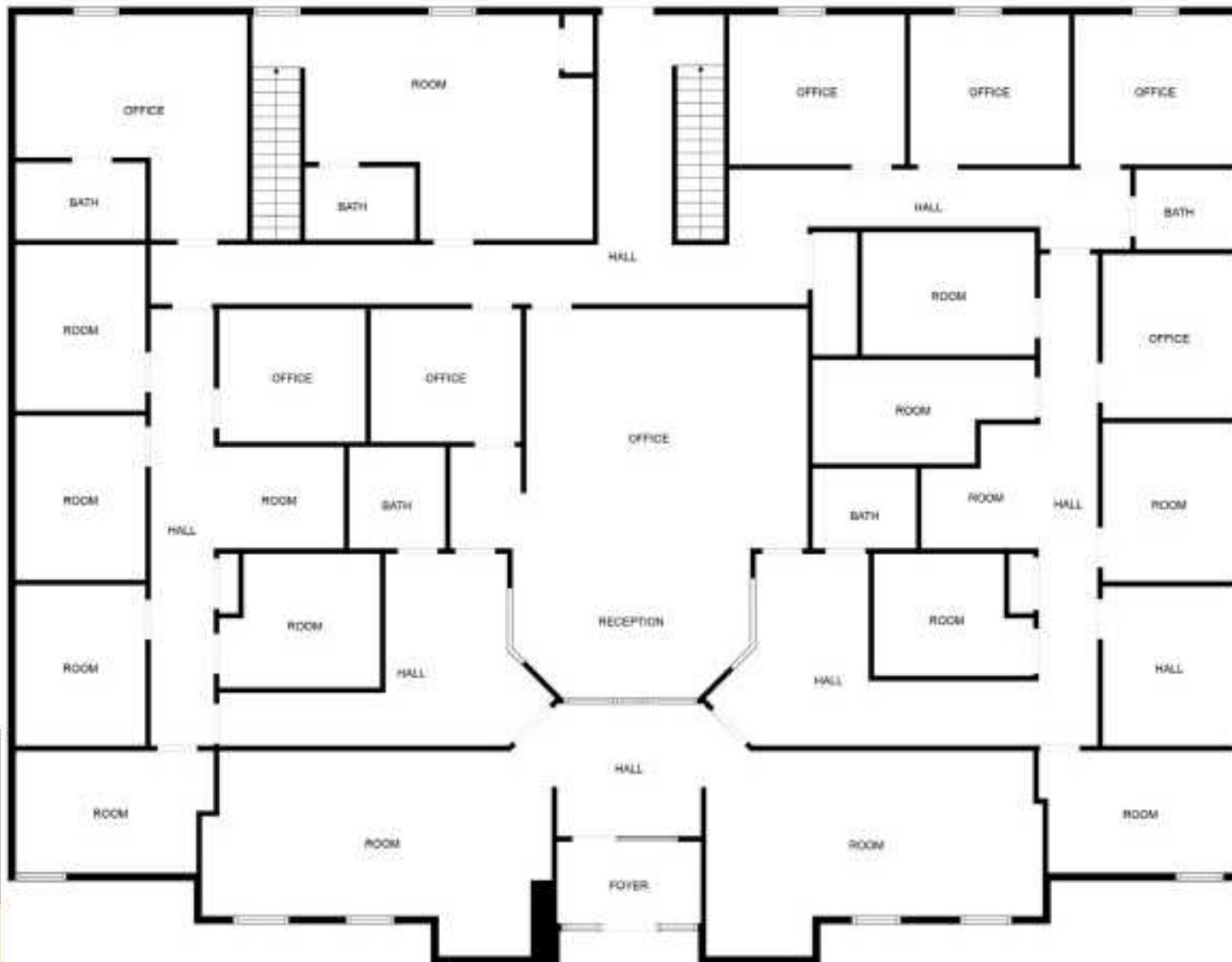


ANDREW GUTWEIN, CCIM  
(317) 344-9393  
Andrew@AGCRE.com



# FLOORPLAN

Greenwood IN Professional Office 373  
373 Meridian Parke Lane, Suite B | Greenwood, IN 46142



FLOORPLAN  
SUITE B

5,864 SF

**AG**  
COMMERCIAL REAL ESTATE

**AVAILABLE**

AGCRE.com | aRealEstate.com

ANDREW GUTWEIN, CCIM  
(317) 344-9393  
Andrew@AGCRE.com

