

17,500 sq. ft. of Office Space For Lease

Minimum Division 1000 sq. ft.

560 Broadhollow Rd, Melville



Specifications:

Building Size: ± 52,500/sf
Available Space: 1000 - 17,500 sf
Ceiling height: ± 12'
Parking: 210+ spaces

Pricing & Timing:

Occupancy: Immediate
Lease Price : \$22.75/sf Plus Electric
Lease Term: 5-10 Years

New tenants will benefit from updated common areas and ability to customize suite build outs.

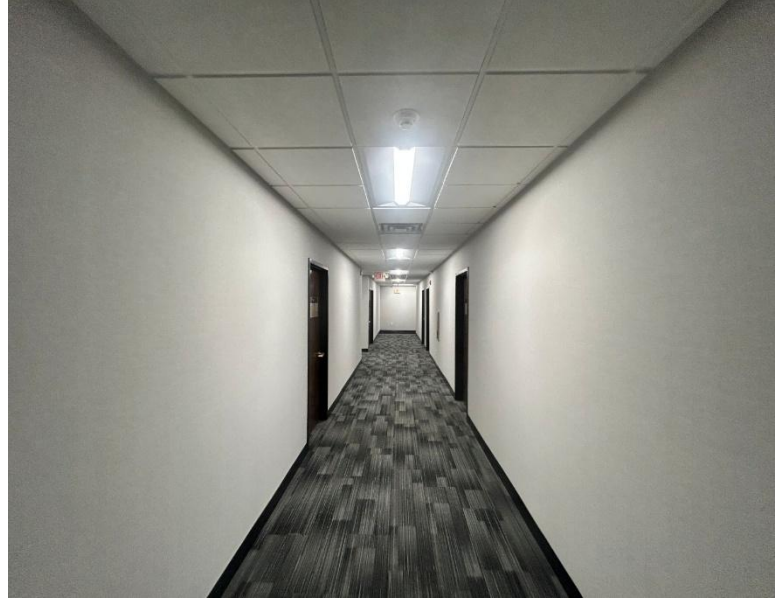
- Available units vary from 1000 sf - 17,500 sf
- Two units with private entrances each private entrance space is a minimum of 3,000 sf
- Unique, slender floor plates ensure full window lines and natural light for all suite sizes
- Frontage and access to both Broadhollow Road and Walt Whitman Road
- Ample parking with 210+ spaces
- Centrally located with close proximity to major highways, restaurants and shops
- Conveniently located within 1 mile from the Long Island Expressway
- Bus stop located adjacent to building providing access to LIRR



James Parnes
RE Salesperson
516-732-7864 (cell)
631-293-3700 x45
jp@schackerrealty.com



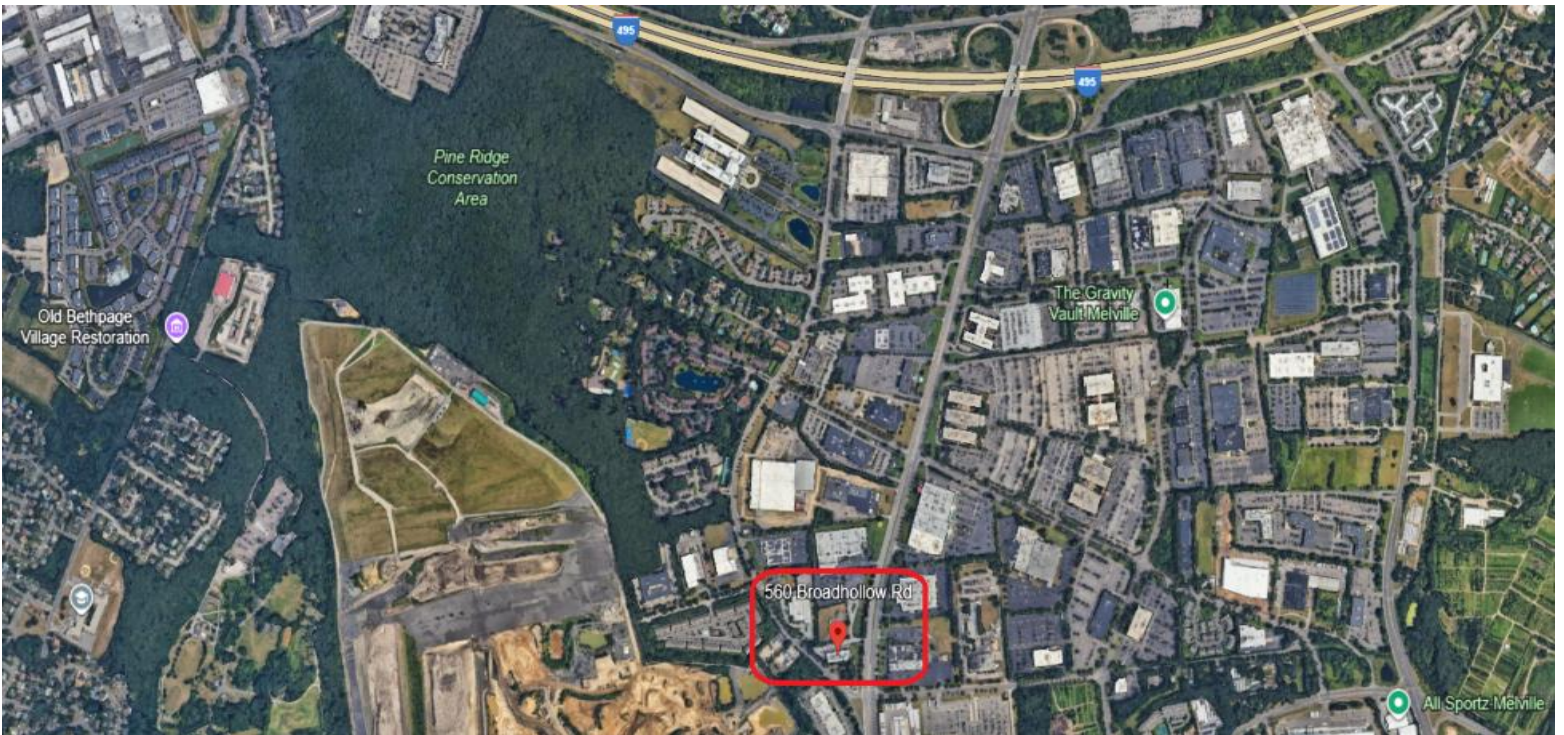
Anthony Filipelli
RE Salesperson
516-312-2339 (cell)
631-293-3700 x30
af@schackerrealty.com



James Parnes
RE Salesperson
516-732-7864 (cell)
631-293-3700 x45
jp@schackerrealty.com



Anthony Filipelli
RE Salesperson
516-312-2339 (cell)
631-293-3700 x30
af@schackerrealty.com



James Parnes
 RE Salesperson
 516-732-7864 (cell)
 631-293-3700 x45
 jp@schackerrealty.com



Anthony Filipelli
 RE Salesperson
 516-312-2339 (cell)
 631-293-3700 x30
 af@schackerrealty.com