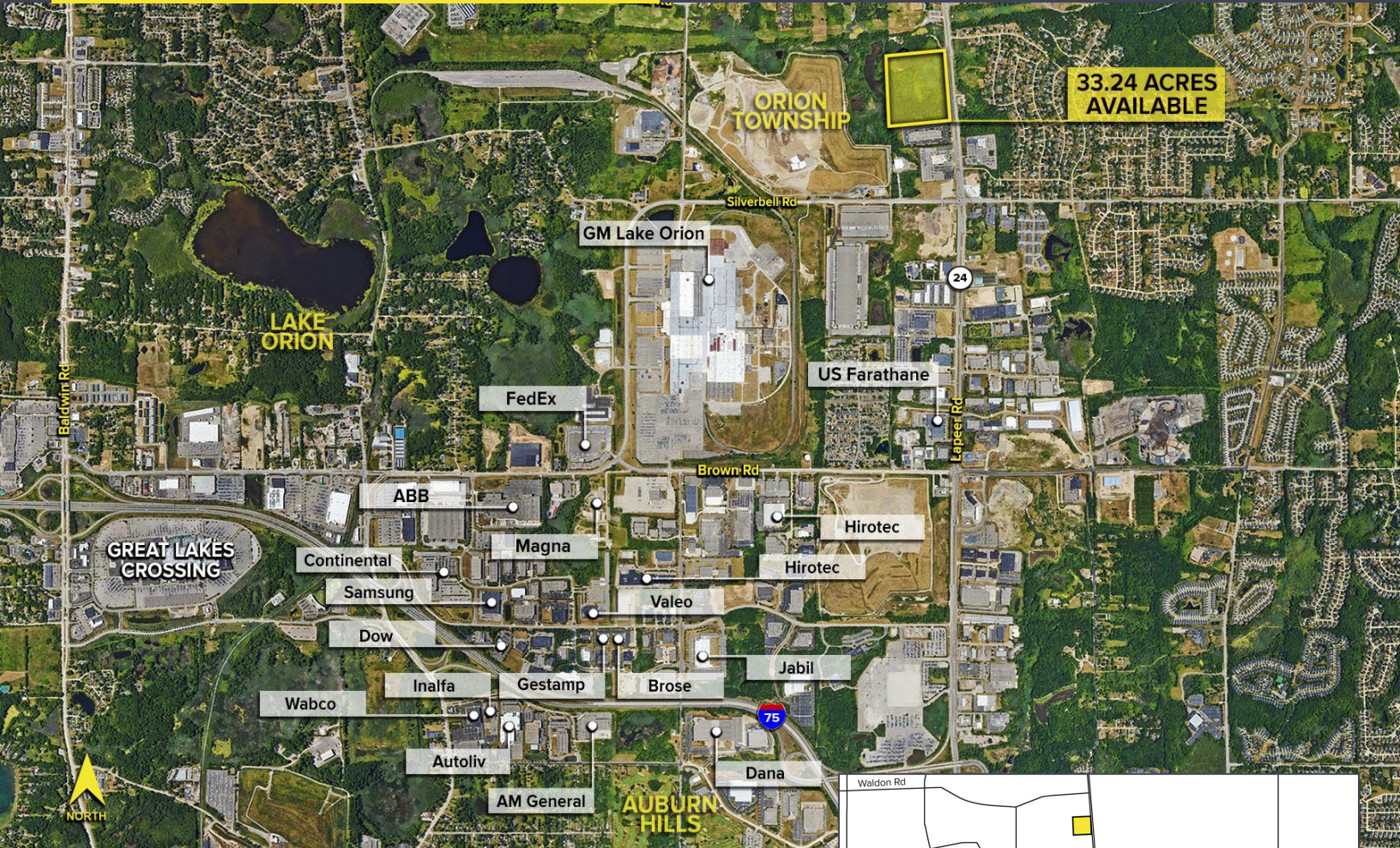


# LAPEER ROAD ORION TWP., MICHIGAN

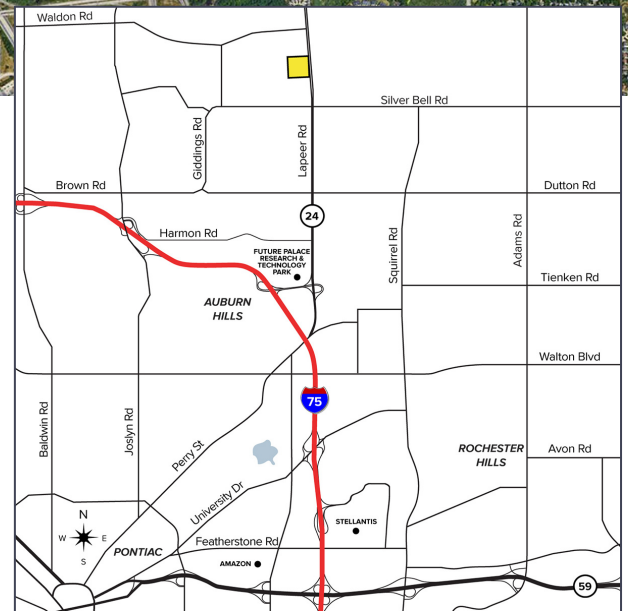
## VACANT LAND FOR SALE 2.00 - 33.24 Acres Available



**SIGNATURE  
ASSOCIATES**  
KNOW SIGNATURE | KNOW RESULTS



- 2.00 - 33.24 acres available
- Natural wetland setting allowing for 17 +/- usable acres
- Zoned OP-2 for: industrial, medical, retail, research & development, office, and senior housing
- Minutes to GM Orion, CTC and new Amazon Fulfillment Center in Pontiac
- Sale Price: \$2,300,000



For more information, please contact:

**KRIS PAWLOWSKI**  
(248) 359 3801  
kpawlowski@signatureassociates.com

**JOHN BOYD**  
(248) 948 0102  
jboyd@signatureassociates.com

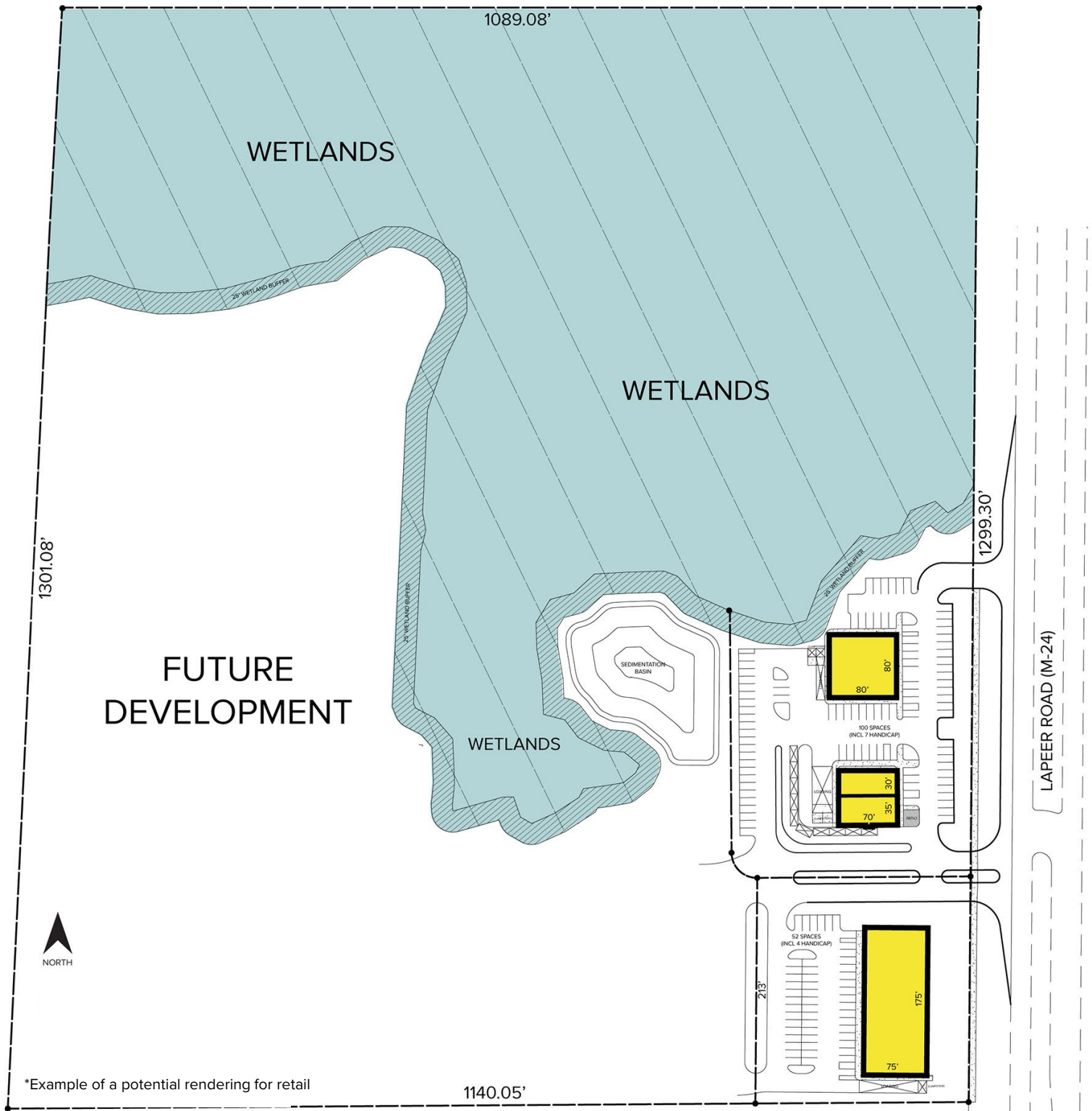
**SIGNATURE ASSOCIATES**  
One Towne Square, Suite 1200  
Southfield, MI 48076  
www.signatureassociates.com

# Lapeer Road – Orion Twp., Michigan

## Land For Sale

2.00 - 33.24  
Acres  
AVAILABLE

### Site Plan



For more information, please contact:

**KRIS PAWLOWSKI**  
(248) 359 3801  
kpawlowski@signatureassociates.com

**JOHN BOYD**  
(248) 948 0102  
jboyd@signatureassociates.com

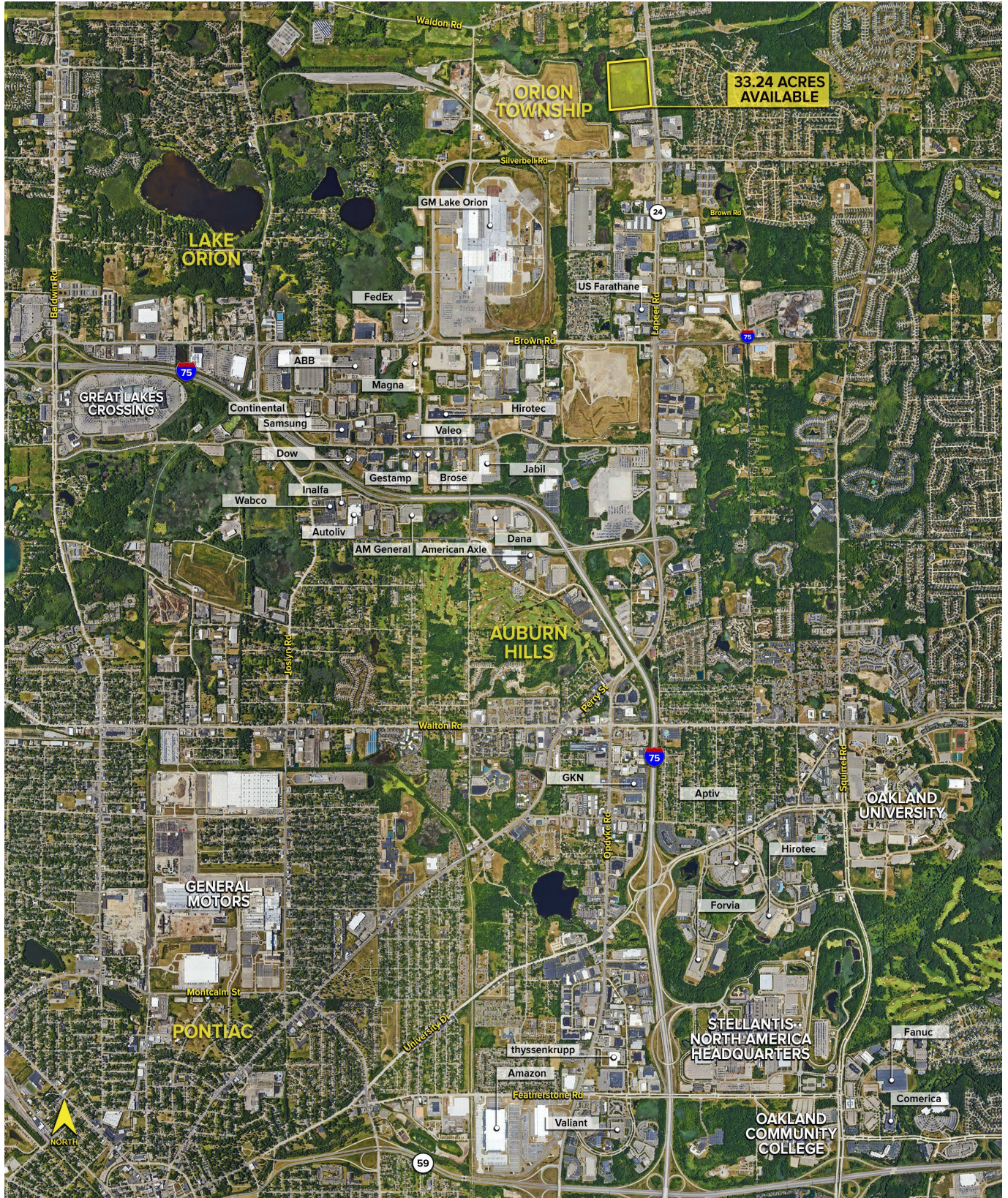
**SIGNATURE ASSOCIATES**  
One Towne Square, Suite 1200  
Southfield, MI 48076  
www.signatureassociates.com

# Lapeer Road – Orion Twp., Michigan

## Land For Sale

2.00 - 33.24  
Acres  
AVAILABLE

Aerial



For more information, please contact:

**KRIS PAWLOWSKI**  
(248) 359 3801  
kpawlowski@signatureassociates.com

**JOHN BOYD**  
(248) 948 0102  
jboyd@signatureassociates.com

**SIGNATURE ASSOCIATES**  
One Towne Square, Suite 1200  
Southfield, MI 48076  
www.signatureassociates.com

Information is subject to verification and no liability for errors or omissions is assumed. Price is subject to change and listing withdrawal.