

22,438^{SF} Office

For Lease

2221

Rosecrans Ave
El Segundo, CA

CBRE

Property Details



ADDRESS:

2221 Rosecrans Ave,
El Segundo, CA 90245



BUILDING LOCATION:

Suite 195 - Ground Floor



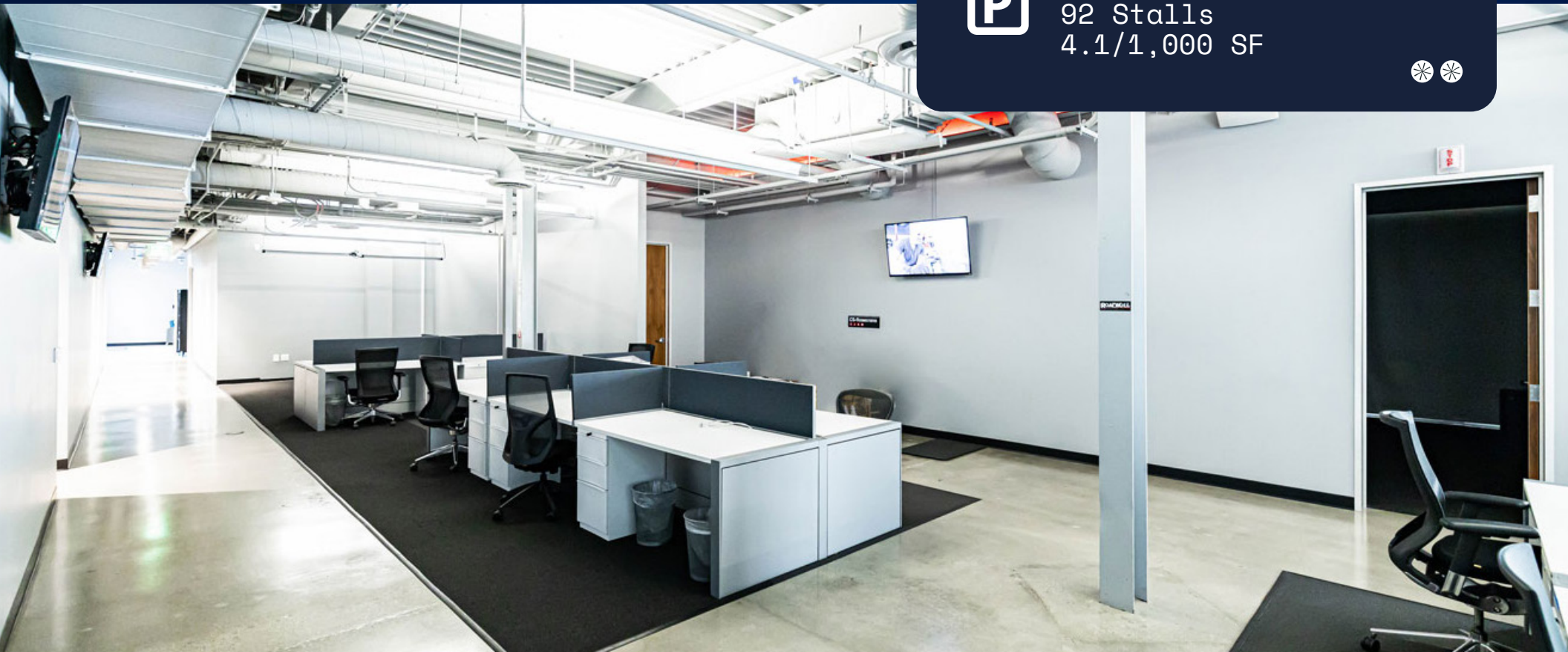
SQUARE FOOTAGE:

22,438 SF



PARKING:

92 Stalls
4.1/1,000 SF



Aerial Map

Conveniently located on the Rosecrans Corridor

2021

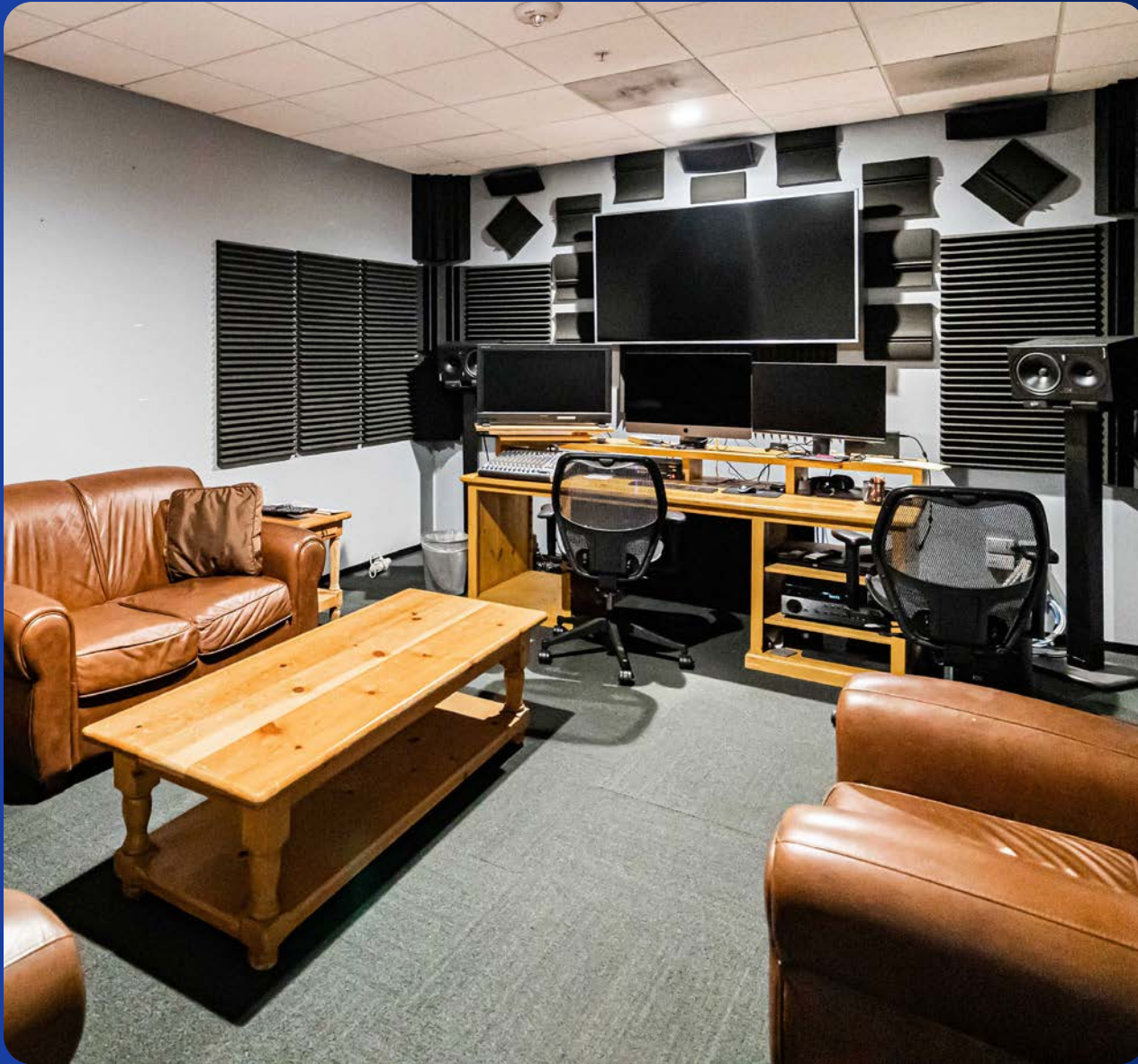
Rosecrans Avenue



Multi-functional studio suitable for creative and post-production agencies featuring:

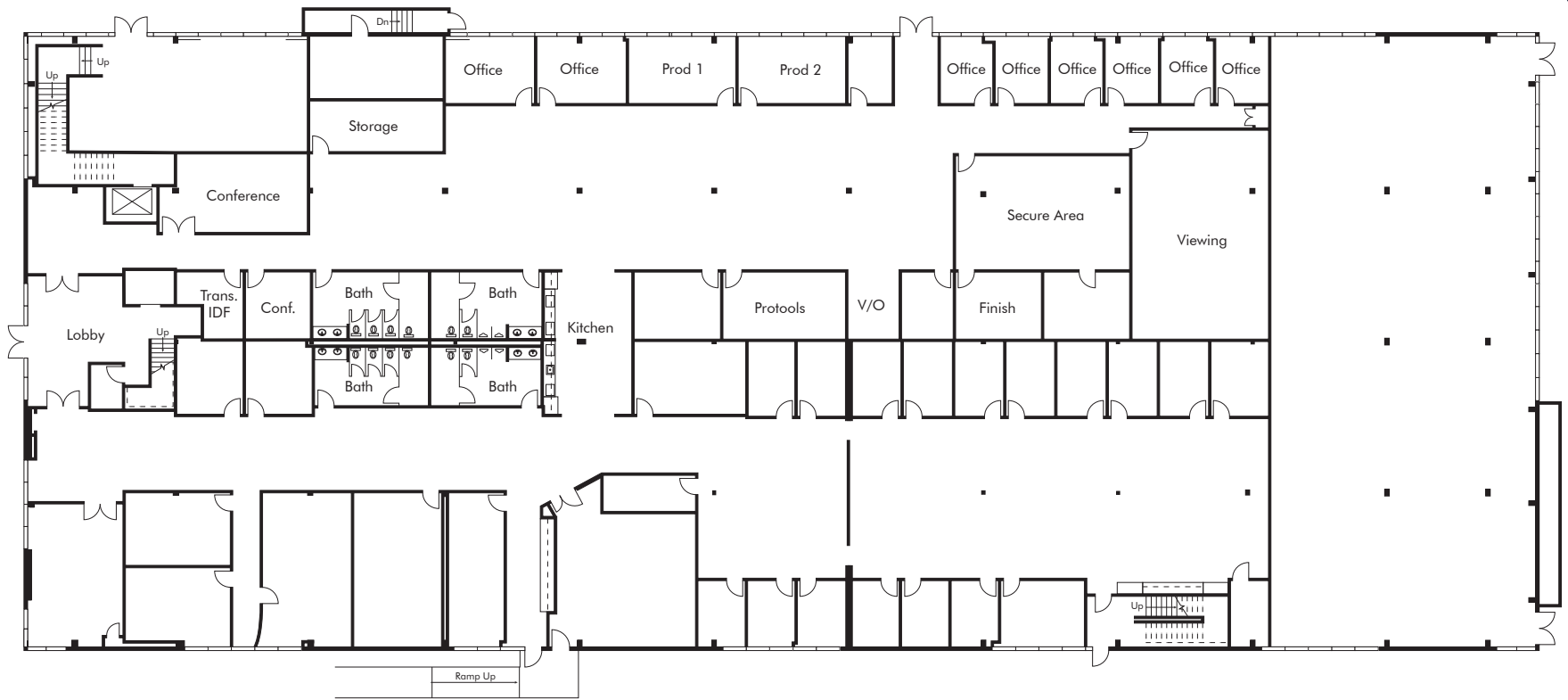
- » Multi-purpose editing, sound mixing and coloring/finishing suites
- » Open bullpen featuring several offices and conference rooms
- » Secure server rooms with dedicated HVAC systems
- » Equipped with blackout curtains
- » Suite adjacent to secure parking garage and outdoor patio





Built-out creative office space
suitable for post production services

Floor Plan



➤ 22,438 SF

Amenity Map



Contact:

Bob Healey

Lic. 01021735
+1 310 880 8171
bob.healey@cbre.com

John Lane

Lic. 01894667
+1 310 363 4947
john.lane@cbre.com

John Ayooob

Lic. 01406586
+1 310 363 4884
john.ayooob@cbre.com

Savannah Ajar

Lic. 02120427
+1 310 363 4883
savannah.ajar@cbre.com